



**NORTHERN**  
Oklahoma College  
TOKAWA | ENID | STILLWATER

# STUDY ABROAD IN

# Bali

## JUNE 18- 30, 2022

Depart U.S. by June 16 / Must arrive in Denpasar, Bali on June 18.  
Airfare is separate and must be arranged by student.

Exploring Bali's challenges through interactions with the island's social enterprises provides real-world context for issues discussed in the classroom and makes them come alive. Whether it's snorkeling over a coral restoration site, speaking with a member of the Balinese royal family, or visiting an organization that brings simple technologies to communities in need, our programs are designed to inspire students by creating teaching opportunities in non-traditional environments, or "living classrooms." Additional info: [www.noc.edu/global](http://www.noc.edu/global).

### Visit the historical Ulun Danu Beratan Temple



**FEE: \$2,950** (Airfare is separate and must be organized by the student.) program price includes: 7 credit hours, lodging, program activities, airport transfers, all breakfasts/lunches & 6 dinners, gratuities. A nonrefundable deposit of \$720 will be due upon enrollment (fall 2021 or spring 2022). A second payment of approximately \$1,029.50 will be charged on the Spring NOC account and payable on or before March 2022. A final tuition payment of approximately \$1,200.50 will be due in Summer 2022 [non-Oklahoma resident fee is additional]. Students will need money for passport, airfare, independent travel, shopping, snacks, meals away, etc. and approximately \$20 for guide/driver tips.

**DEADLINE:** The last day to enroll is May 5, 2022 or until sold out. If a student enrolls after December 10, 2021, both the deposit and second payment will be due on the Spring 2022 NOC account. Non-Oklahoma resident fee approximately \$1,579.

### HOUSING, MEALS, TRANSPORTATION:

Students will stay 12 nights in guest house accommodations or hotels in double or triple rooms. All locations will be staffed 24/7 by representatives from our local host, the Bali Institute. All breakfasts and lunches are included; six dinners included. Airport transfers on arrival and departure day are included as are all required program transfers. Students are not allowed to rent or operate mopeds or motorcycles or other motorized vehicles. Basic comprehensive travel and medical insurance will be provided.

**COURSES:** Each student is required to take the following two classes during the program for a total of seven credit hours.

#### BIOL 1214: Introduction to Environmental Science (N, L)

**Mary Gard, Instructor**

An introduction to the basic principles and concepts of ecology. Special emphasis on current environmental problems and control measures. Appropriate laboratory work and demonstrations to implement the fundamental principles and concepts learned in theory. This course will transfer to OSU as a natural and lab science (N, L).

NOTE: There will be pre- and post-program assignments required.

#### GLBL 2123: Global Culture and Society (H, I)

**Dean Wade Watkins, Instructor**

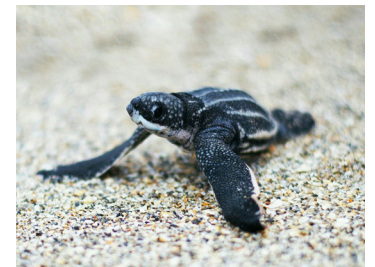
This course will explore a specific country or region's cultural fields. Students may examine cultural fields such as: literature, music, visual and performing arts, sports, anthropology, religion, language, history, politics and philosophy. Meets requirements for humanities credit and International Dimension.



Enjoy a royal palace tour  
and dinner at the  
Peliatan Palace.



Sites Include: the holy spirit temple Tira Empul, Mt. Batur volcano, Banjar village, the Mai Organic Farm, visit to a small fishing village of Pemuteran, turtle hatchery and snorkeling over the coral restoration project.



Follow Us  
on Instagram!  
@NOCglobal

Contact: Dean Wade Watkins 580.628.6957 | [wade.watkins@noc.edu](mailto:wade.watkins@noc.edu)  
or Mary Gard 580.628.6983 | [mary.gard@noc.edu](mailto:mary.gard@noc.edu)  
**NOC GLOBAL EDUCATION** [www.noc.edu/global](http://www.noc.edu/global)

In case of program cancellation, contact Wade Watkins for conditions of refund.

Like us  
on Facebook  
Northern Oklahoma  
College - Global  
Education