



SAFETY MATTERS

Annual Security and Fire Safety Report

safety.okstate.edu

TABLE OF CONTENTS

MESSAGE FROM THE PRESIDENT 2

REPORTING

Police Services	4
Crime Reporting	4
Crime Disclosure	5
Campus Security Authorities	7
Timely Warnings	7
Emergency Notifications	8
Missing Student Notification	8

SAFETY

Harassing Phone Calls	11
Medical Emergencies	11
Natural Disasters	11
Facilities Access	12
Lost and Found	12
Transportation	13
Homeland Security	13

PREVENTION

Alcohol and Drug Awareness	16
Crime Prevention	16
Safety Tips	17
Suicide Prevention	18
Supporting Students in Distress	19

SEXUAL VIOLENCE INFORMATION

Jeanne Clery Disclosure Act	21
Definitions	21
Procedures Victims Should Follow	23
Support Services	25
Adjudication of Violations	27
Student Conduct Process	28
Employee Process	29
On- and Off-Campus Resources	30
Victim Bill of Rights	31
Definitions under Oklahoma Law	31
Preventative Measures	34
Risk Reduction	37
Sex Offender Registration	38

STATISTICS

Report of Statistics	40
Definitions of Criminal Offenses	40
Definition of Terms for Statistical Charts	42
Crime Statistics Charts	43

FIRE

Annual Fire Safety Report	48
Housing and Residential Life	
Fire Safety Policies	50
Fire Safety	51
Fire Statistics Charts	54
Fire Safety Systems Charts	
(Student Housing and Fire Safety Systems and Fire Drills)	67

OTHER RESOURCES 80

MESSAGE FROM THE PRESIDENT

OSU PRESIDENT DR. KAYSE SHRUM



Safety is a priority at Oklahoma State University, and I'm proud to say we enjoy a well-deserved reputation as one of the safest schools in the Big 12.

OSU has a long history of law enforcement excellence. We have the first police department in Oklahoma accredited by the Oklahoma Law Enforcement Accreditation Program. The department serves the campus community, Lake Carl Blackwell and other OSU property such as agricultural research areas.

And while we enjoy the security our campus police provide, I ask that all of our students and employees educate themselves about personal safety and the safety of those around them. The university offers training through the OSU Police Department, the Department of Environmental Health and Safety, Division of Student Affairs, Human Resources and more.

OSU also provides the Rave Guardian app, a personal safety resource. We encourage all members of the campus community to download and utilize the app, which provides helpful links, frequently used numbers and a way to chat with the OSU police dispatchers, send tips, request help and send photos.

Communications are another vital part of our safety protocols. One of the most important is our Cowboy Alert system, which allows us to send a text message, voice message or email to every member of the campus community in the event of an emergency.

The university works hard to provide a high level of safety, but the best defense is a good offense: Take responsibility for your own safety, remain aware and if you see something, say something.

Have a great year, Cowboys!

Kayse Shrum, DO
President Kayse Shrum



REPORTING

safety.okstate.edu

POLICE SERVICES

The OSU Police Department is an accredited policing agency, initially accredited by the Oklahoma Association of Chiefs of Police (OACP) in 1998. The first agency in the state of Oklahoma to become accredited, the OSU Police Department continues to be a leading professional organization by adhering to the best policing practices as prescribed in the accreditation standards.

The OSU Police Department serves a community of approximately 30,000 faculty, staff and students. OSU is located in the city of Stillwater and covers approximately 840 square acres on the main campus, including over 180 buildings plus outlying agricultural and recreational areas. The department's overall strength (authorized positions) is 33 sworn officers who have full enforcement and arrest authority on the OSU campus. As established in 74 O.S. § 360.17, Council on Law Enforcement Education and Training (CLEET) certified campus police officers have the authority to enforce state criminal statutes, municipal ordinances and the rules and regulations of the institution of higher education. Commissioned campus police officers have the same powers, liabilities and immunities as sheriffs and police officers within their jurisdiction. The men and women of the OSU Police Department attend the same state police basic academy as most other law enforcement agencies in Oklahoma. To provide the best services possible to the OSU community, OSU Police have mutual aid agreements with both the Stillwater Police Department and the Payne County Sheriff's Office, allowing for cooperation in enforcement activities. However, the OSU Police Department retains primary jurisdiction for the investigation and handling of criminal incidents within its jurisdiction. Some low-threat duties, such as entrance assists, the SafeWalk escort program, and selected security assignments, are accomplished with student public service officers. The student public service officers have no enforcement powers and may only operate on OSU owned or controlled properties, but they can quickly call upon the assistance of a campus police officer in the event an enforcement action is necessary.

OSU police officers provide a positive image to visitors and members of the campus community, whether it is providing directions, parking information or just a friendly welcome.

Our officers represent this university as a group of caring and professional people, intent upon enhancing a friendly community atmosphere. Necessary enforcement includes using alternatives to arrest when reasonable. Our participation in athletic and special events ensures that all aspects of planning consider the safety and security of all participants. OSU police officers provide professional crowd control and traffic regulation before, during and after such events.

Students and staff find our office willing to share statistics, insights and experiences as a basis for class reports or vocational interests. OSU police managers seek proactive means to avoid problems and situations, whether it is suggesting additional security measures, providing insight on planned activities or using investigative analysis to determine a deterrent force.

For the OSU Police Department, service is a way of life. Services such as motorist assists, money transports and emergency message notifications are handled routinely.

OSU police provide programs aimed at promoting seatbelt use, prevention of texting while driving and educating our residents, primarily the students, about the effects and penalties of alcohol use and abuse. A positive effect of the effort has been the strict enforcement of alcohol-related laws, which has been dramatic in getting drunk drivers off campus streets and ultimately preventing accidents. This effort continues, in part, with an emphasis on preventing underage drinking.

The OSU Police Department has primary jurisdiction on OSU owned and controlled properties throughout Oklahoma, with the exception of Greek Life houses which fall within the primary jurisdiction of the Stillwater Police Department. Through mutual aid requests, incidents occurring on OSU owned and controlled properties outside of Payne County, Oklahoma, may be referred to the local sheriff's office or municipal police department. The OSU Police Department

maintains memorandums of understanding with both the Stillwater Police Department and the Payne County Sheriff's Office, allowing for enforcement of statutes and ordinances "off campus" in coordination with each respective agency.

Thousands of visitors, campers, fishermen and sightseers visit Lake Carl Blackwell and its surrounding recreational areas. OSU police officers provide them with friendly and proficient police protection, including lake-patrol and rescue operations on the water. While the OSU Police Department will respond to calls for service at Lake Carl Blackwell year-round, two officers are typically dedicated to lake patrol duty from Memorial Day weekend through Labor Day weekend.

Overall, the OSU Police Department believes in providing proactive law enforcement and service to the university community.

CRIME REPORTING

Crime victims and witnesses to a crime are encouraged to accurately and promptly report incidents to the OSU Police Department or other appropriate police agency.

To report a crime or other emergency, the victim or witness can call the police phone number (405) 744-6523, (405) 744-6524, 311 (from a campus landline phone), or 911 (for emergencies) and a police officer will meet them to gather information. Or, they can contact the police through the OSU safety app.

RESPONSE TO REPORTS

Dispatchers are available 24 hours a day at all the above listed numbers, except 988 which is answered 24 hours a day by Solari Crisis and Human Services call takers. In response to a call, dispatchers or call takers will take the required action, either dispatching the appropriate assistance to your location, or requesting that you report to a location to file a report or receive services. An official report is then made, with copies available to the victim after a completed investigation. Each business day, the incidents from the previous day — excluding names — are summarized and made available to the public, key

OSU staff, other law enforcement agencies and the media. The public can access the daily activity summary via the internet by visiting the OSU Police Department website (safety.okstate.edu/police) and clicking on the Activity Summaries tab in the Clery Act section.

OSU PD maintains a Clery Crime Log / Activity Summary, which is available to the public for review, at the OSU PD lobby, from 8 a.m.– 5 p.m. Monday through Friday, excluding holidays and days the university is closed. A version of the Daily Crime Log is also available online at safety.okstate.edu/police/clery-act/activity-summaries.html.

Each month, the number of incidents in each category of crime are counted and reported to the Oklahoma State Bureau of Investigation, which in turn provides the information to the Federal Bureau of Investigation. These statistics are published and available to the public at osbi.ok.gov/statistical-analysis-center/data-and-statistics.

Each year, the FBI publishes a book of crime statistics called Crime in the United States, which includes accurate accounting of the criminal incidents that occurred on the OSU campus. OSU has reported crime statistics in this manner since the FBI began publishing campus crime statistics in 1971.

CRIMES IN PROGRESS

To report a crime in progress, a victim or witness can dial 911, use one of the blue emergency telephones, use the Rave Guardian safety app, or call one of the listed police phone numbers. Any reporting method will initiate the response of police, fire, ambulance or other first responders. In addition, the victim of a serious crime can request support personnel, such as ministers, victim advocates or counselors, during or after reporting the incident.

Additionally, crime victims may be eligible for funds through victims' compensation laws administered by the local district attorney. See ok.gov/dac/Victims/Victims_Compensation_Program/ for more information.

Prompt reporting of criminal activity to the police enables a quick response, a timely warning if warranted, and makes the campus safer for everyone. So, if you see something, say something!

IF YOU ARE THE VICTIM OF A CRIME OR WITNESS TO ONE, YOU SHOULD DO THE FOLLOWING:

1. Call the police immediately:

405-744-6523 or 311 (from campus phones)

911 (for emergencies)

405-744-TIPS (8477)

2. Obtain a description:

Attempt to obtain a description of the offender, including gender, age, race, hair, clothing and distinguishable features. It is common for many people to have a cellphone with a camera, and a photo of a suspect can be an invaluable aid to the investigation. Also attempt to obtain a description and license number of any vehicle involved. Again, a photograph can be a tremendous aid in locating and apprehending a suspect. Note the direction of travel of any offender or vehicle, and report these to the police. If using the safety app, pictures or video can be transmitted directly to the OSU Police Department and the caller/user can remain anonymous if desired.

3. Preserve the crime scene:

Do not touch any items involved in the incident. Close off the area and do not allow anyone in the crime area until police arrive.

TYPES OF CRIMES REPORTED TO POLICE:

SEXUAL ASSAULT: If you have been sexually assaulted, you should seek medical treatment immediately, regardless of whether you report the matter to the police. In order to preserve the physical evidence, do not bathe, douche, use the toilet or change clothing. If you are a sexual assault victim, it is best to report it to the police as soon as you are able.

TELEPHONE HARASSMENT: Obscene or threatening telephone calls should be reported to the police immediately. Other harassing phone calls should be reported if they persist. If you receive such a call, remain calm and hang up. Always record the exact time and date you received the call. This information will assist police investigators.

BOMB THREATS: If you know of a bomb threat, contact the OSU Police Department at 911. Notify your supervisor, department head or community mentor and wait for further instructions. Record as much information about the call as you can remember.

BURGLARY AND LARCENY: Property crimes are the highest reported crimes on the OSU campus. To aid police in locating property, we recommend you always record the serial numbers of any items of value (such as computers, cellphones, televisions, etc.). In cooperation with the OSU Information Technology department, you now have an online Personal Asset Inventory available to you when you log into my.okstate.edu. If you feel you have been a victim of a property crime, report the incident immediately to the OSU Police Department at 405-744-6523 or use the safety app. If you believe there is a burglary or larceny in progress, call 911.

ASSAULT AND BATTERY: The best thing to do when confronted in an assault and battery situation is to try to escape and immediately notify the police by dialing 911 or activating a blue phone.

OTHER CRIMES: There are many other crimes that occur on campus. Generally, you should protect yourself and others and report information to police as soon as practical.

CRIME DISCLOSURE

Oklahoma State University policies and procedures require the publication of annual crime statistics. Included in this report are crimes reported to the campus police and other campus officials including, but not limited to, Athletics, University Health Services, Housing and Residential Life, and

Student Conduct. Community members may report crimes anonymously through Crime Stoppers. The Rave Guardian safety app also provides a mechanism to report crimes anonymously by using features within the app.

CONFIDENTIAL REPORTING OF CRIME

Confidential reporting is allowed at Oklahoma State University. If a person does not wish to report an on-campus crime or suspected crime to the police, that person may anonymously report it to the Crime Stoppers Program, speak to an OSU victim advocate or utilize the Rave Guardian safety app to make an anonymous report. OSU PD does not have a voluntary confidential reporting process because police reports are public records under state law. Thus, OSU PD cannot hold reports of crime in confidence. Confidential reports for purposes of inclusion in the annual disclosure of crime statistics can be made to any campus security authorities. However, some of the CSAs are also Responsible Employees under Title IX, and they are obligated to share reported information involving sexual misconduct, domestic/ dating violence and stalking, including information about the identity of the victim and accused, with the Title IX Coordinator. Reports to professional and pastoral counselors can be kept confidential.

REPORTING SUSPICIOUS ACTIVITY

- If you see any suspicious activity or persons on or near the campus, it is your responsibility to call the OSU Police at 405-744-6523, 311, or 911 for emergencies, or use the Rave Guardian safety app.
- Do not assume what you see is an innocent activity or that another individual has already called the police. Do not worry about being embarrassed; rather, think about what could happen if you do not act. Wouldn't you want someone else to call if you needed help?

SUSPICIOUS PERSONS MAY INCLUDE:

- Someone loitering about at unusual hours and locations.

- Someone running, especially if they are carrying something of value.
- Someone exhibiting unusual mental or physical symptoms. They could be under the influence of drugs or needing medical or psychiatric assistance.
- Someone carrying property that might be suspicious, depending on the circumstances.
- Someone going from room to room, or car to car, trying door handles.
- Someone going from door to door trying to gain access into a building.

OTHER UNUSUAL SITUATIONS:

- Threatening statements, disturbing images or video posted on digital platforms that may appear to be a threat to the safety of an individual, group or the campus community.
- Open or broken doors or windows.
- Unusual noises — anything suggestive of foul play, danger or illegal activity.
- Someone sitting in a parked vehicle for an extended period of time.
- Vehicles driving slowly in a parking lot or parking garage at night.
- Any person not affiliated with the university community in an area not typically associated with visitors or the public.
- Do not assume the person may be a visitor or university staff that you have not seen before. Call the OSU Police Department immediately.

STEPS TO FOLLOW TO ENSURE THE SAFETY OF YOUR BICYCLE:

1. Register your bicycle with Parking and Transit Services.
2. Engrave your student identification number on your bicycle, and keep a record of the bicycle serial number.

3. Upload a photo of your bicycle and record the serial number in the university's Personal Asset Inventory system.
4. Lock your bicycle at a bike rack.
5. Use a high quality "U" bolt lock and/or a quality chain or cable and lock. Place the chain, cable or lock through both wheels, the frame and around the bicycle rack. Take the front wheel and/or seat with you, if removable.
6. Always lock your bicycle when not in your physical control.
7. If your bicycle is stolen, contact OSU Police or local municipal police immediately.

JUVENILE CURFEW

In order to better provide for public safety on the OSU campus, a juvenile curfew is in place. Generally, persons under 18 years of age are not allowed to roam, loiter, bicycle, skateboard, rollerblade or otherwise linger on campus between 11 p.m. and 6 a.m. Sunday through Thursday, and 12 midnight to 6 a.m. Friday and Saturday.

Exceptions:

- OSU students or staff.
- Juveniles escorted by parents or adult guardian.
- Juveniles escorted by students, faculty or staff.
- Juvenile residents of university apartments en route between apartments, automobiles to apartments, or while performing a task directed by a parent or guardian.

Sanctions:

FIRST OFFENSE — Apprehension, informed of the curfew and warned.

SECOND OFFENSE — Apprehension, call parents, release to parents and issue "notice to vacate campus."

THIRD OFFENSE — Apprehension, arrest for violation of trespassing as defined in Oklahoma Statutes Title 21, Section 1376. This applies to non-university apartment residents.

BLUE PHONES

Oklahoma State University has blue emergency telephone stations throughout campus. From these phones you can contact OSUPD and an officer will respond. The network has been operating for over 25 years. However, as technology needs have changed, and the vast majority of students have a phone with them at all times, the system is being phased out and units removed as they need repair or replacement.

REPORTING BEHAVIOR OFF CAMPUS

Student Affairs maintains contact with recognized fraternity and sorority organizations through the efforts of the assistant director of Fraternity and Sorority Affairs. Non campus residences of recognized fraternity and sorority organizations fall under the jurisdiction of the Stillwater Police Department. Therefore, criminal activity at those recognized houses is monitored and recorded but the Stillwater Police Department. Student Affairs and OSU Police enjoy a close working relationship with the Stillwater Police when violations of federal, state or local laws surface.

CAMPUS SECURITY AUTHORITIES

CAMPUS SECURITY AUTHORITIES INCLUDE:

1. Any employee of the campus police department or campus security department of Oklahoma State University.
2. Any individual who has responsibility for campus security but who is not a member of the campus police department or the campus security department (e.g. parking enforcement staff, campus safety escort staff and special event venue security).
3. Any individual specified in the university's statement of campus crime security policy as an individual to which students and employees should report criminal offenses.

4. Any individual of the university who has significant responsibility for student and campus activities (e.g. student housing, student discipline, athletic directors/coaches and campus student judicial officials).

THE FOLLOWING INDIVIDUALS ARE DESIGNATED AS CAMPUS SECURITY AUTHORITIES:

Department of Public Safety

Chief Public Safety Officer
All sworn police officers
All communication officers
Public service officers

Department of Parking and Transportation Services

Parking professional staff
Bus drivers
Student parking regulation enforcers

Athletic Department

Director of Athletic Programs Assistant/associate athletic directors
Head coaches for athletic teams
Assistant/associate coaches for athletic teams
Graduate assistants for athletic teams
Athletic academic support professional staff
Athletic trainers

Colleges

Deans
Academic advisers
Commissioned officers and faculty of military science

Division of Student Affairs

Vice President for Student Affairs
Director of the Student Union
Meeting and conference services professional staff and building managers

Campus Life professional and graduate staff
Advisers for student organizations (affiliated with the university)
Student Union parking staff
Career Services professional and graduate staff
Director of University Counseling Services
Student Accessibility Services professional and graduate staff
Victim advocates
Department of Wellness professional and graduate staff
Director of University Health Services
Housing and Residential Life professional and graduate staff
Residence Hall mentor staff and desk clerks

Music Department

Director of Bands
Associate/assistant directors of bands
Graduate assistants for bands

Institutional Diversity

Diversity Academic Support/TRiO professional staff
Multicultural Affairs professional staff

Other

Director, Equal Opportunity and Title IX Coordinator
Equal Opportunity Coordinators
Human Resources consultants
Ombudsperson

TIMELY WARNINGS

The OSU Police Department carefully reviews all reports of criminal activity and, when appropriate, warns the OSU community of serious crimes or threats occurring on or near campus.

Upon completion of reviewing all information, OSU may provide warnings to the OSU community. These warnings are typically sent through the Cowboy Alert system (text, voice, email and social media), and may be posted on the Campus Safety website

located at safety.okstate.edu. Depending on the nature and level of the threat, other forms of media may be also used to disseminate timely warnings. These may be sent via voicemail or to campus email accounts. Timely warnings will be made as soon as is safely practical.

The OSU Police Department, the vice president for administration and finance or designee, and the public information officer are typically the ones who deliver information to university administration. Upon receiving information, administration will, without delay and taking into account the safety of the community, determine the content of any timely warning and initiate a notification, unless issuing a notification will, in the professional judgement of the responsible authorities, compromise efforts to assist a victim or to contain, respond to or otherwise mitigate the threat.

EMERGENCY NOTIFICATIONS

In the event of a campus emergency, Oklahoma State University may use a variety of tools to communicate to the campus and the public. Depending on the nature of the emergency, OSU may use all or some of the following:

- **TEXT AND VOICE ALERTS** — The “Cowboy Alert” system is available to all campus faculty, staff and students. You may register your cell phone to receive a text message and/or voicemail through your O-key account at okekey.okstate.edu.
- **SIREN SYSTEM** — Sirens are tested around 11:30 a.m. on the first Tuesday of every month. They can deliver a siren warning and/or public address announcement in the event of certain emergencies.
- **PA SYSTEM** — Various campus buildings have PA systems that can alert those in the building of an emergency situation and provide response details.
- **UNIVERSITY GROUP EMAIL** — The university may send “urgent” e-mails to the entire campus providing notification and directions during an emergency.

- **SOCIAL MEDIA** — OSU may use Facebook, Twitter and/or other social media tools to provide updates on campus closures or emergency situations.
- **CABLE TV/CAMPUS MONITORS** — OSU has the ability to override the campus cable system, providing emergency notification via the campus TV system in many university buildings and residential housing.
- **LOCAL MEDIA** — The Office of Brand Management office works with local media — radio, television and newspapers — to help announce and update campus closures or emergency situations.
- **WEATHER RADIOS** — Various offices across campus have weather radios that provide the latest in severe weather information.
- **PATROL CAR ANNOUNCEMENTS** — Campus police vehicles are equipped with PA systems that allow officers to communicate during emergencies.
- **CALLING TREES** — Many university departments and organizations have calling trees in place to notify their employees and students of an emergency situation.
- **CAMPUS SAFETY WEBSITE** — You may want to bookmark safety.okstate.edu, which provides links to a variety of safety information and will be updated with details during actual emergencies or campus closures.

In emergency situations where immediate action is required, OSU Police may activate sirens and employ other resources.

The Oklahoma State University campus could be subjected to a situation requiring evacuation at any time. Because of this, the OSU Department of Public Safety has developed an evacuation plan in collaboration with a number of university and community partners. The plan was developed to outline an evacuation procedure that protects the health, safety and welfare of all students, faculty, staff and visitors. The authority to issue a campus evacuation order rests with the president of the university or designee and is based on the situational observations by the OSU Department of Public Safety. In conjunction with an evacuation order, the

University Emergency Operations Center will be activated and will lead and manage the process. In addition to notifying the campus community, the university will also inform the local community as soon as reasonably practical. OSU Brand Management will coordinate all messaging to both on- and off-campus communities as well as media outlets. OSU’s manager of emergency operations works with the university’s Information Technology Department, the City of Stillwater and Payne County to maintain our emergency communication system(s) and schedules routine tests on at least an annual basis of each method available to the campus.

MISSING STUDENT NOTIFICATION

In accordance with Section 485 of the Higher Education Act, 20 U.S.C. § 1092(j), Oklahoma State University has developed this investigation and notification policy regarding students who reside in on-campus housing and have been reported as missing.

Any report to a university official or campus security authority indicating that a student who resides in on-campus housing is missing shall be referred immediately to the Oklahoma State University Police Department, and an investigation shall be conducted. If members of the OSU community believe that a student has been missing for 24 hours, it is critical that they report that information to OSU PD by calling 405-744-6523.

Students are advised that in the event a student is under 18 years of age and not emancipated, OSU must notify a custodial parent or guardian within 24 hours of the determination that the student is missing, in addition to notifying any additional contact person designated by the student. Students are advised that for all missing students, OSU will notify the local law enforcement agency within 24 hours of the determination that the student is missing, unless the local law enforcement agency was the entity that made the determination that the student is missing.

If the initial investigation determines that the student is missing, the following persons shall be notified:

1. *A confidential contact person designated by the student* within twenty-four (24) hours of the determination that the student is missing. Students have the option of identifying a person of their choice to be contacted in the specific case they are determined missing. Students can choose to identify the same person as their general emergency contact or identify a different person who is more likely to know their whereabouts if determined missing (for example, a roommate, close friend or in-town relative might be more familiar with an individual's daily movements than out-of-town family or friends). Their choice can be entered as a Confidential Contact and kept updated on their O-Key account services page at okey.okstate.edu. When students are informed of their option to provide a confidential contact, they are advised that their contact information shall be considered confidential and is only to be accessed by authorized university officials and to law enforcement and that it may not be disclosed outside of a missing person investigation. This confidential contact person database can be used by any OSU student, whether they live on-campus or not.
2. *The student's custodial parent(s) or legal guardian(s), if the student is under 18 and not an emancipated minor and any other designated contact person within 24 hours.*
3. *Local law enforcement authorities.*
The Oklahoma State University Police Department will work with other law enforcement agencies, if necessary, once a student is determined to be missing. Regardless of whether the student has a contact person, is over the age of 18, or is an emancipated minor, OSU will inform the local law enforcement that the student is missing within 24 hours.

4. *Others*

University officials may elect to notify additional persons determined to be appropriate and consistent with the Family Educational Rights and Privacy Act, 20 § 1232(g).

IMPORTANT: Students are encouraged to share pertinent information with family and friends when leaving campus or taking trips. Sharing this information will enable university staff, as well as family and friends, to contact them if the need arises. In addition, students are encouraged to periodically update their emergency contact information in O-Key.



SAFETY

safety.okstate.edu

HARASSING PHONE CALLS, TEXTS AND EMAILS

Harassment by telephone, text message, email or other means is both a nuisance and a crime. It will not be tolerated on the Oklahoma State University campus.

IF YOU ARE A VICTIM OF TELEPHONE HARASSMENT, PLEASE FOLLOW THESE STEPS:

1. As soon as you realize the nature of the call, **HANG UP**. Remain calm.
2. Do not talk or try to discover the caller's identity.
3. If calling persists, or if any call is obscene or threatening, call OSU Police at 405-744-6523, or use the Rave Guardian safety app. If off-campus, call the law enforcement agency within the jurisdiction you are located and report the activity.
4. If calling persists, keep a time log of calls received, what was said by all parties and a description of the voice.

IF YOU ARE A VICTIM OF HARASSMENT VIA TEXT MESSAGING OR EMAIL, FOLLOW THESE STEPS:

1. Do not attempt to respond or otherwise interact with the suspect once an initial notification to cease messaging has been made.
2. Do not delete the messages; they will be important as evidence during an investigation.
3. Contact the OSU Police to file a report, or contact your local law enforcement agency if you are off-campus.
4. Keep a log of the message dates and times to aid in retrieving messages as evidence when filing a report.

MEDICAL EMERGENCIES

STEPS TO TAKE IN MEDICAL EMERGENCIES:

1. Do not move the patient unless his or her life is in danger.
2. Have someone stay with the patient until help arrives.
3. Call 911. Tell them your name, your exact location, and a brief description of the problem. Do not hang up until told to do so.
4. Meet emergency personnel to guide them to the patient.

MEDICAL ILLNESS AND MINOR INJURIES

The OSU University Health Services is a primary outpatient health care facility designed to provide cost-effective health care and health information to students at Oklahoma State University.

ELIGIBILITY

Students who are currently enrolled at Oklahoma State University and who have paid the required Student Health Fee are eligible. Non-enrolled spouses of students can also use all services offered at the clinic by paying the health fee. Students who have questions concerning eligibility can contact the University Health Services business office at 405-744-7665.

HOURS ACCESSIBLE:

Monday through Friday 8 a.m.-5 p.m. throughout the year (except during university closures such as holidays and weather closures).

UNIVERSITY HEALTH SERVICES PROVIDES:

1. Outpatient services for students, including all state required immunizations.
2. Pharmacy, x-ray and laboratory services.
3. Women's Clinic by appointment.

4. Allergy injections by appointment.

5. Consultations and referrals to other medical specialties.

For appointments call 405-744-7665.

For all other medical services or major medical emergencies, go to the Stillwater Medical Center Emergency Room, located at 1323 W. 6th St. in Stillwater or call 405-372-1480 for further information.

NATURAL DISASTERS

The following information is offered as a guideline to aid you in determining what action you should take in the event of severe weather.

Tornado WATCH: Conditions are such that storms capable of producing a tornado may develop.

Tornado WARNING: Either a tornado has been sighted or, in cases of limited visibility it is highly probable that one has developed or is imminent. A warning will be signaled by the storm warning sirens.

The **TORNADO TAKE COVER SIGNAL** is a 3- to 5-minute STEADY sound on the storm sirens. This signal will sound on the large sirens located in the 1511 W. McElroy area (University Apartments), Seretean Center, Life Sciences North, 618 N. Monroe, 224 N. Orchard St., Lake Carl Blackwell (Hunts Meadow area), Camp Redlands and those installed throughout the City of Stillwater. If the sirens sound again, it is further warning — **NOT** an all-clear signal.

NOTE: The storm sirens are tested the first Tuesday of each month, weather permitting, at 11:30 a.m.

When the National Weather Service issues a "**TORNADO WARNING**" for a possible tornado within a 10-mile radius of the campus, an automatic "**COWBOY ALERT**" text message is sent.

Persons should seek **IMMEDIATE** refuge in a basement or lower floor, interior corridors or interior rooms. If you are in an open-span area such as a gymnasium, auditorium or warehouse, go to the wall farthest from windows or glass, crouch down against

the wall and protect your head with your arms. **STAY AWAY** from windows and exterior doors. If caught outside a building, lie flat on the ground, face down, preferably in a ditch or depression, but be alert for flash floods.

OSU Police will open designated **“SEVERE WEATHER REFUGE”** areas in case of storm activity after regular hours. Use caution when traveling to these buildings. A list of designated **“SEVERE WEATHER REFUGE LOCATIONS”** areas can be found at safety.okstate.edu, under the *Weather Safety* tab.

Persons with disabilities and who are mobility impaired must also make plans. If a power outage occurs during severe weather, elevators may not work. Always go to an interior room or closet.

If local radio is available, keep tuned to KSPI-FM (93.7 MHz) or KOSU-FM (91.7 MHz) for storm details. The **“ALL CLEAR”** signal is given over FM radio and **NOT** the storm sirens. Stillwater Emergency Operations Center also broadcasts storm warnings over local cable television.

In case of **LIGHTNING**, OSU has installed and utilizes its own lightning detection and notification system to determine the proximity of lightning to OSU. When lightning is detected within 8 miles of the OSU campus (indicated by an audible horn and strobe light flashing on top of the Outdoor Alerting System, which will remain flashing until an “all clear” is sounded), the warning device will sound a solid 15 second horn blast from the OSU/Weatherbug Outdoor Alerting Systems located at the OSU Soccer Field (West end of Residential Life S-41), OSU outdoor track, Colvin Center Intramural Field (located on top of Wellness Center), North Intramural Field (located on the Southwest Corner of the Fire Publications building), Colvin Center swimming pool/tennis courts and at the Cowboy baseball fields. An “all clear” is announced by *three* short 5-second horn blasts and the strobe light on each device will turn off.

FACILITIES ACCESS

Oklahoma State University is comprised of many buildings that serve varied functions and satisfy the diverse needs of its students, faculty and staff. These facilities are readily accessible to students, faculty and staff during normal working hours.

It is OSU policy to lock the doors of buildings that are not in use. Many buildings, including residence halls, have key or electronic door locks for after-hours security. However, when working or studying in buildings after normal working hours, it is suggested that individual offices be locked, based upon the assumption that unrestricted access to the building is possible.

Some buildings on campus are rarely locked, at the department’s request, since students study and work on projects all hours of the day and night. Again, individual offices should be locked by the user on the presumption that the building is accessible.

Residence hall entrances are generally locked 24/7 and can only be opened by a resident’s student identification card or key. Main entrances are open at various times when the front desk is staffed. Residents residing in apartments are responsible for locking their doors. For questions regarding the open-door schedule, email reslife@okstate.edu. Instances of propped doors have occurred and compromise the safety and security of all residents. Residents are encouraged to take proactive security precautions by shutting propped doors when they are found. Individual rooms should be locked at all times for your safety. Housing staff and OSU PD officers monitor security in the residential facilities and encourage building residents to report suspicious or unusual activity.

PERSONS WITH DISABILITIES

If a classroom, office or meeting space is physically inaccessible, contact Student Accessibility Services for information and assistance at 405-744-7116.

LOST AND FOUND

The Oklahoma State University Police Department maintains a Lost and Found for items turned in to police department staff. Additionally, there are lost and found areas located in many other campus buildings, such as the Student Union, Edmon Low Library and the Colvin Recreation Center. After a certain period of time, all buildings and offices are encouraged to forward any found items to the OSU Police Department to maintain a central location for persons seeking lost property. The OSU Police Department highly encourages turning in items of value such as electronics and jewelry as soon as practical, as the police lost and found is often the first call for persons missing property. Due to limitations on space, the police department lost and found does not accept items of clothing.

The OSU Police Department will maintain a database of items reported missing and cross-check them with items submitted to the department’s lost and found. The police department is unable to cross check with items stored at other locations, hence the need to forward lost and found to the police department. Identified owners will be notified immediately, and arrangements will be made to return the property. Any unidentifiable or unclaimed property will be held for six months prior to being disposed of according to Oklahoma statute. Bicycles are held for nine months and then disposed of or sold at auction. Inquiries about Lost and Found property can be made by calling OSU Police Department Records at 405-744-2844 or 405-744-2845.

TRANSPORTATION

SAFETY TIPS FOR VEHICLE OPERATORS:

- Always stop for pedestrians in crosswalks.
- Watch your “blind spot” for other traffic, such as bicycles and pedestrians, overtaking you when making right turns.
- Always behave in a predictable manner and use turn signals. Other traffic may not always see you or recognize your intentions.
- Oversized vehicles must watch for bicycles, pedestrians, and other traffic when turning.
- Always be mindful of the speed limit. The posted speed limits on campus are much slower than regular city streets due to the close quarters of campus and the high volume of pedestrians.
- The State of Oklahoma has a “Distracted Driving” law. This law prohibits a driver from using anything that would distract them from devoting their full time and attention to the operation of the automobile.
- The State of Oklahoma has also adopted a law prohibiting the use of a hand-held communication device to compose, send or read electronic messages while the vehicle is in motion.

PEDESTRIAN RIGHT OF WAY

Walking is a primary mode of transportation around Oklahoma State University, so it is important for pedestrians to remember that they are also subject to traffic control signals. While vehicles must yield to pedestrians in a clearly marked crosswalk or intersection, pedestrians must yield to vehicles when crossing anywhere else. Even though vehicles are required to yield, always remember to make eye contact with the driver before proceeding into the path of an oncoming vehicle. Pedestrians are also required by law to obey Pedestrian Control Signals (PCS) when crossing at an intersection where those are in use. Only cross at an intersection when the PCS signifies for them to cross. A green light for motor vehicles

does not allow a pedestrian to cross if the PCS is present. Failing to use a marked crosswalk to cross a road between two intersections with traffic lights constitutes the illegal act of jay-walking in Oklahoma, and violators are subject to citation.

SEATBELT SAFETY

The state law in Oklahoma requires both the driver and the front seat passenger to have properly fastened safety belts when the vehicle is in motion. Because OSU is a public university owned by the State of Oklahoma, all traffic ways are considered public, thus requiring seat belts at all times a vehicle is in motion, whether in a parking lot or on a street. All passengers under the age of 13 are required to wear seatbelts or be placed in a child passenger restraint system, and the safest place for them is the back seat.

BIKES ON CAMPUS

In Oklahoma, a bicycle is considered a vehicle when operated on the roadway. As a result, bicycles are subject to the same responsibilities and regulations as autos. The same fines apply to motorists and bicyclists for traffic violations, such as failing to yield to pedestrians, running a stop sign or red light, going the wrong way on a one-way street, or riding on the wrong side of the road. Additionally, there are laws specific to bicycle operators, such as a mandatory white front light and red rear light if the bicycle is being ridden between sunset and sunrise and an allowance for only one person per permanently affixed seat. When operated on sidewalks, bicycles should be aware of, and yield to, pedestrian traffic. If a bicyclist chooses to use a pedestrian crosswalk, they must dismount and walk their bicycle across the street.

ELECTRIC SCOOTERS, KICK SCOOTERS, SEGWAYS, HOVERBOARDS, ROLLER SKATES, ROLLER BLADES AND SKATEBOARDS

As the use of electric scooters, kick scooters, Segways, hoverboards, roller skates, roller blades, skateboards and other motorized vehicles not legally permitted on public streets rises,

guidelines should be followed. Electric scooters, kick scooters, Segways, hoverboards, roller skates, roller blades, skateboards and other motorized vehicles not legally permitted on public streets **ARE PERMITTED** on campus **EXCEPT** in the following locations (with the exception of university-issued Segways):

- On or in any university buildings, structures, stairways, sub-walks, elevated sidewalks, access ramps, steps, retaining walls, handrails or other architectural elements.
- On or in any planting area, grass area or seeded area.
- On streets open for vehicular traffic.
- Where prohibited by sign, OSU Parking or police officer.
- In the immediate area of the Edmon Low Library, including the library mall and fountain areas.
- All parking garages

Whenever any person is riding on these modes, that individual must yield the right-of-way to any pedestrian, bicyclist or other mobility assistance devices for the disabled, and operate in a courteous manner and with due regard for the safety of others. The campus grounds, sidewalks, streets, parking lots and other areas are not designed for or intended to be used by persons riding roller skates, roller blades or skateboards. Therefore, persons using these devices must assume all risks associated with such activities. Roller skates, roller blades and skateboards are to be used on campus as a mode of transportation only. No tricks or extracurricular activities are to be done while using these items.

HOMELAND SECURITY

NATIONAL TERRORISM ADVISORY SYSTEM

The National Terrorism Advisory System, or NTAS, replaced the color-coded Homeland Security Advisory System. This new system will more effectively communicate information about terrorist threats by providing timely, detailed information to the public, government agencies, first responders, airports and other transportation hubs, and the private sector.

NTAS Alerts

After reviewing the available information, the secretary of Homeland Security will decide, in coordination with other federal entities, whether an NTAS Alert should be issued. NTAS Alerts will only be issued when credible information is available.

These alerts will include a clear statement that there is an **IMMINENT THREAT** or **ELEVATED THREAT**. Using available information, the alerts will provide a concise summary of the potential threat, information about actions being taken to ensure public safety, and recommended steps that individuals, communities, businesses and governments can take to help prevent, mitigate or respond to the threat.

The NTAS Alerts will be based on the nature of the threat. In some cases, alerts will be sent directly to law enforcement or affected areas of the private sector, while in others, alerts will be issued more broadly to the public through both official and media channels.

The NTAS Alerts recognize that Americans all share responsibility for the nation's security and should always be aware of the heightened risk of terrorist attack in the United States and what they should do. Oklahoma State University will strive to maintain a regular class schedule; however, the campus may find itself under a state of high alert necessitating increased security to help ensure the safety of all campus residents, employees and visitors.

When a state of high alert exists, OSU will strictly follow Homeland Security guidelines in implementing greater protective measures for all of those concerned. There will be an increased presence of police officers and security in and around all campus facilities, residence halls and classrooms. As conditions warrant, OSU's Emergency Operations Center will be activated, and key staff will assemble to make appropriate decisions for further increases in security measures.

It is a simple fact of life that people lose things. While frustrating at the best of times, the loss can be costly if the item lost was a set of keys or swipe card for a secure environment. This loss could be significant if the security breach leads to theft, vandalism or sabotage; but, it can be dire if it leads to a terrorist obtaining access to a secure area of a water treatment plant, a power distribution center or a biological or chemical laboratory. Any loss of keys or swipe cards should be reported to OSU Police immediately.

Everyone is encouraged to be especially vigilant about unexplained or suspicious packages in their areas. At special events or large gatherings, purses, packages and briefcases will be subject to search. Everyone should be prepared for emergencies and interruptions and review emergency and evacuation plans for their areas.

Please keep in mind that one of the objectives of terrorism is to frighten and disrupt activities of the university. To the extent possible, we want to continue normal activities of the University, but with a greater level of caution.



PREVENTION

ALCOHOL AND DRUG AWARENESS

Oklahoma State University seeks to encourage and sustain an academic environment that respects individual freedoms and promotes the health, safety and welfare of its students, faculty, staff and visitors. These participants are expected to know and follow the applicable laws and all university rules and regulations. Each person is responsible for his/her own behavior.

Oklahoma State University complies with the Drug-Free Schools and Communities Act Amendments of 1989. This act requires that Oklahoma State University certify it has adopted and implemented a program to prevent the unlawful possession, use or distribution of illicit drugs and alcohol by students and employees in order to remain eligible for federal financial assistance. In compliance with the Drug Free Schools and Communities Act, Oklahoma State University publishes information regarding the university's prevention programs related to drug and alcohol abuse prevention which include:

- Standards of conduct that prohibit the unlawful possession, use and distribution of alcohol and illegal drugs on campus and at institution-associated activities;
- Sanctions for violations of federal, state and local laws and university policy;
- A description of health risks associated with alcohol and other drug use and abuse;
- A description of available counseling, treatment rehabilitation and/or re-entry programs for OSU students and employees.
- A complete description of these topics, as provided in the University's annual notification to students and employees, is available at ssc.okstate.edu/education-awareness/daap.html.

As set forth in local, state and federal laws, and the rules and regulations of the university, Oklahoma State University prohibits the unlawful possession, use, sale or distribution of illicit drugs and alcohol by students and employees in buildings, facilities, grounds or other property owned and/or controlled by the university or as part of university activities. With limited exceptions, beer and alcohol are not allowed on campus. Since July 1, 2000, students who are convicted of an offense involving the sale or possession of a controlled substance may become ineligible for federal student aid. For the university's complete drug and alcohol policy, request the Oklahoma State University Student Code of Conduct or the Drug-Free Workplace Policy (Policy 1-1205).

The OSU Police has primary responsibility for the enforcement of state underage drinking laws as well as the enforcement of federal and state drug laws.

Any student or employee of Oklahoma State University who has violated this prohibition shall be subject to disciplinary action including, but not limited to, suspension, expulsion, termination of employment, referral for prosecution and/or completion, at the individual's expense, of an appropriate rehabilitation program. Any disciplinary action shall be taken in accordance with applicable policies of the university.

Drug and alcohol abuse programs are conducted each semester by OSU Alcohol and Substance Abuse Center, Housing and Residential Life, Department of Wellness and the OSU Police Department.

Other resources

OSU ALCOHOL AND SUBSTANCE ABUSE CENTER: 405-744-2818

REACH-OUT HOTLINE: 1-800-522-9054

CRIME PREVENTION

Crime prevention is defined as the anticipation, recognition, and appraisal of a crime risk, and the initiation of some action to remove or reduce that risk. Many campuses around the country investigate and make public the nature and quantity of crimes, as well as how crimes are investigated. Oklahoma State University subscribes to that approach and further believes that the public should know how active the OSU Police are in crime prevention and detection. OSU has experienced success at reducing and preventing crime. Some of the notable efforts are:

- Emergency 911 dialing
- Rave Guardian safety app
- "Blue Phone" Emergency telephone system throughout campus
- 24-hour preventive patrols
- Campus patrolled by uniformed officers on foot, bicycles, Segways and vehicles
- Burglar alarms in key areas
- 24-hour staff in residence halls
- Custodial staff occupies academic buildings after hours and provides information to the OSU Police about suspicious activity or persons in or around the buildings
- Crime prevention seminars and presentations conducted each semester with staff and student groups
- Sexual assault prevention conducted on a continual basis
- Rape Aggression Defense (RAD) presentations on at least a semi-annual basis
- Safe Walk escort service on campus and from campus to the Greek Neighborhood
- Crime Stopper telephone line — 405-744-TIPS (405-744-8477)
- Some parking lots and campus areas monitored by surveillance cameras

- Lighting surveys
- All new students required to complete online sexual violence prevention training.
- Faculty and staff are required to complete Title IX training yearly, either in person or online.

A common theme of all awareness and crime prevention programs is to encourage students and employees to be aware of their responsibility for their own security and the security of others.

During the 2021-2022 academic year, OSU offered approximately 140 crime prevention and security awareness programs. Topics such as personal safety, residence hall security, drug and alcohol abuse awareness and sexual assault prevention are some examples of programs offered during the prior academic year.

In addition to seminars, information is disseminated to students and employees through security alerts, displays, videos, social media posts and emails.

In addition to preventing crime, considerable effort is devoted to crime intervention. All reported crimes are investigated immediately. Follow-up investigations occur to identify the offenders. Where multiple incidents occur, surveillance techniques may be implemented to help apprehend violators. When caught, offenders are dealt with through the Payne County court system and OSU Student Conduct, when appropriate. The OSU Police Department encourages the accurate and prompt reporting of criminal incidents, no matter how insignificant or small. Victims are encouraged to assist in police investigation and subsequent filing of charges. Through these measures, OSU will become a safer community.

To schedule a crime prevention visit or presentation, call 405-744-6523.

CELL PHONE SAFETY APP

Rave Guardian is a mobile device application for students, faculty and staff that is available in the Apple App Store and Google Play. It can immediately connect to the police no matter where you are, and has a format to make a report, a peer-to-peer text alert system, a way to request a Safe Walk escort on campus, a resource guide and a profile that can include pertinent medical information to assist in case of a medical emergency.

SAFETY TIPS

Oklahoma State University is committed to creating the safest campus possible. Personal safety is also the responsibility of each individual. Please take a moment to read the safety tips, always pay attention to your surroundings and if you see something, say something.

PROPERTY PROTECTION:

1. Lock your door whenever you leave your room for any length of time or when sleeping.
2. Secure your vehicle. Close all windows and lock all doors.
3. Never prop open any door.
4. Adequately protect all valuables in your room, such as wallets, jewelry, credit cards, cash, and computers. Do not leave valuables or cash in plain view.
5. Protect your books and put your name in them. Do not leave them in public places.
6. Do not loan your keys to anyone.
7. Never hide your keys outside your apartment or room. Do not put your name or address on your key rings.
8. Take all valuable items home with you during vacations.
9. When in a public place, keep valuable possessions out of sight. If you must leave an area for any length of time, take personal items with you.

PERSONAL SAFETY:

At home, in an apartment building, or in a residence hall:

- Keep your room door locked when you are napping or sleeping.
- Never let unauthorized persons come into your room, enter residence halls, or enter apartment security doors.
- Always ask to see proper identification.
- Never prop open inside or outside doors.
- Do not hide keys outside of your room or apartment. Do not put your name or address on your key rings.
- Avoid working or studying alone in a campus building.
- Never dress in front of a window. Close blinds or curtains after dark.
- If you are awakened by an intruder inside your room, do not attempt to apprehend the intruder. Try to get an accurate description of the intruder and then call the police.
- Any suspicious activity should be reported to the OSU Police immediately.

When driving:

1. Have your car keys in hand when approaching your vehicle so you can enter quickly.
2. Always check underneath your car upon approach and in the rear seat for intruders before entering your automobile.
3. Lock your doors and keep windows rolled up whenever possible.
4. Drive on well-traveled and well-lit streets.
5. Never hitchhike, and never pick up hitchhikers.
6. If someone tries to enter your stopped vehicle, sound the horn and drive to a safe area such as a convenience store.

7. If your vehicle breaks down, ask any person who stops to help to call the police. Do not allow any person access to you or inside your car. Roll down your window no more than an inch. Be aware that an accident may be staged to provide the other driver an opportunity to commit a criminal act.
8. Leave enough room between your car and the one ahead so you can drive around it if necessary.
9. Call ahead when driving to your home or apartment late at night and have someone watch you walk from your car to the residence.
10. Limit distractions such as cell phones, and do not text and drive.

While walking or jogging:

1. Avoid walking or jogging alone, and try not to walk or jog after dark.
2. Avoid dark or vacant areas. Walk along well-lit routes.
3. Be alert to your surroundings. If you suspect you are being followed: Run in a different direction, go to the other side of the street and yell for help, or move quickly to a lighted area, a group of people, or a blue light emergency phone.
4. Have your keys ready when returning to your residence hall or apartment. Keep your personal or valuable items concealed and close to your body.
5. Avoid wearing headphones when walking or jogging. Always be aware of your surroundings and practice risk avoidance techniques.
6. Limit distractions such as cell phones and avoid texting.

SUICIDE PREVENTION

Oklahoma State University has dedicated programs and services that strive to protect emotional health and prevent suicide for our community members. These programs include strengthening mental health, providing support for substance abuse, and creating suicide prevention programs and systems. They also equip university community members with the skills

and knowledge to help themselves and each other in the face of a mental health crisis. We encourage community awareness, understanding and action for young adult mental health.

Below are programs and services that aid in prevention and response to suicidal ideation of community members:

- **JED CAMPUS** — In 2019, the university launched an initiative targeted toward suicide prevention and awareness. The JED Foundation identified Oklahoma State as a designated JED Campus with an overall goal of identifying best practice methods for preventing and bringing awareness to the topic of suicide and mental health within the university community. The JED Campus program is a four-year commitment by the university.
- **STUDENT ASSISTANCE BY MERCY (CALL SAM) 1-855-225-2SAM (2726):** The university partners with Mercy Health System to provide a 24-hour hotline number where students can speak directly and immediately with a licensed counselor. The service provides crisis response to students in distress in coordination with university police and residential life.
- **GRAND MENTAL HEALTH CENTER:** The university partners with community mental health provider GRAND to provide assistance to campus members in the face of a mental health crisis. Crisis services are available 24-7 by utilizing a crisis response line. GRAND has also equipped university police with iPad technology in responding to mental health concerns. OSU community members in distress can communicate with a licensed counselor through the technology and receive immediate evaluation and treatment.
- **GRAND Mental Health Center**
1624 Cimarron Plaza, Stillwater
405-372-2202 (Office)
1-800-722-3611 (24-hour crisis line)

Below are programs specifically targeted toward community awareness and education of suicidal ideation and improved mental health. These programs are available throughout the academic year and sponsored by University Counseling Services, the Department of Wellness and health services.

- **QPR TRAINING:** The QPR program (Question, Persuade, Refer) is a national institute whose mission is to reduce suicidal behaviors and save lives by providing innovative, practical and proven suicide prevention training. The program works to identify signs of crisis and seeks to empower all people, regardless of their background, to make a positive difference in the life of someone they know. The university has many certified instructors who lead QPR workshops throughout the year.
- **MENTAL HEALTH FIRST AID:** Mental Health First Aid is a national program dedicated to teaching skills in response to the signs of mental illness and substance use. The Department of Wellness has invested resources into making this available across the campus community through sponsoring instructors and facilitating workshops. The Mental Health First Aid course is an eight-hour course that teaches how to identify, understand and respond to signs of mental illnesses and substance use disorders. The training provides participants with helpful tools and support for interacting with someone who may be developing a mental health or substance use problem or experiencing a crisis.
- **KOGNITO:** This suicide prevention online training modules is available for faculty, staff and students. These online course modules are designed to help campus personnel and students recognize warning signs of psychological distress, build skills to encourage help-seeking behaviors, and offer others a warm referral to suicide prevention support services.

For more information about mental health visit mentalhealth.okstate.edu.

SUPPORTING STUDENTS IN DISTRESS

Are you concerned about the well-being or safety of a student?
Have you observed student behaviors that caused concern?

If you see something, say something. The vigilance of all community members is critical in keeping the campus safe.

We are unable to mitigate a situation until we are aware of it. The university expects all members of our community to act quickly and responsibly if they hear or see something that is out of the ordinary. It is important to report any concerns, even if they seem minor. Do not assume someone else will call.

Most students will experience sadness, overwhelming stress, and/or crisis during their college years. These experiences will range in severity but can affect a student's wellbeing and success at Oklahoma State. You may interact with students who need assistance. Being aware of signs of distress and resources on campus can help in handling these situations. You play an important role at Oklahoma State University in providing resources to support student success.

For more information on supporting a student in distress go to ssc.okstate.edu/student-support/supporting-students.html.



SEXUAL VIOLENCE INFORMATION

JEANNE CLERY DISCLOSURE OF CAMPUS SECURITY POLICY AND CAMPUS CRIME STATISTICS ACT, AS AMENDED BY THE VIOLENCE AGAINST WOMEN REAUTHORIZATION ACT OF 2013

Oklahoma State University prohibits the offenses of domestic violence, dating violence, sexual assault and stalking (as defined by the Clery Act) and reaffirms its commitment to maintaining a campus environment that emphasizes the dignity and worth of all members of the university community. Toward that end, Oklahoma State University issues this statement of policy to inform the campus community of our programs to address domestic violence, dating violence, sexual assault and stalking as well as the procedures for institutional disciplinary action in cases of alleged dating violence, domestic violence, sexual assault or stalking, which will be followed regardless of whether the incident occurs on or off campus when it is reported to a university official.

Oklahoma State University takes acts of sexual harassment and sexual violence extremely seriously and believes that one victim is too many. The following information, consistent with U.S. Department of Education Title IX guidance, provides details on the university response, resources and remedies to sexual violence. The university hopes that you will help us in our efforts to maintain a safe and productive environment for all members of our community to live, learn and be successful by uniting as a community committed to ending sexual violence and sexual harassment.

Sexual harassment and sexual violence are forms of gender discrimination not tolerated at OSU. Oklahoma State University strongly encourages victims to report all acts of gender discrimination. Additionally, students have the option of filing a formal complaint with Student Conduct as well as with the police. Please be aware that even if an individual chooses not to file a formal complaint, the university can still provide supportive measures, such as changing academic schedules and housing arrangements. These measures may be taken to provide safety for the victim in the educational setting.

Oklahoma State University does not discriminate on the basis of race, color, national origin, sex, qualified disability, religion, sexual orientation, gender identity, veterans' status, genetic information or age in its programs and activities. Therefore, the university will address all complaints of sexual harassment, including sexual violence, the same, regardless of whether the complainant (person filing the complaint) or respondent (person the complaint is filed against) is of a protected class or sex.

Where it is determined that sexual misconduct is more likely than not to have occurred, university sanctions can include suspension or expulsion. Even if law enforcement and criminal justice authorities choose not to prosecute a particular incident, the university may still pursue the incident through the student conduct process. All student conduct processes are separate from law enforcement investigations. In instances where gender discrimination is not addressed through the student conduct system, the university still has the obligation under Title IX to take immediate action to eliminate the harassment, prevent its recurrence and address its effects, irrespective of formal legal processes.

More information and resources can be found at lis2many.okstate.edu.

DEFINITIONS

The following are definitions used by Oklahoma State University and include examples to assist in explaining the behavior. These definitions include Federal Clery Act definitions of sexual assault, dating violence, domestic violence and stalking.

SEXUAL HARASSMENT

Sexual harassment is conduct on the basis of sex that satisfies one or more of the following:

- A. A person acting on behalf of the University in a position of authority conditioning the provision of any aid, benefit, or service of the recipient on an individual's participation in unwelcome sexual conduct (*quid pro quo*);
- B. Unwelcome conduct determined by a reasonable person to be so severe, pervasive, and objectively offensive that it effectively denies a person equal access to the University's education program or activity;
- C. Unwelcome sexual advances, requests for sexual favors, and other verbal or physical conduct that explicitly or implicitly affects an individual's employment, unreasonably interferes with an individual's work performance, or creates an intimidating, hostile or offensive work environment.

Subsections (a) and (c) are not evaluated for severity, pervasiveness, or offensiveness, because such conduct is sufficiently severe to deny access to the University's education program or activities.

SEXUAL MISCONDUCT

Sexual misconduct is the term used to encompass Sexual Assault, Indecent Exposure, and Sexual Exploitation.

SEXUAL ASSAULT: An offense that meets the definition of rape, fondling, incest, or statutory rape as used in the FBI's Uniform Crime Reporting (UCR) program. Per the National Incident-Based Reporting System User Manual from the FBI

UCR Program, a sex offense is “any sexual act directed against another person, without the consent of the victim, including instances where the victim is incapable of giving consent.”

- A. Rape — the penetration, no matter how slight, of the vagina or anus with any body part or object, or oral penetration by a sex organ of another person, without the consent of the victim;
- B. Fondling — the touching of the private body part of another person for the purpose of sexual gratification, without the consent of the victim, including instances where the victim is incapable of giving consent because of his/her age or because of his/her temporary or permanent mental incapacity;
- C. Incest — sexual intercourse between persons who are related to each other within the degrees wherein marriage is prohibited by law;
- D. Statutory Rape — sexual intercourse with a person who is under the statutory age of consent.

SEXUAL EXPLOITATION: Conduct where an individual takes non-consensual or abusive sexual advantage of another for their own benefit, or to benefit anyone other than the one being exploited. Examples of sexual exploitation include, but are not limited to, engaging in voyeurism; sharing of pornographic or other sexually inappropriate material; the intentional removal of a condom or other contraceptive barrier during sexual activity without the consent of a sexual partner; and any activity that goes beyond the boundaries of consent, such as recording of sexual activity, letting others watch consensual sex, or knowingly transmitting a sexually transmitted disease (STD) to another. Allegations of sexual exploitation will be evaluated to determine if they meet the severe, pervasive and objectively offensive standard.

INDECENT EXPOSURE: The act of intentionally exposing one's genitals in public or in front of others, for the purpose of sexual gratification or causing offense. Allegations of Indecent Exposure will be evaluated to determine if they meet the severe, pervasive and objectively offensive standard.

STALKING

Stalking refers to one who engages in a course of conduct directed at a specific person that would cause a reasonable person to fear for their safety or the safety of others or suffer substantial emotional distress.

- A. **COURSE OF CONDUCT** means two or more acts, including, but not limited to, acts in which the stalker directly, indirectly, or through third parties, by any action, method, device, or means, follows, monitors, observes, surveils, threatens, or communicates to or about a person, or interferes with a person's property.
- B. **REASONABLE PERSON** means a person under similar circumstances and with similar identities to the victim.
- C. **SUBSTANTIAL EMOTIONAL DISTRESS** means significant mental suffering or anguish that may, but does not necessarily, require medical or other professional treatment or counseling.

DATING VIOLENCE

Dating violence is violence committed by a person who is or has been in a social relationship of a romantic or intimate nature with another person. The existence of such a relationship shall be determined based on the reporting party's statement and with consideration of the following factors: length of relationship, type of relationship, and frequency of interaction between the persons involved in the relationship. Dating violence includes, but is not limited to, sexual or physical abuse or the threat of such abuse. Dating violence does not include acts that meet the definition of domestic violence.

DOMESTIC VIOLENCE

Domestic violence is a felony or misdemeanor crime of violence committed by a: current or former spouse or intimate partner of the victim;

- A. Person with whom the victim shares a child in common;
- B. Person who is cohabitating with or has cohabited with the victim as a spouse or intimate partner;

- C. Person similarly situated to a spouse of the victim under the domestic or family violence laws of the jurisdiction in which the crime of violence occurred; or
- D. Any other person against an adult or youth victim who is protected from that person's acts under the domestic or family violence laws of the jurisdiction in which the crime of violence occurred.

For the purpose of complying with the requirements of this section and §668.41, any incident meeting this definition is considered a crime for the purposes of Clery Act reporting.

Domestic violence is a pattern of abusive behavior in any relationship that is used by one partner to gain or maintain power and control over another intimate partner. Domestic violence can be physical, sexual, emotional, economic, or psychological actions, or threat of actions that influence another person.

RETALIATION

Behaviors including but not limited to, intimidation, threats, coercion, or discrimination against a person who, acting in good faith, brings a complaint forward or against an individual who has participated in an investigation or conduct process because of their report or participation. For more information, see the Board of Regents for the Oklahoma Agricultural and Mechanical Colleges Policy 3.06 Non-Retaliation.

CONSENT

Effective consent is informed, freely and actively given, using mutually understandable words or actions that indicate a willingness to participate in mutually agreed upon sexual activity. Initiators of sexual activity are responsible for obtaining effective consent. Silence or passivity is not effective consent. The use of intimidation, coercion, threats, force, or violence negates any consent obtained. Consent is not effective if obtained from an individual who is incapable of giving consent due to lack of consciousness, age, mental disability, or incapacitation due to the use of drugs or alcohol. This definition is used for the purpose of sexual misconduct policy.

PROCEDURES VICTIMS SHOULD FOLLOW IF A CRIME OF DOMESTIC VIOLENCE, DATING VIOLENCE, SEXUAL ASSAULT AND STALKING OCCURS

- A. If you are not safe and need immediate help, call the police. If the incident happened on campus, call the OSU Police Department at 405-744-6523. If the incident occurred elsewhere in Stillwater, call the Stillwater Police Department at 405-372-4171. If the incident happened anywhere else, call the law enforcement agency that has jurisdiction in the location where it occurred.
- B. Do what you need to do to feel safe. Go to a safe place or contact someone with whom you are comfortable. You can call the **STILLWATER 24-HOUR RAPE CRISIS LINE** at **405-624-3020** to get advice and discuss options for how to proceed.
- C. OSU students can also call an **OSU SEXUAL ASSAULT VICTIM ADVOCATE** at **405-564-2129**.
- D. Do not shower, bathe, douche, change or destroy clothes, eat, drink, smoke, chew gum, take any medications or straighten the room or place of the incident. Preserving evidence is critical for criminal prosecution. Although you may not want to prosecute immediately after the incident, that choice will not be available without credible evidence. The evidence collected can also be useful in the campus conduct process. Victims of sexual assault, domestic violence, stalking and dating violence are encouraged to also preserve evidence by saving text messages, instant messages, social networking pages, other communications and keeping pictures, logs or other copies of documents, if they have any, that would be useful to university adjudicators/investigators or police.

- E. Go to the Stillwater Medical Center ER to receive care for any physical injuries that may have occurred. While in the emergency room, treatment will be provided for sexually transmitted diseases and to prevent pregnancy if desired. These services are free of charge. If you choose not to obtain a Sexual Assault Nurse Examination but want testing or treatment for potential sexually transmitted infections, you can visit Payne County Health Department free of charge or University Health Services or Stillwater Life Services for low-cost options.
- F. Upon arrival at Stillwater Medical Center, you will be taken to a private exam area. A Sexual Assault Nurse Examiner (SANE), as well as a Sexual Assault Response Advocate (SARA) and police officer will be available for support. You will be examined by the nurse in order to treat any injuries and to gather evidence. Note: a sexual assault exam can be performed up to 120 hours (five days) after the assault.
- G. With your permission, the Sexual Assault Response Advocate will support you throughout the entire exam, which will be performed by the nurse. The advocate will provide a packet of written materials that contains information about common reactions to sexual assault, follow-up medical needs and support services.

As time passes, evidence may dissipate or become lost or unavailable, thereby making investigation, possible prosecution, disciplinary proceedings or obtaining protection from abuse orders related to the incident more difficult. If a victim chooses not to make a complaint regarding an incident, he or she nevertheless should consider speaking with OSU Police or other law enforcement to preserve evidence in the event that the victim decides to report the incident to law enforcement or the University at a later date to assist in proving that the alleged criminal offense occurred or that may be helpful in obtaining a protection order.

INVOLVEMENT OF LAW ENFORCEMENT AND CAMPUS AUTHORITIES

Although the university strongly encourages all members of its community to report violations of this policy to law enforcement (including OSU Police and/or local police), it is the victim's choice whether or not to make such a report. Furthermore, victims have the right to decline to notify law enforcement. However, the Student Conduct and Office of Equal Opportunity will assist any victim with notifying law enforcement if the victim so desires. The OSU Police Department may also be reached directly by calling 405-744-6523, in person at 224 N. Orchard Street, Stillwater, OK 74074. Additional information about the OSU Police department may be found online at safety.okstate.edu/police/.

INVOLVEMENT OF LAW ENFORCEMENT AND CAMPUS AUTHORITIES

If you have been the victim of domestic violence, dating violence, sexual assault, or stalking, you should report the incident promptly by calling, writing or coming into the office to report in person (if the victim so desires.)

STUDENTS contact the Deputy Title IX Coordinator: Aleigha Mariott, Ph.D., 405-744-5470, 232 Student Union, aleigha.mariott@okstate.edu

EMPLOYEES should contact Title IX Coordinator: Jamie Milek, 405-744-1156, 401 General Academic Building, jamie.milek@okstate.edu

Reports of all domestic violence, dating violence, sexual assault and stalking made to OSU Police will automatically be referred to the Title IX Coordinator and Deputy Coordinator for investigation regardless of if the complainant chooses to pursue criminal charges.

PROCEDURES THE UNIVERSITY WILL FOLLOW WHEN A CRIME OF DOMESTIC VIOLENCE, DATING VIOLENCE, SEXUAL ASSAULT AND STALKING IS REPORTED

The University has procedures in place that serve to be sensitive to victims who report domestic violence, dating violence, sexual assault, and stalking, including informing individuals about their right to file criminal charges as well as the availability of counseling, health, mental health, victim advocacy, legal assistance, visa and immigration assistance, student financial aid and other services on and/or off campus as well as additional remedies to prevent contact between a complainant and a respondent, such as changes to housing, academic, protective orders, transportation and working situations, if reasonably available. The University will make such accommodations or protective measures, if the victim requests them and if they are reasonably available, regardless of whether the victim chooses to report the crime to the OSU Police. Students should contact Aleigha Mariott, Ph.D. Deputy Title IX Coordinator. Employees should contact Jamie Milek, Title IX Coordinator.

If a report of domestic violence, dating violence, sexual assault or stalking is reported to the University, below are the procedures that the University will follow:

Domestic Violence

1. Institution will assess immediate safety needs of complainant
2. Institution will assist complainant with contacting local police if complainant requests AND complainant provided with contact information for local police department
3. Institution will provide written instructions on how to apply for Protective Order
4. Institution will provide written information to complainant on how to preserve evidence
5. Institution will assess need to implement interim or long-term protective measures to protect the complainant, if appropriate

6. Institution will provide the victim with a written explanation of the victim's rights and options
7. Institution will provide a No Contact Order to all parties if deemed appropriate

Dating Violence

1. Institution will assess immediate safety needs of complainant
2. Institution will assist complainant with contacting local police if complainant requests AND provide the complainant with contact information for local police department
3. Institution will provide written instructions on how to apply for Protective Order
4. Institution will provide written information to complainant on how to preserve evidence
5. Institution will assess need to implement interim or long-term protective measures to protect the complainant, if appropriate
6. Institution will provide the victim with a written explanation of the victim's rights and options
7. Institution will provide a No Contact Order to all parties if deemed appropriate

Sexual Assault

1. Depending on when reported (immediate vs delayed report), institution will provide complainant with access to medical care
2. Institution will assess immediate safety needs of complainant
3. Institution will assist complainant with contacting local police if complainant requests AND provide the complainant with contact information for local police department
4. Institution will provide complainant with referrals to on and off campus mental health providers
5. Institution will assess the need to implement interim or long-term protective measures, if appropriate.

6. Institution will provide the victim with a written explanation of the victim's rights and options
7. Institution will provide a No Contact Order to all parties if deemed appropriate
8. Institution will provide written instructions on how to apply for Protective Order
9. Institution will provide a copy of the policy applicable to sexual assault and inform the complainant regarding timeframes for inquiry, investigation, and resolution
10. Institution will inform the complainant and respondent of the outcome of the investigation, whether or not the complaint will progress to a hearing
11. Institution will enforce the anti-retaliation policy and take immediate and separate action against parties that retaliate against a person for complaining of sex-based discrimination or for assisting in the investigation

Stalking

1. Institution will assess immediate safety needs of complainant
2. Institution will assist complainant with contacting local police if complainant requests AND provide the complainant with contact information for local police department
3. Institution will provide written instructions on how to apply for Protective Order
4. Institution will provide written information to complainant on how to preserve evidence
5. Institution will assess need to implement interim or long-term protective measures to protect the complainant, if appropriate
6. Institution will provide the victim with a written explanation of the victim's rights and options
7. Institution will provide a No Contact Order to all parties if deemed appropriate

SUPPORT SERVICES

OSU SEXUAL ASSAULT VICTIM ADVOCATES

Confidential service

OSU's Victim Advocate can confidentially provide students with information about on- and off-campus resources available to victims. OSU Victim Advocates can be reached at 405-564-2129. OSU Victim Advocates can also be reached by email at advocate@okstate.edu.

UNIVERSITY COUNSELING SERVICES

Confidential service

Oklahoma State University Counseling Services provides individual and group counseling services for those victimized by sexual or physical assault. Services are available to all Oklahoma State University students and their partners. Stillwater Domestic Violence Services are also available to assist victims of sexual assault. See "Other Resources" for telephone numbers.

STUDENT CONDUCT

Cases involving students who are accused of non-academic misconduct might be assigned to Student Conduct. Persons found responsible for sexual misconduct could be suspended or expelled from OSU. You may obtain further information by contacting Student Conduct at 405-744-5470. A copy of the Student Code of Conduct can also be obtained at various locations on campus and at

ssc.okstate.edu/student-conduct/code-of-conduct.html.

SUPPORTIVE MEASURES

OSU will provide written notification to victims about options for available supportive measures. Upon receipt of a report of domestic violence, dating violence, sexual assault or stalking, OSU will provide written notification to students and employees involved about supportive measures available to them, including academic, living, transportation, protective

orders and working situations. The written notification will include information regarding the accommodation options, available assistance in requesting accommodations and how to request accommodations and protective measures.

- A. Assistance in Reporting: Support in filing a complaint with the university conduct process and the appropriate law enforcement agencies against the individual(s) who caused harm.
- **OSU COMPLAINT PROCESS:** A complaint is an official report to the university alleging that an OSU student has violated the Student Code of Conduct. You can go online to ssc.okstate.edu/report to submit a complaint online or to complete a paper complaint form.

If you have been the victim of domestic violence, dating violence, sexual assault or stalking, you should report the incident promptly by calling, writing or coming into the office to report in person (if the victim so chooses.)

Students should contact the Deputy Title IX Coordinator: Aleigha Mariott, Ph.D., 405-744-5470, 232 Student Union, aleigha.mariott@okstate.edu.

Employees should contact Title IX Coordinator: Jamie Milek, 405-744-1156, 401 General Academic Building, jamie.milek@okstate.edu.

Reports of all domestic violence, dating violence, sexual assault and stalking made to the OSU Police Department will automatically be referred to the Title IX Coordinator and Deputy Coordinator for investigation regardless of if the complainant chooses to pursue criminal charges.

- **POLICE REPORT PROCESS:** A police report begins the moment you contact the authorities about a given situation, whether it be a crime that was committed earlier or a crime currently in progress. The OSU Police communications officer will obtain basic information from you about the incident and relay the information to patrol officers working in your area. You can have the officers meet you on scene or you can request they meet you at the police department in an effort to resolve the issue, document the facts of the incident and begin

investigating the case if follow-up is required. By simply calling the OSU Police at 405-744-6523, the reporting process begins. The OSU Police Department operates 24 hours a day, seven days a week, including all holidays and university breaks.

Although the university strongly encourages all members of its community to report violations of this policy to law enforcement (including the OSU Police Department and/or local police), it is the victim's choice whether or not to make such a report. Furthermore, victims have the right to decline to notify law enforcement. However, the Student Conduct and Office of Equal Opportunity will assist any victim with notifying law enforcement if the victim chooses to do so. The OSU Police Department may also be reached directly by calling 405-744-6523 or visiting in person at 224 N. Orchard Street, Stillwater. Additional information about the OSU Police Department may be found online at safety.okstate.edu/police/.

- B. **PROTECTIVE ORDERS AND EMERGENCY TEMPORARY PROTECTIVE ORDER:** These are court-ordered petitions that prohibit the respondent from contacting the complainant. To pursue a protective order, the complainant will need to complete the necessary petition during business hours at Wings of Hope, located at 3800 N. Washington St., Stillwater. Once the petition is completed, the complainant must file it with the Payne County Court Clerk. Wings of Hope can assist with this process. If the petition is granted, the complainant should keep a copy with them at all times. In addition, copies should be provided to each law enforcement agency where the complainant works and resides.

If a complainant needs a protective order outside of business hours, an emergency temporary protective order is necessary. On the OSU campus, an officer can assist with a petition and will seek approval for an emergency temporary protective order from a county judge. If granted, the officer will provide the complainant with a copy of the approved order to be kept with them at all times. This temporary protective order is only good until

the next business day. The following day, the complainant will need to contact Wings of Hope for help with a protective order.

If the respondent violates a protective order/emergency temporary protective order at any time or place, the complainant should immediately call 911 or the law enforcement agency that has jurisdiction where the violation occurred. On the OSU campus, call 405-744-6523. For violations occurring in the City of Stillwater, call 405-372-4171.

Oklahoma State University complies with Oklahoma law in recognizing emergency orders of protection and protective orders by: enforcement of the mandates prescribed within the order while within the jurisdiction of OSU. Any person who obtains an order of protection from Oklahoma or any foreign protective order (protective orders from jurisdictions outside of Oklahoma) should provide a copy to the OSU Police. A complainant may then meet with OSU Police or Student Conduct to develop a safety action plan, which is a plan for campus police and the victim to reduce risk of harm while on campus or coming and going from campus. This plan may include, but is not limited to: escorts, special parking arrangements, changing classroom location or allowing a student to complete assignments from home. The university cannot apply for a legal order of protection, no contact order, or restraining order for a victim.

Type Of Order

- Orders of protection
- No contact orders
- Restraining orders
- Similar lawful orders issued by a criminal, civil, or tribal court

The victim is required to apply directly for these services. Wings of Hope will assist in applying for an order of protection. 3800 N. Washington Street, Stillwater, OK 74075, 405-372-9922.

Domestic Violence

Civil Protection Order — up to 5 years, can be renewed

Who Can File

Family or household members including:

- Spouses, former spouses
- Parent, child, foster parent
- People who have kids together
- Intimate partners who lived together in the last 5 years

Same sex couples are eligible

Court Filed In

Domestic Relations Court

- where victim lives
- where abuser lives or has a business, or
- where the incident(s) occurred

Based On

Causing or trying to cause injury or placing someone in fear of imminent serious harm. *(Courts use different requirements for how recent the incident must be.)*

Stalking

Protection Order — up to 5 years, can be renewed

Who Can File

Any person who is a victim of stalking.

No relationship with stalker is required.

Court Filed In

Common Pleas Court

- where victim lives (if family or household member, can be filed as DV Protection Order, see previous)

Based On

Pattern of conduct (2 or more events)

- closely related in time,
- that cause distress or make a victim believe the stalker will cause harm

Sexually Oriented Offense

Protection Order — up to 5 years, can be renewed

Who Can File

Any person who was a victim of a sexually oriented offense (see ORC 2950.01). *No relationship with an offender is required. Case does not have to be criminally prosecuted.*

Court Filed In

Common Pleas Court

- where victim lives

Based On

Sexual assault or unwanted sexual contact (see ORC 2950.01)

Juvenile

Protection Order — until abuser reaches age 19

Who Can File

Victim of abuse by a person who is

- under age 18, or
- the victim's parent, or
- other household member, or
- other parties the Court approves.

Court Filed In

Juvenile Court

- where victim lives

Based On

Assault, stalking, sexual offenses, threats of harm or aggravated trespass.

C. NO CONTACT ORDER: The University may issue an institutional no contact order if deemed appropriate or at the request of the victim or accused. If the University receives a report that such an institutional no contact order has been violated, the University will initiate disciplinary proceedings appropriate to the status of the accused (student, employee, etc.) and will impose sanctions if the accused is found responsible for violating the no contact order.

ACCOMMODATIONS AND PROTECTIVE MEASURES AVAILABLE FOR VICTIMS

At the victim's request, and to the extent of the victim's cooperation and consent, university offices will work cooperatively to assist the victim in obtaining accommodations. If reasonably available, a victim may be offered changes to academic, living, working, protective measures or transportation situations regardless of whether the victim chooses to report the crime to campus police or local law enforcement. Examples of modifications include:

- D. SAFETY MEASURES:** Coordination of any reasonable arrangements that are necessary for ongoing safety. This includes transportation arrangements or providing an escort.
- E. LIVING ARRANGEMENTS:** Assistance in changing participants' on-campus living arrangements to ensure safety and a comfortable living situation.
- F. ACADEMIC ARRANGEMENTS:** Assistance in adjusting academic schedules as well as providing access to academic support services.
- G. CHANGE IN WORK SCHEDULES:** Assistance in changing on campus work schedules to ensure safety and a comfortable work environment.

To request changes to academic, living, transportation and/or working situations or protective measures a victim should contact the following:

STUDENTS contact the Deputy Title IX Coordinator:
Aleigha Mariott, Ph.D., 405-744-5470, 232 Student Union,
aleigha.mariott@okstate.edu

EMPLOYEES should contact Title IX Coordinator:
Jamie Milek, 405-744-1156, 401 General Academic Building,
jamie.milek@okstate.edu

If the victim wishes to receive assistance in requesting these accommodations, they should contact a victim advocate at 405-564-2129. OSU Victim Advocates can also be reached by email at advocate@okstate.edu.

OSU will provide written notification to victims about options for available supportive measures. Additionally, the university will maintain as confidential any protective measures or accommodations that are put in place, to the extent that maintaining such confidentiality would not impair the ability of the university to provide the supportive measures. Any necessary disclosure of information will be communicated to the complainant in compliance with the Family Educational Rights and Privacy Act (FERPA).

UNIVERSITY-INITIATED PROTECTIVE MEASURES

In addition to those protective measures previously described, the Deputy/Title IX Coordinator or their designee will determine whether interim interventions and protective measures should be implemented, and, if so, take steps to implement those protective measures as soon as possible. Examples of interim protective measures include but are not limited to: a university order of no contact, residence hall relocation, adjustment of course schedules, a leave of absence, or reassignment to a different supervisor or position. These remedies may be applied to one, both, or multiple parties involved. Violations of the Deputy/Title IX Coordinator's directives and/or protective measures may constitute related violations that may lead to additional disciplinary action. Protective measures imposed may be temporary pending the results of an investigation or may become permanent as determined by Oklahoma State University.

CONFIDENTIALITY

Victims may request that directory information on file with the University be withheld by completing and submitting a Buckley Form with the Office of the Registrar. The form is available for download at registrar.okstate.edu/site-files/documents/request_to_withhold_directory_information.pdf.

Regardless of whether a victim has opted-out of allowing the University to share directory information, personally identifiable information about the victim and other necessary parties will be treated as confidential and only shared with

persons who have a specific need-to-know, i.e., those who are investigating/adjudicating the report or those involved in providing support services to the victim, including accommodations and protective measures. By only sharing personally identifiable information with individuals on a need-to-know basis, the university will maintain as confidential any protective measures or accommodations that are put in place, to the extent that maintaining such confidentiality would not impair the ability of the university to provide the supportive measures. The university does not publish the name of crime victims or other identifiable information regarding victims in the daily crime log or in the annual crime statistics that are disclosed in compliance with the Jeanne Clery Disclosure of Campus Security Policy and Campus Crime Statistics Act. Furthermore, if a timely warning notice is issued on the basis of a report of domestic violence, dating violence, sexual assault or stalking, the name of the victim and other personally identifiable information about the victim will be withheld.

Any necessary disclosure of information will be communicated to the complainant in compliance with the Family Educational Rights and Privacy Act (FERPA).

ADJUDICATION OF VIOLATIONS

All disciplinary processes are separate from law enforcement investigations. Even if law enforcement and criminal justice authorities choose not to prosecute a particular incident, the university may still pursue the incident through the disciplinary process.

We want all participating parties to be knowledgeable about the process that occurs once a complaint is filed.

STUDENT CONDUCT PROCESS FOR ALLEGATIONS OF SEXUAL VIOLENCE

POLICIES

These policies are applicable to students accused of domestic violence, dating violence, sexual assault and stalking.

STUDENT CODE OF CONDUCT:

campuslife.okstate.edu/student-conduct/

INTERIM TITLE IX POLICY:

hr.okstate.edu/equal-opportunity/title-ix.html

FILING A FORMAL COMPLAINT

Formal complaints can be filed online, mail, email, or in person in 328 Student Union, reportconcerns.okstate.edu, or student.conduct@okstate.edu. In order for disciplinary action to be taken, a signed formal complaint must be filed and the complainant must participate in the investigative and hearing processes.

PROCESS

The following describes the investigation process, the hearing, and the outcome of the hearing. Student Conduct staff will be available to explain the process as requested. The student conduct process will be a prompt, fair, and impartial investigation and resolution process. This means that the process will be completed within a reasonable timeframe and without undue delay. Usually, the resolution of domestic violence, dating violence, sexual assault and stalking complaints are completed within a reasonably prompt timeframe. However, extended time frames for good cause will be communicated to the complainant and respondent. The process will be conducted in a manner that is consistent with the university's policies and will be transparent to all

parties. The victim that submits the complaint is referred to as the complainant. The alleged individual is referred to as the respondent. Lastly, the student conduct process will be conducted by university officials who do not have conflict of interest or bias for the complainant or respondent. University officials involved in the investigation or adjudication of domestic violence, dating violence, sexual assault and stalking complaints are trained annually on the issues related to domestic violence, dating violence, sexual assault, and stalking as well as how to conduct an investigation and hearing process that protects the safety of the victim and promotes accountability. Furthermore, each policy provides that:

1. The complainant and the respondent will have timely notice for meetings at which the complainant or respondent, or both, may be present;
2. The complainant, the respondent and appropriate officials will have timely and equal access to any information that will be used during a disciplinary hearing;
3. The complainant and the respondent will have the same opportunities to have an advisor present during the disciplinary hearing. The complainant and the respondent each have the opportunity to be advised by an advisor of their choice at any stage of the process and to be accompanied by that advisor to any related meeting or hearing. The University will not limit the choice of advisor or presence for either the complainant or the respondent in any meeting or disciplinary hearing.
4. The complainant and the respondent will be notified simultaneously, in writing, of the decision of any disciplinary hearing; and
5. Where an appeal is permitted, the complainant and the respondent will be notified simultaneously in writing of the procedures to appeal the outcome or disciplinary proceeding. When an appeal is filed, the respondent and complainant will be notified simultaneously in writing of any change to the final result once the appeal is resolved.

INVESTIGATION:

- A. The complainant and respondent will be notified of receipt of the complaint.
- B. A university official will separately meet with the complainant and respondent to discuss the complaint submitted, review the investigation and hearing processes.
- C. An investigation will be conducted by a non-biased Investigator. This investigation will include meeting personally with the complainant, meeting personally with the respondent(s), meeting personally with any witnesses and reviewing any documentary information.
- D. The investigation will be adequate, reliable and impartial. The investigator will compile an investigation report, which will be fact-checked by the complainant and respondent.
- E. The university official will determine if a conduct hearing is possible based on the available information. If it is determined that the university will proceed with a conduct hearing, the complainant and the respondent(s) will be notified of the hearing date.
- F. The complainant and respondent(s) are allowed one advisor to be present during the investigation process.

HEARING:

- A. Hearing notification will occur at least 15 days in advance and include the hearing date, time and location. Hearings will be scheduled around academic schedules.
- B. Allegations involving a complainant and respondent will be heard by the Student Conduct Committee Hearing Panel, which is comprised of a faculty member, a staff member and a student.
- C. The hearing includes opening statements, presentation of the investigation report, presentation of information by complaint and respondent, questions to each party and closing statements.

- D. Each party is permitted to have a person of their choosing accompany them throughout the hearing as an advisor. The primary role of the advisor is to aid each party in recounting their experience. If the case falls under Title IX policy, you are required to have an advisor present in the hearing to ask questions of the other party. If you are unable to obtain an advisor, the university will provide one for you.
- E. Each party is permitted to be present during the hearing (except during deliberations). All parties can be in the same room in a pre-arranged, non-threatening location or in separate rooms with a video conference option.
- F. The standard of proof used in all university conduct hearings is preponderance of the evidence, which means the determination to be made is whether it is more likely than not a violation occurred. This is significantly different than proof beyond a reasonable doubt, which is required for a criminal prosecution.

OUTCOME:

- A. Possible outcomes include the entire range of sanctions listed in the *Student Code of Conduct*. When it is determined that sexual violence is more likely than not to have occurred, the outcome can include separation from the university.
- B. Respondents and complainants will be informed simultaneously in writing of the outcome within two business days after the hearing.
- C. Each party has the right to appeal the decision reached through the hearing proceedings within 10 business days after the hearing and they have the right to respond if an appeal is submitted by the other party.

POSSIBLE SANCTIONS:

Possible sanctions in an outcome could include the following restrictions: educational and behavioral change requirement, class removal, no contact order, restitution, residence hall status change, conduct probation, conduct suspension and/or conduct expulsion.

EMPLOYEE PROCESS FOR ALLEGATIONS OF SEXUAL VIOLENCE

POLICIES

These policies are applicable to employees accused of domestic violence, dating violence, sexual assault and stalking. See interim Title IX policy: hr.okstate.edu/equal-opportunity/title-ix.html.

FILING A FORMAL COMPLAINT

Formal complaints can be filed online hr.okstate.edu/equal-opportunity/reporting.html, by mail, email (eeo@okstate.edu), or in person at 401 General Academic Building. In order for disciplinary action to be taken against a university employee, it may be necessary for a signed formal complaint to be filed and for the complainant to cooperate with the university's investigative process. Employees may contact the Title IX Coordinator, Jamie Milek at (405) 744-1156.

PROCESS:

The following describes the investigation process, the hearing and the outcome of the hearing. The Office of Equal Opportunity staff will be available to explain the process as requested. The process will be a prompt, fair and impartial investigation and resolution process to be completed within a reasonable timeframe without undue delay. Extended time frames for good cause will be communicated to the complainant and respondent. The process will be conducted in a manner that is consistent with the university's policies and will be transparent to all parties. The victim that submits the complaint is referred to as the complainant. The alleged individual is referred to as the respondent. The employee process will be conducted by university officials who do not have conflict of interest or bias for the complainant or respondent. University officials involved in the investigation or adjudication of domestic violence, dating violence, sexual

assault and stalking complaints are trained annually on the issues of domestic violence, dating violence, sexual assault and stalking as well as how to conduct an investigation and hearing process that protects the safety of the victim and promotes accountability.

Furthermore, the policy provides that:

1. The complainant and the respondent will have timely notice for all meetings.
2. The complainant, respondent and appropriate officials will have timely and equal access to information that will be used during a hearing.
3. The complainant and Respondent may have their own advisor of their choice. If the complainant or respondent do not have an advisor, one will be provided by the university at no cost to either party.
4. The complainant and respondent will be notified in writing upon the conclusion of an investigation with the name and contact information of a trained decision maker assigned to conduct the hearing as well as written information regarding the hearing process.
5. Where an appeal is permitted, the complainant and respondent will be notified in writing of the procedures to appeal the outcome. When an appeal is filed, the complainant and respondent will be notified in writing of any change in the outcome once the appeal is resolved.

INVESTIGATION:

- A. The complainant and respondent will be notified of receipt of the complaint. When the respondent is an employee, the notice will also be provided to the respondent's supervisor and the appropriate senior administrator, with sensitivity to protect the privacy of the complainant and respondent. The notice will detail the allegations, the specific alleged policy violation(s), and will include information related to the *Board of Regents for the Oklahoma Agricultural and Mechanical Colleges Policy, 3.06, Non-Retaliation*.

- B. The complainant and the respondent are allowed to have an advisor present during the investigation process.
- C. A non-biased investigator will conduct an adequate, reliable and impartial investigation. This investigation will include meeting with the complainant, meeting with the respondent, meeting with witnesses and reviewing any documentary information.
- D. Upon conclusion of the investigation, the complainant and the respondent will be provided with the investigation report, and both the complainant and the respondent will have ten (10) business days to confirm the accuracy of the report and provide feedback to the investigator.

HEARING:

- A. Upon conclusion of the investigation, the complainant and the respondent will be notified in writing with the name and contact information of the decision maker assigned to conduct the live hearing that will be recorded by audio- or audio-visual means. Each party is present for the hearing in the same room in a pre-arranged non-threatening location, or in separate rooms with a video conference option.
- B. The complainant and the respondent will be notified of the scheduled date, time, location of the hearing and written information of the hearing process. The complainant and respondent may provide the decision maker with the name and contact information of their advisor, supporting evidence and a list of witnesses within ten (10) days of receipt of the hearing notification.
- C. The decision maker will set forth the rules of procedure for the hearing. The complainant and the respondent are allowed a reasonable time to present their opening statement and to ask relevant questions to their respective witnesses. Cross-examination must be conducted by the other party's advisor.

- D. The decision maker will determine the relevance of questions and may also ask questions of the complainant, respondent and witnesses for clarification.
- E. The standard of evidence to be used to make a determination is the preponderance of the evidence, which means the determination to be made is whether it is more likely than not a violation has occurred. This is significantly different from proof beyond a reasonable doubt, which is required for criminal prosecution.

OUTCOME:

- A. Following the hearing, the decision maker will issue a written determination within five (5) business days. If more time is required to issue the determination, the decision maker will notify the parties.
- B. The decision maker's document will include the allegations made against the respondent, description of the procedures, notifications made to parties, interviews, hearings and findings of facts that support the determination. The document will also include an explanation of the result of each allegation and a determination as to whether the respondent did or did not violate policy.
- C. The complainant and the respondent will be notified of any disciplinary actions/sanctions against the respondent and remedies provided to the complainant. Copies of the written determination are provided to both parties, and their respective department heads to include the deans, the provost's office, and /or vice presidents.
- D. The complainant and the respondent will be provided with written procedures and bases for appeal. The determination will become final one (1) day after the appeal deadline.

POSSIBLE SANCTIONS:

If the decision maker determines the respondent is deemed responsible by a preponderance of the evidence, possible sanctions include corrective action up to termination of

employment as referenced in *Oklahoma State University Policies and Procedures 3-0720, Corrective Actions and Dismissals for Staff*, or in the case of faculty, as referenced in the department's faculty handbook.

ON- AND OFF-CAMPUS RESOURCES

Sexual harassment and sexual violence can be emotionally disruptive, and it takes time to come to terms with such major stress. In addition to support that may be found in family and friends, the following agencies and departments can serve as resources.

Upon notification or request, the university will provide to students and employees information about existing counseling, health, mental health, victim advocacy, legal assistance, visa and immigration assistance and other services available for victims both within the university and in the community.

It is important to be aware that different individuals who one may contact for assistance following an incident may have different responsibilities regarding confidentiality, depending on their position. Under state law, some individuals can assure the victim of confidentiality, including counselors, medical professionals and certified victims' advocates. In general, however, any other university employee cannot guarantee complete confidentiality, unless specifically provided by law. Universities must balance the needs of the individual victim with an obligation to protect the safety and wellbeing of the community at large.

OSU will protect the identity of victims and other necessary parties. The university is required to complete publicly available record keeping data on crimes that occur on campus. In these reports, personally identifying information about the victim is excluded.

OSU SEXUAL ASSAULT VICTIM ADVOCATES

Confidential service

OSU's Victim Advocate can confidentially provide students with information about on- and off-campus resources available to victims.

405-564-2129 Call or text 24/7.

Email: advocate@okstate.edu

[1is2many.okstate.edu/resources/victim-advocates.html](https://www.okstate.edu/resources/victim-advocates.html)

COUNSELING RESOURCES

Confidential services

OSU STUDENT COUNSELING CENTER

320 Student Union

405-744-5472

A counselor is available 24 hours a day at Call SAM (1-855-225-2726).

WINGS OF HOPE

3800 N. Washington Ave.

405-372-9922

24-hour Crisis Line: **405-624-3020**

wingsofhopeok.com

PSYCHOLOGICAL SERVICES CENTER

118 Psychology Building

405-744-5975

psychology.okstate.edu/osupsc

OTHER LOCAL SERVICES AVAILABLE TO VICTIMS

Non-confidential services

OSU POLICE DEPARTMENT

104 USDA Building, OSU Campus

405-744-6523

safety.okstate.edu/police

STILLWATER POLICE DEPARTMENT

723 S. Lewis St.

405-372-4171

stillwater.org/page/home/government/departments-divisions/police-department

OSU STUDENT CONDUCT

328 Student Union

405-744-5470

Email: student.conduct@okstate.edu

campuslife.okstate.edu/student-conduct/

TITLE IX COORDINATOR

201 General Academic Building

405-744-1156

Email: eeo@okstate.edu

eeo.okstate.edu

MEDICAL SERVICES

It is important to have a thorough medical examination after a sexual assault even if the victim does not have any apparent physical injuries. Medical providers can treat injuries and test for sexually transmitted infections.

UNIVERSITY HEALTH SERVICES (on-campus)

1202 W. Farm Road

405-744-7665

uhs.okstate.edu

STILLWATER MEDICAL CENTER (off-campus)

1323 W. Sixth Ave.

405-372-1480

stillwater-medical.org

Additional information on resources as well as educational information on sexual violence prevention can be found at 1is2many.okstate.edu.

Also, reference changingourcampus.org for more information and resources.

VICTIM BILL OF RIGHTS

- Survivors shall be notified of their options to notify law enforcement and campus authorities, which includes the option not to notify such authorities.
- Accuser and accused must have the same opportunity to have others present.
- Both parties shall be informed of the outcome of any disciplinary proceeding.
- Survivors shall be notified of counseling services.
- Survivors shall be notified of options for changing academic and living situations.

When a student or employee reports that they have been a victim of dating violence, domestic violence, sexual assault or stalking, whether on- or off-campus, the university will provide a written explanation of the student's or employee's rights and options.

DEFINITIONS UNDER OKLAHOMA LAW

CONSENT: The term "consent" means the affirmative, unambiguous and voluntary agreement to engage in a specific sexual activity during a sexual encounter which can be revoked at any time. Consent cannot be:

1. Given by an individual who:
 - a. is asleep or is mentally or physically incapacitated either through the effect of drugs or alcohol or for any other reason, or
 - b. is under duress, threat, coercion or force; or
2. Inferred under circumstances in which consent is not clear including, but not limited to:
 - a. the absence of an individual saying "no" or "stop", or
 - b. the existence of a prior or current relationship or sexual activity.

21 Okla. Stat. § 113 (effective June 6, 2016).

DATING VIOLENCE is not defined by the state of Oklahoma; however, violence against a person with whom the perpetrator is in a dating relationship is considered domestic violence, defined below. A *dating relationship* is defined as: an intimate association, primarily characterized by affectionate or sexual involvement. For purposes of this act, a casual acquaintance or ordinary fraternization between persons in a business or social context shall not constitute a dating relationship.

22 Okla. Stat. § 60.1.

DOMESTIC VIOLENCE is not defined in Oklahoma law. However, the criminal definition of domestic abuse is defined as: Any act of physical harm, or the threat of imminent physical harm which is committed by an adult, emancipated minor, or minor child thirteen (13) years of age or older against another adult, emancipated minor or minor child who is currently or was previously an intimate partner or family or household member. "Family or household members" means: (a) parents, including grandparents, stepparents, adoptive parents and foster parents, (b) children, including grandchildren, stepchildren, adopted children and foster children, and (c) persons otherwise related by blood or marriage living in the same household. "Intimate partner" means: (a) current or former spouses, (b) persons who are or were in a dating relationship, (c) persons who are the biological parents of the same child, regardless of their marital status or whether they have lived together at any time, and (d) persons who currently or formerly lived together in an intimate way, primarily characterized by affectionate or sexual involvement. A sexual relationship may be an indicator that a person is an intimate partner, but is never a necessary condition.

21 Okla. Stat. § 644.

SEXUAL ASSAULT

- A. Rape, or rape by instrumentation, as defined in Sections 1111, 1111.1 and 1114 of [Title 21], or
- B. Forcible sodomy, as defined in Section 888 of [Title 21].

21 Okla. Stat. § 142.20.

RAPE (AS USED IN THE DEFINITION FOR "SEXUAL ASSAULT")

- A. Rape is an act of sexual intercourse involving vaginal or anal penetration accomplished with a male or female who is not the spouse of the perpetrator and who may be of the same or the opposite sex as the perpetrator under any of the following circumstances:
 1. Where the victim is under sixteen (16) years of age;
 2. Where the victim is incapable through mental illness or any other unsoundness of mind, whether temporary or permanent, of giving legal consent;
 3. Where force or violence is used or threatened, accompanied by apparent power of execution to the victim or to another person;
 4. Where the victim is intoxicated by a narcotic or anesthetic agent, administered by or with the privity of the accused as a means of forcing the victim to submit;
 5. Where the victim is at the time unconscious of the nature of the act and this fact is known to the accused;
 6. Where the victim submits to sexual intercourse under the belief that the person committing the act is a spouse, and this belief is induced by artifice, pretense, or concealment practiced by the accused or by the accused in collusion with the spouse with intent to induce that belief. In all cases of collusion between the accused and the spouse to accomplish such act, both the spouse and the accused, upon conviction, shall be deemed guilty of rape;
 7. Where the victim is under the legal custody or supervision of a state agency, a federal agency, a county, a municipality or a political subdivision and

engages in sexual intercourse with a state, federal, county, municipal or political subdivision employee or an employee of a contractor of the state, the federal government, a county, a municipality or a political subdivision that exercises authority over the victim; or the subcontractor or employee of a subcontractor of the state or federal government, a county, a municipality or a political subdivision that exercises authority over the victim;

- 8. Where the victim is at least sixteen (16) years of age and is less than twenty (20) years of age and is a student, or under the legal custody or supervision of any public or private elementary or secondary school, junior high or high school, or public vocational school, and engages in sexual intercourse with a person who is eighteen (18) years of age or older and is an employee of the same school system; or
- 9. Where the victim is nineteen (19) years of age or younger and is in the legal custody of a state agency, federal agency or tribal court and engages in sexual intercourse with a foster parent or foster parent applicant.
- B. Rape is an act of sexual intercourse accomplished with a male or female who is the spouse of the perpetrator if force or violence is used or threatened, accompanied by apparent power of execution to the victim or to another person.

21 Okla. Stat. § 1111

RAPE BY INSTRUMENTATION (AS USED IN THE DEFINITION FOR "SEXUAL ASSAULT")

Rape by instrumentation is an act within or without the bonds of matrimony in which any inanimate object or any part of the human body, not amounting to sexual intercourse is used in the carnal knowledge of another person without his or her consent and penetration of the anus or vagina occurs to that person. Provided, further, that at least one of the circumstances

specified in Section 1111 of this title has been met; further, where the victim is at least sixteen (16) years of age and is less than twenty (20) years of age and is a student, or under the legal custody or supervision of any public or private elementary or secondary school, junior high or high school, or public vocational school, and engages in conduct prohibited by this section of law with a person who is eighteen (18) years of age or older and is an employee of the same school system, or where the victim is under the legal custody or supervision of a state or federal agency, county, municipal or a political subdivision and engages in conduct prohibited by this section of law with a federal, state, county, municipal or political subdivision employee or an employee of a contractor of the state, the federal government, a county, a municipality or a political subdivision that exercises authority over the victim, consent shall not be an element of the crime. Provided, further, that at least one of the circumstances described in Section 1111 of this title has been met; further, where the victim is nineteen (19) years of age or younger and in the legal custody of a state agency, federal agency or tribal court and engages in conduct prohibited by this section of law with a foster parent or foster parent applicant. Except for persons sentenced to life or life without parole, any person sentenced to imprisonment for two (2) years or more for a violation of this section shall be required to serve a term of post-imprisonment supervision pursuant to subparagraph f of paragraph 1 of subsection A of Section 991a of Title 22 of the Oklahoma Statutes under conditions determined by the Department of Corrections. The jury shall be advised that the mandatory post-imprisonment supervision shall be in addition to the actual imprisonment.

21 Okla. Stat. § 1111.1.

FORCIBLE SODOMY (AS USED IN THE DEFINITION FOR “SEXUAL ASSAULT”)

- A. Any person who forces another person to engage in sodomy, pursuant to Section 886 of Title 21 Oklahoma Statutes, upon conviction, is guilty of a felony punishable by imprisonment in the custody of the Department of

Corrections for a period of not more than twenty (20) years. Except for persons sentenced to life or life without parole, any person sentenced to imprisonment for two (2) years or more for a violation of this subsection shall be required to serve a term of post-imprisonment supervision pursuant to subparagraph f of paragraph 1 of subsection A of Section 991a of Title 22 of the Oklahoma Statutes under conditions determined by the Department of Corrections. The jury shall be advised that the mandatory post-imprisonment supervision shall be in addition to the actual imprisonment. Any person convicted of a second violation of this section, where the victim of the second offense is a person under sixteen (16) years of age, shall not be eligible for probation, suspended or deferred sentence. Any person convicted of a third or subsequent violation of this section, where the victim of the third or subsequent offense is a person under sixteen (16) years of age, shall be punished by imprisonment in the custody of the Department of Corrections for a term of life or life without parole, in the discretion of the jury, or in case the jury fails or refuses to fix punishment then the same shall be pronounced by the court. Any person convicted of a violation of this subsection after having been twice convicted of a violation of subsection A of Section 1114 of this title, a violation of Section 1123 of this title or sexual abuse of a child pursuant to Section 843.5 of this title, or of any attempt to commit any of these offenses or any combination of the offenses, shall be punished by imprisonment in the custody of the Department of Corrections for a term of life or life without parole.

B. The crime of forcible sodomy shall include:

1. Sodomy committed by a person over eighteen (18) years of age upon a person under sixteen (16) years of age;
2. Sodomy committed upon a person incapable through mental illness or any unsoundness of mind of giving legal consent regardless of the age of the person committing the crime;

3. Sodomy accomplished with any person by means of force, violence, or threats of force or violence accompanied by apparent power of execution regardless of the age of the victim or the person committing the crime;
4. Sodomy committed by a state, county, municipal or political subdivision employee or a contractor or an employee of a contractor of the state, a county, a municipality or political subdivision of this state upon a person who is under the legal custody, supervision or authority of a state agency, a county, a municipality or a political subdivision of this state; or the subcontractor or employee of a subcontractor of the contractor of the state or federal government, a county, a municipality or a political subdivision of this state;
5. Sodomy committed upon a person who is at least sixteen (16) years of age but less than twenty (20) years of age and is a student of any public or private secondary school, junior high or high school, or public vocational school, with a person who is eighteen (18) years of age or older and is employed by the same school system;
6. Sodomy committed upon a person who is at the time unconscious of the nature of the act, and this fact should be known to the accused; or
7. Sodomy committed upon a person where the person is intoxicated by a narcotic or anesthetic agent administered by or with the privity of the accused as a means of forcing the person to submit.
8. Sodomy committed upon a person who is at least sixteen (16) years of age but less than eighteen (18) years of age by a person responsible for the child's health, safety or welfare. "Person responsible for a child's health, safety or welfare" shall include, but not be limited to: (a) a parent, (b) a legal guardian, (c) a custodian, (d) a foster parent, (e) a person eighteen (18) years of age or older with whom the child's parent cohabitates, (f) any other adult residing in the hold of

the child, (g) an agent or employee of a public or private residential home, institution, facility or day treatment program as defined in Section 175.2 of Title 10 of the Oklahoma Statutes, or (h) an owner, operator or employee of a child care facility, as defined by Section 402 of Title 10 of the Oklahoma Statutes.

21 Okla. Stat. § 888 (effective June 6, 2016).

STALKING

Any person who willfully, maliciously, and repeatedly follows or harasses another person in a manner that:

1. Would cause a reasonable person or a member of the immediate family of that person as defined in subsection F of this section to feel frightened, intimidated, threatened, harassed, or molested; and
2. Actually causes the person being followed or harassed to feel terrorized, frightened, intimidated, threatened, harassed, or molested, shall, upon conviction, be guilty of the crime of stalking, which is a misdemeanor punishable by imprisonment in a county jail for not more than one (1) year or by a fine of not more than One Thousand Dollars (\$1,000.00), or by both such fine and imprisonment
3. For purposes of this section:
 1. “Harasses” means a pattern or course of conduct directed toward another individual that includes, but is not limited to, repeated or continuing unwanted contact, that would cause a reasonable person to suffer emotional distress, and that actually causes emotional distress to the victim. Harassment shall include harassing or obscene phone calls as prohibited by Section 1172 of this title and conduct prohibited by Section 850 of this title. Harassment does not include constitutionally protected activity or conduct that serves a legitimate purpose;
 2. “Course of conduct” means a pattern of conduct composed of a series of two or more separate acts over a period of time, however short, evidencing a continuity

of purpose. Constitutionally protected activity is not included within the meaning of “course of conduct”;

3. “Emotional distress” means significant mental suffering or distress that may, but does not necessarily require, medical or other professional treatment or counseling;
4. “Unconsented contact” means any contact with another individual that is initiated or continued without the consent of the individual, or in disregard of that individual’s expressed desire that the contact be avoided or discontinued. Constitutionally protected activity is not included within the meaning of unconsented contact. Unconsented contact includes but is not limited to any of the following:
 - Following or appearing within the sight of that individual,
 - Approaching or confronting that individual in a public place or on private property,
 - Appearing at the workplace or residence of that individual,
 - Entering onto or remaining on property owned, leased, or occupied by that individual,
 - Contacting that individual by telephone,
 - Sending mail or electronic communications to that individual, and
 - Placing an objection, or delivering an object to, property owned, leased, or occupied by that individual.
5. “Member of the immediate family”, for the purposes of this section, means any spouse, parent, child, person related within the third degree of consanguinity or affinity or any other person who regularly resides in the household or who regularly resided in the household within the prior six (6) months.
6. “Following” shall include the tracking of the movement or location of an individual through the use of a Global Positioning System (GPS) device or other monitoring device by a person, or person who acts on behalf of

another, without the consent of the individual whose movement or location is being tracked; provided, this shall not apply to the lawful use of a GPS device or other monitoring device or to the use by a new or used motor vehicle dealer or other motor vehicle creditor of a GPS device or other monitoring technology, including a device containing technology used to remotely disable the ignition of a motor vehicle, in connection with lawful action after default of the terms of a motor vehicle credit sale, loan or lease, and with the express written consent of the owner or lessee of the motor vehicle.

21 Okla. Stat. § 1173.

PREVENTIVE MEASURES: PROGRAMS TO PREVENT DOMESTIC VIOLENCE, DATING VIOLENCE, SEXUAL ASSAULT AND STALKING

The university engages in comprehensive, intentional and integrated programming, initiatives, strategies and campaigns intended to end dating violence, domestic violence, sexual assault and stalking that:

1. Are culturally relevant, inclusive of diverse communities and identities, sustainable, responsive to community needs and informed by research, or assessed for value, effectiveness or outcome; and
2. Consider environmental risk and protective factors as they occur on the individual, relationship, institutional, community and societal levels.

Educational programming consists of primary prevention and awareness programs for all incoming students and new employees and ongoing awareness and prevention campaigns for students and that include:

1. A statement that the institution prohibits the crimes of domestic violence, dating violence, sexual assault and stalking (as defined by the Clery Act);
2. The definitions of domestic violence, dating violence, sexual assault and stalking according to any applicable jurisdictional definitions of these terms;
3. What behavior and actions constitute consent, in reference to sexual activity, in the State of Oklahoma;
4. The institution's definition of consent and the purposes for which that definition is used.
5. A description of safe and positive options for bystander intervention. Bystander intervention means safe and positive options that may be carried out by an individual or individuals to prevent harm or intervene when there is a risk of dating violence, domestic violence, sexual assault or stalking. Bystander intervention includes recognizing situations of potential harm, understanding institutional structures and cultural conditions that facilitate violence, overcoming barriers to intervening, identifying safe and effective intervention options, and taking action to intervene;
6. Information on risk reduction. Risk reduction means options designed to decrease perpetration and bystander inaction, and to increase empowerment for victims in order to promote safety and to help individuals and communities address conditions that facilitate violence.
7. Information regarding:
 - a. procedures victims should follow if a crime of domestic violence, dating violence, sexual assault and stalking occurs;
 - b. how the institution will protect the confidentiality of victims and other necessary parties;

- c. existing counseling, health, mental health, victim advocacy, legal assistance, visa and immigration assistance, student financial aid and other services available for victims, both within the institution and in the community; and
- d. options for, available assistance in, and how to request changes to academic, living, transportation, and working situations or protective measures;
- e. procedures for institutional disciplinary action in cases of alleged dating violence, domestic violence, sexual assault or stalking.

Oklahoma State University takes acts of sexual violence extremely seriously and believes that 1 victim is 2 many. The university invites all members of the campus community to be part of the effort to maintain a safe and productive environment in which to live, learn and be successful by committing to end sexual violence and sexual harassment. It is important for members of our community to understand and receive consent, intervene by being an active bystander when necessary and support victims of sexual violence.

The 1 is 2 Many program at Oklahoma State University aims to reduce the incidents of sexual violence through on- and off-campus collaborations, student leadership initiatives, social norming campaigns and prevention education opportunities that raise awareness by promoting effective consent, teaching intervention techniques, reframing the campus culture, and supporting victims.

1 is 2 Many is a part of Campus Life and is overseen by one full-time employee, the coordinator.

PRIMARY PREVENTION AND AWARENESS PROGRAMMING FOR ALL INCOMING STUDENTS AND EMPLOYEES

Oklahoma State University prohibits acts of sexual violence such as dating violence, domestic violence, sexual assault and stalking. To educate students and comply with the Violence

Against Women Act, Office for Civil Rights federal guidelines and the Clery Act, all new students are required to complete online training on sexual violence prevention. A hold will be placed on each new student's account, which will affect enrollment for the subsequent semester, until the training has been completed. Training should take around 60 minutes.

To complete the training, follow these steps:

1. Go to 1is2many.okstate.edu/student-training.html
2. Login with your Okey account information

All new employees are also required to complete a sexual violence prevention training provided by Title IX and the Office of Equal Opportunity. To complete the training, please visit hr.okstate.edu/equal-opportunity/title-ix.html.

Additionally, 1 is 2 Many provides education on sexual violence prevention to any group of students, faculty or staff upon request. Topics include, but are not limited to, sexual assault, sexual harassment, the conduct process for sexual misconduct, how to support a victim, bystander intervention, prevention strategies, and resources available for victims.

Specifically, the University offered the following primary prevention and awareness programs for all incoming students in 2023:

SEX-PLORATION — DOV/DAV/SA

February 2023, Student Union

CONDOM BINGO — DOV/DAV/SA

February 2023, Student Union

SPRING BREAK PREVENTION PRE-PARTY — SA

March 2023, Student Union

DIGITAL STORYTELLING — DOV/DAV/SA

March 2023, Willard Hall

SEXUAL ASSAULT AWARENESS MONTH — SA

April 2023, Student Union

DENIM DAY — SA

April 2023, Student Union

ROCK THE BLOCK TIE-DYE — SA

August 2023, Colvin Recreation Center

MOCKTAIL-GATE — SA

September 2023, McKnight Center Lawn

SEX IN COLLEGE PANEL — DOV/DAV/SA

September 2023, Willard Hall

*DoV = Domestic Violence, DaV = Dating Violence,

SA = Sexual Assault, S = Stalking

The University offered the following primary prevention and awareness programs for all new employees in 2023:

TITLE VII & IX TRAINING — DoV/DaV/SA/S

1/10/23, 417 Student Union

2/7/23, 417 Student Union

3/7/23, 417 Student Union

3/21/23, Live Virtual Event

4/4/23, 417 Student Union

5/2/23, 417 Student Union

5/16/23, Live Virtual Event

6/6/23, Live Virtual Event

7/18/23, 413 Student Union

9/5/23, 413 Student Union

9/14/23, Live Virtual Event

10/3/23, 413 Student Union

11/7/23, 413 Student Union

12/5/23, 413 Student Union

12/14/23, Live Virtual Event

As part of these efforts, Oklahoma State University provides ongoing prevention and awareness campaigns for all students and employees. These programs are comprehensive, intentional, and integrated programs, initiatives, strategies, and campaigns intended to end dating violence, domestic violence, sexual assault, and stalking. Oklahoma State University considers our own unique campus when designing these programs, to ensure they are:

- Culturally relevant
- Inclusive of diverse communities and identities
- Sustainable, so the programs can continue to benefit our campus community
- Responsive to community needs; and
- Informed by research or assessed for value, effectiveness or outcome, so we know they're working and ultimately benefiting the community.

Each year, 1 is 2 Many finds ways to get students and community members involved with prevention initiatives. 1 is 2 Many invites student leaders to get involved as Prevention Ambassadors. This student group contributes to positive culture change by educating their peers about consent, rape culture, bystander intervention, support services, etc. The student group meets monthly to discuss sexual violence trends and work towards creating a culture of consent and care on campus. Prevention Ambassadors assist in creating and implementing programming that is culturally relevant and campus specific. Members volunteer at 1 is 2 Many events, assist with marketing, and plan and lead tabling efforts.

Each year, 1 is 2 Many offers several main events that are available to the campus community, including;

CONDOM BINGO

1 is 2 Many and Student Union Activities Board partner to host Condom Bingo, an event intended to promote safe and consensual sexual activity. During this event, students play bingo games and trivia games focused on resources, consent, bystander intervention, and sex education. In addition, a wide selection of condom and other safe sex supplies are provided to accommodate a variety of needs.

DENIM DAY

Students, employees, and community members are encouraged to wear their jeans all day and to spread the message that it doesn't matter what a person is wearing, how they act, or what they do; consent is never implied. 1 is 2 Many partners with Wings of Hope to join forces with community agencies in the support for survivors.

TABLING

Each month 1 is 2 Many engages with the student body by hosting a tabling event, where students can stop by, learn about the specific topic being discussed that day and receive resource products. Some topics from 2023 include: support resources, healthy relationships, consent, and New Student Online Training.

ADDITIONAL PREVENTION EFFORTS

Learn more about sexual violence prevention efforts at OSU at

1is2many.okstate.edu/.

Schedule a prevention education presentation at

1is2many.okstate.edu/get-involved/events/.

BYSTANDER INTERVENTION

Be an intervener! Stop these incidents before they occur and talk to your friends about it so that they will intervene as well. Our goal is to change the culture on the OSU campus by creating a community of leaders and active bystanders.

The Bystander Effect predicts that people are less likely to help others when there are more people around a potentially dangerous situation. Below is the thought process someone needs to have before making a conscious decision to intervene.

In order to intervene, someone has to:

1. **NOTICE THE INCIDENT** — Bystanders first must notice the incident taking place. It is important to become attuned to what situations may be risky (e.g. if you're at a party, and you see someone stumbling as they're being led into a different room, this is a risky situation).
2. **INTERPRET THE INCIDENT AS AN EMERGENCY** — By "emergency," we mean a situation wherein there is risk of sexual or physical violence occurring soon.
3. **ASSUME RESPONSIBILITY FOR INTERVENING** — It has been found that often, people believe that someone else will help in a situation where there are many people around.

However, it is important to realize that others may also be thinking the same thing. If you're unsure if you should do something, ask a friend what they think — it might be that they've been thinking the same thing.

4. **HAVE THE BYSTANDER INTERVENTION SKILLS TO HELP** — There are several different techniques that someone can use to intervene in a risky situation.

When attempting to help, you should also think about the 4 D's of intervention:

DISTRACT — Find a way to distract the participants from what is happening. This could look like changing the subject, mentioning another activity like getting food, or others actions.

DELEGATE — If you are not comfortable intervening, find someone who is. You might call law enforcement or other friends, talk to the bartender, or talk to others around.

DELAY — If you are not sure you should intervene, try to delay the situation until you can get more information. This might look like going to the bathroom with a potential victim, turning on a TV, or other behaviors.

DIRECT — If you feel comfortable, the best way might be to directly intervene and ask those involved what is going on.

RISK REDUCTION

When students come to college, they accept new responsibilities, including taking appropriate measures to ensure their own personal safety. In combination with OSU's efforts to maintain a safe living and learning environment, the university encourages students to follow these safety tips to protect themselves.

Sometimes, especially in cases of sexual or domestic violence, safety tips can border on blaming the victim for not taking these steps to prevent their victimization. OSU wants to be very clear that victims are in NO way at fault for anything that happened to them, regardless of the circumstances. So, these safety tips are a great resource but should never be reason for placing blame on victims.

AT HOME, IN YOUR APARTMENT, OR IN A RESIDENTIAL HALL:

- Never prop open inside or outside doors.
- Never let unauthorized persons come into your room, enter residence halls, or enter apartment security doors. Always ask to see proper identification.
- Never hide your keys outside your apartment or room. Do not put your name or address on your key rings and do not loan your keys to anyone.
- Always keep your doors locked when you are napping/sleeping or not in your room.
- Close blinds or curtains after dark and never dress in front of a window.
- If you are awakened by an intruder inside your room, do not attempt to apprehend the intruder. Try to get an accurate description of the intruder and then call the police.
- Adequately protect all valuables in your room, such as wallets, jewelry, credit cards, cash and computers. Do not leave valuables in plain view.
- Take all valuable items home with you during vacations.
- When in a public place, keep valuable possessions out of sight. If you must leave an area for any length of time, take personal items with you.
- Avoid working or studying alone in a campus building.
- Any suspicious activity should be reported to the OSU Police immediately.

WHEN DRIVING:

- Secure your vehicle. Lock your doors and keep windows rolled up whenever possible.
- Carry your car keys when approaching your vehicle so you can enter quickly.
- Always check underneath your car upon approach and in the rear seat for intruders before entering your vehicle.
- Drive on well-traveled and well-lit streets.

- Leave enough room between your car and the one ahead so you can drive around it if necessary.
- Limit distractions such as cell phones.
- Never hitchhike, and never pick up hitchhikers.
- If someone tries to enter your stopped vehicle, sound the horn and drive to a safe area such as a convenience store.
- If your vehicle breaks down, ask any person who offers to help to call the police. Do not allow any person access to you or inside your car. Roll down your window no more than an inch. Be aware that an accident may be staged to provide the driver who hits you an opportunity to commit a criminal act.
- Call ahead when driving to your home or apartment late at night and have someone watch you walk from your car to the residence.

WHILE WALKING OR JOGGING:

- Avoid walking or jogging alone, and try not to walk or jog after dark.
- Avoid dark or vacant areas. Walk along well-lit routes.
- Be alert to your surroundings. If you suspect you are being followed: Run in a different direction, go to the other side of the street and yell for help, or move quickly to a lit area, a group of people, or a blue light emergency phone.
- Avoid wearing headphones when walking or jogging. Always be aware of your surroundings and practice risk avoidance techniques.
- Have your keys ready when returning to your residence hall or apartment. Keep your personal or valuable items concealed and close to your body.

SOCIALLY:

- Do not give out your personal information including phone number, email address, social media username, etc. to individuals you have not developed a level of trust with.
- Do not put your daily schedule, phone number, or address online.

- If you perceive communication from another individual to be inappropriate, it makes you uncomfortable, or is threatening do not respond.
- Make sure you trust any online website with which you choose to share your personal information (especially financial information like credit cards).
- Before going to a party where alcohol will be present, make a plan, know your limits, and appoint a sober driver. Stay and leave with the friends you came with.
- Make your own drink and keep your drink in your hands at all times.
- If someone is pressuring you into drinking, remove yourself from the situation.

SEX OFFENDER REGISTRATION

In accordance with applicable state and federal laws, information about registered sex offenders who may be attending or working at OSU is available to the campus community at sors.doc.state.ok.us/svor/f?p=119:1. An additional link is provided to the Stillwater Police Department's list of registered sex offenders residing in the Stillwater area.

The Stillwater Police Department's website is stillwater.org/page/home/government/departments-divisions/police-department.



STATISTICS

REPORT OF STATISTICS

Oklahoma State University has been reporting its crime statistics to the Federal Bureau of Investigation (FBI) according to its Uniform Crime Reporting guidelines since 1971. The statistics are published annually in the “Crime in the United States” publication from the U.S. Department of Justice. The tables located on page 17 and 18, (Campus Crime Report) comply with Title II of the Federal Campus Crime Awareness and Campus Security Act of 1990 and 1998, and subsequent revisions.

Campus crime, arrest and referral statistics include those reported to the OSU Police, designated campus security authorities and local law enforcement agencies. When a campus security authority becomes aware of a crime, they are required to complete a report that does not contain any personally identifying information about the students or persons involved. The report is then submitted to OSU Police, who are responsible for compiling and preparing the statistics.

CAMPUS CRIME STATISTICS

The crime and arrest statistics reported are those that occurred within the jurisdictional boundaries of campus.

They do not include off-campus private housing, which is within the Stillwater Police Department jurisdiction. OSU, however, reports crime and arrest statistics for fraternities and sororities, although they are within the jurisdictional boundaries of the City of Stillwater. Crimes occurring on public property immediately adjacent to the campus are also reported when available. Crime statistics concerning other locations are available at the Stillwater Police Department.

CRIMES DISCLOSED TO PASTORAL OR MENTAL HEALTH COUNSELOR

To be exempt from disclosing reported offenses, pastoral or professional counselors must be acting in their roles of pastoral or professional counselors. This exemption does not relieve counselors of the duty to exercise reasonable care to protect a foreseeable victim from danger posed by the person being counseled or to make reports mandated by law. When speaking to a victim or witness to a crime, counselors are encouraged to inform the individual of options to report the crime to the police.

A pastoral counselor is a person who is associated with a religious order or denomination, is recognized by that religious order or denomination as someone who provides confidential counseling and is functioning within the scope of that recognition as a pastoral counselor.

A mental health counselor is a person whose official responsibilities include providing mental health counseling to members of the institution’s community and who is functioning within the scope of his or her license or certification. This definition applies even to professional counselors who are not employees of the institution but are under contract to provide counseling at the institution.

The university does not encourage pastoral and professional counselors to notify individuals they are counseling of the option to report crimes on an anonymous or confidential basis for inclusion in the annual statistical disclosure of crime statistics.

DEFINITIONS OF CRIMINAL OFFENSES

The following definitions are those used in the Uniform Crime Reporting System of the United States Department of Justice, Federal Bureau of Investigation:

AGGRAVATED ASSAULT

An unlawful attack of one person by another for the purpose of inflicting severe or aggravated bodily injury. This type of assault usually is accompanied by the use of a weapon or means likely to produce death or great bodily harm. It is not necessary that injury result from an aggravated assault when a gun, knife or other weapon is used that could and probably would result in serious personal injury if the crime were successfully completed.

ARSON

Any willful or malicious attempt to burn, with or without intent to defraud, a dwelling house, public building, motor vehicle, or aircraft or personal property of another. Only fires determined through investigation to have been willfully or maliciously set are classified as arson.

BURGLARY

The unlawful entry of a structure to commit a felony or theft. For reporting purposes, this definition includes: unlawful entry with the intent to commit a larceny or felony; breaking and entering with the intent to commit a larceny; housebreaking; safecracking; and all attempts to commit any of the aforementioned.

DATING VIOLENCE

Dating violence is committed by a person who is or has been in a social relationship of a romantic or intimate nature with another person. The existence of such relationship shall be determined based on the reporting party’s statement and with consideration of the length of the relationship, the type of relationship, and the frequency of interaction between the persons involved in the relationship. Dating violence includes but is not limited to sexual or physical abuse or the threat of such abuse. Dating violence does not include acts that meet the definition of domestic violence.

DOMESTIC VIOLENCE

Domestic violence is a felony or misdemeanor crime of violence committed by a:

- current or former spouse or intimate partner of the victim
- person with whom the victim shares a child in common
- person who is cohabitating with or has cohabited with the victim as a spouse or intimate partner
- person similarly situated to a spouse of the victim under the domestic or family violence laws of Oklahoma or
- any other person against an adult or youth victim who is protected from that person's acts under the domestic or family violence laws of Oklahoma

Domestic violence is a pattern of abusive behavior in any relationship that is used by one partner to gain or maintain power and control over another intimate partner. Domestic violence can be physical, sexual, emotional, economic or psychological actions or threats of actions that influence another person.

DRUG LAW VIOLATIONS

Violations of state and local laws relating to the unlawful possession, sale, use, growing, manufacturing and making of narcotic drugs. The relevant substances include: opium or cocaine and their derivatives (morphine, heroin, codeine); marijuana; synthetic narcotics (Demerol, Methadone); and dangerous non-narcotic drugs (barbiturates, Benzedrine).

HATE CRIMES

A crime reported to local police agencies or to a campus security authority that manifests evidence that the victim was intentionally selected because of the perpetrator's bias against the victim. For the purposes of this definition, the categories of bias include the victim's actual or perceived race, religion, gender, gender identity, sexual orientation, ethnicity, national origin and disability.

LARCENY

The unlawful taking, carrying, leading or riding away of property from the possession or constructive possession of another without use of force or violence. It includes shoplifting, pocket-picking, purse snatching, thefts from motor vehicles to include parts and accessories, bicycles and computer thefts.

LIQUOR LAW VIOLATIONS

The violation of laws or ordinances prohibiting: the manufacture, sale, transporting, furnishing, possessing of intoxicating liquor; maintaining unlawful drinking places; bootlegging; operating a still; furnishing liquor to a minor or intemperate person; using a vehicle for illegal transportation of liquor; drinking on a train or public conveyance; and all attempts to commit any of the aforementioned. Drunkenness and driving under the influence are not included in this definition.

MANSLAUGHTER BY NEGLIGENCE

The killing of another person through gross negligence.

MOTOR VEHICLE THEFT

The theft or attempted theft of a motor vehicle by someone other than the registered owner.

MURDER AND NON-NEGLIGENT MANSLAUGHTER

The willful (non-negligent) killing of one human being by another.

ROBBERY

The taking or attempting to take anything of value from the care, custody or control of a person or persons by force or threat of force or violence and/or by putting the victim in fear.

SEX OFFENSES

Any sexual act directed against another person without the consent of the victim, including instances where the victim is incapable of giving consent.

SEXUAL ASSAULT

An offense that meets the definition of rape, fondling, incest or statutory rape, defined as follows:

- **RAPE** means the penetration, no matter how slight, of the vagina or anus with any body part or object, or oral penetration by a sex organ of another person, without the consent of the victim.
- **FONDLING** means the touching of the private body parts of another person for the purpose of sexual gratification, without the consent of the victim, including instances where the victim is incapable of giving consent because of his/her age or because of his/her temporary or permanent mental incapacity.
- **INCEST** means non-forcible sexual intercourse between persons who are related to each other within the degrees wherein marriage is prohibited by law.
- **STATUTORY RAPE** means non-forcible sexual intercourse with a person who is under the statutory age of consent (age 16).

STALKING

Stalking refers to one who engages in a course of conduct directed at a specific person that would cause a reasonable person to fear for his or her safety or the safety of others or suffer substantial emotional distress.

- **COURSE OF CONDUCT** means two or more acts, including, but not limited to, acts in which the stalker directly, indirectly, or through third parties, by any action, method, device or means, follows, monitors, observes, surveils, threatens or communicates to or about a person or interferes with a person's property.

- **REASONABLE PERSON** means a reasonable person under similar circumstances and with similar identities to the victim.
- **SUBSTANTIAL EMOTIONAL DISTRESS** means significant mental suffering or anguish that may, but does not necessarily, require medical or other professional treatment or counseling.

WEAPON LAW VIOLATIONS

The violation of laws or ordinances dealing with weapon offenses, regulatory in nature, such as: manufacture, sale, or possession of deadly weapons; carrying deadly weapons, concealed or openly; furnishing deadly weapons to minors; alien possessing deadly weapons; and all attempts to commit any of the aforementioned. OSU policy prohibits deadly weapons on the university campus with limited exceptions.

Firearms may legally be stored/kept in a vehicle on campus. However, OSU and the OSU Police Department would like to strongly dissuade anyone from doing so, due to the chances of theft from the vehicle. Campus residents may store their firearms at the OSU Police Department free of charge, as space is available. Please call 405-744-6523 for details.

DEFINITION OF TERMS FOR STATISTICAL CHARTS

“ON-CAMPUS” means any building or property owned or controlled by Oklahoma State University, within the same reasonably contiguous geographic area of the institution and used by the institution in direct support of, or in a manner related to, the institution’s educational purposes, including residence halls. It also includes property within the same reasonably contiguous geographic area of the institution that is owned by the institution but controlled by another person, is

used by students, and supports institution purposes (such as food or other retail vendor). The Department of Education has clarified “reasonably contiguous geographic area” to generally mean within one mile of the campus border.

“RESIDENTIAL” includes those buildings designated as residence halls and university apartments where students are housed. It also includes housing for officially and not officially recognized student groups, including fraternity or sorority houses, that are owned or controlled by Oklahoma State University or are located on property that OSU owns or controls. The reasonably contiguous geographic area also applies for these building types.

“NON-CAMPUS BUILDING OR PROPERTY” includes buildings or property owned or controlled by a student organization, such as a fraternity or sorority, recognized by the institution, and any building or property (other than a branch campus) owned or controlled by an institution that is used in direct support of, or in relation to, the institution’s educational purposes, is used by students and is not within the same reasonably contiguous geographical area of the institution. This includes Lake Carl Blackwell and research land west of the main campus.

“PUBLIC PROPERTY” is defined as all public property that is within the same reasonably contiguous geographic area of the institution, such as a sidewalk, a street or other thoroughfare, or parking facility, and is adjacent to a facility owned or controlled by the institution, if the facility is used by the institution in direct support of, or in a manner related to the institution’s educational purposes. For the purposes of the Clery Act, Oklahoma State University defines roadways that pass through or are adjacent to campus and maintained by the municipality of Stillwater as public property.





CRIME STATISTICS CHARTS

CRIMES REPORTED BY OSU POLICE DEPARTMENT, CAMPUS SECURITY AUTHORITIES, AND OTHER LAW ENFORCEMENT AGENCIES — 2021–2023

This chart includes offenses that were reported to the Oklahoma State University Police Department, Campus Security Authorities, and Local Law Enforcement Agencies in accordance with the Uniform Crime Reporting procedures and the Jeanne Clery Disclosure of Campus Security Policy and Campus Crime Statistics Act.

OFFENSE TYPE (INCLUDES ATTEMPTS)	YEAR	ON CAMPUS	NON-CAMPUS	PUBLIC PROPERTY	TOTAL	RESIDENTIAL FACILITIES ¹
MURDER/NON-NEGLIGENT MANSLAUGHTER	2023	0	0	0	0	0
	2022	0	0	0	0	0
	2021	0	0	0	0	0
MANSLAUGHTER BY NEGLIGENCE	2023	0	0	0	0	0
	2022	0	0	0	0	0
	2021	0	0	0	0	0
SEX OFFENSES						
RAPE	2023	11	1	0	12	11
	2022	16	1	1	18	16
	2021	14	1	0	15	14
FONDLING	2023	4	0	0	4	4
	2022	12	0	0	12	8
	2021	4	0	0	4	3
INCEST	2023	0	0	0	0	0
	2022	0	0	0	0	0
	2021	0	0	0	0	0
STATUTORY RAPE	2023	0	0	0	0	0
	2022	0	0	0	0	0
	2021	0	0	0	0	0
ROBBERY	2023	0	0	0	0	0
	2022	0	0	0	0	0
	2021	0	1	0	1	0
AGGRAVATED ASSAULT	2023	5	0	0	5	2
	2022	0	0	0	0	0
	2021	2	0	0	2	2
BURGLARY	2023	18	1	0	19	6
	2022	16	0	0	16	11
	2021	10	4	0	14	4

¹ Campus residential facilities are a subset of the “On Campus” category. Statistical data included in this column is also included in the “On Campus” column

CRIMES REPORTED BY OSU POLICE DEPARTMENT, CAMPUS SECURITY AUTHORITIES, AND OTHER LAW ENFORCEMENT AGENCIES — 2021–2023

This chart includes offenses that were reported to the Oklahoma State University Police Department, Campus Security Authorities, and Local Law Enforcement Agencies in accordance with the Uniform Crime Reporting procedures and the Jeanne Clery Disclosure of Campus Security Policy and Campus Crime Statistics Act.

MOTOR VEHICLE THEFT	2023	1	0	0	1	0
	2022	0	1	0	1	0
	2021	4	1	0	5	0
ARSON	2023	0	0	0	0	0
	2022	0	0	0	0	0
	2021	0	0	0	0	0
DATING VIOLENCE	2023	3	0	0	3	3
	2022	7	0	0	7	4
	2021	2	0	0	2	2
DOMESTIC VIOLENCE		3	0	0	3	3
	2022	3	0	0	3	2
	2021	3	3	0	6	2
STALKING	2023	11	0	0	11	4
	2022	16	0	0	16	7
	2021	11	1	0	12	2
LIQUOR LAW ARRESTS	2023	18	5	3	26	0
	2022	17	0	1	18	0
	2021	15	1	4	20	1
DRUG LAW ARRESTS	2023	9	0	2	11	1
	2022	4	1	1	6	1
	2021	12	1	10	23	5
WEAPONS LAW ARRESTS	2023	4	0	0	4	0
	2022	5	0	0	5	0
	2021	2	0	0	2	0
LIQUOR LAW VIOLATIONS REFERRED FOR DISCIPLINARY ACTION	2023	221	0	0	221	188
	2022	251	1	0	252	199
	2021	338	0	2	340	338
DRUG LAW VIOLATIONS REFERRED FOR DISCIPLINARY ACTION	2023	32	0	0	32	31
	2022	14	0	0	14	14
	2021	30	0	0	30	30

CRIMES REPORTED BY OSU POLICE DEPARTMENT, CAMPUS SECURITY AUTHORITIES, AND OTHER LAW ENFORCEMENT AGENCIES — 2021–2023

This chart includes offenses that were reported to the Oklahoma State University Police Department, Campus Security Authorities, and Local Law Enforcement Agencies in accordance with the Uniform Crime Reporting procedures and the Jeanne Clery Disclosure of Campus Security Policy and Campus Crime Statistics Act.

WEAPONS LAW VIOLATIONS REFERRED FOR DISCIPLINARY ACTION	2023	0	0	0	0	0
	2022	0	0	0	0	0
	2021	2	0	0	2	1

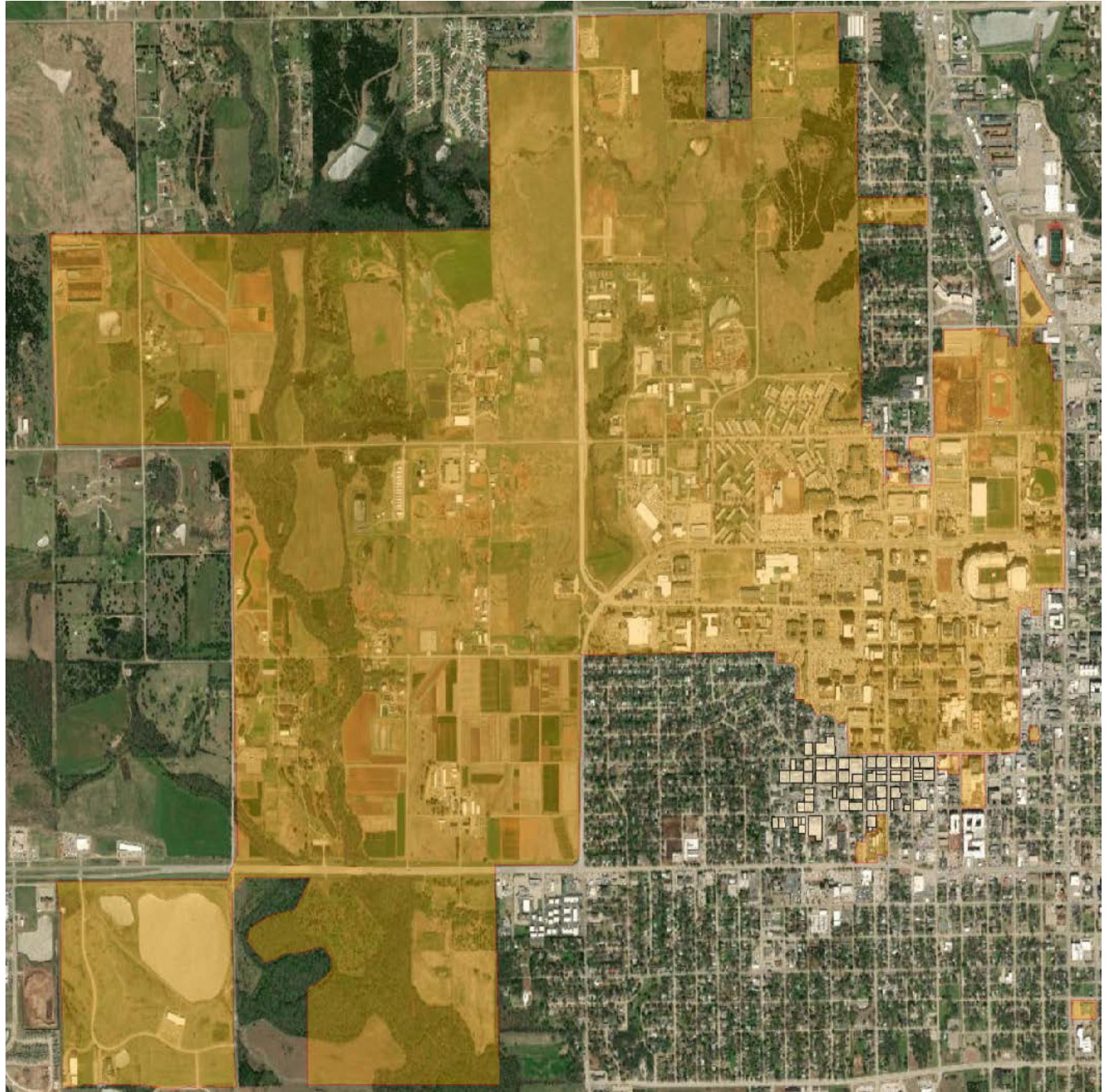
Hate Crimes — No hate crimes were determined to have occurred during the 2021-2023 reporting period.

Unfounded Crimes — If a reported crime is investigated by law enforcement authorities and found to be false or baseless, the crime is “unfounded”. Only sworn or commissioned law enforcement personnel may unfound a crime. Two cases in 2021 were determined to be unfounded. Three cases in 2022 were determined to be unfounded. Two cases in 2023 were determined to be unfounded.



2023 OSU "ON CAMPUS" BOUNDARIES AS DEFINED BY THE CLERY ACT

This map denotes the 2022 OSU Stillwater
"On Campus" boundaries as defined by
the Clery Act and includes **"ON CAMPUS
RESIDENTIAL"** within the shaded area.



Map courtesy of OSU Facilities Management Energy Services GIS



FIRE

safety.okstate.edu

ANNUAL FIRE SAFETY REPORT

Institutions are required to keep a fire log that states the nature of the fire, date, time and general location of each fire in on-campus student housing facilities. Oklahoma State University complies with this rule by including all fire-related incidents in the Annual Fire Safety Report and Fire Log maintained by Environmental Health and Safety. To view the fire log and related information, visit safety.okstate.edu/police/clery-act/activity-summaries.html.

The Annual Housing Fire Safety Report is required by the Higher Education Opportunity Act (HEOA) for any Title IV institution that maintains an on-campus student housing facility. Per HEOA, an institution that maintains an on-campus student housing facility must collect fire statistics, publish an Annual Fire Safety Report and keep a fire log.

The Clery Act was amended by HEOA in 2008, requiring future reports to begin including campus housing fire safety statistics as well.

STEPS TO FOLLOW IF YOU SEE A FIRE

1. 1. Activate the nearest fire alarm.
2. 2. Call 911. Give your name, address, location and the extent of the fire.
3. 3. Calmly alert people in the building, and evacuate the building by following **EXIT** signs.

STEPS TO FOLLOW IF YOU ARE CAUGHT IN A FIRE

1. Remain calm.
2. Before opening a door, feel it with the back of your hand. If it is **HOT**:
 - a. Do not open the door.
 - b. Open the windows. If possible, lower the top half of the window to let out heat and smoke and raise the lower half to let in fresh air.

- c. Seal crack around door with towels, linens or clothes. Soak these items in water if possible.
- d. To attract attention, hang objects out the window. Shout for help.
- e. Keep low to the floor. Take short breaths to avoid inhaling smoke. Place a wet towel over your nose and mouth. Keep your head six to eight inches off the floor.
3. If the door is **NOT HOT**, brace yourself against the door and open it slowly. If hot air or fire rushes in, close the door and do not open again.
4. If you can leave, close all doors behind you and proceed to the nearest safe exit. Leave the building and stand clear of the fire. Provide directions to police and fire personnel when they arrive.

STEPS TO FOLLOW FOR FIRE PREVENTION

1. Know every regular and emergency exit. Know how to activate the alarm system and what it sounds like. Know the location of fire extinguishers and how to operate them.
2. Arrange the contents of your room with fire safety in mind. Maintain clear and unobstructed access to your room door from both inside and outside.
3. Do not overload electrical outlets. Do not use broken, frayed or cracked electrical cords. Do not suspend lamps or lights by their own cords.
4. OSU is a tobacco- and vaping-free campus. You may not have a lit tobacco product or vape anywhere on campus.
5. Do not allow excess clutter of flammable materials. For further information, contact Environmental Health and Safety at 405-744-7241.

FIRE REPORTING

Per federal law, Oklahoma State University is required to annually disclose statistical data on all fires that occur in on-campus housing facilities. Listed below are the **NON-EMERGENCY** phone numbers to call to report fires that have **ALREADY** been extinguished in on-campus student housing.

These phone numbers are fires for which you are unsure whether the OSU Police may already be aware. If you find evidence of such a fire or if you hear about such a fire, please contact one of the following:

OSU POLICE — 405-744-6523 or the Rave Guardian campus safety app

ENVIRONMENTAL HEALTH AND SAFETY — 405-744-7241

OSU HOUSING AND RESIDENTIAL LIFE — 405-744-5592

When calling, provide as much information as possible about the location, date, time and cause of the fire. It is critical to document all reports of residential fires in the annual report.

FIRE SAFETY EDUCATION AND TRAINING PROGRAMS

Oklahoma State University strives to provide a safe and friendly environment for all of our campus community. To assist in this manner, several measures are taken. These include regular fire and life safety inspections in all campus facilities, various educational events are coordinated by the hall staff (i.e., Residential Community Educators, Community Mentors, etc.) that provide ongoing education and safety awareness, and the development of university rules and standard administrative procedures regarding fire safety.

The Environmental Health and Safety website provides safety information regarding fire safety and other live safety topics and is accessible to students, faculty and staff at ehs.okstate.edu/fire-and-life-safety/.

Environmental Health and Safety conducts annual laboratory, fume hood, safety shower and eyewash station inspections to ensure the safety of OSU laboratory employees. OSU has a large laboratory footprint with over 1,000 laboratories that study topics ranging from food processing to nanomaterials. However, all laboratories have similar requirements to ensure safety. These laboratory and life-safety requirements include:

1. Appropriate laboratory signage that provides employees, first responders and visitors information concerning the potential hazards within a laboratory. In addition, the locations of laboratory safety equipment must be well marked and easily found.
2. Employee access to personal protective equipment that includes safety glasses/goggles, gloves, laboratory coat and any other appropriate protection.
3. The availability of easy to locate and functional laboratory safety equipment. Laboratory safety equipment includes fume hoods, fire extinguishers, eyewash stations and safety showers.
4. The proper use of compressed gases.
5. Proper labeling and storage of hazardous chemicals and waste. Proper labeling reduces the risk of unexpected employee exposure, and proper storage reduces the likelihood of dangerous chemical reaction due to mixing incompatible chemicals.
6. Elimination of potential electric shock and fire by identifying and repairing exposed wires, exposed outlets, improper outlets near water sources, non-compliant circuit breakers and overloaded circuits.
7. Appropriate training in laboratory-specific hazards for affected employees.
8. Clean laboratories with unobstructed access to emergency exits and laboratory safety equipment.
9. Pressure and vacuum systems that are properly equipped to avoid explosions or implosions.

HOUSING AND RESIDENTIAL LIFE FIRE SAFETY POLICIES

To provide for the safety of all residents, Housing and Residential Life has developed an extensive set of guidelines and policies for all student housing. These documents are available electronically on the Housing and Residential

Life web page at reslife.okstate.edu/policies. This publication covers all policies for Residential Life facilities and includes information pertinent to fire safety.

Each residence hall has a designated Point of Assembly for residents to gather in the event of an emergency resulting in fire alarm activation. Residents are to evacuate the residence hall in the event of fire alarm activation. Information regarding Points of Assembly are outlined for staff in their training manual and located in their on-call bag. Residents are informed that fire drills are conducted each semester to prepare them for an actual emergency. The Housing and Residential Life Community Standards Handbook available online at reslife.okstate.edu/policies includes a section on Fire Safety, which each resident is to follow in the event of an emergency.

PROCEDURES FOR STUDENT HOUSING EVACUATION IN CASE OF FIRE

1. In inclement weather, wear a coat and shoes and carry a towel.
2. Close the windows and leave lights on in the room. Take your room key.
3. Leave the door closed and walk to the exit. If smoke is encountered, stay low for air.
4. Do not use an elevator.
5. If you need physical assistance for evacuation, call the OSU Police Department at (405)744-6523 or call 911.
6. If you are unable to leave the room, place a towel under the door if you see or smell smoke.
7. Wait for assistance in the room or area of refuge.

ON-CAMPUS HOUSING

Oklahoma State University provides a wealth of choices to choose from when it comes to on-campus housing. There are four types of housing available: community style, suites, deluxe suites and apartments.

Housing and Residential Life staff is on-site 24 hours a day, including weekends and holidays. Housing and Residential Life personnel may include community mentors, residential community educators, assistant residential community educators, desk clerks and assistant directors for Housing and Residential Life. Housing and Residential Life is responsible for all on-campus housing facilities at OSU.

HOUSING AND RESIDENTIAL LIFE PROHIBITED ITEMS AND EQUIPMENT

Any prohibited or misused appliances or equipment will be confiscated by the hall staff, and individuals responsible will be subject to disciplinary action.

Appliances

Prohibited appliances are: open-fire or open-coil cooking appliances, such as electric griddles, air fryers, and George Foreman Grills (except in Bost, Carreker East, Carreker West, Davis, Kamm, Peterson-Friend, McPherson, Morsani-Smith, Payne-Ellis, Sitlington, and Young Halls). Also prohibited are portable heaters, air conditioners, large amplifiers (public address system, oversize stereo and electric musical instrument), wireless routers and halogen lamps in all residential halls. Students may have one microwave oven in any residence hall room. Microwaves must be rated 900 watts or less at the highest setting. Portable cooking appliances may only be operated in the shared kitchen areas within the residential halls or apartments. Any electrical extension cord that is used must be 14 gauge or heavier. Do not nail extension cords to walls, place them under rugs or beds, string them on pipes, etc. Periodically inspect all cords and appliances for cracks or other defects. Please be aware that overloading an electric circuit with too many appliances can cause problems. Some appliances or furnishings have a higher likelihood of contributing to unsafe environments for community living. Housing and Residential Life regulates the use of these appliances to ensure the safety and security of the community.

Open Flames/Candles/Incense/ Flammable Liquids

Burning candles and incense, as well as kerosene lamps and other flammable liquid-fueled devices, are prohibited in all university-owned housing. Decorative candles must have non-burned, clipped wicks or be wickless. The No. 1 cause of residence hall and apartment fires is open flames. Incense, as well as being a fire hazard, can be an eye and respiratory irritant. To ensure the safety and comfort of our community, Housing and Residential Life prohibits these items.

Fireworks and Explosives

Under state and federal law, fireworks and explosives are prohibited in Housing and Residential Life buildings and on university grounds.

Refrigerators

Refrigerators are permitted with a limit of 3 amps and 5 cubic feet per room. The university is not responsible for loss of items due to power outages.

Decorations

For the safety of the community, no live trees or live cut greenery are permitted, lighting/wiring may not stretch across doorways or across common areas, and decorative lighting must be turned off when unattended. Use of paint or material that will result in permanent changes to the room/suite/apartment or common area(s) are strictly prohibited. Decorations may not cover more than 1/3 (33%) of door and surface area, be three-dimensional nor obstruct the peep hole or the room number. Decorations deemed unsafe by Housing and Residential Life may be removed.

Windows/Air Vent Blockage

In Iba, Parker, Wentz and University Commons Halls, the windows need to remain closed and in all buildings air vents unobstructed. No items should be hung in the windows, placed on the ledges or on balcony or patio railings in any Housing and Residential Life facilities.

Emergency/Safety Equipment

Tampering, damaging or inhibiting the use of emergency/safety equipment, including exterior residence hall doors, in any residence hall is prohibited. Residents may not use emergency equipment for any purpose other than emergency use. Residents involved in such activities will be subject to disciplinary action and may be removed from university housing. This regulation includes, but is not limited to, fire extinguishers, heat and smoke detectors, exit signs, fire alarm pull stations or locked exterior doors.

Smoking/Tobacco/Vaping Use

Oklahoma State University is a tobacco- and vaping-free environment; therefore, all residence halls and apartments are smoke-free and vaping-free. No smoking, tobacco or vaping use is permitted on university property.

Motor Vehicles

Motor vehicles, including recreational vehicles, are prohibited in Housing and Residential Life buildings and on university grounds. These items must be kept in the parking lots.

Hoverboards and Drones

Hoverboards (also known as self-balancing scooters) and drones, including possession and use, are prohibited in all campus housing. This applies to all residence halls and campus apartments, including Family and Graduate Student Housing.

Health & Safety Inspections

Each semester Housing and Residential Life staff will inspect rooms for safety concerns. When performing Health and Safety checks, staff will:

- Post notification for the community at least twenty-four (24) hours prior to the inspection, when possible
- Knock and announce themselves before entering
- Enter rooms in pairs and wear name tags
- Inspect only items that are in plain view (no closets, drawers, or refrigerators will be opened)

- Look for: unsafe cord placement (over doors, across door jams); unclean environment (rotting food, mold, offensive odor); doorway obstruction; electrical outlet overloading; fire hazards; maintenance concerns; pests, and paper covering more than 1/3 of door/walls.
- Document any policy violations

FIRE SAFETY

FIRE DRILLS

For the protection and safety of our community, announced and unannounced fire drills will be held at the direction of the OSU fire marshal during the academic year. To become familiar with evacuation routes, cooperation is mandatory. Anytime the alarm sounds, residents are to leave the building. Participation in fire evacuations is required by state law.

BENNETT

Exit north and assemble in the parking lot by Allie P Reyonlds stadium.

Exit east and assemble alongside Duck St.

Exit south and assemble in the courtyard.

Exit west and assemble across Knoblock in the southwest corner of the practice field.

BOOKER-STINCHCOMB

Exit north and assemble near Demaree Apartments.

Exit south and assemble near Commons parking.

BOST

Exit east and assemble south of Young.

Exit west and assemble in the parking lot by Risk Management.

CARREKER-EAST

Exit south and assemble in the parking lot.

CARREKER- WEST

Exit south and assemble in the parking lot.

COMMONS NORTH

Exit south and assemble near Commons South.

COMMONS SOUTH

Exit north and assemble near Commons North.

COMMONS WEST

Exit east and assemble near Commons South.

DAVIS

Exit east and assemble across the parking lot by Demaree Apartment S-42.

Exit west and assemble south of Sitlington.

IBA

Assemble northeast in the parking area.

KAMM

Exit south and assemble in the parking area.

McPHERSON

Exit east and assemble in the parking lot.

MORSANI-SMITH

Exit into the courtyard and assemble there.

PARKER

Exit north or south to the parking lot.

PATCHIN-JONES

East — Exit across Cleveland Street and assemble.

West — Exit either north toward Oliver Street or south to the basketball court.

PAYNE-ELLIS

Exit south and assemble in the courtyard.

PETERSON-FRIEND

Exit south and assemble at the northeast corner of Kamm.

STOUT

Exit east and assemble northeast corner of grassy courtyard.

VILLAGE A

Exit east across Cleveland Street and assemble in parking area north of Village E and F.

VILLAGE B

Exit east across Cleveland Street and assemble in parking area south of Village E and F.

VILLAGE C

Exit main entrance (north) and gather in parking area north of Village C. Exit courtyard doors (south) and go west to gather in parking area west of Villages C and D.

VILLAGE D

Exit main entrance (south) and gather in parking area south of Village D. Exit courtyard doors (north) and go west to gather in parking area west of Villages C and D.

VILLAGE E

Exit main entrance (north) and gather in parking area north of Village E. Exit courtyard doors (south) and go east to cross Drummond Lane, and go west to cross Cleveland Street.

VILLAGE F

Exit main entrance (south) and gather in parking area south of Village F. Exit courtyard doors (north) and go east to cross Drummond Lane, and go west to cross Cleveland Street.

SITLINGTON

Exit west and gather in parking area north of Davis Hall. Exit south and gather in parking area south of Sitlington Hall.

WENTZ

North to the parking lot or south to grassy area.

YOUNG

Exit east and assemble in the courtyard.

Exit west and assemble in the northeast corner of Bost.

ZINK-ALLEN

Exit south and assemble in the parking lot in front of Adams Market.

Zink — Exit north and assemble in the parking lot by Davis Hall.

Allen — Exit north and assemble in the parking lot by Bost Hall.

FIRE ALARM INSTRUCTIONS

To ensure the safety of all persons within the residence hall or apartment, occupants should be familiar with proper procedures in responding to fire alarms. These procedures include:

- In inclement weather, wear a coat and shoes and carry a towel.
- Close windows and leave lights on in room. Take room key.
- Leave the door closed and walk to exit. If smoke is encountered, stay low for air.
- Do not use an elevator.

PHYSICAL ASSISTANCE FOR EVACUATION: Call the OSU Police at 405-744-6523 or 911.

- If unable to leave room, place a towel under the door if smoke is either seen or smelled.
- Hang a towel out of the window, indicating that a person is in that room.
- Await assistance in the room or area of refuge.

SMOKE DETECTOR AND SPRINKLER SYSTEM

Each residence hall room is equipped with a smoke detector. Smoke detectors in rooms are inspected regularly by Facilities Management.

- Sprinkler systems have been installed for added safety in all residence facilities. To make the sprinkler system as effective as possible:
- Sprinklers must never be painted.
- Nothing may be hung from the sprinkler piping or sprinkler heads.
- Sprinkler heads may never be obstructed or altered.
- Nothing may be stored within 18 inches from the sprinkler head.
- Frisbees, footballs, baseballs, etc., are not to be thrown in rooms, hallways or other public areas.
- Report any damages to the sprinkler system to the front desk immediately.

By a mandate of the State Fire Marshal, an action plan has been adopted by OSU and Housing and Residential Life. Regulations are in effect regarding tampering with any fire safety equipment. This includes, but is not limited to, smoke detectors, sprinkler heads, fire alarms and fire extinguishers. The first offense of tampering will result in the student(s) being assessed a fine of \$500 (if the room is double occupancy, then each student will be assessed \$250). The student(s) will also be placed on Housing and Residential Life Probation and receive an educational sanction. On the second offense, a \$500 fine will be assessed (\$500 to each resident if double occupancy); the student(s) will be removed from university housing, and the contract(s) must be paid in full; an incident report will be forwarded to OSU Police Department and Environmental Health and Safety for a code violation citation with a potential fine of \$5,000 and one year imprisonment; and student(s) will be referred to Student Conduct Education and Administration.

If at any time the smoke detector starts beeping periodically, it may mean that the battery is low. If this happens, call the Residential Life Facilities Management Office at 405-744- 8510, and someone will replace the battery. Please do not replace the battery yourself.

The following chart lists the on-campus residential facilities and shows fire safety systems within each of those facilities. The additional charts provide information about fires that have occurred in a residential facility and whether they caused any injuries, deaths or damage.

PLANS FOR IMPROVEMENT TO FIRE SAFETY

During the 2021-2022 fiscal year, Housing and Residential Life upgraded and installed various fire safety equipment and evacuation plans. The fire panel in Bennett Hall was funded and is in the process of being upgraded. Fire evacuation maps were created and installed in all single student housing rooms including traditional style, suites and apartments. Apartments in FGSH were equipped with combination smoke/fire/carbon monoxide detectors during recent renovations. Housing and

Residential Life staff are continuously collaborating with Environmental Health and Safety to develop evacuation plans for each residential hall.





FIRE STATISTICS CHARTS



2023 STATISTICS AND RELATED INFORMATION REGARDING FIRES IN RESIDENTIAL FACILITIES

Facilities are shown alphabetically by: Halls, Suites, Commons, Apartments, and Centers.

NAME OF FACILITY	ADDRESS	TOTAL FIRES IN FACILITY	FIRE NUMBER	CATEGORY OF FIRE	CAUSE OF FIRE	FIRES REQUIRING MEDICAL TREATMENT	DEATHS RELATED TO A FIRE	VALUE OF PROPERTY DAMAGE OF FIRE
HALLS								
ALLEN HALL	112 W SCOTT AVE	0	0	NA	NA	0	0	\$0.00
BOOKER HALL	1205 W MCELROY RD	0	0	NA	NA	0	0	\$0.00
BOST HALL	610 N MONROE ST	0	0	NA	NA	0	0	\$0.00
CARREKER HALL EAST	1210 W MCELROY RD	0	0	NA	NA	0	0	\$0.00
CARREKER HALL WEST	1218 W MCELROY RD	0	0	NA	NA	0	0	\$0.00
DAVIS HALL	1225 W MCELROY RD	0	0	NA	NA	0	0	\$0.00
EAST BENNETT HALL	417 N KNOBLOCK	0	0	NA	NA	0	0	\$0.00
FRIEND HALL	320 N MCFARLAND ST	0	0	NA	NA	0	0	\$0.00
HELMS HALL	2610 W MCELROY RD	0	0	NA	NA	0	0	\$0.00
IBA HALL	1318 W FARM RD	0	0	NA	NA	0	0	\$0.00
KAMM HALL	320 N MCFARLAND ST	0	0	NA	NA	0	0	\$0.00
MCPHERSON HALL	925 N GARFIELD ST	0	0	NA	NA	0	0	\$0.00
MORSANI HALL	1205 W MCELROY RD	0	0	NA	NA	0	0	\$0.00
PARKER HALL	1212 PARKER LN	0	0	NA	NA	0	0	\$0.00
PAYNE-ELLIS HALL	1310 W MCELROY RD	0	0	NA	NA	0	0	\$0.00
PETERSON HALL	320 N MCFARLAND ST	0	0	NA	NA	0	0	\$0.00
SITLINGTON HALL	1215 W MCELROY RD	0	0	NA	NA	0	0	\$0.00
SMITH HALL	1205 W MCELROY RD	0	0	NA	NA	0	0	\$0.00
STINCHCOMB HALL	1205 W MCELROY RD	1	1	UNINTENTIONAL	COOKING GREASE FIRE	0	0	\$3,000.00
STOUT HALL	123 STOUT LN	0	0	NA	NA	0	0	\$0.00
WENTZ HALL	1313 W DRUMMOND LN	0	0	NA	NA	0	0	\$0.00
WEST BENNETT HALL	417 N KNOBLOCK	0	0	NA	NA	0	0	\$0.00
YOUNG HALL	612 N MONROE ST	0	0	NA	NA	0	0	\$0.00
ZINK HALL	112 W SCOTT AVE	0	0	NA	NA	0	0	\$0.00



2023 STATISTICS AND RELATED INFORMATION REGARDING FIRES IN RESIDENTIAL FACILITIES

NAME OF FACILITY	ADDRESS	TOTAL FIRES IN FACILITY	FIRE NUMBER	CATEGORY OF FIRE	CAUSE OF FIRE	FIRES REQUIRING MEDICAL TREATMENT	DEATHS RELATED TO A FIRE	VALUE OF PROPERTY DAMAGE OF FIRE
SUITES								
JONES SUITES	102 S CLEVELEND ST	0	0	NA	NA	0	0	\$0.00
PATCHIN SUITES	102 S CLEVELEND ST	0	0	NA	NA	0	0	\$0.00
COMMONS								
UNIVERSITY COMMONS NORTH	1340 W HALL OF FAME AVE	0	0	NA	NA	0	0	\$0.00
UNIVERSITY COMMONS WEST	1400 W HALL OF FAME AVE	0	0	NA	NA	0	0	\$0.00
UNIVERSITY COMONNS SOUTH	1320 W HALL OF FAME AVE	0	0	NA	NA	0	0	\$0.00
APARTMENTS								
BRUMLEY APTS. #120	220 N WALNUT ST	0	0	NA	NA	0	0	\$0.00
BRUMLEY APTS. #121	1514 W MILLER AVE	0	0	NA	NA	0	0	\$0.00
BRUMLEY APTS. #122	1604 W MILLER AVE	0	0	NA	NA	0	0	\$0.00
BRUMLEY APTS. #123	219 N ORCHARD ST	0	0	NA	NA	0	0	\$0.00
BRUMLEY APTS. #124	1605 W FARM RD	0	0	NA	NA	0	0	\$0.00
BRUMLEY APTS. #125	1515 W FARM RD	0	0	NA	NA	0	0	\$0.00
DEMAREE APTS. S-36	1325 W MCELROY RD	0	0	NA	NA	0	0	\$0.00
DEMAREE APTS. S-37	1405 W MCELROY RD	0	0	NA	NA	0	0	\$0.00
DEMAREE APTS. S-38	700 N GARFIELD ST	0	0	NA	NA	0	0	\$0.00
DEMAREE APTS. S-39	615 N GARFIELD ST	0	0	NA	NA	0	0	\$0.00
DEMAREE APTS. S-40	608 N GARFIELD ST	0	0	NA	NA	0	0	\$0.00
DEMAREE APTS. S-41	604 N GARFIELD ST	0	0	NA	NA	0	0	\$0.00
DEMAREE APTS. S-42	504 N GARFIELD ST	0	0	NA	NA	0	0	\$0.00
PROSSER APTS. N-16	1502 W WILLHAM AVE	0	0	NA	NA	0	0	\$0.00
PROSSER APTS. N-17	1500 W WILLHAM AVE	0	0	NA	NA	0	0	\$0.00
PROSSER APTS. N-18	1503 W WILLHAM AVE	0	0	NA	NA	0	0	\$0.00
PROSSER APTS. N-20	1506 W MCELROY RD	0	0	NA	NA	0	0	\$0.00
PROSSER APTS. N-21	1501 W WILLHAM AVE	0	0	NA	NA	0	0	\$0.00
PROSSER APTS. N-22	1404 W WILLHAM AVE	0	0	NA	NA	0	0	\$0.00
PROSSER APTS. N-23	1402 W WILLHAM AVE	0	0	NA	NA	0	0	\$0.00
PROSSER APTS. N-24	1405 W WILLHAM AVE	0	0	NA	NA	0	0	\$0.00

2023 STATISTICS AND RELATED INFORMATION REGARDING FIRES IN RESIDENTIAL FACILITIES

NAME OF FACILITY	ADDRESS	TOTAL FIRES IN FACILITY	FIRE NUMBER	CATEGORY OF FIRE	CAUSE OF FIRE	FIRES REQUIRING MEDICAL TREATMENT	DEATHS RELATED TO A FIRE	VALUE OF PROPERTY DAMAGE OF FIRE
PROSSER APTS. N-25	1500 W MCELROY RD	0	0	NA	NA	0	0	\$0.00
PROSSER APTS. N-26	802 N GARFIELD ST	0	0	NA	NA	0	0	\$0.00
PROSSER APTS. N-27	1401 W WILLHAM AVE	0	0	NA	NA	0	0	\$0.00
PROSSER APTS. N-28	902 N GARFIELD ST	0	0	NA	NA	0	0	\$0.00
STEVENS APTS. S-70	401 N MCDONALD ST	0	0	NA	NA	0	0	\$0.00
STEVENS APTS. S-71	402 N WALNUT ST	0	0	NA	NA	0	0	\$0.00
STEVENS APTS. S-72	404 N WALNUT ST	0	0	NA	NA	0	0	\$0.00
STEVENS APTS. S-73	1707 W SCOTT AVE	0	0	NA	NA	0	0	\$0.00
STEVENS APTS. S-74	1711 W SCOTT AVE	0	0	NA	NA	0	0	\$0.00
STEVENS APTS. S-75	411 N MCDONALD ST	0	0	NA	NA	0	0	\$0.00
STEVENS APTS. S-76	403 N MCDONALD ST	0	0	NA	NA	0	0	\$0.00
STEVENS APTS. S-90	504 N MCDONALD ST	0	0	NA	NA	0	0	\$0.00
STEVENS APTS. S-91	602 N MC DONALD ST	0	0	NA	NA	0	0	\$0.00
STEVENS APTS. S-92	710 N MCDONALD ST	0	0	NA	NA	0	0	\$0.00
VILLAGE APTS. A	224 N CLEVELAND ST	0	0	NA	NA	0	0	\$0.00
VILLAGE APTS. B	206 N CLEVELEND ST	0	0	NA	NA	0	0	\$0.00
VILLAGE APTS. C	209 N WALNUT ST	0	0	NA	NA	0	0	\$0.00
VILLAGE APTS. D	209 N WALNUT ST	0	0	NA	NA	0	0	\$0.00
VILLAGE APTS. E	209 N CLEVELAND ST	0	0	NA	NA	0	0	\$0.00
VILLAGE APTS. F	209 N CLEVELAND ST	1	1	UNINTENTIONAL	STOVE ELECTRICAL MALFUNCTION	0	0	\$500.00
WEST APTS. S-80	1802 W SCOTT AVE	0	0	NA	NA	0	0	\$0.00
WEST APTS. S-81	1710 W SCOTT AVE	0	0	NA	NA	0	0	\$0.00
WEST APTS. S-82	504 N WALNUT ST	0	0	NA	NA	0	0	\$0.00
WEST APTS. S-83	508 N WALNUT ST	0	0	NA	NA	0	0	\$0.00
WEST APTS. S-84	608 N WALNUT ST	0	0	NA	NA	0	0	\$0.00
WEST APTS. S-85	1629 W MCELROY RD	0	0	NA	NA	0	0	\$0.00
WEST APTS. S-86	1647 W MCELROY RD	0	0	NA	NA	0	0	\$0.00
WEST APTS. S-87	1667 W MCELROY RD	0	0	NA	NA	0	0	\$0.00



2023 STATISTICS AND RELATED INFORMATION REGARDING FIRES IN RESIDENTIAL FACILITIES

NAME OF FACILITY	ADDRESS	TOTAL FIRES IN FACILITY	FIRE NUMBER	CATEGORY OF FIRE	CAUSE OF FIRE	FIRES REQUIRING MEDICAL TREATMENT	DEATHS RELATED TO A FIRE	VALUE OF PROPERTY DAMAGE OF FIRE
WEST APTS. S-88	709 N MCDONALD ST	0	0	NA	NA	0	0	\$0.00
WEST APTS. S-89	605 N MCDONALD ST	0	0	NA	NA	0	0	\$0.00
WILLIAMS APTS. N-12	806 N WALNUT ST	0	0	NA	NA	0	0	\$0.00
WILLIAMS APTS. N-13	900 N WALNUT ST	0	0	NA	NA	0	0	\$0.00
WILLIAMS APTS. N-14	902 N WALNUT ST	0	0	NA	NA	0	0	\$0.00
WILLIAMS APTS. N-15	904 W WALNUT ST	0	0	NA	NA	0	0	\$0.00
WILLIAMS APTS. N-19	803 N WALNUT ST	0	0	NA	NA	0	0	\$0.00
WILLIAMS APTS. N-101	1618 W MCELROY RD	0	0	NA	NA	0	0	\$0.00
WILLIAMS APTS. N-102	1636 W MCELROY RD	0	0	NA	NA	0	0	\$0.00
WILLIAMS APTS. N-103	1650 W MCELROY RD	0	0	NA	NA	0	0	\$0.00
WILLIAMS APTS. N-104	1668 W MCELROY RD	0	0	NA	NA	0	0	\$0.00
WILLIAMS APTS. N-105	1682 W MCELROY RD	0	0	NA	NA	0	0	\$0.00
CENTERS								
BEEF CATTLE ARENA	5902 W 6TH AVE	0	0	NA	NA	0	0	\$0.00
SWINE EDUCATION AND RESEARCH CENTER	2945 W MCELROY RD	0	0	NA	NA	0	0	\$0.00
TOTAL		2	2			0	0	\$3,500.00





2022 STATISTICS AND RELATED INFORMATION REGARDING FIRES IN RESIDENTIAL FACILITIES

Facilities are shown alphabetically by: Halls, Suites, Commons, Apartments, and Centers.

NAME OF FACILITY	ADDRESS	TOTAL FIRES IN FACILITY	FIRE NUMBER	CATEGORY OF FIRE	CAUSE OF FIRE	FIRES REQUIRING MEDICAL TREATMENT	DEATHS RELATED TO A FIRE	VALUE OF PROPERTY DAMAGE OF FIRE
HALLS								
ALLEN HALL	112 W SCOTT AVE	0	0	NA	NA	0	0	\$0.00
BOOKER HALL	1205 W MCELROY RD	0	0	NA	NA	0	0	\$0.00
BOST HALL	610 N MONROE ST	1	1	UNINTENTIONAL	UNATTENDED COOKING	0	0	\$75,000.00
CARREKER HALL EAST	1210 W MCELROY RD	0	0	NA	NA	0	0	\$0.00
CARREKER HALL WEST	1218 W MCELROY RD	0	0	NA	NA	0	0	\$0.00
DAVIS HALL	1225 W MCELROY RD	0	0	NA	NA	0	0	\$0.00
EAST BENNETT HALL	417 N KNOBLOCK	0	0	NA	NA	0	0	\$0.00
FRIEND HALL	320 N MCFARLAND ST	0	0	NA	NA	0	0	\$0.00
HELMS HALL	2610 W MCELROY RD	0	0	NA	NA	0	0	\$0.00
IBA HALL	1318 W FARM RD	0	0	NA	NA	0	0	\$0.00
KAMM HALL	320 N MCFARLAND ST	0	0	NA	NA	0	0	\$0.00
MCPHERSON HALL	925 N GARFIELD ST	0	0	NA	NA	0	0	\$0.00
MORSANI HALL	1205 W MCELROY RD	0	0	NA	NA	0	0	\$0.00
PARKER HALL	1212 PARKER LN	0	0	NA	NA	0	0	\$0.00
PAYNE-ELLIS HALL	1310 W MCELROY RD	0	0	NA	NA	0	0	\$0.00
PETERSON HALL	320 N MCFARLAND ST	0	0	NA	NA	0	0	\$0.00
SITLINGTON HALL	1215 W MCELROY RD	0	0	NA	NA	0	0	\$0.00
SMITH HALL	1205 W MCELROY RD	0	0	NA	NA	0	0	\$0.00
STINCHCOMB HALL	1205 W MCELROY RD	0	0	NA	NA	0	0	\$0.00
STOUT HALL	123 STOUT LN	0	0	NA	NA	0	0	\$0.00
WENTZ HALL	1313 W DRUMMOND LN	0	0	NA	NA	0	0	\$0.00
WEST BENNETT HALL	417 N KNOBLOCK	0	0	NA	NA	0	0	\$0.00
YOUNG HALL	612 N MONROE ST	0	0	NA	NA	0	0	\$0.00
ZINK HALL	112 W SCOTT AVE	0	0	NA	NA	0	0	\$0.00



2022 STATISTICS AND RELATED INFORMATION REGARDING FIRES IN RESIDENTIAL FACILITIES

NAME OF FACILITY	ADDRESS	TOTAL FIRES IN FACILITY	FIRE NUMBER	CATEGORY OF FIRE	CAUSE OF FIRE	FIRES REQUIRING MEDICAL TREATMENT	DEATHS RELATED TO A FIRE	VALUE OF PROPERTY DAMAGE OF FIRE
SUITES								
JONES SUITES	102 S CLEVELEND ST	0	0	NA	NA	0	0	\$0.00
PATCHIN SUITES	102 S CLEVELEND ST	0	0	NA	NA	0	0	\$0.00
COMMONS								
UNIVERSITY COMMONS NORTH	1340 W HALL OF FAME AVE	0	0	NA	NA	0	0	\$0.00
UNIVERSITY COMMONS WEST	1400 W HALL OF FAME AVE	0	0	NA	NA	0	0	\$0.00
UNIVERSITY COMONNS SOUTH	1320 W HALL OF FAME AVE	0	0	NA	NA	0	0	\$0.00
APARTMENTS								
BRUMLEY APTS. #120	220 N WALNUT ST	0	0	NA	NA	0	0	\$0.00
BRUMLEY APTS. #121	1514 W MILLER AVE	0	0	NA	NA	0	0	\$0.00
BRUMLEY APTS. #122	1604 W MILLER AVE	0	0	NA	NA	0	0	\$0.00
BRUMLEY APTS. #123	219 N ORCHARD ST	0	0	NA	NA	0	0	\$0.00
BRUMLEY APTS. #124	1605 W FARM RD	0	0	NA	NA	0	0	\$0.00
BRUMLEY APTS. #125	1515 W FARM RD	0	0	NA	NA	0	0	\$0.00
DEMAREE APTS. S-36	1325 W MCELROY RD	0	0	NA	NA	0	0	\$0.00
DEMAREE APTS. S-37	1405 W MCELROY RD	0	0	NA	NA	0	0	\$0.00
DEMAREE APTS. S-38	700 N GARFIELD ST	0	0	NA	NA	0	0	\$0.00
DEMAREE APTS. S-39	615 N GARFIELD ST	0	0	NA	NA	0	0	\$0.00
DEMAREE APTS. S-40	608 N GARFIELD ST	0	0	NA	NA	0	0	\$0.00
DEMAREE APTS. S-41	604 N GARFIELD ST	0	0	NA	NA	0	0	\$0.00
DEMAREE APTS. S-42	504 N GARFIELD ST	0	0	NA	NA	0	0	\$0.00
PROSSER APTS. N-16	1502 W WILLHAM AVE	1	1	UNINTENTIONAL	MAINTENANCE WORKER USING SPRAY FOAM NEXT TO A PILOT LIGHT	0	0	\$0.00
PROSSER APTS. N-17	1500 W WILLHAM AVE	0	0	NA	NA	0	0	\$0.00
PROSSER APTS. N-18	1503 W WILLHAM AVE	0	0	NA	NA	0	0	\$0.00
PROSSER APTS. N-20	1506 W MCELROY RD	0	0	NA	NA	0	0	\$0.00
PROSSER APTS. N-21	1501 W WILLHAM AVE	0	0	NA	NA	0	0	\$0.00
PROSSER APTS. N-22	1404 W WILLHAM AVE	0	0	NA	NA	0	0	\$0.00

2022 STATISTICS AND RELATED INFORMATION REGARDING FIRES IN RESIDENTIAL FACILITIES

NAME OF FACILITY	ADDRESS	TOTAL FIRES IN FACILITY	FIRE NUMBER	CATEGORY OF FIRE	CAUSE OF FIRE	FIRES REQUIRING MEDICAL TREATMENT	DEATHS RELATED TO A FIRE	VALUE OF PROPERTY DAMAGE OF FIRE
PROSSER APTS. N-23	1402 W WILLHAM AVE	0	0	NA	NA	0	0	\$0.00
PROSSER APTS. N-24	1405 W WILLHAM AVE	0	0	NA	NA	0	0	\$0.00
PROSSER APTS. N-25	1500 W MCELROY RD	0	0	NA	NA	0	0	\$0.00
PROSSER APTS. N-26	802 N GARFIELD ST	0	0	NA	NA	0	0	\$0.00
PROSSER APTS. N-27	1401 W WILLHAM AVE	0	0	NA	NA	0	0	\$0.00
PROSSER APTS. N-28	902 N GARFIELD ST	0	0	NA	NA	0	0	\$0.00
STEVENS APTS. S-70	401 N MCDONALD ST	0	0	NA	NA	0	0	\$0.00
STEVENS APTS. S-71	402 N WALNUT ST	0	0	NA	NA	0	0	\$0.00
STEVENS APTS. S-72	404 N WALNUT ST	0	0	NA	NA	0	0	\$0.00
STEVENS APTS. S-73	1707 W SCOTT AVE	0	0	NA	NA	0	0	\$0.00
STEVENS APTS. S-74	1711 W SCOTT AVE	0	0	NA	NA	0	0	\$0.00
STEVENS APTS. S-75	411 N MCDONALD ST	0	0	NA	NA	0	0	\$0.00
STEVENS APTS. S-76	403 N MCDONALD ST	0	0	NA	NA	0	0	\$0.00
STEVENS APTS. S-90	504 N MCDONALD ST	0	0	NA	NA	0	0	\$0.00
STEVENS APTS. S-91	602 N MC DONALD ST	0	0	NA	NA	0	0	\$0.00
STEVENS APTS. S-92	710 N MCDONALD ST	0	0	NA	NA	0	0	\$0.00
VILLAGE APTS. A	224 N CLEVELAND ST	0	0	NA	NA	0	0	\$0.00
VILLAGE APTS. B	206 N CLEVELEND ST	0	0	NA	NA	0	0	\$0.00
VILLAGE APTS. C	209 N WALNUT ST	0	0	NA	NA	0	0	\$0.00
VILLAGE APTS. D	209 N WALNUT ST	0	0	NA	NA	0	0	\$0.00
VILLAGE APTS. E	209 N CLEVELAND ST	0	0	NA	NA	0	0	\$0.00
VILLAGE APTS. F	209 N CLEVELAND ST	0	0	NA	NA	0	0	\$0.00
WEST APTS. S-80	1802 W SCOTT AVE	0	0	NA	NA	0	0	\$0.00
WEST APTS. S-81	1710 W SCOTT AVE	0	0	NA	NA	0	0	\$0.00
WEST APTS. S-82	504 N WALNUT ST	0	0	NA	NA	0	0	\$0.00
WEST APTS. S-83	508 N WALNUT ST	0	0	NA	NA	0	0	\$0.00
WEST APTS. S-84	608 N WALNUT ST	0	0	NA	NA	0	0	\$0.00
WEST APTS. S-85	1629 W MCELROY RD	0	0	NA	NA	0	0	\$0.00
WEST APTS. S-86	1647 W MCELROY RD	0	0	NA	NA	0	0	\$0.00



2022 STATISTICS AND RELATED INFORMATION REGARDING FIRES IN RESIDENTIAL FACILITIES

NAME OF FACILITY	ADDRESS	TOTAL FIRES IN FACILITY	FIRE NUMBER	CATEGORY OF FIRE	CAUSE OF FIRE	FIRES REQUIRING MEDICAL TREATMENT	DEATHS RELATED TO A FIRE	VALUE OF PROPERTY DAMAGE OF FIRE
WEST APTS. S-87	1667 W MCELROY RD	0	0	NA	NA	0	0	\$0.00
WEST APTS. S-88	709 N MCDONALD ST	0	0	NA	NA	0	0	\$0.00
WEST APTS. S-89	605 N MCDONALD ST	0	0	NA	NA	0	0	\$0.00
WILLIAMS APTS. N-12	806 N WALNUT ST	0	0	NA	NA	0	0	\$0.00
WILLIAMS APTS. N-13	900 N WALNUT ST	0	0	NA	NA	0	0	\$0.00
WILLIAMS APTS. N-14	902 N WALNUT ST	0	0	NA	NA	0	0	\$0.00
WILLIAMS APTS. N-15	904 W WALNUT ST	0	0	NA	NA	0	0	\$0.00
WILLIAMS APTS. N-19	803 N WALNUT ST	0	0	NA	NA	0	0	\$0.00
WILLIAMS APTS. N-101	1618 W MCELROY RD	0	0	NA	NA	0	0	\$0.00
WILLIAMS APTS. N-102	1636 W MCELROY RD	0	0	NA	NA	0	0	\$0.00
WILLIAMS APTS. N-103	1650 W MCELROY RD	0	0	NA	NA	0	0	\$0.00
WILLIAMS APTS. N-104	1668 W MCELROY RD	0	0	NA	NA	0	0	\$0.00
WILLIAMS APTS. N-105	1682 W MCELROY RD	0	0	NA	NA	0	0	\$0.00
CENTERS								
BEEF CATTLE ARENA	5902 W 6TH AVE	0	0	NA	NA	0	0	\$0.00
SWINE EDUCATION AND RESEARCH CENTER	2945 W MCELROY RD	0	0	NA	NA	0	0	\$0.00
TOTAL		2	2			0	0	\$75,000.00





2021 STATISTICS AND RELATED INFORMATION REGARDING FIRES IN RESIDENTIAL FACILITIES

Facilities are shown alphabetically by: Halls, Suites, Commons, Apartments, and Centers.

NAME OF FACILITY	ADDRESS	TOTAL FIRES IN FACILITY	FIRE NUMBER	CATEGORY OF FIRE	CAUSE OF FIRE	FIRES REQUIRING MEDICAL TREATMENT	DEATHS RELATED TO A FIRE	VALUE OF PROPERTY DAMAGE OF FIRE
HALLS								
ALLEN HALL	112 W SCOTT AVE	0	0	NA	NA	0	0	\$0.00
BOOKER HALL	1205 W MCELROY RD	0	0	NA	NA	0	0	\$0.00
BOST HALL	610 N MONROE ST	0	0	NA	NA	0	0	\$0.00
CARREKER HALL EAST	1210 W MCELROY RD	0	0	NA	NA	0	0	\$0.00
CARREKER HALL WEST	1218 W MCELROY RD	0	0	NA	NA	0	0	\$0.00
DAVIS HALL	1225 W MCELROY RD	0	0	NA	NA	0	0	\$0.00
EAST BENNETT HALL	417 N KNOBLOCK	0	0	NA	NA	0	0	\$0.00
FRIEND HALL	320 N MCFARLAND ST	0	0	NA	NA	0	0	\$0.00
HELMS HALL	2610 W MCELROY RD	0	0	NA	NA	0	0	\$0.00
IBA HALL	1318 W FARM RD	0	0	NA	NA	0	0	\$0.00
KAMM HALL	320 N MCFARLAND ST	0	0	NA	NA	0	0	\$0.00
MCPHERSON HALL	925 N GARFIELD ST	0	0	NA	NA	0	0	\$0.00
MORSANI HALL	1205 W MCELROY RD	0	0	NA	NA	0	0	\$0.00
PARKER HALL	1212 PARKER LN	0	0	NA	NA	0	0	\$0.00
PAYNE-ELLIS HALL	1310 W MCELROY RD	0	0	NA	NA	0	0	\$0.00
PETERSON HALL	320 N MCFARLAND ST	0	0	NA	NA	0	0	\$0.00
SITLINGTON HALL	1215 W MCELROY RD	0	0	NA	NA	0	0	\$0.00
SMITH HALL	1205 W MCELROY RD	0	0	NA	NA	0	0	\$0.00
STINCHCOMB HALL	1205 W MCELROY RD	0	0	NA	NA	0	0	\$0.00
STOUT HALL	123 STOUT LN	0	0	NA	NA	0	0	\$0.00
WENTZ HALL	1313 W DRUMMOND LN	0	0	NA	NA	0	0	\$0.00
WEST BENNETT HALL	417 N KNOBLOCK	0	0	NA	NA	0	0	\$0.00
YOUNG HALL	612 N MONROE ST	0	0	NA	NA	0	0	\$0.00
ZINK HALL	112 W SCOTT AVE	0	0	NA	NA	0	0	\$0.00



2021 STATISTICS AND RELATED INFORMATION REGARDING FIRES IN RESIDENTIAL FACILITIES

NAME OF FACILITY	ADDRESS	TOTAL FIRES IN FACILITY	FIRE NUMBER	CATEGORY OF FIRE	CAUSE OF FIRE	FIRES REQUIRING MEDICAL TREATMENT	DEATHS RELATED TO A FIRE	VALUE OF PROPERTY DAMAGE OF FIRE
SUITES								
JONES SUITES	102 S CLEVELEND ST	0	0	NA	NA	0	0	\$0.00
PATCHIN SUITES	102 S CLEVELEND ST	0	0	NA	NA	0	0	\$0.00
COMMONS								
UNIVERSITY COMMONS NORTH	1340 W HALL OF FAME AVE	0	0	NA	NA	0	0	\$0.00
UNIVERSITY COMMONS WEST	1400 W HALL OF FAME AVE	0	0	NA	NA	0	0	\$0.00
UNIVERSITY COMONNS SOUTH	1320 W HALL OF FAME AVE	0	0	NA	NA	0	0	\$0.00
APARTMENTS								
BRUMLEY APTS. #120	220 N WALNUT ST	0	0	NA	NA	0	0	\$0.00
BRUMLEY APTS. #121	1514 W MILLER AVE	0	0	NA	NA	0	0	\$0.00
BRUMLEY APTS. #122	1604 W MILLER AVE	0	0	NA	NA	0	0	\$0.00
BRUMLEY APTS. #123	219 N ORCHARD ST	0	0	NA	NA	0	0	\$0.00
BRUMLEY APTS. #124	1605 W FARM RD	0	0	NA	NA	0	0	\$0.00
BRUMLEY APTS. #125	1515 W FARM RD	0	0	NA	NA	0	0	\$0.00
DEMAREE APTS. S-36	1325 W MCELROY RD	0	0	NA	NA	0	0	\$0.00
DEMAREE APTS. S-37	1405 W MCELROY RD	0	0	NA	NA	0	0	\$0.00
DEMAREE APTS. S-38	700 N GARFIELD ST	0	0	NA	NA	0	0	\$0.00
DEMAREE APTS. S-39	615 N GARFIELD ST	0	0	NA	NA	0	0	\$0.00
DEMAREE APTS. S-40	608 N GARFIELD ST	0	0	NA	NA	0	0	\$0.00
DEMAREE APTS. S-41	604 N GARFIELD ST	0	0	NA	NA	0	0	\$0.00
DEMAREE APTS. S-42	504 N GARFIELD ST	0	0	NA	NA	0	0	\$0.00
PROSSER APTS. N-16	1502 W WILLHAM AVE	0	0	NA	NA	0	0	\$0.00
PROSSER APTS. N-17	1500 W WILLHAM AVE	0	0	NA	NA	0	0	\$0.00
PROSSER APTS. N-18	1503 W WILLHAM AVE	0	0	NA	NA	0	0	\$0.00
PROSSER APTS. N-20	1506 W MCELROY RD	0	0	NA	NA	0	0	\$0.00
PROSSER APTS. N-21	1501 W WILLHAM AVE	0	0	NA	NA	0	0	\$0.00
PROSSER APTS. N-22	1404 W WILLHAM AVE	0	0	NA	NA	0	0	\$0.00
PROSSER APTS. N-23	1402 W WILLHAM AVE	0	0	NA	NA	0	0	\$0.00
PROSSER APTS. N-24	1405 W WILLHAM AVE	0	0	NA	NA	0	0	\$0.00

2021 STATISTICS AND RELATED INFORMATION REGARDING FIRES IN RESIDENTIAL FACILITIES

NAME OF FACILITY	ADDRESS	TOTAL FIRES IN FACILITY	FIRE NUMBER	CATEGORY OF FIRE	CAUSE OF FIRE	FIRES REQUIRING MEDICAL TREATMENT	DEATHS RELATED TO A FIRE	VALUE OF PROPERTY DAMAGE OF FIRE
PROSSER APTS. N-25	1500 W MCELROY RD	0	0	NA	NA	0	0	\$0.00
PROSSER APTS. N-26	802 N GARFIELD ST	0	0	NA	NA	0	0	\$0.00
PROSSER APTS. N-27	1401 W WILLHAM AVE	0	0	NA	NA	0	0	\$0.00
PROSSER APTS. N-28	902 N GARFIELD ST	0	0	NA	NA	0	0	\$0.00
STEVENS APTS. S-70	401 N MCDONALD ST	0	0	NA	NA	0	0	\$0.00
STEVENS APTS. S-71	402 N WALNUT ST	0	0	NA	NA	0	0	\$0.00
STEVENS APTS. S-72	404 N WALNUT ST	0	0	NA	NA	0	0	\$0.00
STEVENS APTS. S-73	1707 W SCOTT AVE	0	0	NA	NA	0	0	\$0.00
STEVENS APTS. S-74	1711 W SCOTT AVE	0	0	NA	NA	0	0	\$0.00
STEVENS APTS. S-75	411 N MCDONALD ST	0	0	NA	NA	0	0	\$0.00
STEVENS APTS. S-76	403 N MCDONALD ST	0	0	NA	NA	0	0	\$0.00
STEVENS APTS. S-90	504 N MCDONALD ST	0	0	NA	NA	0	0	\$0.00
STEVENS APTS. S-91	602 N MC DONALD ST	0	0	NA	NA	0	0	\$0.00
STEVENS APTS. S-92	710 N MCDONALD ST	0	0	NA	NA	0	0	\$0.00
VILLAGE APTS. A	224 N CLEVELAND ST	0	0	NA	NA	0	0	\$0.00
VILLAGE APTS. B	206 N CLEVELEND ST	0	0	NA	NA	0	0	\$0.00
VILLAGE APTS. C	209 N WALNUT ST	0	0	NA	NA	0	0	\$0.00
VILLAGE APTS. D	209 N WALNUT ST	0	0	NA	NA	0	0	\$0.00
VILLAGE APTS. E	209 N CLEVELAND ST	0	0	NA	NA	0	0	\$0.00
VILLAGE APTS. F	209 N CLEVELAND ST	0	0	NA	NA	0	0	\$0.00
WEST APTS. S-80	1802 W SCOTT AVE	0	0	NA	NA	0	0	\$0.00
WEST APTS. S-81	1710 W SCOTT AVE	0	0	NA	NA	0	0	\$0.00
WEST APTS. S-82	504 N WALNUT ST	0	0	NA	NA	0	0	\$0.00
WEST APTS. S-83	508 N WALNUT ST	0	0	NA	NA	0	0	\$0.00
WEST APTS. S-84	608 N WALNUT ST	0	0	NA	NA	0	0	\$0.00
WEST APTS. S-85	1629 W MCELROY RD	0	0	NA	NA	0	0	\$0.00
WEST APTS. S-86	1647 W MCELROY RD	0	0	NA	NA	0	0	\$0.00
WEST APTS. S-87	1667 W MCELROY RD	0	0	NA	NA	0	0	\$0.00
WEST APTS. S-88	709 N MCDONALD ST	0	0	NA	NA	0	0	\$0.00



2021 STATISTICS AND RELATED INFORMATION REGARDING FIRES IN RESIDENTIAL FACILITIES

NAME OF FACILITY	ADDRESS	TOTAL FIRES IN FACILITY	FIRE NUMBER	CATEGORY OF FIRE	CAUSE OF FIRE	FIRES REQUIRING MEDICAL TREATMENT	DEATHS RELATED TO A FIRE	VALUE OF PROPERTY DAMAGE OF FIRE
WEST APTS. S-89	605 N MCDONALD ST	0	0	NA	NA	0	0	\$0.00
WILLIAMS APTS. N-12	806 N WALNUT ST	0	0	NA	NA	0	0	\$0.00
WILLIAMS APTS. N-13	900 N WALNUT ST	0	0	NA	NA	0	0	\$0.00
WILLIAMS APTS. N-14	902 N WALNUT ST	0	0	NA	NA	0	0	\$0.00
WILLIAMS APTS. N-15	904 W WALNUT ST	0	0	NA	NA	0	0	\$0.00
WILLIAMS APTS. N-19	803 N WALNUT ST	0	0	NA	NA	0	0	\$0.00
WILLIAMS APTS. N-101	1618 W MCELROY RD	0	0	NA	NA	0	0	\$0.00
WILLIAMS APTS. N-102	1636 W MCELROY RD	0	0	NA	NA	0	0	\$0.00
WILLIAMS APTS. N-103	1650 W MCELROY RD	0	0	NA	NA	0	0	\$0.00
WILLIAMS APTS. N-104	1668 W MCELROY RD	0	0	NA	NA	0	0	\$0.00
WILLIAMS APTS. N-105	1682 W MCELROY RD	0	0	NA	NA	0	0	\$0.00
CENTERS								
BEEF CATTLE ARENA	5902 W 6TH AVE	0	0	NA	NA	0	0	\$0.00
SWINE EDUCATION AND RESEARCH CENTER	2945 W MCELROY RD	0	0	NA	NA	0	0	\$0.00
TOTAL		0	0			0	0	\$0.00





FIRE SAFETY SYSTEMS CHARTS



2023 ANNUAL FIRE SAFETY REPORT ON STUDENT HOUSING FIRE SAFETY SYSTEMS AND FIRE DRILLS

FA = Proprietary Fire Alarm and Detection System monitored by OSU PD

FA(P) = Fire Alarm and Detection System monitored by a private company other than OSU

SDAC = Hard-wired smoke alarms

SBD = Stand Alone Battery Powered Smoke Alarms

Facilities are shown alphabetically by: Halls, Suites, Commons, Apartments, and Centers.

NAME OF FACILITY	ADDRESS	FIRE DETECTION INFORMATION	OTHER FIRE SAFETY FEATURES				
		ALARM SYSTEM	FULL SPRINKLED	PARTIALLY SPRINKLED	STANDPIPE	PORTABLE FIRE EXTINGUISHERS	FIRE DRILLS EACH YEAR
HALLS							
ALLEN HALL	112 W SCOTT AVE	FA	X		X	X	2
BOOKER HALL	1205 W MCELROY RD	FA	X		X	X	2
BOST HALL	610 N MONROE ST	FA	X			X	2
CARREKER HALL EAST	1210 W MCELROY RD	FA	X			X	2
CARREKER HALL WEST	1218 W MCELROY RD	FA	X			X	2
DAVIS HALL	1225 W MCELROY RD	FA	X			X	2
EAST BENNETT HALL	417 N KNOBLOCK	FA	X		X	X	2
FRIEND HALL	320 N MCFARLAND ST	FA	X			X	2
HELMS HALL	2610 W MCELROY RD	FA	X			X	2
IBA HALL	1318 W FARM RD	FA	X		X	X	2
KAMM HALL	320 N MCFARLAND ST	FA	X			X	2
MCPHERSON HALL	925 N GARFIELD ST	FA	X			X	2
MORSANI HALL	1205 W MCELROY RD	FA	X			X	2
PARKER HALL	1212 PARKER LN	SDB / FA	X		X	X	2
PAYNE-ELLIS HALL	1310 W MCELROY RD	FA	X			X	2
PETERSON HALL	320 N MCFARLAND ST	FA	X			X	2
SITLINGTON HALL	1215 W MCELROY RD	FA	X			X	2
SMITH HALL	1205 W MCELROY RD	FA	X			X	2
STINCHCOMB HALL	1205 W MCELROY RD	FA	X		X	X	2
STOUT HALL	123 STOUT LN	FA	X		X	X	2
WENTZ HALL	1313 W DRUMMOND LN	FA	X		X	X	2
WEST BENNETT HALL	417 N KNOBLOCK	FA	X		X	X	2
YOUNG HALL	612 N MONROE ST	FA	X			X	2
ZINK HALL	112 W SCOTT AVE	FA	X		X	X	2



2023 ANNUAL FIRE SAFETY REPORT ON STUDENT HOUSING FIRE SAFETY SYSTEMS AND FIRE DRILLS

NAME OF FACILITY	ADDRESS	FIRE DETECTION INFORMATION	OTHER FIRE SAFETY FEATURES				
		ALARM SYSTEM	FULL SPRINKLED	PARTIALLY SPRINKLED	STANDPIPE	PORTABLE FIRE EXTINGUISHERS	FIRE DRILLS EACH YEAR
SUITES							
JONES SUITES	102 S CLEVELEND ST	FA	X		X	X	2
PATCHIN SUITES	102 S CLEVELEND ST	FA	X		X	X	2
COMMONS							
UNIVERSITY COMMONS NORTH	1340 W HALL OF FAME AVE	FA	X		X	X	2
UNIVERSITY COMMONS WEST	1400 W HALL OF FAME AVE	FA	X		X	X	2
UNIVERSITY COMONNS SOUTH	1320 W HALL OF FAME AVE	FA	X		X	X	2
APARTMENTS							
BRUMLEY APTS. #120	220 N WALNUT ST	SDB					0
BRUMLEY APTS. #121	1514 W MILLER AVE	SDB					0
BRUMLEY APTS. #122	1604 W MILLER AVE	SDB					0
BRUMLEY APTS. #123	219 N ORCHARD ST	SDB					0
BRUMLEY APTS. #124	1605 W FARM RD	SDB					0
BRUMLEY APTS. #125	1515 W FARM RD	SDB					0
DEMAREE APTS. S-36	1325 W MCELROY RD	SDAC / SBD				X	0
DEMAREE APTS. S-37	1405 W MCELROY RD	SDAC / SBD				X	0
DEMAREE APTS. S-38	700 N GARFIELD ST	SDAC / SBD				X	0
DEMAREE APTS. S-39	615 N GARFIELD ST	SDAC / SBD				X	0
DEMAREE APTS. S-40	608 N GARFIELD ST	SDAC / SBD				X	0
DEMAREE APTS. S-41	604 N GARFIELD ST	SDAC / SBD				X	0
DEMAREE APTS. S-42	504 N GARFIELD ST	SDAC / SBD				X	0
PROSSER APTS. N-16	1502 W WILLHAM AVE	SDAC / SBD				X	0
PROSSER APTS. N-17	1500 W WILLHAM AVE	SDAC / SBD				X	0
PROSSER APTS. N-18	1503 W WILLHAM AVE	SDAC / SBD				X	0
PROSSER APTS. N-20	1506 W MCELROY RD	SDAC / SBD				X	0
PROSSER APTS. N-21	1501 W WILLHAM AVE	SDAC / SBD				X	0
PROSSER APTS. N-22	1404 W WILLHAM AVE	SDAC / SBD				X	0

2023 ANNUAL FIRE SAFETY REPORT ON STUDENT HOUSING FIRE SAFETY SYSTEMS AND FIRE DRILLS

3 of 4

NAME OF FACILITY	ADDRESS	FIRE DETECTION INFORMATION	OTHER FIRE SAFETY FEATURES				
		ALARM SYSTEM	FULL SPRINKLED	PARTIALLY SPRINKLED	STANDPIPE	PORTABLE FIRE EXTINGUISHERS	FIRE DRILLS EACH YEAR
PROSSER APTS. N-23	1402 W WILLHAM AVE	SDAC / SBD				X	0
PROSSER APTS. N-24	1405 W WILLHAM AVE	SDAC / SBD				X	0
PROSSER APTS. N-25	1500 W MCELROY RD	SDAC / SBD				X	0
PROSSER APTS. N-26	802 N GARFIELD ST	SDAC / SBD				X	0
PROSSER APTS. N-27	1401 W WILLHAM AVE	SDAC / SBD				X	0
PROSSER APTS. N-28	902 N GARFIELD ST	SDAC / SBD				X	0
STEVENS APTS. S-70	401 N MCDONALD ST	SDAC / SBD				X	0
STEVENS APTS. S-71	402 N WALNUT ST	SDAC / SBD				X	0
STEVENS APTS. S-72	404 N WALNUT ST	SDAC / SBD				X	0
STEVENS APTS. S-73	1707 W SCOTT AVE	SDAC / SBD				X	0
STEVENS APTS. S-74	1711 W SCOTT AVE	SDAC / SBD				X	0
STEVENS APTS. S-75	411 N MCDONALD ST	SDAC / SBD				X	0
STEVENS APTS. S-76	403 N MCDONALD ST	SDAC / SBD				X	0
STEVENS APTS. S-90	504 N MCDONALD ST	SDAC / SBD				X	0
STEVENS APTS. S-91	602 N MC DONALD ST	SDAC / SBD				X	0
STEVENS APTS. S-92	710 N MCDONALD ST	SDAC / SBD				X	0
VILLAGE APTS. A	224 N CLEVELAND ST	FA	X		X	X	2
VILLAGE APTS. B	206 N CLEVELEND ST	FA	X		X	X	2
VILLAGE APTS. C	209 N WALNUT ST	FA	X		X	X	2
VILLAGE APTS. D	209 N WALNUT ST	FA	X		X	X	2
VILLAGE APTS. E	209 N CLEVELAND ST	FA	X		X	X	2
VILLAGE APTS. F	209 N CLEVELAND ST	FA	X		X	X	2
WEST APTS. S-80	1802 W SCOTT AVE	SDAC / SBD				X	0
WEST APTS. S-81	1710 W SCOTT AVE	SDAC / SBD				X	0
WEST APTS. S-82	504 N WALNUT ST	SDAC / SBD				X	0
WEST APTS. S-83	508 N WALNUT ST	SDAC / SBD				X	0
WEST APTS. S-84	608 N WALNUT ST	SDAC / SBD				X	0

2023 ANNUAL FIRE SAFETY REPORT ON STUDENT HOUSING FIRE SAFETY SYSTEMS AND FIRE DRILLS

NAME OF FACILITY	ADDRESS	FIRE DETECTION INFORMATION	OTHER FIRE SAFETY FEATURES				
		ALARM SYSTEM	FULL SPRINKLED	PARTIALLY SPRINKLED	STANDPIPE	PORTABLE FIRE EXTINGUISHERS	FIRE DRILLS EACH YEAR
WEST APTS. S-85	1629 W MCELROY RD	SDAC / SBD				X	0
WEST APTS. S-86	1647 W MCELROY RD	SDAC / SBD				X	0
WEST APTS. S-87	1667 W MCELROY RD	SDAC / SBD				X	0
WEST APTS. S-88	709 N MCDONALD ST	SDAC / SBD				X	0
WEST APTS. S-89	605 N MCDONALD ST	SDAC / SBD				X	0
WILLIAMS APTS. N-12	806 N WALNUT ST	SDAC / SBD				X	0
WILLIAMS APTS. N-13	900 N WALNUT ST	SDAC / SBD				X	0
WILLIAMS APTS. N-14	902 N WALNUT ST	SDAC / SBD				X	0
WILLIAMS APTS. N-15	904 W WALNUT ST	SDAC / SBD				X	0
WILLIAMS APTS. N-19	803 N WALNUT ST	SDAC / SBD				X	0
WILLIAMS APTS. N-101	1618 W MCELROY RD	SDAC / SBD				X	0
WILLIAMS APTS. N-102	1636 W MCELROY RD	SDAC / SBD				X	0
WILLIAMS APTS. N-103	1650 W MCELROY RD	SDAC / SBD				X	0
WILLIAMS APTS. N-104	1668 W MCELROY RD	SDAC / SBD				X	0
WILLIAMS APTS. N-105	1682 W MCELROY RD	SDAC / SBD				X	0
CENTERS							
BEEF CATTLE ARENA	5902 W 6TH AVE	FA				X	2
SWINE EDUCATION AND RESEARCH CENTER	2945 W MCELROY RD	SDAC / SBD				X	2





2022 ANNUAL FIRE SAFETY REPORT ON STUDENT HOUSING FIRE SAFETY SYSTEMS AND FIRE DRILLS

FA = Proprietary Fire Alarm and Detection System monitored by OSU PD **FA(P)** = Fire Alarm and Detection System monitored by a private company other than OSU
SDAC = Hard-wired smoke alarms **SBD** = Stand Alone Battery Powered Smoke Alarms

Facilities are shown alphabetically by: Halls, Suites, Commons, Apartments, and Centers.

NAME OF FACILITY	ADDRESS	FIRE DETECTION INFORMATION	OTHER FIRE SAFETY FEATURES				
		ALARM SYSTEM	FULL SPRINKLED	PARTIALLY SPRINKLED	STANDPIPE	PORTABLE FIRE EXTINGUISHERS	FIRE DRILLS EACH YEAR
HALLS							
ALLEN HALL	112 W SCOTT AVE	FA	X		X	X	2
BOOKER HALL	1205 W MCELROY RD	FA	X		X	X	2
BOST HALL	610 N MONROE ST	FA	X			X	2
CARREKER HALL EAST	1210 W MCELROY RD	FA	X			X	2
CARREKER HALL WEST	1218 W MCELROY RD	FA	X			X	2
DAVIS HALL	1225 W MCELROY RD	FA	X			X	2
EAST BENNETT HALL	417 N KNOBLOCK	SDB / FA	X		X	X	2
FRIEND HALL	320 N MCFARLAND ST	FA	X			X	2
HELMS HALL	2610 W MCELROY RD	FA	X			X	2
IBA HALL	1318 W FARM RD	SDB / FA	X		X	X	2
KAMM HALL	320 N MCFARLAND ST	FA	X			X	2
MCPHERSON HALL	925 N GARFIELD ST	FA	X			X	2
MORSANI HALL	1205 W MCELROY RD	FA	X			X	2
PARKER HALL	1212 PARKER LN	FA	X		X	X	2
PAYNE-ELLIS HALL	1310 W MCELROY RD	FA	X			X	2
PETERSON HALL	320 N MCFARLAND ST	FA	X			X	2
SITLINGTON HALL	1215 W MCELROY RD	FA	X			X	2
SMITH HALL	1205 W MCELROY RD	FA	X			X	2
STINCHCOMB HALL	1205 W MCELROY RD	FA	X		X	X	2
STOUT HALL	123 STOUT LN	FA	X		X	X	2
WENTZ HALL	1313 W DRUMMOND LN	FA	X		X	X	2
WEST BENNETT HALL	417 N KNOBLOCK	FA	X		X	X	2
YOUNG HALL	612 N MONROE ST	FA	X			X	2
ZINK HALL	112 W SCOTT AVE	FA	X		X	X	2

2022 ANNUAL FIRE SAFETY REPORT ON STUDENT HOUSING FIRE SAFETY SYSTEMS AND FIRE DRILLS

2 of 4

NAME OF FACILITY	ADDRESS	FIRE DETECTION INFORMATION	OTHER FIRE SAFETY FEATURES				
		ALARM SYSTEM	FULL SPRINKLED	PARTIALLY SPRINKLED	STANDPIPE	PORTABLE FIRE EXTINGUISHERS	FIRE DRILLS EACH YEAR
SUITES							
JONES SUITES	102 S CLEVELEND ST	FA	X		X	X	2
PATCHIN SUITES	102 S CLEVELEND ST	FA	X		X	X	2
COMMONS							
UNIVERSITY COMMONS NORTH	1340 W HALL OF FAME AVE	FA	X		X	X	2
UNIVERSITY COMMONS SOUTH	1400 W HALL OF FAME AVE	FA	X		X	X	2
UNIVERSITY COMMONS WEST	1320 W HALL OF FAME AVE	FA	X		X	X	2
APARTMENTS							
BRUMLEY APTS. #120	220 N WALNUT ST	SDB					0
BRUMLEY APTS. #121	1514 W MILLER AVE	SDB					0
BRUMLEY APTS. #122	1604 W MILLER AVE	SDB					0
BRUMLEY APTS. #123	219 N ORCHARD ST	SDB					0
BRUMLEY APTS. #124	1605 W FARM RD	SDB					0
BRUMLEY APTS. #125	1515 W FARM RD	SDB					0
DEMAREE APTS. S-36	1325 W MCELROY RD	SDAC / SBD				X	0
DEMAREE APTS. S-37	1405 W MCELROY RD	SDAC / SBD				X	0
DEMAREE APTS. S-38	700 N GARFIELD ST	SDAC / SBD				X	0
DEMAREE APTS. S-39	615 N GARFIELD ST	SDAC / SBD				X	0
DEMAREE APTS. S-40	608 N GARFIELD ST	SDAC / SBD				X	0
DEMAREE APTS. S-41	604 N GARFIELD ST	SDAC / SBD				X	0
DEMAREE APTS. S-42	504 N GARFIELD ST	SDAC / SBD				X	0
PROSSER APTS. N-16	1502 W WILLHAM AVE	SDAC / SBD				X	0
PROSSER APTS. N-17	1500 W WILLHAM AVE	SDAC / SBD				X	0
PROSSER APTS. N-18	1503 W WILLHAM AVE	SDAC / SBD				X	0
PROSSER APTS. N-20	1506 W MCELROY RD	SDAC / SBD				X	0
PROSSER APTS. N-21	1501 W WILLHAM AVE	SDAC / SBD				X	0
PROSSER APTS. N-22	1404 W WILLHAM AVE	SDAC / SBD				X	0

2022 ANNUAL FIRE SAFETY REPORT ON STUDENT HOUSING FIRE SAFETY SYSTEMS AND FIRE DRILLS

3 of 4

NAME OF FACILITY	ADDRESS	FIRE DETECTION INFORMATION	OTHER FIRE SAFETY FEATURES				
		ALARM SYSTEM	FULL SPRINKLED	PARTIALLY SPRINKLED	STANDPIPE	PORTABLE FIRE EXTINGUISHERS	FIRE DRILLS EACH YEAR
PROSSER APTS. N-23	1402 W WILLHAM AVE	SDAC / SBD				X	0
PROSSER APTS. N-24	1405 W WILLHAM AVE	SDAC / SBD				X	0
PROSSER APTS. N-25	1500 W MCELROY RD	SDAC / SBD				X	0
PROSSER APTS. N-26	802 N GARFIELD ST	SDAC / SBD				X	0
PROSSER APTS. N-27	1401 W WILLHAM AVE	SDAC / SBD				X	0
PROSSER APTS. N-28	902 N GARFIELD ST	SDAC / SBD				X	0
STEVENS APTS. S-70	401 N MCDONALD ST	SDAC / SBD				X	0
STEVENS APTS. S-71	402 N WALNUT ST	SDAC / SBD				X	0
STEVENS APTS. S-72	404 N WALNUT ST	SDAC / SBD				X	0
STEVENS APTS. S-73	1707 W SCOTT AVE	SDAC / SBD				X	0
STEVENS APTS. S-74	1711 W SCOTT AVE	SDAC / SBD				X	0
STEVENS APTS. S-75	411 N MCDONALD ST	SDAC / SBD				X	0
STEVENS APTS. S-76	403 N MCDONALD ST	SDAC / SBD				X	0
STEVENS APTS. S-90	504 N MCDONALD ST	SDAC / SBD				X	0
STEVENS APTS. S-91	602 N MC DONALD ST	SDAC / SBD				X	0
STEVENS APTS. S-92	710 N MCDONALD ST	SDAC / SBD				X	0
VILLAGE APTS. A	224 N CLEVELAND ST	FA	X		X	X	2
VILLAGE APTS. B	206 N CLEVELEND ST	FA	X		X	X	2
VILLAGE APTS. C	209 N WALNUT ST	FA	X		X	X	2
VILLAGE APTS. D	209 N WALNUT ST	FA	X		X	X	2
VILLAGE APTS. E	209 N CLEVELAND ST	FA	X		X	X	2
VILLAGE APTS. F	209 N CLEVELAND ST	FA	X		X	X	2
WEST APTS. S-80	1802 W SCOTT AVE	SDAC / SBD				X	0
WEST APTS. S-81	1710 W SCOTT AVE	SDAC / SBD				X	0
WEST APTS. S-82	504 N WALNUT ST	SDAC / SBD				X	0
WEST APTS. S-83	508 N WALNUT ST	SDAC / SBD				X	0
WEST APTS. S-84	608 N WALNUT ST	SDAC / SBD				X	0



2022 ANNUAL FIRE SAFETY REPORT ON STUDENT HOUSING FIRE SAFETY SYSTEMS AND FIRE DRILLS

NAME OF FACILITY	ADDRESS	FIRE DETECTION INFORMATION	OTHER FIRE SAFETY FEATURES				
		ALARM SYSTEM	FULL SPRINKLED	PARTIALLY SPRINKLED	STANDPIPE	PORTABLE FIRE EXTINGUISHERS	FIRE DRILLS EACH YEAR
WEST APTS. S-85	1629 W MCELROY RD	SDAC / SBD				X	0
WEST APTS. S-86	1647 W MCELROY RD	SDAC / SBD				X	0
WEST APTS. S-87	1667 W MCELROY RD	SDAC / SBD				X	0
WEST APTS. S-88	709 N MCDONALD ST	SDAC / SBD				X	0
WEST APTS. S-89	605 N MCDONALD ST	SDAC / SBD				X	0
WILLIAMS APTS. N-12	806 N WALNUT ST	SDAC / SBD				X	0
WILLIAMS APTS. N-13	900 N WALNUT ST	SDAC / SBD				X	0
WILLIAMS APTS. N-14	902 N WALNUT ST	SDAC / SBD				X	0
WILLIAMS APTS. N-15	904 W WALNUT ST	SDAC / SBD				X	0
WILLIAMS APTS. N-19	803 N WALNUT ST	SDAC / SBD				X	0
WILLIAMS APTS. N-101	1618 W MCELROY RD	SDAC / SBD				X	0
WILLIAMS APTS. N-102	1636 W MCELROY RD	SDAC / SBD				X	0
WILLIAMS APTS. N-103	1650 W MCELROY RD	SDAC / SBD				X	0
WILLIAMS APTS. N-104	1668 W MCELROY RD	SDAC / SBD				X	0
WILLIAMS APTS. N-105	1682 W MCELROY RD	SDAC / SBD				X	0
CENTERS							
BEEF CATTLE ARENA	5902 W 6TH AVE	FA				X	2
SWINE EDUCATION AND RESEARCH CENTER	2945 W MCELROY RD	SDAC / SBD				X	2



2021 ANNUAL FIRE SAFETY REPORT ON STUDENT HOUSING FIRE SAFETY SYSTEMS AND FIRE DRILLS

FA = Proprietary Fire Alarm and Detection System monitored by OSU PD **FA(P)** = Fire Alarm and Detection System monitored by a private company other than OSU
SDAC = Hard-wired smoke alarms **SBD** = Stand Alone Battery Powered Smoke Alarms

Facilities are shown alphabetically by: Halls, Suites, Commons, Apartments, and Centers.

NAME OF FACILITY	ADDRESS	FIRE DETECTION INFORMATION	OTHER FIRE SAFETY FEATURES				
		ALARM SYSTEM	FULL SPRINKLED	PARTIALLY SPRINKLED	STANDPIPE	PORTABLE FIRE EXTINGUISHERS	FIRE DRILLS EACH YEAR
HALLS							
ALLEN HALL	112 W SCOTT AVE	FA	X		X	X	2
BOOKER HALL	1205 W MCELROY RD	FA	X		X	X	2
BOST HALL	610 N MONROE ST	FA	X			X	2
CARREKER HALL EAST	1210 W MCELROY RD	FA	X			X	2
CARREKER HALL WEST	1218 W MCELROY RD	FA	X			X	2
DAVIS HALL	1225 W MCELROY RD	FA	X			X	2
EAST BENNETT HALL	417 N KNOBLOCK	SDB / FA	X		X	X	2
FRIEND HALL	320 N MCFARLAND ST	FA	X			X	2
HELMS HALL	2610 W MCELROY RD	FA	X			X	2
IBA HALL	1318 W FARM RD	SDB / FA	X		X	X	2
KAMM HALL	320 N MCFARLAND ST	FA	X			X	2
MCPHERSON HALL	925 N GARFIELD ST	FA	X			X	2
MORSANI HALL	1205 W MCELROY RD	FA	X			X	2
PARKER HALL	1212 PARKER LN	FA	X		X	X	2
PAYNE-ELLIS HALL	1310 W MCELROY RD	FA	X			X	2
PETERSON HALL	320 N MCFARLAND ST	FA	X			X	2
SITLINGTON HALL	1215 W MCELROY RD	FA	X			X	2
SMITH HALL	1205 W MCELROY RD	FA	X			X	2
STINCHCOMB HALL	1205 W MCELROY RD	FA	X		X	X	2
STOUT HALL	123 STOUT LN	FA	X		X	X	2
WENTZ HALL	1313 W DRUMMOND LN	FA	X		X	X	2
WEST BENNETT HALL	417 N KNOBLOCK	FA	X		X	X	2
YOUNG HALL	612 N MONROE ST	FA	X			X	2
ZINK HALL	112 W SCOTT AVE	FA	X		X	X	2

2021 ANNUAL FIRE SAFETY REPORT ON STUDENT HOUSING FIRE SAFETY SYSTEMS AND FIRE DRILLS

2 of 4

NAME OF FACILITY	ADDRESS	FIRE DETECTION INFORMATION	OTHER FIRE SAFETY FEATURES				
		ALARM SYSTEM	FULL SPRINKLED	PARTIALLY SPRINKLED	STANDPIPE	PORTABLE FIRE EXTINGUISHERS	FIRE DRILLS EACH YEAR
SUITES							
JONES SUITES	102 S CLEVELEND ST	FA	X		X	X	2
PATCHIN SUITES	102 S CLEVELEND ST	FA	X		X	X	2
COMMONS							
UNIVERSITY COMMONS NORTH	1340 W HALL OF FAME AVE	FA	X		X	X	2
UNIVERSITY COMMONS SOUTH	1400 W HALL OF FAME AVE	FA	X		X	X	2
UNIVERSITY COMMONS WEST	1320 W HALL OF FAME AVE	FA	X		X	X	2
APARTMENTS							
BRUMLEY APTS. #120	220 N WALNUT ST	SDB					0
BRUMLEY APTS. #121	1514 W MILLER AVE	SDB					0
BRUMLEY APTS. #122	1604 W MILLER AVE	SDB					0
BRUMLEY APTS. #123	219 N ORCHARD ST	SDB					0
BRUMLEY APTS. #124	1605 W FARM RD	SDB					0
BRUMLEY APTS. #125	1515 W FARM RD	SDB					0
DEMAREE APTS. S-36	1325 W MCELROY RD	SDAC / SBD				X	0
DEMAREE APTS. S-37	1405 W MCELROY RD	SDAC / SBD				X	0
DEMAREE APTS. S-38	700 N GARFIELD ST	SDAC / SBD				X	0
DEMAREE APTS. S-39	615 N GARFIELD ST	SDAC / SBD				X	0
DEMAREE APTS. S-40	608 N GARFIELD ST	SDAC / SBD				X	0
DEMAREE APTS. S-41	604 N GARFIELD ST	SDAC / SBD				X	0
DEMAREE APTS. S-42	504 N GARFIELD ST	SDAC / SBD				X	0
PROSSER APTS. N-16	1502 W WILLHAM AVE	SDAC / SBD				X	0
PROSSER APTS. N-17	1500 W WILLHAM AVE	SDAC / SBD				X	0
PROSSER APTS. N-18	1503 W WILLHAM AVE	SDAC / SBD				X	0
PROSSER APTS. N-20	1506 W MCELROY RD	SDAC / SBD				X	0
PROSSER APTS. N-21	1501 W WILLHAM AVE	SDAC / SBD				X	0
PROSSER APTS. N-22	1404 W WILLHAM AVE	SDAC / SBD				X	0

2021 ANNUAL FIRE SAFETY REPORT ON STUDENT HOUSING FIRE SAFETY SYSTEMS AND FIRE DRILLS

3 of 4

NAME OF FACILITY	ADDRESS	FIRE DETECTION INFORMATION	OTHER FIRE SAFETY FEATURES				
		ALARM SYSTEM	FULL SPRINKLED	PARTIALLY SPRINKLED	STANDPIPE	PORTABLE FIRE EXTINGUISHERS	FIRE DRILLS EACH YEAR
PROSSER APTS. N-23	1402 W WILLHAM AVE	SDAC / SBD				X	0
PROSSER APTS. N-24	1405 W WILLHAM AVE	SDAC / SBD				X	0
PROSSER APTS. N-25	1500 W MCELROY RD	SDAC / SBD				X	0
PROSSER APTS. N-26	802 N GARFIELD ST	SDAC / SBD				X	0
PROSSER APTS. N-27	1401 W WILLHAM AVE	SDAC / SBD				X	0
PROSSER APTS. N-28	902 N GARFIELD ST	SDAC / SBD				X	0
STEVENS APTS. S-70	401 N MCDONALD ST	SDAC / SBD				X	0
STEVENS APTS. S-71	402 N WALNUT ST	SDAC / SBD				X	0
STEVENS APTS. S-72	404 N WALNUT ST	SDAC / SBD				X	0
STEVENS APTS. S-73	1707 W SCOTT AVE	SDAC / SBD				X	0
STEVENS APTS. S-74	1711 W SCOTT AVE	SDAC / SBD				X	0
STEVENS APTS. S-75	411 N MCDONALD ST	SDAC / SBD				X	0
STEVENS APTS. S-76	403 N MCDONALD ST	SDAC / SBD				X	0
STEVENS APTS. S-90	504 N MCDONALD ST	SDAC / SBD				X	0
STEVENS APTS. S-91	602 N MC DONALD ST	SDAC / SBD				X	0
STEVENS APTS. S-92	710 N MCDONALD ST	SDAC / SBD				X	0
VILLAGE APTS. A	224 N CLEVELAND ST	FA	X		X	X	2
VILLAGE APTS. B	206 N CLEVELEND ST	FA	X		X	X	2
VILLAGE APTS. C	209 N WALNUT ST	FA	X		X	X	2
VILLAGE APTS. D	209 N WALNUT ST	FA	X		X	X	2
VILLAGE APTS. E	209 N CLEVELAND ST	FA	X		X	X	2
VILLAGE APTS. F	209 N CLEVELAND ST	FA	X		X	X	2
WEST APTS. S-80	1802 W SCOTT AVE	SDAC / SBD				X	0
WEST APTS. S-81	1710 W SCOTT AVE	SDAC / SBD				X	0
WEST APTS. S-82	504 N WALNUT ST	SDAC / SBD				X	0
WEST APTS. S-83	508 N WALNUT ST	SDAC / SBD				X	0
WEST APTS. S-84	608 N WALNUT ST	SDAC / SBD				X	0

2021 ANNUAL FIRE SAFETY REPORT ON STUDENT HOUSING FIRE SAFETY SYSTEMS AND FIRE DRILLS

NAME OF FACILITY	ADDRESS	FIRE DETECTION INFORMATION	OTHER FIRE SAFETY FEATURES				
		ALARM SYSTEM	FULL SPRINKLED	PARTIALLY SPRINKLED	STANDPIPE	PORTABLE FIRE EXTINGUISHERS	FIRE DRILLS EACH YEAR
WEST APTS. S-85	1629 W MCELROY RD	SDAC / SBD				X	0
WEST APTS. S-86	1647 W MCELROY RD	SDAC / SBD				X	0
WEST APTS. S-87	1667 W MCELROY RD	SDAC / SBD				X	0
WEST APTS. S-88	709 N MCDONALD ST	SDAC / SBD				X	0
WEST APTS. S-89	605 N MCDONALD ST	SDAC / SBD				X	0
WILLIAMS APTS. N-12	806 N WALNUT ST	SDAC / SBD				X	0
WILLIAMS APTS. N-13	900 N WALNUT ST	SDAC / SBD				X	0
WILLIAMS APTS. N-14	902 N WALNUT ST	SDAC / SBD				X	0
WILLIAMS APTS. N-15	904 W WALNUT ST	SDAC / SBD				X	0
WILLIAMS APTS. N-19	803 N WALNUT ST	SDAC / SBD				X	0
WILLIAMS APTS. N-101	1618 W MCELROY RD	SDAC / SBD				X	0
WILLIAMS APTS. N-102	1636 W MCELROY RD	SDAC / SBD				X	0
WILLIAMS APTS. N-103	1650 W MCELROY RD	SDAC / SBD				X	0
WILLIAMS APTS. N-104	1668 W MCELROY RD	SDAC / SBD				X	0
WILLIAMS APTS. N-105	1682 W MCELROY RD	SDAC / SBD				X	0
CENTERS							
BEEF CATTLE ARENA	5902 W 6TH AVE	FA				X	2
SWINE EDUCATION AND RESEARCH CENTER	2945 W MCELROY RD	SDAC / SBD				X	2





OTHER RESOURCES

OSU CAMPUS RESOURCES

Blue Emergency Phones.....	911
Call SAM.....	1-855-225-2SAM (2726)
Community Policing Programs.....	405-744-4242
Crime Prevention Programs.....	405-744-5191
Crime Stoppers.....	405-744-Tips (405-744-8477)
Emergency (Police, Fire, Ambulance).....	911
Emergency Operations Center.....	405-744-4362 or 405-744-6523
Environmental Health and Safety.....	405-744-7241
Lost and Found.....	405-744-6527
Office of Equal Opportunity and Title IX Coordinator.....	405-744-1156
OSU Public Safety Web Page.....	police.okstate.edu
OSU Public Safety Facebook.....	facebook.com/okstatepd
OSU Public Safety Twitter.....	@OkstatePD
Police Non-Emergency (Campus Only).....	311 or 405-744-6523
Psychological Services Center.....	405-744-5975
Sexual Assault Victim Advocates.....	405-564-2129
Student Conduct.....	405-744-5470
Student Accessibility Services.....	405-744-7116
University Counseling Services.....	405-744-5472
University Health Services.....	405-744-7665

CITY OF STILLWATER RESOURCES

Emergency (Police, Fire, Ambulance).....	911
Stillwater Police Non-Emergency.....	405-372-4171
Payne County Sheriff's Department.....	405-372-4522
Payne County District Attorney.....	405-372-4883
Reach-Out Hotline (Suicide Prevention).....	1-800-522-9054
Stillwater Domestic Violence Center, Wings of Hope.....	405-377-2344 (24-Hour Crisis Line)..... 405-624-3020
Stillwater Medical Center.....	405-372-1480





Oklahoma State University

safety.okstate.edu

Oklahoma State University, in compliance with Title VI and VII of the Civil Rights Act of 1964, Executive Order 11246 as amended, and Title IX of the Education Amendments of 1972 (Higher Education Act), the Americans with Disabilities Act of 1990, and other federal and state laws and regulations, does not discriminate on the basis of race, color, national origin, genetic information, sex, age, sexual orientation, gender identity, religion, disability, or status as a veteran, in any of its policies, practices or procedures. This provision includes, but is not limited to admissions, employment, financial aid, and educational services. The Director of Equal Opportunity, 401 General Academic Building, OSU, Stillwater, OK 74078-1035; Phone 405-744-5371; email: eeo@okstate.edu has been designated to handle inquiries regarding non-discrimination policies. Any person (student, faculty, or staff) who believes that discriminatory practices have been engaged in based on gender may discuss his or her concerns and file informal or formal complaints of possible violations of Title IX with OSU's Title IX Coordinator 405-744-7607.