

# FactBook



2015-2016



**NORTHERN**  
Oklahoma College  
TONKAWA | ENID | STILLWATER

Life changing.

## Introduction

The Northern Oklahoma College Fact Book is a collection of institutional data put together to provide information to those who make decisions, write grants, need institutional data for accreditation purposes, and to the general public interested in the institution. The Fact Book is intended to be a snapshot of the collective institution, including data from all three of Northern’s locations with data and information updated in July of the year reported. The Fact Book, now in its fourth year, is an annual publication that is intended to grow into a longitudinal study of the institution which gives the reader a history of Northern in previous years.

The data presented in the Fact Book was obtained either from certified data sources, such as IPEDs, or from campus databases. All years, unless otherwise indicated, follow the IPED reporting schedule of summer, fall, and spring for that academic year. Thus any year containing data for AY – 2015 includes summer 2015, fall of 2015 and spring of 2016. If the data is collected from a source other than those previously indicated, the source will be reported with the data. Realizing there may be gaps in information, it is requested that Fact Book readers provide feedback so that the future publications may include that information. If any questions arise, please contact the Office of Institutional Research.

Prepared by  
Kathleen Otto  
Director of Institutional Research and Assessment  
July 2016

This publication was issued by Northern Oklahoma College President’s Office. 100 copies were prepared and printed in July 2016 at a cost of \$617.96.

This institution in compliance with Title VI of the Civil Rights Act of 1964, Executive Order 11246 as amended, Title IX of the Education Amendments of 1972 and other Federal laws and regulations, does not discriminate on the basis of race, color, national origin, sex, age, religion, handicap or status as a veteran in any of its policies, practices or procedures. This includes, but is not limited to, admission, employment, financial aid and educational services.

## Table of Contents

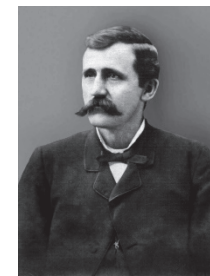
<b>About NOC</b>	History	4
	Mission, Vision, Core Values	6
	Strategic Plan	6
	Honors and Awards	7
	Board of Regents	8
	Letter from the President	9
	Organizational Chart	10
	Administrative Council	10
	Grants	13
	Advisory Board Members	15
	Community Support/Partnerships	
	· Academic Partners	17
	· Articulation Agreements	17
	· Career Technology Partners	17
	· Sponsored Programs	17
	· Foundation Board Members	18
<b>Academics</b>	Contact Information	20
	· State Map	21
	· Tonkawa Map	22
	· Enid Map	23
	· Stillwater Map	24
	Programs of Study	
	· Associate in Arts	25
	· Associate in Science	25
	· Associate in Applied Science	25
	Accreditations	26
	Honor Societies	26
	High-Impact Strategies	26
<b>Students</b>	Student Profiles	
	· Gender	28
	· Age	28
	· Race/ethnicity	29
	· Residence	30
	· Housing	31
	Enrollment	
	· Student Enrollment	32
	· Enrollment in Developmental Courses	32
	· Enrollment in Distance Education	32
	Courses	33
	Graduation/Completion	
	· Degrees Awarded/Retention	33
	· Graduation Rates	33



	· Reverse Transfer	33
	Tuition & Fees	35
	Room & Board	38
	Library Services	39
	Financial Aid	
	· Profiles	40
	· Grant Aid	40
	· Loans	41
	· Aid by Income	41
	· Default Rates	41
<b>Faculty/Staff</b>	Profiles	43
	Faculty Demographics	43
	· Full-time Faculty	43
	· Full-time Staff	44
	· Part-time Faculty	44
	· Part-time Staff	44
<b>Finances</b>	Core Revenues	46
	Core Expenses	47
	Assets	48
<b>Campus Safety</b>	Criminal Offenses	50
	Disciplinary Actions	51
	Hate Crimes	51
	Arrests	52
	Fire Statistics	52
<b>NOC Location Information</b>	Tonkawa	55
	Enid	58
	Stillwater	61
	University Center Ponca City	66
	Education Centers	69
	Online	71
<b>Accredited Programs</b>	Nursing	75
	Business	77
<b>Studies of Other Student Population</b>		
	International Students	80
	Concurrent Students	82
	Enid Athletes	84
	Tonkawa Athletes	85
<b>Year-End Highlights</b>		89
<b>Data Dictionary</b>		99
<b>Additional Resources</b>		107

## About NOC

### History of NOC



Through the efforts of the Honorable James H. Wilkin, on March 1, 1901, the Oklahoma Territorial Legislature passed an act appropriating money to establish University Preparatory School at Tonkawa. Wilkin also obtained an endowment of land for the school. Consequently, Central Hall was constructed, a faculty employed, and other essentials of an educational institution provided. In September 1902, the doors of the new school swung open to prospective students. Two hundred and twenty-seven young men and women enrolled; thus opened the colorful history of one of Oklahoma's most important and picturesque educational institutions.

As the curriculum expanded and the enrollment increased, new equipment and other facilities became necessary. An act of Congress dated June 2, 1906, provided for the donation to the school of a section of land adjoining the city of Tonkawa. Proceeds from the sale of this land were to be used to provide additional buildings. A similar act of 1909 granted another tract of land for the same purpose. Harold Hall and Foster-Piper Fieldhouse were erected and paid for with the funds secured from the sale of these lands.

The college department was established in 1921, and the institution became a fully-accredited junior college. By an act of legislature in 1941, the name was changed to Northern Oklahoma Junior College. Further changes were made by the state legislature in 1965 with the passage of the Higher Education Code. This new statement of law changed the institution's official name to Northern Oklahoma College. Its three-man Board of Regents was expanded to five and given added authority and freedom in conducting institutional affairs.

In June 1999, Northern purchased the grounds and buildings of the Phillips University campus in Enid. Phillips University, a private institution established in 1907 by the Disciples of Christ, had closed its doors in August 1998. The purchase of the campus allowed Northern to expand its services to its Enid students and to provide for growth of its academic, student and community programs.

In 2001, Northern Oklahoma College celebrated the centennial anniversary of its founding, and, with the beginning of the fall 2002 semester, entered its second hundred years of providing quality education to students. The history of the institution is unique in the annals of higher education.

In August 2003, Northern joined in a partnership with Oklahoma State University to expand educational opportunities for college bound students in Oklahoma. The partnership allowed Northern to expand its services to its Stillwater students.



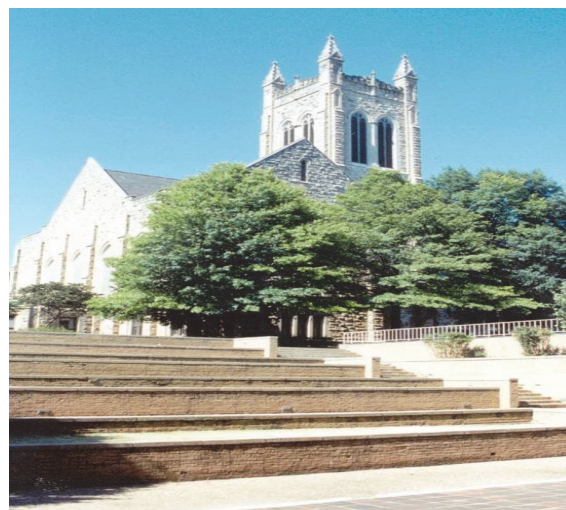


### **Tonkawa**

The Tonkawa campus, established in 1901, serves as the administrative center for Northern. All program oversight in academic, financial, student service, personnel, development, physical plant, and information technology is housed in Tonkawa. Some 2,200 students attend class on site, by ITV, or via online. Offering over 20 distinct degree paths with over 40 degree options and an array of courses, Northern distinguishes itself as a leading community college in Oklahoma.

### **Enid**

The Enid site was established in 1999 in conjunction with the Oklahoma State Regents for Higher Education (OSRHE) and the City of Enid. This site has grown in offering multiple two-year liberal arts degree programs to some 1,200 students each semester. The Enid site continues to expand its faculty, curriculum, and numerous clubs and activities.



### **Stillwater**

The Stillwater site, established in 2003, serves multiple missions to area students. Primarily a Gateway Program, the Stillwater site serves students who would otherwise not be admitted to Oklahoma State University. The site, however, also admits students seeking general education courses that transfer to other comprehensive colleges and universities. Northern Stillwater admits approximately 300 new students each fall and spring semester, serving some 1,700 students.



### **Mission Statement:**

Northern Oklahoma College, the State's oldest community college, is a multi-campus, land-grant institution that provides high quality, accessible, and affordable educational opportunities and services which create life-changing experiences and develop students as effective learners and leaders within their communities in a connected, ever-changing world.

### **Vision Statement:**

Northern Oklahoma College will be recognized as a model institution and leader in academic quality and cultural enrichment, promoting student success, collaborative learning, creative and forward thinking, and community responsiveness.

### **Core Values:**

#### *Personalized Education:*

We believe in providing individualized services that lead our students to achieving their academic goals in a welcoming and safe environment.

We believe in providing support to students in and out of the classroom so that they receive a full college experience with diverse opportunities.

#### *Community and Civic Engagement:*

We believe that educated citizens are necessary for a healthy, democratic society, and that free and open expression and an appreciation for diversity are cornerstones of higher education.

We believe in economic and environmental sustainability and the importance of enriching the intellectual, artistic, economic, and social resources of our communities.

#### *Continuous Improvement:*

We believe in the inherent value of intellectual pursuit for both personal and professional growth, as well as in the need to prepare students for 21st century professions.

We believe that a knowledge-centered institution is vital to a knowledge-based economy, and we measure our success against national models and standards of excellence.

### **2013-2018 Strategic Plan**

Goal 1A: Enhance the quality of life for students.

Goal 1B: Enhance recruitment efforts as well as retention and graduation rates.

Goal 2: Cultivate and maintain partnerships to inform and improve academic decisions, enrich student experiences, and support regional needs.

Goal 3: Upgrade facilities for quality and efficiency to enhance the student experience.

Goal 4: Enhance professional development opportunities and quality working conditions for NOC employees.

Goal 5: Diversify and increase revenue streams

Link to Strategic Plan - <http://www.noc.edu/strategic-plan>



## Honors/Awards



**The Aspen Institute** - The Washington-based Aspen Institute has selected Northern Oklahoma College (NOC) three times as one of the top 150 community colleges in the nation and the only one in Oklahoma, in 2014.

In round one of the Aspen program competition process, the top 150 community colleges, out of 1,005 potential candidates selected by an expert panel, are identified through an assessment of institutional performance, improvement, and equity on student retention and completion measures.

When Warner announced the top 150, he said, "Community colleges have tremendous power to change lives, and their success will increasingly define our nation's economic strength and the potential for social mobility for every American. This competition is designed to spotlight the excellent work being done in the most effective community colleges, those that best help students obtain meaningful, high-quality education and training for competitive-wage jobs after college. We hope it will raise the bar and provide a roadmap for community colleges nationwide."

President Cheryl Evans said, "I am very proud that Northern has three times been selected as one of the top community colleges in the nation by Aspen and I believe that this is external validation of the dedication of our faculty and staff members who work every day to create life-changing learning experiences for NOC students. It also shows that our students are working hard to achieve their educational goals. I'm especially excited that the criteria evaluated is similar to Oklahoma's Complete College America goals, NOC's Higher Learning Quality Initiative and Northern's strategic plan goals. This recognition tells us that our planning efforts are on the right track."

**SmartAssets-** SmartAssets looked at close to seven hundred public community colleges across the country in order to find the best of the best, and Northern Oklahoma College came in at #2! The college ranked high in the list according to the following factors: the cost to attend the college, the ratio of starting salary to the cost of education, the percentage of students who enroll at the community college, graduate and then go on to transfer to a four-year institution. The chart below posted in the 2014 article from SmartAssets website shows Northern Oklahoma College's rank compared to the other top ten community colleges.

According to SmartAssets 2014 publication, "Northern Oklahoma graduates have an even better rate of starting earnings to college costs than Coastline graduates do, at 187 percent. This school, which is between Wichita and Oklahoma City, also has about a ten percent greater graduation and transfer rate than the national average."

Rank	College and Location	Average Starting Salary to College Cost Ratio	Graduation and Transfer Rate	In-State Tuition	College Index
1	Coastline Community College (Fountain Valley, CA)	1.748	40.20%	\$1,136.00	100.0
2	Northern Oklahoma College (Tonkawa, OK)	1.878	45.70%	\$2,845.00	99.8
3	Cochise College (Douglas, AZ)	1.635	46.00%	\$1,680.00	97.2
4	Moorpark College (Moorpark, CA)	1.413	47.20%	\$1,338.00	92.1
5	Rend Lake College (Ina, IL)	1.334	66.80%	\$4,320.00	87.7
6	North Central Missouri College (Trenton, MO)	1.451	47.00%	\$2,712.00	86.7
7	Meridian Community College (Meridian, MS)	1.028	61.70%	\$2,230.00	84.0
8	Tallahassee Community College (Tallahassee, FL)	1.168	52.30%	\$2,017.00	83.8
9	Fort Scott Community College (Fort Scott, KS)	1.054	60.40%	\$2,580.00	82.4
10	Pratt Community College (Pratt, KS)	1.228	54.00%	\$3,012.00	82.2

Link to SmartAssets article: <https://smartasset.com/student-loans/the-top-ten-community-colleges-in-the-country>

## Board of Regents\*



**TOM DUGGER**, CPA (Stillwater, OK), Chair, is a Certified Public Accountant with over forty years of experience in audit, tax, and corporate accounting. He graduated from Oklahoma State University where he was inducted as a member of the honorary scholastic fraternity Phi Kappa Phi and was also a Chi Chapter member of Beta Alpha Psi. His firm, Dugger & Co., CPA's PC was established in 1986. Regent Dugger was appointed by Gov. Mary Fallin in 2014 to serve an unexpired term ending June 30, 2017, succeeding Rex Horning.



**JEFFREY T. COWAN** (Ponca City, OK), Vice-Chair, is President of RCB Bank, Ponca City. He received a Bachelor of Science degree in Business Administration with emphasis in Economics and Marketing from Pittsburg State University. Regent Cowan was appointed by Gov. Mary Fallin in 2011 to serve an unexpired term ending June 30, 2014. He was reappointed by Gov. Mary Fallin in 2014 to his five-year term as a member of the Northern Oklahoma Board of Regents. His term expires in June 2019.



**STAN BROWNLEE** (Enid, OK), Secretary, is a retired Enid businessman. After earning an accounting degree from University of Central Oklahoma, Stan Brownlee started his career as a public accountant in 1968. He worked over three decades in public accounting as a partner in Randall, Brownlee, Donehue and Company, then with BKD after a merger in 1996. After retiring in 2002, he was a personal asset manager for Harold Hamm until 2011. Regent Brownlee works with many area nonprofit organizations, serving as a mentor for local children since 1987. He was appointed by Gov. Mary Fallin in 2015.



**LINDA J. BROWN** (Ponca City, OK), Member, is Vice-President of Evans & Associates Enterprises, Inc. in Ponca City. Regent Brown attended Northwestern Oklahoma State University. Regent Brown was appointed by Gov. Frank Keating in 2002 to serve an unexpired term ending June 30, 2003, succeeding Bill O'Conner. She was appointed by Gov. Brad Henry in 2003, reappointed in 2008 to her second five-year term and reappointed by Gov. Mary Fallin in 2013 to a third five-year term as a member of the Northern Oklahoma College Board of Regents. Her term expires in June 2018.



**CHAD DILLINGHAM** (Enid, OK), *Member*, is President and Co-Owner of Dillingham Insurance in Enid. Regent Dillingham is also actively involved in the ownership and management of their family ranching operations north of Nash. He attended Kansas University with studies in Business Communications and Personnel Administration. Regent Dillingham was appointed by Gov. Mary Fallin in 2016 to a five-year term as a member of the Northern Oklahoma Board of Regents.

\*Updated on July 2015

## President of NOC



Our outstanding institution creates opportunities which shape and transform the lives of its nearly 5,000 students. NOC's influence has not gone unnoticed; for three consecutive times the non-profit Aspen institute in Washington, DC has ranked Northern in the top ten percent of community colleges nationally. In 2014, NOC distinguished itself for a second time as the only Oklahoma institution ranked with this honor.

Northern offers access to an affordable, quality education. Our committed faculty and staff members accommodate individual student needs with a personal touch. Teachers advise individuals to achieve their specific career goals. NOC fosters a warm academic environment described by students as an inviting family atmosphere.

The talent, dedication and passion of our students, faculty, and staff instill our locations in Tonkawa, Enid and Stillwater with distinct character. NOC offers the place, price, and programming to fit a broad array of life situations. We effectively serve many different types of individuals. Our diverse student body is comprised of young people fresh from high school, as well as those who stepped out of college and feel ready to return to the classroom. We also embrace adults making the brave decision to enter college for the first time—improving life for both themselves and their families.

Our campuses share a common trait: persistence in academic pursuit in a nurturing environment. I take pride in watching all that NOC alumni accomplish as they transition from learners to earners and leaders. Our alumni enter the workforce equipped to immediately impact and help grow our state's economy. The majority of our graduates either go on to complete additional degrees or go right to work in successful careers.

NOC boasts a tradition of excellence made possible by our many partners who know higher education changes lives. I invite you to visit our campuses and become a part of our friendly learning community.

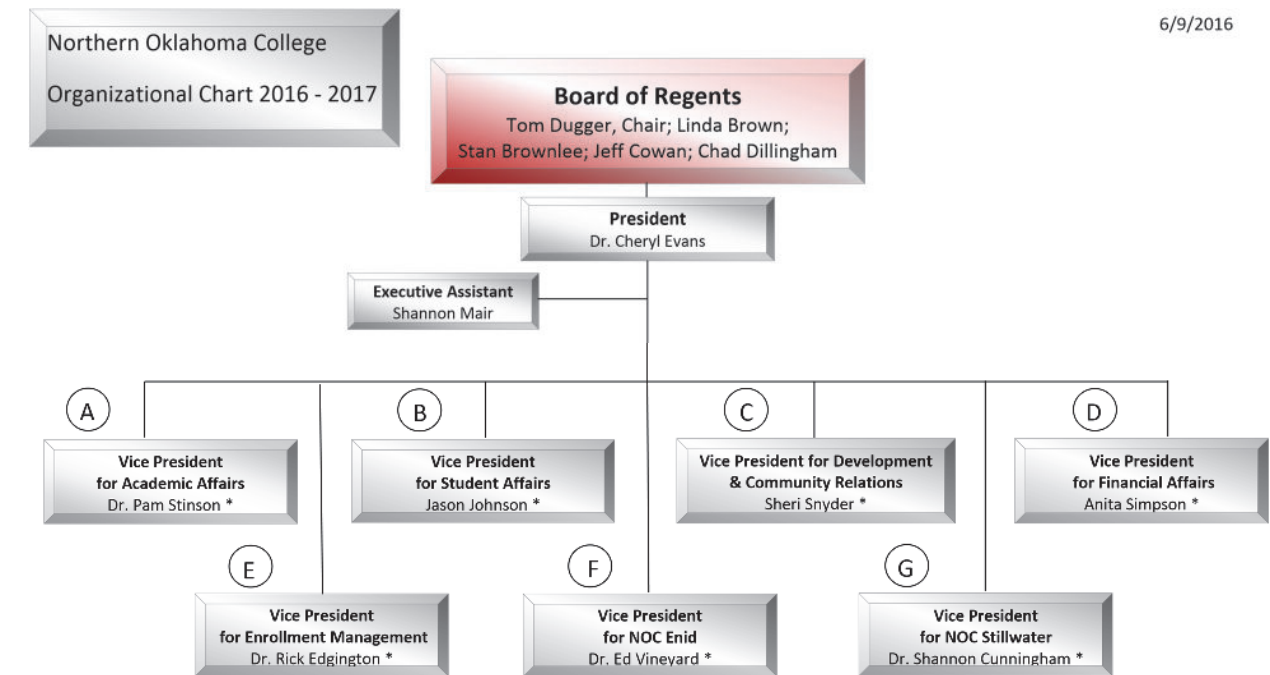
Sincerely,

Cheryl Evans, Ed.D.

President, Northern Oklahoma College

## Organizational Chart – 2016

6/9/2016



Link to Organization Chart – <http://www.noc.edu/organizational-chart>

## Administrative Council\*



**Dr. CHERYL EVANS:** President Northern Oklahoma College. Dr. Evans received a Bachelor of Arts in Mass Communications at Northwestern. She finished her Master of Arts in Communication at Wichita State University and her Doctorate in Education at Oklahoma State University. Evans is the thirteenth president since NOC was founded in 1901 and the first female NOC president. Dr. Evans has been serving as president at Northern Oklahoma College since June 1, 2011.



**Dr. SHANNON CUNNINGHAM:** Vice President NOC Stillwater. Dr. Cunningham received an Associate of Arts degree in Agriculture from Northeastern Oklahoma A & M College in 2000, a Bachelor of Science degree in Animal Science from Oklahoma State University in 2002, a Master of Education degree in Workforce Development/Vocational Education from the University of Arkansas in 2006, and a Doctorate in Philosophy degree in Agriculture Education and Leadership from Oklahoma State University in 2013. Dr. Cunningham began her employment at Northern Oklahoma College in July 2015.



**LARRY DYE:** Associate Vice President Physical Operations. Mr. Dye received an Associate Degree from Northern Oklahoma College in 1967. Mr. Dye has been at Northern Oklahoma College since 1999.





**Dr. RICK EDGINGTON:** Vice President Enrollment Management; Registrar. Dr. Edgington received an Associate of Arts degree from Northern Oklahoma College in 1984, a Bachelor of Arts degree in Music Education from Wichita State University in 1986, a Master of Education degree in Music Education from Wichita State University in 1988, and a Doctorate in Education degree in Higher Education Administration from Oklahoma State University in 2005. Dr. Edgington has been at Northern Oklahoma College since 1997.



**JEREMY HISE:** Athletic Director for Tonkawa and Enid. Mr. Hise has sixteen years of coaching experience at the high school, NAIA and NJCAA level, including eleven years as an associate head baseball coach at Northern. Mr. Hise is a 1998 graduate of Northern Oklahoma College. He also earned a Bachelor of Arts in History Education from the University of Central Oklahoma and a Master of Education from Northwestern Oklahoma State in 2002. Mr. Hise has been at Northern Oklahoma College since 2002.



**BRADLEY JENNINGS:** Dean of Student Affairs in Enid. Mr. Jennings earned a Bachelor of Science degree in Technology Engineering Education from Southwestern Oklahoma State University in 2009, and a Master of Education degree in Parks and Recreation Management from Southwestern Oklahoma State University in 2013. Mr. Jennings has been at Northern Oklahoma College since 2014.



**Dr. RAE ANN KRUSE:** Dean of Academic Services. Dr. Kruse earned a Bachelor of Science degree in Business Education from Oklahoma State University in 1994, a Master of Education degree in Adult Education from the University of Central Oklahoma in 2007, and a Doctorate in Education in Educational Leadership Studies-School Administration from Oklahoma State University in 2012. Dr. Kruse began her employment at Northern Oklahoma College in 2015.



**JASON JOHNSON:** Vice President Student Affairs. Mr. Johnson received an Associate of Arts degree from Northern Oklahoma College in 1994, a Bachelor of Science degree from the University of Central Oklahoma in 1996, and a Master of Education in Adult Education Management and Administration from Northwestern Oklahoma State University in 2003. Mr. Johnson has been at Northern Oklahoma College since 1997.



**MIKE MACHIA:** Director, Information Technology. Mr. Machia earned his Associates of Computer Science from the Community College of Vermont in 2001. He has worked in the field of IT support for Federal and State Government agencies since 1992. Mr. Machia has been at Northern Oklahoma College since 2006.



**RYAN PAUL:** Dean of Student Affairs in Tonkawa. Mr. Paul earned an Associate of Arts degree from Northern Oklahoma College in 1999, a Bachelor of Science degree from Oklahoma State University in 2003, and a Master of Education in Education Administration from Southwestern Oklahoma State University in 2006. Mr. Paul has been at Northern Oklahoma College since 2003.



**ANITA SIMPSON:** Vice President Financial Affairs. Mrs. Simpson received an Associate of Science in Business Administration from Northern Oklahoma College in 1986, a Bachelor of Science in Business Administration from Oklahoma State University in 1988, and passed the Certified Public Accountant exam in August 1999. Mrs. Simpson has been at Northern Oklahoma College since 1994.



**EUGENE SMITH:** Diversity Officer and Coordinator of International Students. Mr. Smith received his Bachelor of Science degree from Morgan State University in 2011, and a Master of Arts in Higher Education Administration from Morgan State University in 2013. Mr. Smith began his employment at Northern Oklahoma College in April 2016.



**SHERI SNYDER:** Vice President Development & Community Relations. Mrs. Snyder received an Associate of Arts in Social Science from Northern Oklahoma College in 1991, a Bachelor of Science in Sociology from Oklahoma State University in 1993, and a Master of Education in Adult Education Management and Administration from Northwestern Oklahoma State University in 2003. Mrs. Snyder has been at Northern Oklahoma College since 1993.



**Dr. PAM STINSON:** Vice President Academic Affairs. Dr. Stinson earned a Bachelor of Arts in English Education from Northeastern State University in 1987, a Master of Arts in Communications from Northeastern State University in 1989, and a Doctor of Philosophy in Composition/Rhetoric and Renaissance Literature from Oklahoma State University in 1997. She taught English at Northern from 1996-1999 and 2001-2008, and she served as chair of the Language Arts Division from 2006-2008. Dr. Stinson has been at Northern Oklahoma College since 1996.



**KIRBY TICKEL-HILL:** Director of Development and Donor Relations. Mrs. Tickel-Hill received an Associate of Arts degree in Education from Northern Oklahoma College in 2003, a Bachelor of Business Administration from University of Central Oklahoma in 2005, and a Master of Business Administration from Cameron University in 2009. Mrs. Tickel-Hill has been at Northern Oklahoma College since 2005.



**Dr. EDWIN R. VINEYARD:** Vice President NOC Enid. Dr. Vineyard received an Associate of Science degree in Business Administration from Northern Oklahoma College in 1981, a Bachelor of Science degree in Management and Economics from Oklahoma State University in 1983, a Master of Science degree in Economics from Oklahoma State University in 1987, and a Doctor of Education in Higher Education Administration from Oklahoma State University in 1989. Dr. Vineyard started teaching part-time at Northern Oklahoma College in 1985. Dr. Vineyard has been full-time at Northern Oklahoma College since 1989.

\*Updated July, 2016

## Grants – 2014\*

Federal Grants	Expenditures
<b>U.S. Department of Education</b>	
<i>Office of Postsecondary Education</i>	
Federal Pell Grant Program	\$ 6,629,981.82
Federal Direct Loan Programs	\$6,765,069.33
Federal Supplemental Education Opportunity	\$108,128.40
Federal Work Study Program	\$99,897.91
<b>Total Student Financial Aid</b>	<b>\$13,603,077.46</b>
<i>Office of Postsecondary Education</i>	
Trio Upward Bound	\$218,059.65
Gaining Early Awareness and Readiness for Undergraduate Program (GEAR-UP)	\$44,983.44
GEAR UP: NOC Leadership Camp	\$4,699.95
Project AAIMS (Advancing American Indians in Medical and Stem Careers)	\$2,775.07
Vocational Education National Centers for Career and Technical Education	\$78,506.78
<b>Total Office of Postsecondary Education</b>	<b>\$349,024.89</b>
<b>Total U.S. Department of Education</b>	<b>\$13,952,102.35</b>
<b>U.S. Department of Health and Human Services</b>	
Temporary Assistance for Needy Families (TANF)	\$197,227.93
Oklahoma State Regents for Higher Education Child Care Development Block Grant Refugee & Entrant Assistance	\$137,669.03
<b>Total U.S. Department of Health and Human Services</b>	<b>\$408,172.58</b>
<b>Corporation for National and Community Service</b>	
AmeriCorps	\$16,629.95
<b>U.S. Department of Labor</b>	
Subcontract from OCCC/TAACCCT – Oklahoma Works!	
Prime Contract #DOL-TC-22540-11-60-A-40	\$4,613.57
<b>Total Expenditures of Federal Awards</b>	<b>\$14,308,242.83</b>

State Grants	Expenditures
Oklahoma's Promise ( previously known as OHLAP)	\$742,458.68
State Regents Academic Scholarships	\$26,973.00
Indian Gaming Management Curriculum	\$5,434.58
Oklahoma Tuition Aid Grant Program (OTAG)	\$456,375.46
Quality Initiative Grant, Institution for Tribal Leadership	\$32,389.45
Teacher Education and Compensation Helps	\$87,923.64
<b>Total State Expenditures</b>	<b>\$1,351,554.81</b>

Private Grants	Expenditures
American Association of Community Colleges Plus 50 Encore Completion Program	\$840.17
<b>Total Private Expenditures</b>	<b>\$840.17</b>

Foundation Grants	Expenditures
Phillips 66 – Process Technology Grant	\$17,493.75
<b>Total Foundation Expenditures</b>	<b>\$17,493.75</b>

\*Tentative figures collected on June 2016 for FY 2016.



## Advisory Board Members

Agriculture	
	Scott Blubaugh, Insurance agent and Angus ranch owner
	Calvin Crumrine, Crumrine Auctioneers
	Dale DeWitt, Former State Representative, Braman
	Keith James, JKJ Auctioneers
	Jeremy Johns, P&K Equipment
	Allen Miller, OK Dept. of Career Tech Ed. Ag Program Specialist
	Travis Perrin, Noble Co. Livestock Owner
	Mary Steichen, Silver Top Farms
	Francie Tolle, Risk Management Agency Regional Director
Business	
	Jon Archer, Bankers Life and Casualty Insurance
	Rich Cantillion, Ponca City Chamber of Commerce
	Angie Drake, Charles Machine Works
	Molly Kyler, Organizational & Leadership Development Director
	Mark Macy, Management Training Consultant
	Dr. Steven Palmer, Northwestern Oklahoma State University
	Brad Purdy, First National Bank, Ponca City
Criminal Justice	
	Chief Don Bohon, Ponca City Police
	Lt. Colt Chandler, OSU Police
	Interim Director Bob Cook, OK Bureau of Narcotics
	Chief John Cooper, Tonkawa Tribal Police
	Director Stan Florence, OK State Bureau of Investigation
	Sheriff R B Hauf, Payne County
	LTC Russ Maples, OK Highway Patrol
	Chief Ryan McCaghren, Stillwater Police
	Chief Brian O'Rourke, Enid Police
	Chief Brian Thomas, Perry Police
	Chief John Whitham, Tonkawa Police
	Chief Dewayne Wood, Blackwell Police
Digital Media Institute	
	J. T. Burg, Ackerman and McQueen
	Jimmy Haines, Teamwork Services
	Kevin Hanley, Creative Video Works, Inc.
	Bryan Murphy, Linear AMS
	Piyush Patel, PL Studios
	Jeff Sublett, CVW Media
	Vico Sharabani Rhino, VJX and Design
	Kyle Terry, Boiling Point Media
	Craig Woods, Ag. Comm. Services
Mass Communications	
	Sean Anderson, Team Radio
	Scott Cloud, Newkirk Herald-Journal
	Jeff Couch, Cumulus Radio
	Jeff Funk, Enid News-Eagle
	Charles Gerain, Blackwell Journal-Tribune
	Tom Muchmore, Ponca City News
	Ricky Roggow, Chisholm Trail Radio

## Nursing/Allied Health

	Blackwell Regional Hospital
	The Commons
	Greenbrier Nursing Home
	Hillcrest Hospital
	Hillcrest Manor
	Integris Bass Baptist Hospital
	Integris NW Specialty
	Meadowlake
	Northwest Center for Behavioral Health
	Oklahoma Forensic Center
	OU Medical Center
	Perry Memorial Hospital
	Ponca City Medical Center
	Ponca City Nursing Home and Rehab
	Renaissance of Stillwater
	St. Mary's Regional Medical Center
	Stillwater Medical Center
	Via Christi Village
	Valley Hope Alcoholism and Drug Addiction Treatment Center
	Westhaven Nursing and Rehab Center
Process Technology	
	AeroTek
	Air Products
	AirLiquide
	CF Industries
	Continental Technologies
	FRI – Fractionation Research Institutions
	GE Oil and Gas
	Jupiter Sulfur
	Koch Industries
	NCRA Refining, Kansas
	OG&E
	Oklahoma Municipal Power Authority
	Phillips 66
	Ponca City Development Authority

## Community Supporters/Partnerships

### Academic Partners

- Enid Higher Education Council
- Enid Public Schools University Center
- Institute for Tribal Government
- NOC/NWOSU Bridge Program
- NOC/OSU Gateway Program
- Oklahoma Manufacturing Alliance
- University Center of Ponca City

### Articulation Agreements

- Baker University
- Midwestern State University
- Northeastern State University
- Northwestern Oklahoma State University
- Oklahoma State University
- University of Central Oklahoma

### Career Technology Partners

- Autry Technology Center – Enid
- Chisholm Trail Technology Center – Omega
- High Plains Technology Center – Woodward
- Meridian Technology Center – Stillwater
- Northwest Technology Center – Alva and Fairview
- Pioneer Technology Center – Ponca City

### Sponsored Programs

- GEAR UP
- Northwest Post-Secondary Consortium
- Reach Higher
- Scholars for Excellence in Childcare
- TAACT – Oklahoma Works
- TANF – Temporary Assistance for Needy
- Upward Bound

## Foundation Board Members for 2016

### EXECUTIVE COMMITTEE

**Chairman:** Mr. Tom Poole

**Vice Chairman:** Mr. John Martin

**Past Chairman:** Mr. Mike Loftis

**Chief Executive Officer:** Dr. Cheryl Evans

**Executive Director:** Mrs. Sheri Snyder

**Development Officer:** Mrs. Kirby Tickel-Hill

**Treasurer:** Mrs. Anita Simpson

**Secretary:** Mrs. Misty Fath

### Group 1 Trustee (Northern Oklahoma College Regents)

1. Regent Stan Brownlee (*Term ends 6-30-2017*)
2. Regent Jeff Cowan (*Term ends 6-30-2017*)

### Group 2 Trustee (NOC Leadership)

1. Dr. Cheryl Evans, NOC President
2. Mrs. Sheri Snyder, Executive Director
3. Mrs. Anita Simpson, Treasurer
4. Mrs. Kirby Tickel-Hill, Director of Development & Donor Relations
5. Mrs. Jill Green, Director of Alumni and Community Relations
6. Dr. Pam Stinson, Ex-Officio
7. Dr. Edwin Vineyard, Ex-Officio
8. Dr. Shannon Cunningham, Ex-Officio
9. Dr. Rick Edgington, Ex-Officio
10. Mr. Jason Johnson, Ex-Officio

### Group 3 Trustee (Community Leaders)

11. Mr. David Cummings – Tonkawa Area (*Term ends 6-30-2017*)
12. Mr. Jim Rodgers – Tonkawa Area (*Term ends 6-30-2017*)
13. Mr. Mike Loftis – Stillwater Area (*Term ends 6-30-2017*)
14. Bert Mackie – Enid Area (*Term ends 6-30-2017*)
15. Mr. Mark Detten – Tonkawa Area (*Term ends 6-30-2018*)
16. Mr. John Martin – Enid Area (*Term ends 6-30-2018*)
17. Vacant – Stillwater Area (*Term ends 6-30-2018*)
18. Mrs. Carol Diemer – Tonkawa Area (*Term ends 6-30-2018*)
19. LynnDe Funk – Enid Area (*Term ends 6-30-2019*)
20. Mr. Tom Poole – Tonkawa Area (*Term ends 6-30-2019*)
21. Mrs. Kathi Box – Enid Area (*Term ends 6-30-2019*)
22. Vacant – Stillwater Area (*Term ends 6-30-2019*)

### Group 4 Trustee (NOC Staff)

1. Mrs. Misty Fath, Gift Processing Coordinator
2. Vacant, Admin. Asst. to Treasurer
3. Mrs. Kerri Gray, Institutional Scholarship Coordinator





# Academics



Life changing.



## Academics

### Contact Information

Website: [www.noc.edu](http://www.noc.edu)



**Tonkawa**  
 1220 East Grand Ave., P.O. Box 310  
 Tonkawa, Oklahoma 74653-0310  
 Main Number 580.628.6200  
 Main Fax 580.628.620



**Enid**  
 100 S. University Ave., P.O. Box 2300  
 Enid, Oklahoma 73702-2300  
 Main Number 580.242.6300  
 Main Fax 580.548.2216



**NOC/OSU Gateway Program**  
 1118 W. Hall of Fame, P.O. Box 1869  
 Stillwater, Oklahoma 74076-1869  
 Main Number 405.744.2246  
 Main Fax 405.744.2227

**Nursing at Stillwater Fountain Square**  
 1311 South Western  
 Stillwater, Oklahoma 74074  
 Main Number 405.533.7601

**Child Development**  
 211 N. Perkins #23  
 Stillwater, Oklahoma 74074  
 Main Number 405.372.2487  
 Main Fax 405.533.4038  
 Scholars for Excellence in Child Care  
 Main Number 405.372.2404

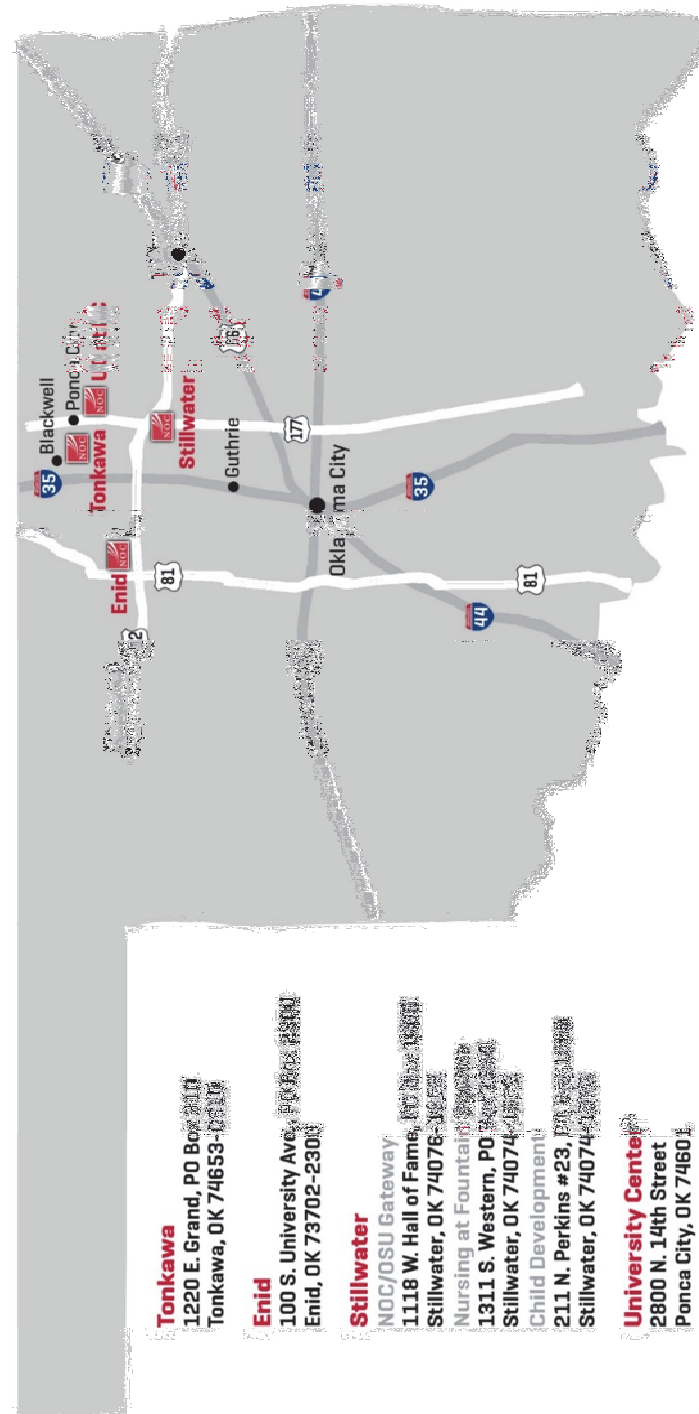


**University Center at Ponca City**  
 2800 North 14<sup>th</sup> Street  
 Ponca City, Oklahoma 74601  
 Main Number 580.718.5600  
 Main Fax 580.762.2315

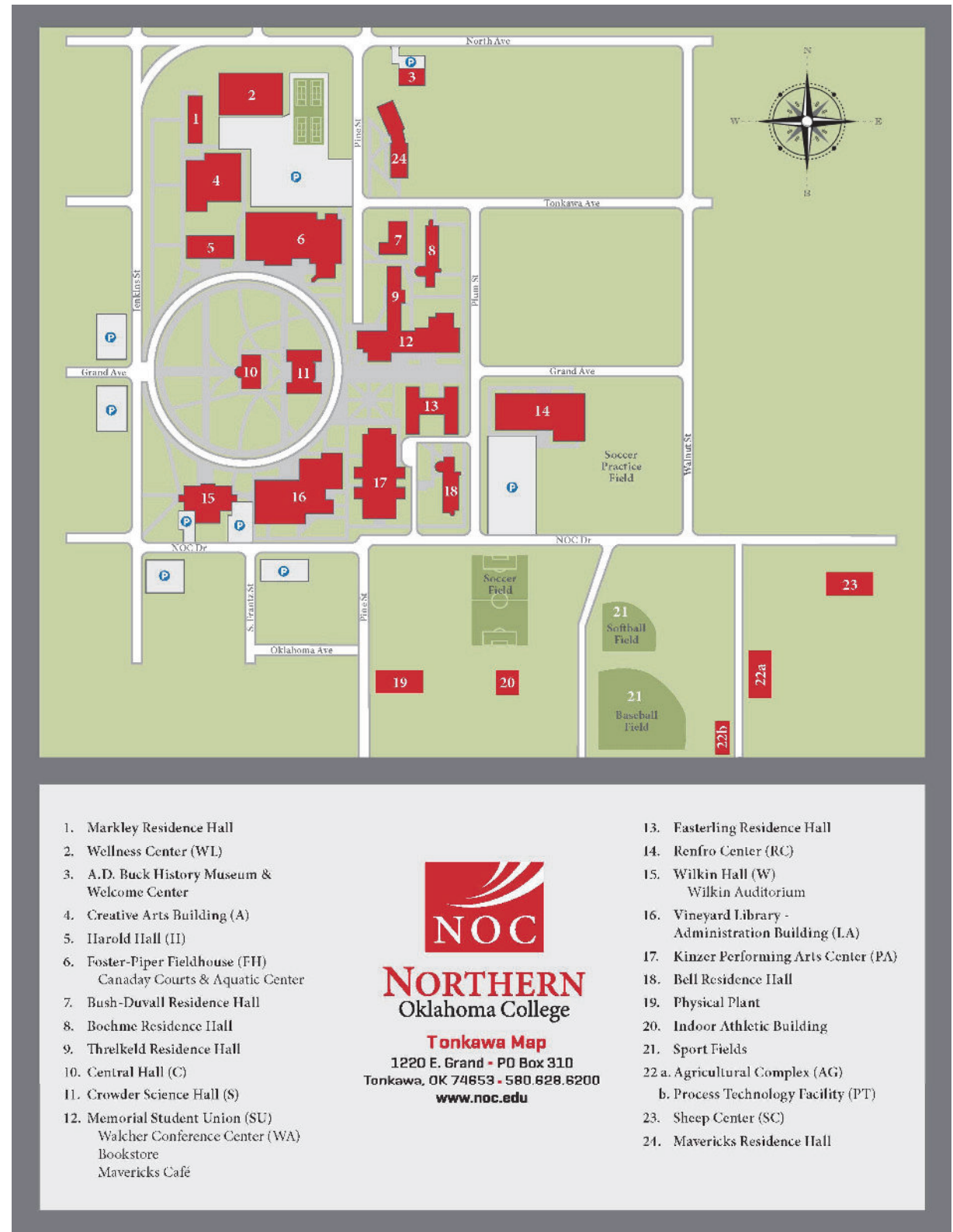


## Maps

### State

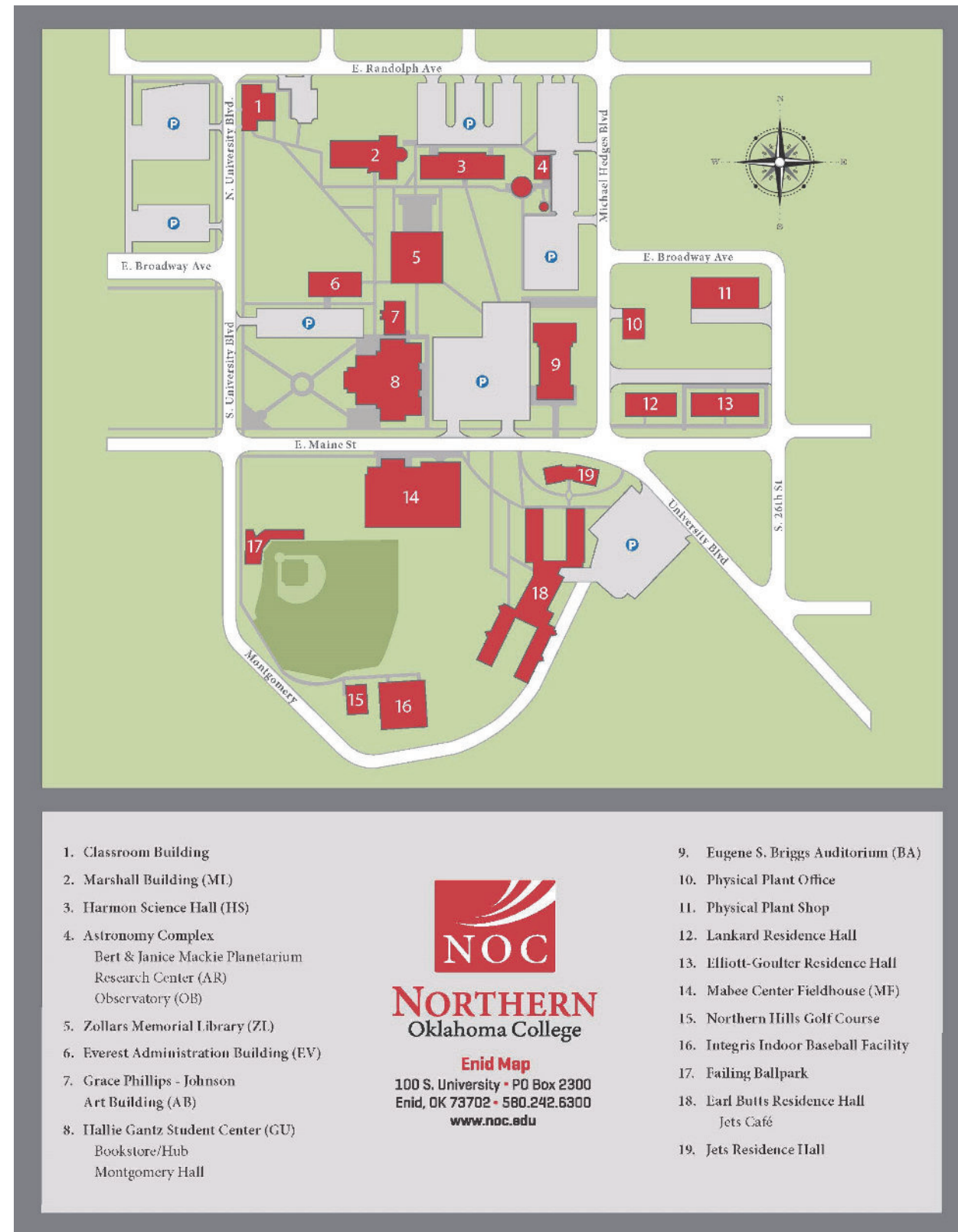


## Tonkawa

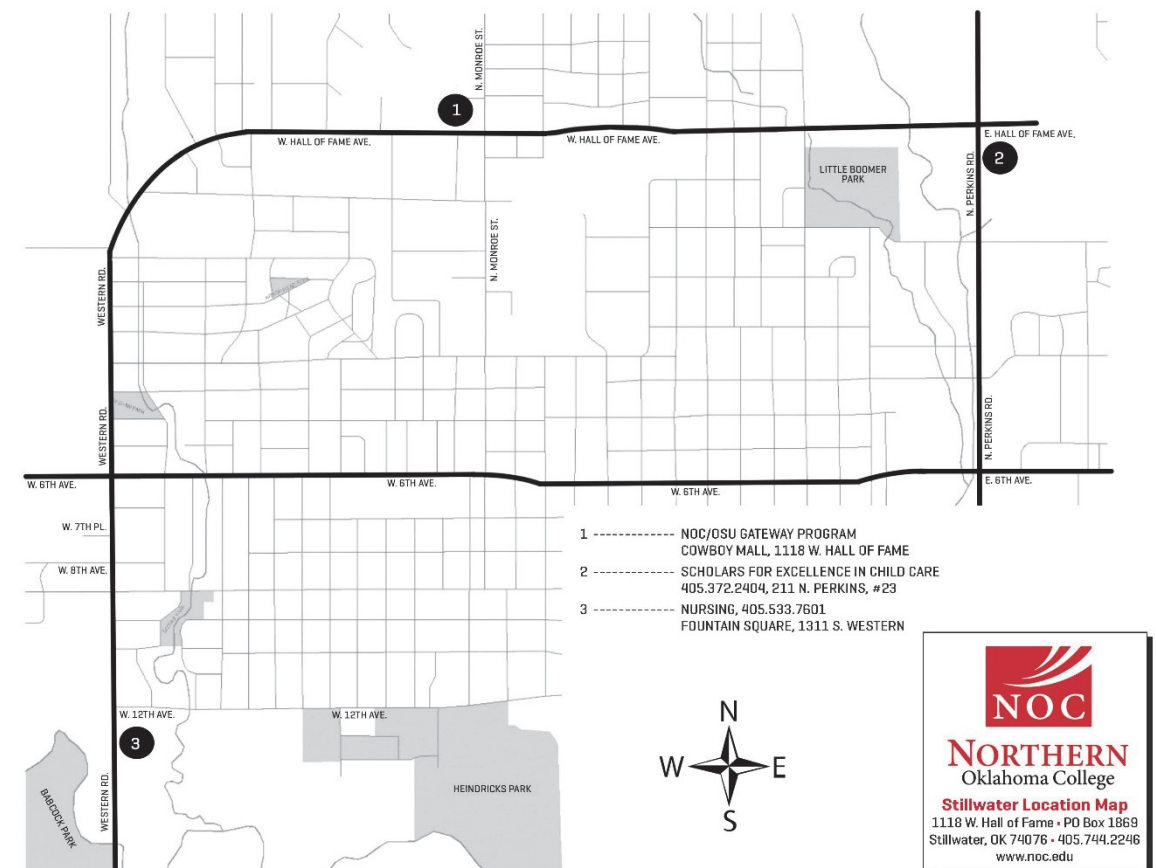




## Enid



## Stillwater



## Programs of Study

### Associate in Arts

Art	English-Creative Writing Option
Child Development	Enterprise Development-Business Administration Option
Child Development-Administration and Management of Child Care Program Certificate	Enterprise Development-General Studies Option
Communications-Mass Communications Option	Music
Communications-Photography Option	Music-Music Theatre Option
Criminal Justice Administration	Social Science
Education-Elementary Option	Social Science-Behavioral Science Option
English	

### Associate in Science

Agricultural Sciences	Health, Physical Education, & Recreation
Arts and Sciences-General Studies	Health, Physical Education, & Recreation-Athletic Training Option
Arts and Sciences-International Studies Option	Health, Physical Education, & Recreation-Personal Trainer Option
Biological Sciences	Mathematics and Physical Science
Biological Sciences-Pre-Medicine Option	Mathematics and Physical Science-Astronomy Option
Biological Sciences-Pre-Pharmacy Option	Mathematics and Physical Science-Mathematics/Physics Option
Business Administration	Mathematics and Physical Science-Mathematics Option
Business Administration-International Business Option	Mathematics and Physical Science-Pre-Engineering Option
Business Administration-Management	Nursing, Pre-Professional, Pre-Baccalaureate
Information Systems Option	
Computer Science, Pre-Professional	
Enterprise Development-Business Administration Option (Statewide Consortium)	
Enterprise Development-General Studies Option (Statewide Consortium)	

### Associate in Applied Science

Applied Technology-Military Services Option
Business Management
Business Management-Accounting Area of Emphasis
Business Management-Entrepreneurship Option
Digital Media Animation and Design (DMAD)
Engineering and Industrial Technology-Power Generation Option
Engineering and Industrial Technology-Process Technology Option
Nursing-Registered Nurse (RN) Option
Nursing-Practical Nurse Eligibility Certificate

## Accreditations

Higher Learning Commission – North Central Association of Colleges and Schools

- Year of Last Comprehensive Evaluation 2007 – 2008
- Year for Next Comprehensive Evaluation 2017 – 2018

Accreditation Council for Business Schools and Programs

- Year of Last Comprehensive Evaluation 2007 – 2008
- Year for Next Comprehensive Evaluation 2017 – 2018

Nursing Accreditation

- Accreditation Commission for Education and Nursing (ACEN) – formerly known as the National League for Nursing Accrediting Commission
  - Year of Last Comprehensive Evaluation 2013 – 2014
  - Year for Next Comprehensive Evaluation 2022 – 2023
- Oklahoma Board of Nursing
  - Year of Last Comprehensive Evaluation 2010 – 2011
  - Year for Next Comprehensive Evaluation 2015 – 2016

## Honor Societies

- Kappa Beta Delta (Business)
- Phi Theta Kappa (International Honor Society)
- Delta Psi Omega (Drama)

## High-Impact Strategies

- NOC has continued to work with Enid Public Schools in a partnership to expand college-level course offerings taken by juniors and seniors at the EPS, a new \$6.5 million, 16-classroom, four-laboratory building, designed to house AP courses and concurrent enrollment.
- In alignment with the College's strategic goals, NOC students had opportunities to enrich their student experience by participating in internships, job shadowing, and summer employment related to their major.
- Co-requisite models in Composition and math allow students to begin earning college credit with the support of concurrent remedial support sections.
- The Office of Enrollment Management has worked with peers at the University of Central Oklahoma, Northwestern Oklahoma State University, and Oklahoma State University to identify strategies for reverse transfer. Through a pilot program with UCO, this discussion led to attorneys drafting new language at the federal level rewriting FERPA guidelines. This helped to expedite the process and raise the number of graduates in Oklahoma and to serve as a national model for reverse transfer. Over 650 students from OSU were targeted in the reverse transfer initiative. As of May 2016, and additional 314 degrees have been awarded through the reverse transfer process with OSU, UCO, and OU.
- In addition to regular participation in the state transfer matrix meetings, maintaining strong articulation agreements with partner transfer institutions continues to benefit students through curriculum alignment for ease of transfer. Since the start of this initiative, over students from UCO, OSU, and OU have earned an associate degree from Northern through reverse transfer.





# Students

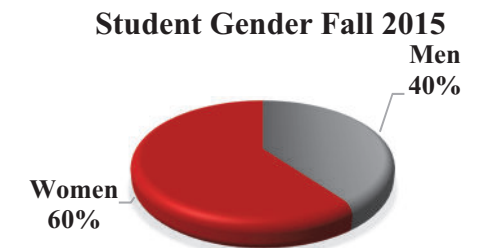
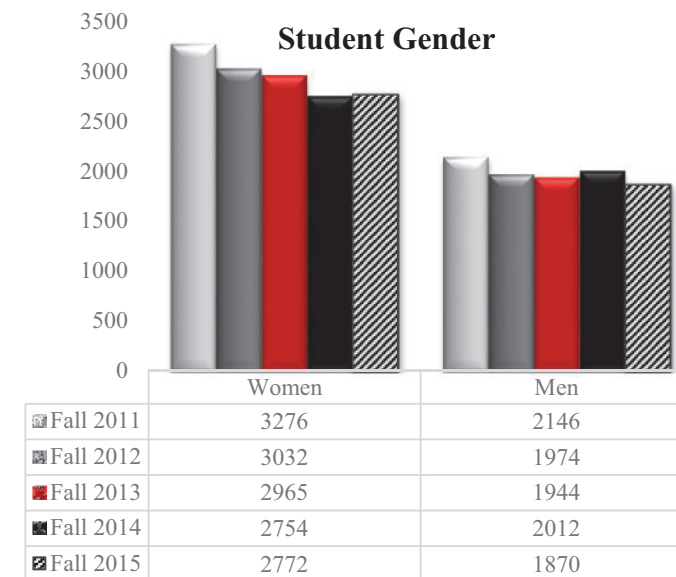
## Students

**Student Profiles by Fall** – All data in this section is for fall unless otherwise indicated.

### Student Gender

	Fall 2011	Fall 2012	Fall 2013	Fall 2014	Fall 2015
Men Full-time	1,231	1,097	1,024	996	944
Men Part-time	915	877	920	1,016	926
<b>Total</b>	<b>2,146</b>	<b>1,974</b>	<b>1,944</b>	<b>2,012</b>	<b>1,870</b>

Women Full-time	1,571	1,482	1,324	1,119	1,132
Women Part-time	1,705	1,550	1,641	1,635	1,640
<b>Total</b>	<b>3,276</b>	<b>3,032</b>	<b>2,965</b>	<b>2,754</b>	<b>2,772</b>

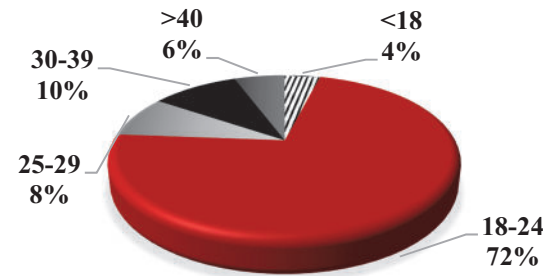


### Student Age

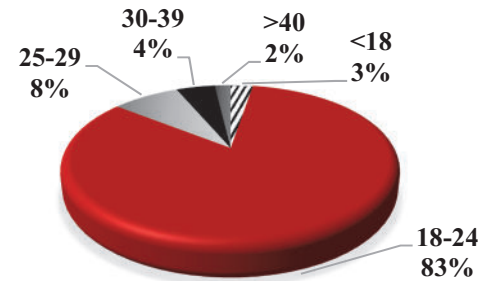
	Men					Women				
	Fall 2011	Fall 2012	Fall 2013	Fall 2014	Fall 2015	Fall 2011	Fall 2012	Fall 2013	Fall 2014	Fall 2015
<18	88	79	76	80	49	188	162	159	196	110
18-24	1,625	1,524	1,558	1,641	1,553	2,051	1,912	1,943	1,845	2,003
25-29	190	166	144	133	148	365	367	299	248	229
30-39	150	126	97	102	85	376	336	344	290	272
>40	88	79	69	56	35	294	255	220	175	158
<b>Total</b>	<b>2,141</b>	<b>1,974</b>	<b>1,944</b>	<b>2,012</b>	<b>1,870</b>	<b>3,274</b>	<b>3,032</b>	<b>2,965</b>	<b>2,754</b>	<b>2,772</b>



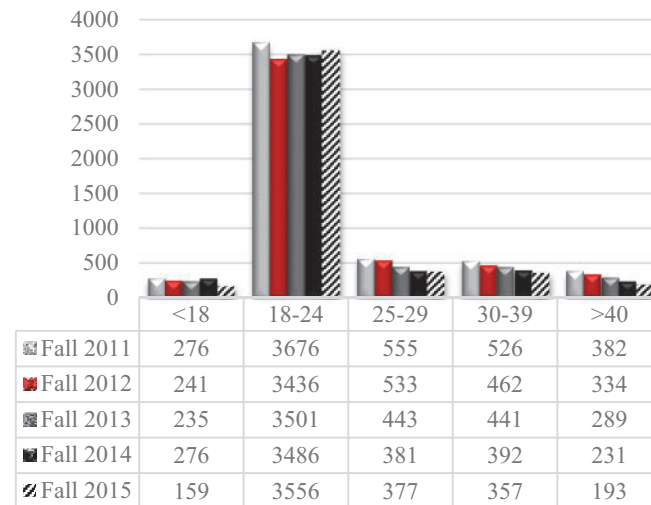
**Student Age Distribution -  
Women Fall 2015**



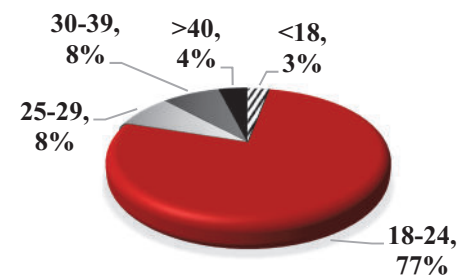
**Student Age Distribution -  
Men Fall 2015**



**Student Age Distribution**



**Student Age Distribution -  
Fall 2015**



#### **Student Race/Ethnicity**

	Fall 2011	Fall 2012	Fall 2013	Fall 2014	Fall 2015
American Indian or Alaska Native	602	557	517	569	534
Asian	47	66	43	63	34
Black or African American	311	280	266	265	250
Native Hawaiian or other Pacific Islander	0	0	0	0	22
Hispanic/Latino	291	257	299	267	382
White	4,130	3,774	3,720	3,511	2,653
Unknown	0	41	27	0	186
Non-Resident/Alien	41	31	37	90	94
Two races or more	0	0	0	1	487

#### **Student Residence\***

	Fall 2011	Fall 2012	Fall 2013	Fall 2014	Fall 2015
Arkansas	1	0	6	1	0
California	5	3	2	4	3
Colorado	0	0	1	2	1
Florida	1	1	1	1	4
Georgia	2	1	0	2	2
Idaho	0	0	0	0	2
Illinois	1	1	3	1	1
Indiana	1	3	0	0	1
Iowa	1	0	1	0	0
Kansas	10	5	2	4	7
Kentucky	1	0	0	1	0
Louisiana	0	0	0	0	1
Maryland	0	0	2	1	0
Massachusetts	1	0	1	0	0
Michigan	3	0	0	0	1
Missouri	0	0	1	0	2
Nebraska	0	0	0	1	0
New Hampshire	0	0	1	0	0
New Jersey	1	0	0	0	1
New Mexico	0	0	1	0	1
New York	1	2	3	1	0
Ohio	1	0	0	0	2
Oklahoma	968	948	938	923	896
Oregon	0	1	0	0	0
Rhode Island	0	0	0	0	1
South Carolina	0	1	0	0	0
Tennessee	0	0	0	2	0
Texas	30	23	22	37	23
Utah	0	0	0	2	0
Virginia	1	0	0	0	0
Marshall Islands	0	0	0	2	0
Puerto Rico	0	0	0	0	2
Foreign Countries	18	16	17	57	54

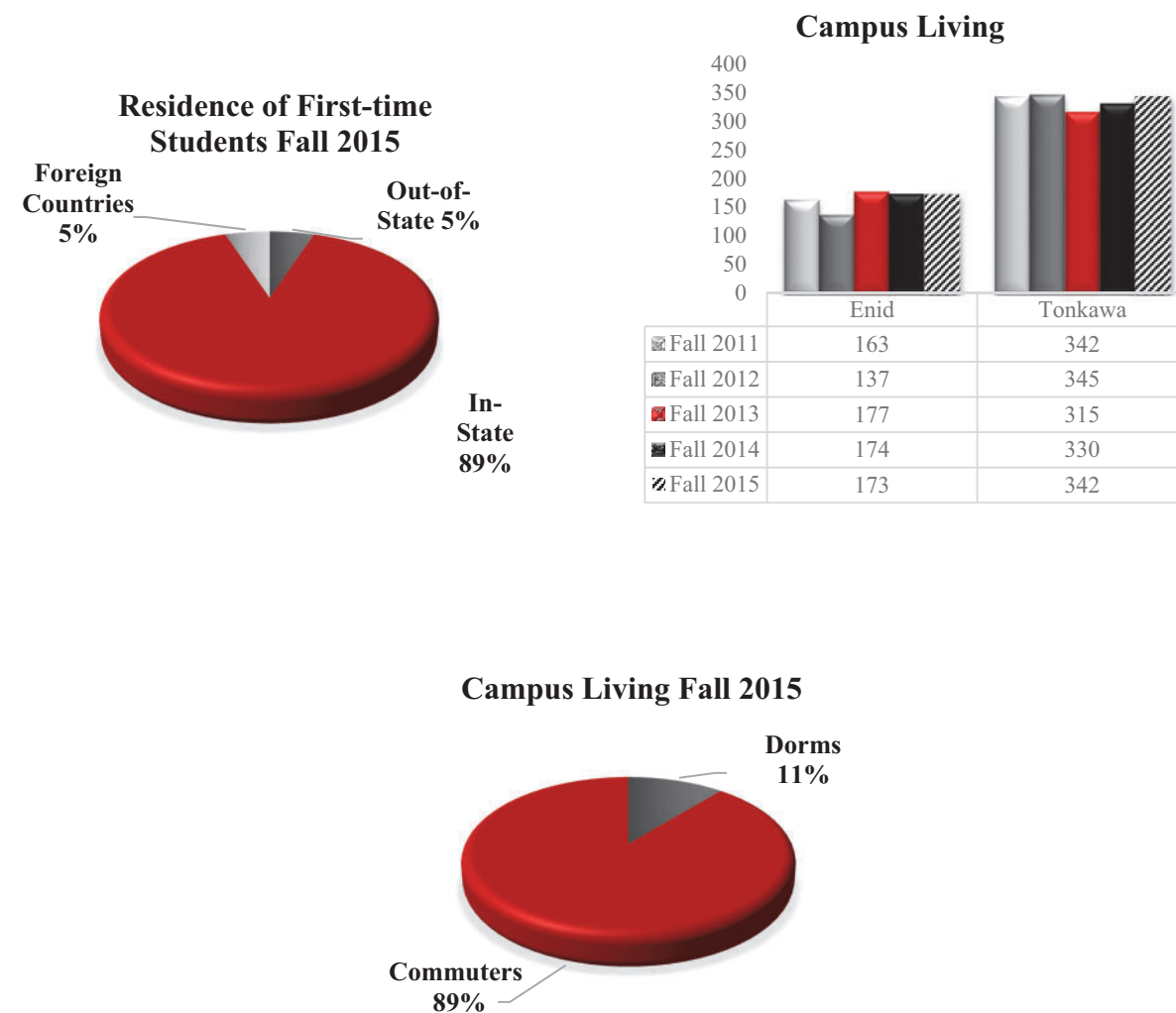
\* Numbers for first-time students



### Student Housing\*

Campus Living	Fall 2011	Fall 2012	Fall 2013	Fall 2014	Fall 2015
Men - Enid	84	79	96	90	93
Men - Tonkawa	175	181	167	176	176
Women - Enid	79	58	81	84	80
Women - Tonkawa	167	164	148	154	166
<b>Total</b>	<b>505</b>	<b>482</b>	<b>492</b>	<b>504</b>	<b>515</b>

\* Data obtained from Student Affairs Office



### Enrollment

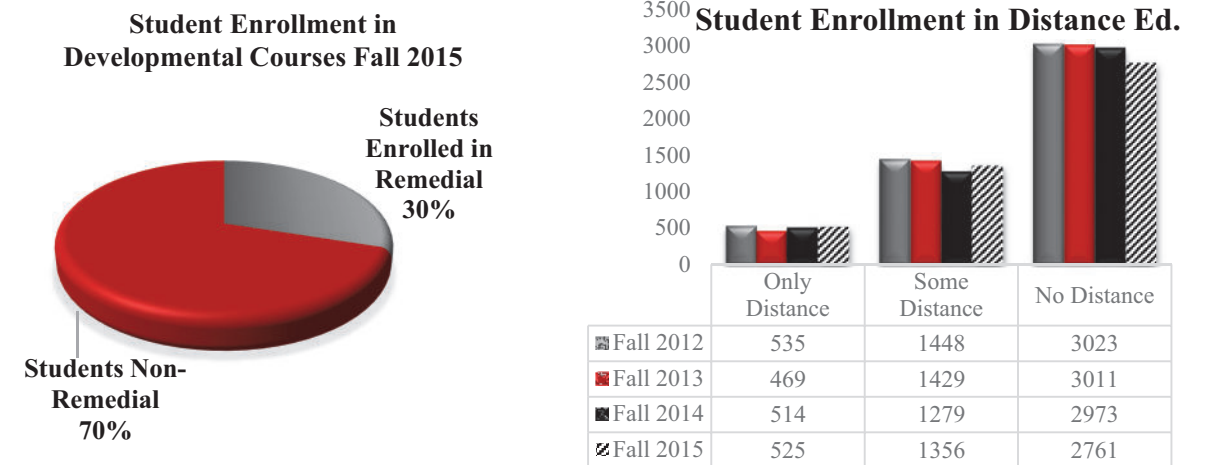
#### Student Enrollment

	Fall 2011	Fall 2012	Fall 2013	Fall 2014	Fall 2015
Full-time Students	2,802	2,579	2,348	2,115	2,076
Part-time Students	2,312	2,166	2,561	2,651	2,566
<b>Total Enrollment</b>	<b>5,422</b>	<b>5,006</b>	<b>4,909</b>	<b>4,766</b>	<b>4,642</b>

#### Student Enrollment in Developmental Courses\*

	Fall 2012	Fall 2013	Fall 2014	Fall 2015
1 Remedial Course	908	949	903	995
2 Remedial Courses	237	232	247	245
3 Remedial Courses	131	113	111	123
4 or more Remedial Courses	82	76	56	18
<b>Total Students</b>	<b>1,358</b>	<b>1,370</b>	<b>1,317</b>	<b>1,381</b>
<b>Total Seats</b>	<b>2,105</b>	<b>2,060</b>	<b>1,955</b>	<b>1,926</b>

\* Data retrieved from Student Information System



#### Student Enrollment in Distance Education

	Fall 2012	Fall 2013	Fall 2014	Fall 2015
Only Distance Education	535	469	514	525
Some Distance Education	1,448	1,429	1,279	1,356
No Distance Education	3,023	3,011	2,973	2,761

## Courses

### Number of Online and Fast-Track Courses for the Academic Year\*

	AY-2012	AY-2013	AY-2014	AY-2015
Online Course Selections (number of different courses)	41	49	50	51
Total Online Sections	110	105	112	122
8 Week Course Selections (number of different courses)	50	48	39	41
Total 8 Week Sections Offered	131	124	96	103
ITV Course Selections (number of different courses)	82	82	81	80
Total ITV Course Sections Offered	477	477	447	446

\*Data retrieved from Student Information System (does not include summer courses for that academic year)

## Student Graduation/Completion

### Degrees Awarded

	AY-2010	AY-2011	AY-2012	AY-2013	AY-2014
Associate Degrees Awarded	790	842	787	853	800

### Student Retention

	Fall 2010	Fall 2011	Fall 2012	Fall 2013	Fall 2014
Retention First-Time Student					
• Full-time	52%	52%	51%	55%	60%
• Part-time	43%	35%	43%	37%	41%

### Student Graduation Rates

	AY-2010	AY-2011	AY-2012	AY-2013	AY-2014
Overall Graduation Rate	20%	23%	19%	20%	25%
Transfer-out Rate	28%	23%	24%	28%	21%
Graduation Rate for Men	20%	20%	17%	18%	24%
Graduation Rate for Women	20%	25%	21%	23%	26%

### Student Reverse Transfer

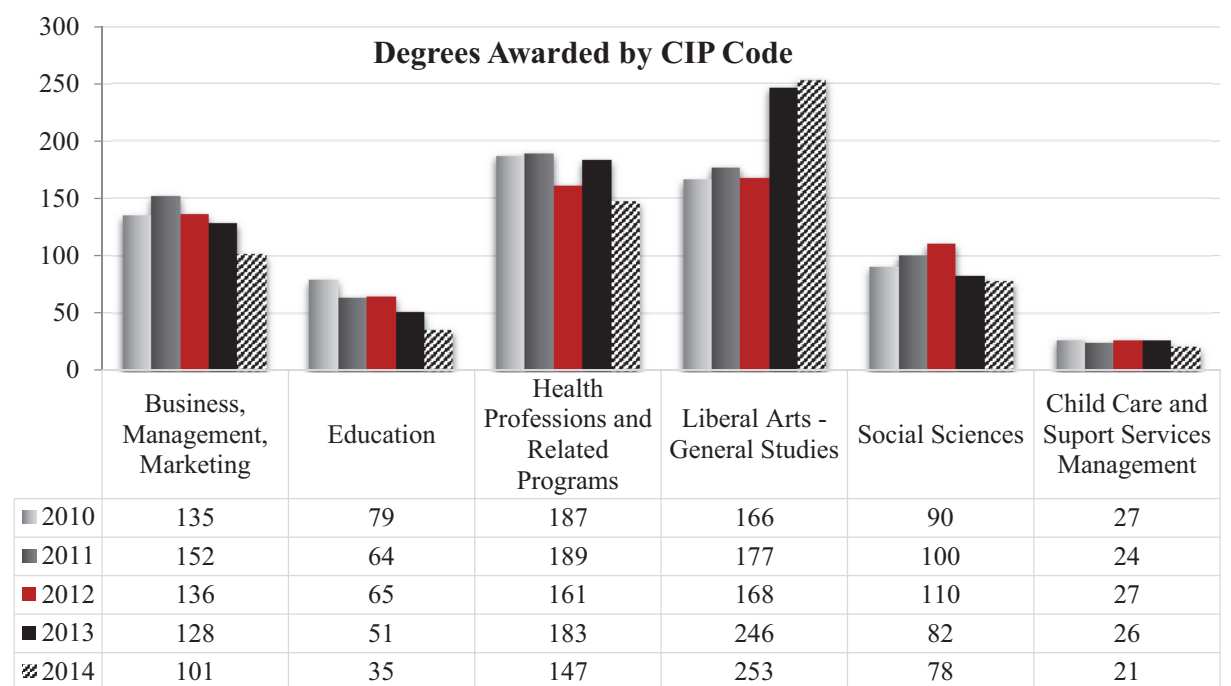
Degrees Awarded through Reverse Transfer	AY-2014*	AY-2015
University of Central Oklahoma	192	47
Oklahoma State University	312	253
University of Oklahoma	23	14
Total		

\*This includes the Spring 2014, Summer 2014, Fall 2014, Spring 2015. Obtained from the Office of the Registrar.

## Degrees Awarded (CIP Code)\*

	AY-2010	AY-2011	AY-2012	AY-2013	AY-2014
Agriculture	5	11	16	17	22
Biological	5	11	12	10	13
Business, Management, Administrative Assistant, Technology	135	152	136	128	101
Information Technology	10	11	13	14	11
Communication, Journalism	5	9	10	3	0
Computer and Information Sciences	1	4	3	3	6
Education	79	64	65	51	35
Engineering and Related Fields	28	38	34	41	32
English Language and Literature	0	0	0	8	12
Child Care and Support Services Management	27	24	27	26	21
Health and Physical Education/Fitness	0	0	0	31	32
Health Professions and Related Programs	187	189	161	183	147
Criminal Justice/Police Science	18	22	27	11	25
Liberal Arts – General Studies	166	177	168	246	253
Physical Science & Mathematics	7	5	12	9	28
Biology Technician	1	1	0	0	0
Social Sciences	90	100	110	82	78
Visual and Performing Arts	26	17	20	35	32

\*Multiple degrees in each classification according to CIP (Classification of Instrumental Programs) Code





### Tuition and Fees by Location In-State (per credit hour)\*

	2011-2012	2012-2013	2013-2014	2014-2015	2015-2016
	In - State	In - State	In - State	In - State	In - State
<b>Tonkawa</b>					
Tuition	\$61.80	\$65.65	\$69.50	\$74.00	\$78.00
Fees	27.20	29.20	31.15	33.30	37.15
Total	<b>\$89.00</b>	<b>\$94.85</b>	<b>\$100.65</b>	<b>\$107.30</b>	<b>\$115.15</b>
<b>Enid</b>					
Tuition	\$61.80	\$65.65	\$69.50	\$74.00	\$78.00
Fees	40.20	42.20	44.15	46.30	50.15
Total	<b>\$102.00</b>	<b>\$107.85</b>	<b>\$113.65</b>	<b>\$120.30</b>	<b>\$128.15</b>
<b>NOC/OSU Gateway</b>					
Tuition	\$61.80	\$65.65	\$69.50	\$74.00	\$78.00
Fees	192.45	195.90	209.05	204.55	214.25
Total	<b>\$254.25</b>	<b>\$261.55</b>	<b>\$278.55</b>	<b>\$278.55</b>	<b>\$292.25</b>
<b>UC – Ponca City</b>					
Tuition	\$61.80	\$65.65	\$69.50	\$74.00	\$78.00
Fees	40.00	70.00	70.00	70.00	75.00
Total	<b>\$101.80</b>	<b>\$135.65</b>	<b>\$139.50</b>	<b>\$144.00</b>	<b>\$153.00</b>
<b>Concurrent &amp; Ed Centers</b>					
Tuition	\$61.80	\$65.65	\$69.50	\$74.00	\$78.00
Fees	40.00	45.00	45.00	45.00	50.00
Total	<b>\$101.80</b>	<b>\$110.65</b>	<b>\$114.50</b>	<b>\$119.00</b>	<b>\$128.00</b>
<b>Internet</b>					
Tuition	\$147.00	\$65.65	\$69.50	\$74.00	\$78.00
Fees	0.00	90.20	90.20	90.20	95.20
Total	<b>\$147.00</b>	<b>\$155.85</b>	<b>\$159.70</b>	<b>\$164.20</b>	<b>\$173.20</b>

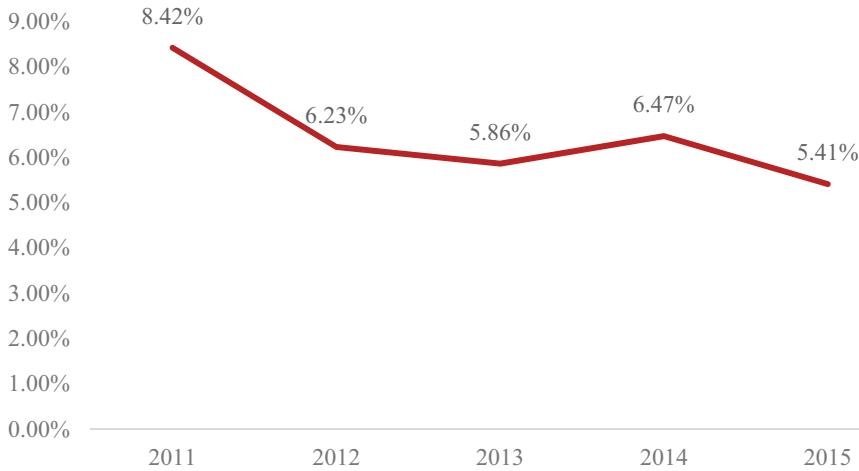
\*For current tuition rates and fees go to NOC website, [www.noc.edu](http://www.noc.edu), and choose the Future Student tab.

### Tuition and Fees by Location Out-of-State (per credit hour)\*

	2011-2012	2012-2013	2013-2014	2014-2015	2015-2016
	Out-of-State	Out-of-State	Out-of-State	Out-of-State	Out-of-State
<b>Tonkawa</b>					
Tuition	\$192.55	\$205.30	\$217.15	\$231.95	\$250.00
Fees	27.20	29.20	31.15	33.30	37.15
Total	<b>\$219.75</b>	<b>\$234.50</b>	<b>\$248.30</b>	<b>\$265.25</b>	<b>\$287.15</b>
<b>Enid</b>					
Tuition	\$192.55	\$205.30	\$217.15	\$231.95	\$250.00
Fees	40.20	42.20	44.15	46.30	50.15
Total	<b>\$232.75</b>	<b>\$247.50</b>	<b>\$261.30</b>	<b>\$278.25</b>	<b>\$300.15</b>
<b>NOC/OSU Gateway</b>					
Tuition	\$192.55	\$205.30	\$217.15	\$231.95	\$250.00
Fees	302.45	305.90	319.05	314.55	324.25
Total	<b>\$495.00</b>	<b>\$511.20</b>	<b>\$536.20</b>	<b>\$546.50</b>	<b>\$574.25</b>
<b>UC – Ponca City</b>					
Tuition	\$192.55	\$205.30	\$217.15	\$231.95	\$250.00
Fees	302.45	70.00	70.00	70.00	75.00
Total	<b>\$495.00</b>	<b>\$275.30</b>	<b>\$287.15</b>	<b>\$301.95</b>	<b>\$325.00</b>
<b>Concurrent &amp; Ed Centers</b>					
Tuition	\$192.55	\$205.30	\$217.15	\$231.95	\$250.00
Fees	302.45	45.00	45.00	45.00	50.00
Total	<b>\$495.00</b>	<b>\$250.30</b>	<b>\$262.15</b>	<b>\$276.95</b>	<b>\$300.00</b>
<b>Internet</b>					
Tuition	\$277.70	\$205.30	\$217.15	\$231.95	\$250.00
Fees	0.00	90.20	90.20	90.20	92.50
Total	<b>\$277.70</b>	<b>\$295.50</b>	<b>\$307.35</b>	<b>\$322.15</b>	<b>\$345.20</b>

\*For current tuition rates and fees go to NOC website, [www.noc.edu](http://www.noc.edu), and choose the Future Student tab.

Percent Change in Tuition



Resident Tuition and Fees by Location (per credit hour)



Room and Board by Location per Semester – Private rooms when available have additional costs

	2011-2012	2012-2013	2013-2014	2014-2015	2015-2016
	Double Room	Double Room	Double Room	Double Room	Double Room
Enid					
Lankard					
5-day Meal Plan	\$2,025	\$2,085	\$2,200	\$2,330	\$2,945
7-day Meal Plan				\$2,630	\$3,285
Earl Butts					
5-day Meal Plan	\$2,025	\$2,085	\$2,200	\$2,330	\$2,545
7-day Meal Plan				\$2,630	\$2,885
Elliot Goulter					
5-day Meal Plan	\$2,375	\$2,435	\$2,550	\$2,700	\$2,945
7-day Meal Plan				\$3,000	\$3,285
Jets					
5-day Meal Plan					\$3,995
7-day Meal Plan					\$4,334
Tonkawa					
Bell, Boehme, Bush-Duvall, Easterling, Markley, and Threlkeld					
5-day Meal Plan	\$1,985	\$2,045	\$2,150	\$2,300	\$2,500
7-day Meal Plan	\$2,195	\$2,280	\$2,400	\$2,550	\$2,750
Mavericks					
5-day Meal Plan					\$3,950
7-day Meal Plan					\$4,200



**Library Services\***

**Library Statistics**

	AY-2014	AY-2015
Visitors to Enid and Tonkawa Libraries	90,000	79,920
Database Instructions	45	47

**Electronic Databases for 2014-2015**

	AY-2014	AY-2015
Session		
• EbscoHost	4,135	5,511
• ProQuest	3,936	4,021
• Gale	2,726	1,301
<b>Total</b>	<b>10,797</b>	<b>10,833</b>

Total Full Texts Retrieved		
• EbscoHost	9,831	10,667
• ProQuest	4,039	2,874
• Gale	2,759	1,298
<b>Total</b>	<b>16,629</b>	<b>14,839</b>

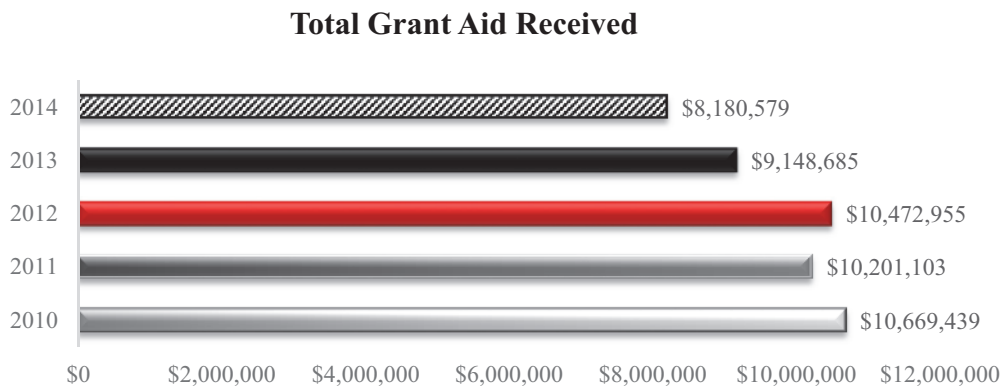
Abstracts Retrieved		
• EbscoHost	14,014	13,840
• ProQuest	843	420
• Gale	59	44
<b>Total</b>	<b>14,916</b>	<b>14,304</b>

\*Data was collected from May of previous year to April of most current year from Library Services

**Financial Aid**

**Financial Aid Profiles**

	2010-2011	2011-2012	2012-2013	2013-2014	2014-2015
<b>Total Grant Aid Received</b>	\$10,669,439	\$10,201,103	\$10,472,955	\$9,148,685	\$8,180,579
<b>Number of Students Who Received Pell Grant</b>	1,549	1,571	1,421	1,238	1,047
<b>Percent of First-time, Full-time Students Receiving any Financial Aid</b>	80%	71%	73%	77%	59%



**Grant Aid**

	2010-2011	2011-2012	2012-2013	2013-2014	2014-2015
Full-time, First-time Students	939	851	720	815	853

	2011-2012		2012-2013		2013-2014		2014-2015	
	Dist. of Aid	Avg. Amount Received	Dist. of Aid	Avg. Amount Received	Dist. of Aid	Avg. Amount Received	Dist. of Aid	Avg. Amount Received
<b>Total Students Receiving Grant Aid*</b>	<b>58%</b>	<b>\$5,020</b>	<b>60%</b>	<b>\$4,959</b>	<b>70%</b>	<b>\$5,204</b>	<b>46%</b>	<b>\$4,915</b>
Federal Grant Aid	38%	4,649	34%	4,530	41%	4,592	25%	4,708
Pell	38%	4,308	33%	4,520	40%	4,444	25%	4,617
Other Federal	18%	932	6%	776	3%	4,900	2%	3,160
State/Local Grant Aid	24%	\$1,620	26%	1,914	28%	1,793	21%	1,827
Institutional Grant Aid	20%	\$3,702	24%	3762	25%	5,002	16%	4,413

\*Full-time, First-time students



## Loans

	2011-2012		2012-2013		2013-2014		2014-2015	
	Dist. of Aid	Avg. Amount Received	Dist. of Aid	Avg. Amount Received	Dist. of Aid	Avg. Amount Received	Dist. of Aid	Avg. Amount Received
<b>Total*</b>	<b>35%</b>	<b>\$5,767</b>	<b>32%</b>	<b>\$10,064</b>	<b>33%</b>	<b>\$4,080</b>	<b>23%</b>	<b>\$4,770</b>
Federal	30%	5,759	32%	4,757	33%	4,019	23%	4,447
Non-federal	5%	5,822	-	5,453	0%	5,087	1%	6,747

\*Full-time, First-time students

## Average Net Price (out-of-pocket expense) for Students Who Receive Title IV Federal Aid by Income\*

	2010-2011	2011-2012	2012-2013	2013-2014	2014-2015
<b>\$0 - 30,000</b>	\$4,380	\$4,898	\$4,791	\$4,882	\$5,905
<b>\$30,001 – 48,000</b>	4,787	5,380	5,368	5,475	5,859
<b>\$48,001 – 75,000</b>	6,958	7,592	7,631	7,955	8,477
<b>\$75,001 – 110,000</b>	8,933	8,776	9,409	9,137	10,066
<b>\$110,001 and more</b>	9,082	10,178	10,188	10,053	10,869

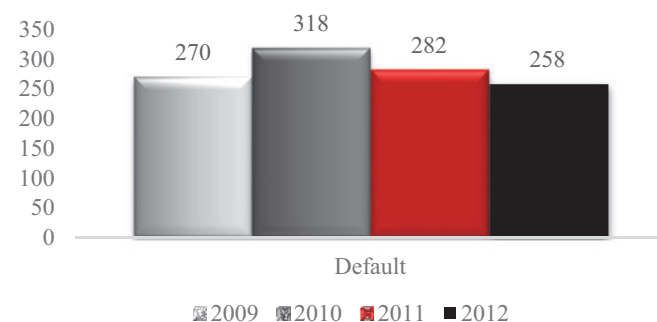
\*Full-time, First-time students

## Default Rates

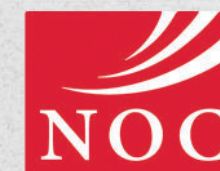
3-Year Cohort Default Rate*	Cohort Yr 2009	Cohort Yr 2010	Cohort Yr 2011	Cohort Yr 2012
Default Rate	25.4%	29.4%	24.1%	18.9%
Students in Default	270	318	282	258
Students in Repay	1,059	1,079	1,170	1,361

\*Data updated on February 21, 2016, from Federal Student Aid – Default Management website,  
<http://ifap.ed.gov/DefaultManagement/finalcdrg.html>

Number of Students in 3-Year Default



**Faculty/Staff**



**NORTHERN**  
Oklahoma College  
TONKAWA | ENID | STILLWATER

Life changing.

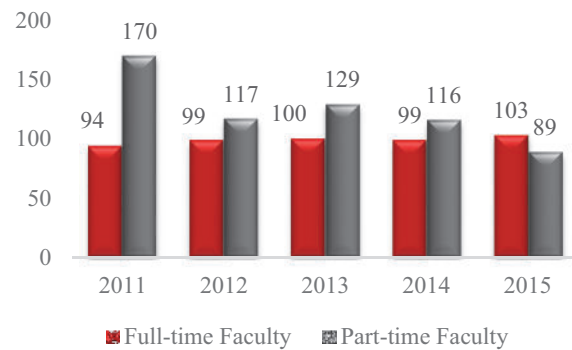


## Faculty/Staff

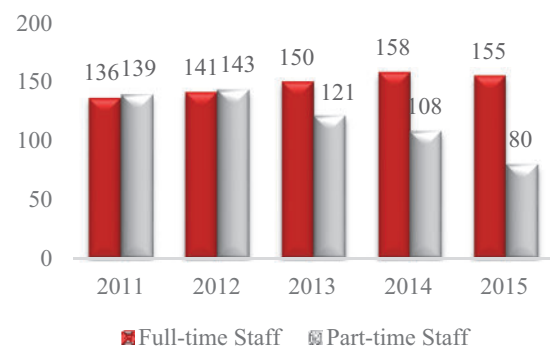
### Profiles

	AY-2011	AY-2012	AY-2013	AY-2014	AY-2015
Full-time Faculty	94	99	100	99	103
Part-time Faculty	170	117	129	116	89
Full-time Staff	136	141	150	158	155
Part-time Staff	139	143	121	108	80
Student-Faculty Ratio	15:1	17:1	17:1	17:1	17:1

Number of Faculty



Number of Staff



### Faculty/Staff Demographics\*

#### Full-time Faculty

	AY-2011	AY-2013	AY-2015
Men	39	42	47
Women	55	58	56
<b>Total</b>	<b>94</b>	<b>100</b>	<b>103</b>
American Indian or Alaska Native	6	0	0
Asian	0	0	0
Black or African American	0	1	4
Hispanic/Latino	0	0	0
White	61	99	99
Two or more races	27	0	0
Unknown	0	0	0

\*Demographics had not been accurately collected to this point, and IPEDS did not report demographics in 2012, 2014.

### Full-time Staff

	AY-2011	AY-2013	AY-2015
Men	50	53	58
Women	86	97	97
<b>Total</b>	<b>136</b>	<b>150</b>	<b>155</b>
American Indian or Alaska Native	4	1	4
Asian	1	0	0
Black or African American	3	5	1
Hispanic/Latino	2	2	3
White	126	141	146
Two or more races	0	0	1
Unknown	0	1	0

\*IPEDS did not report demographics in 2012, 2014

### Part-time Faculty

	AY-2011	AY-2013	AY-2015
Men	77	53	35
Women	93	76	54
<b>Total</b>	<b>170</b>	<b>129</b>	<b>89</b>
American Indian or Alaska Native	7	0	0
Asian	0	0	0
Black or African American	0	0	0
Hispanic/Latino	4	0	0
White	159	129	89
Two or more races	0	0	0

\*IPEDS did not report demographics in 2012, 2014

### Part-time Staff

	AY-2011	AY-2013	AY-2015
Men	61	56	27
Women	78	65	53
<b>Total</b>	<b>139</b>	<b>121</b>	<b>80</b>
American Indian or Alaska Native	5	0	0
Asian	1	0	0
Black or African American	1	0	0
Hispanic/Latino	11	0	0
White	121	96	80
Two or more races	0	25	0

\*IPEDS did not report demographics in 2012, 2014





## Finances

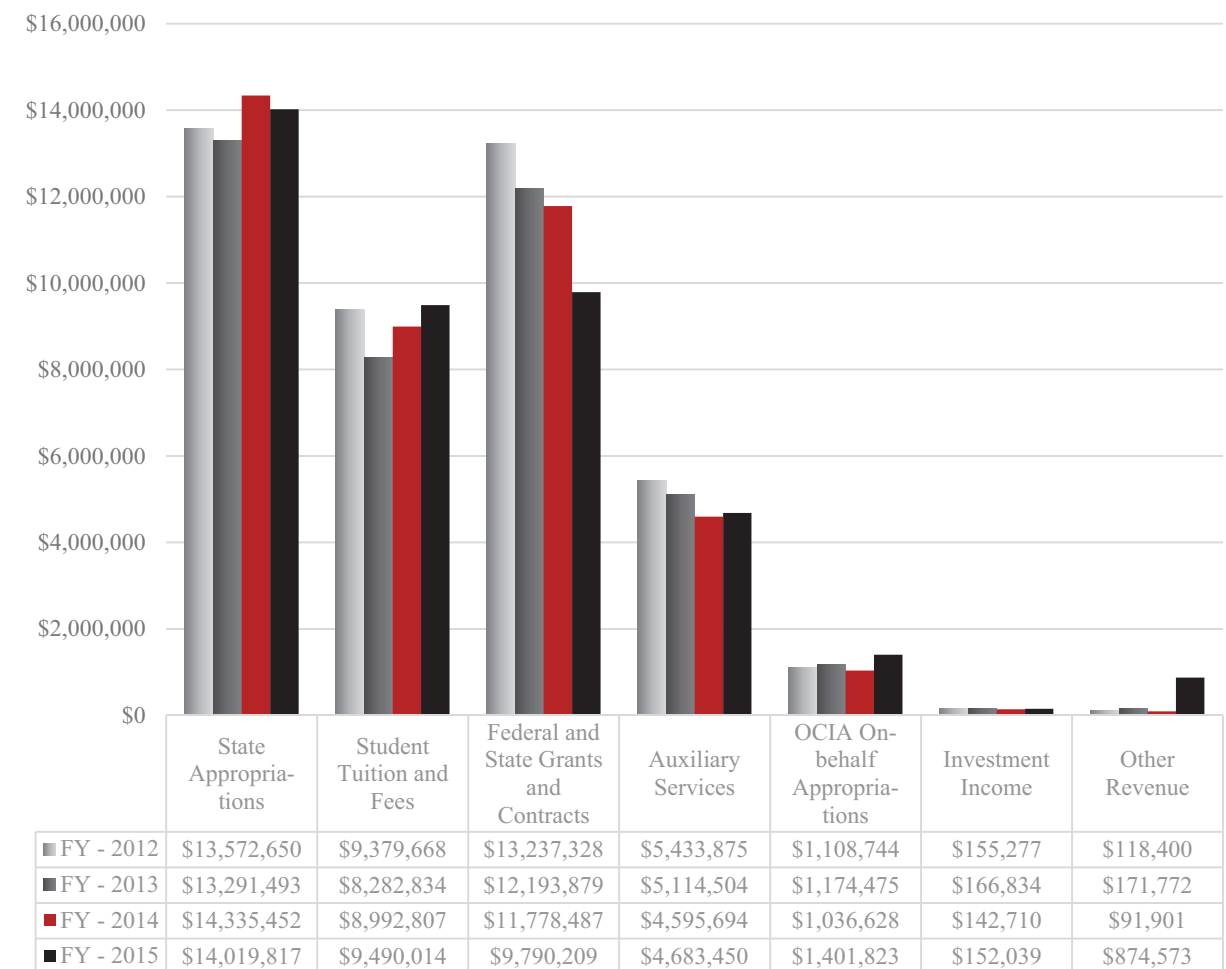
## Finances

### Core Revenues\* – FY – 2015

	Total	Percent
State Appropriations	\$14,019,814	35%
Student Tuition and Fees (net of scholarship allowances)	9,490,014	23%
Federal and State Grants and Contracts	9,790,209	24%
Auxiliary Services	4,683,450	12%
OCIA On-behalf Appropriations	1,401,823	3%
Investment Income	157,039	0%
Other Revenues	874,573	2%
<b>Total Revenue</b>	<b>\$40,416,922</b>	

\*For Fiscal Year ending on June 30, 2015. Data obtained from Office of Financial Affairs

### Core Revenues



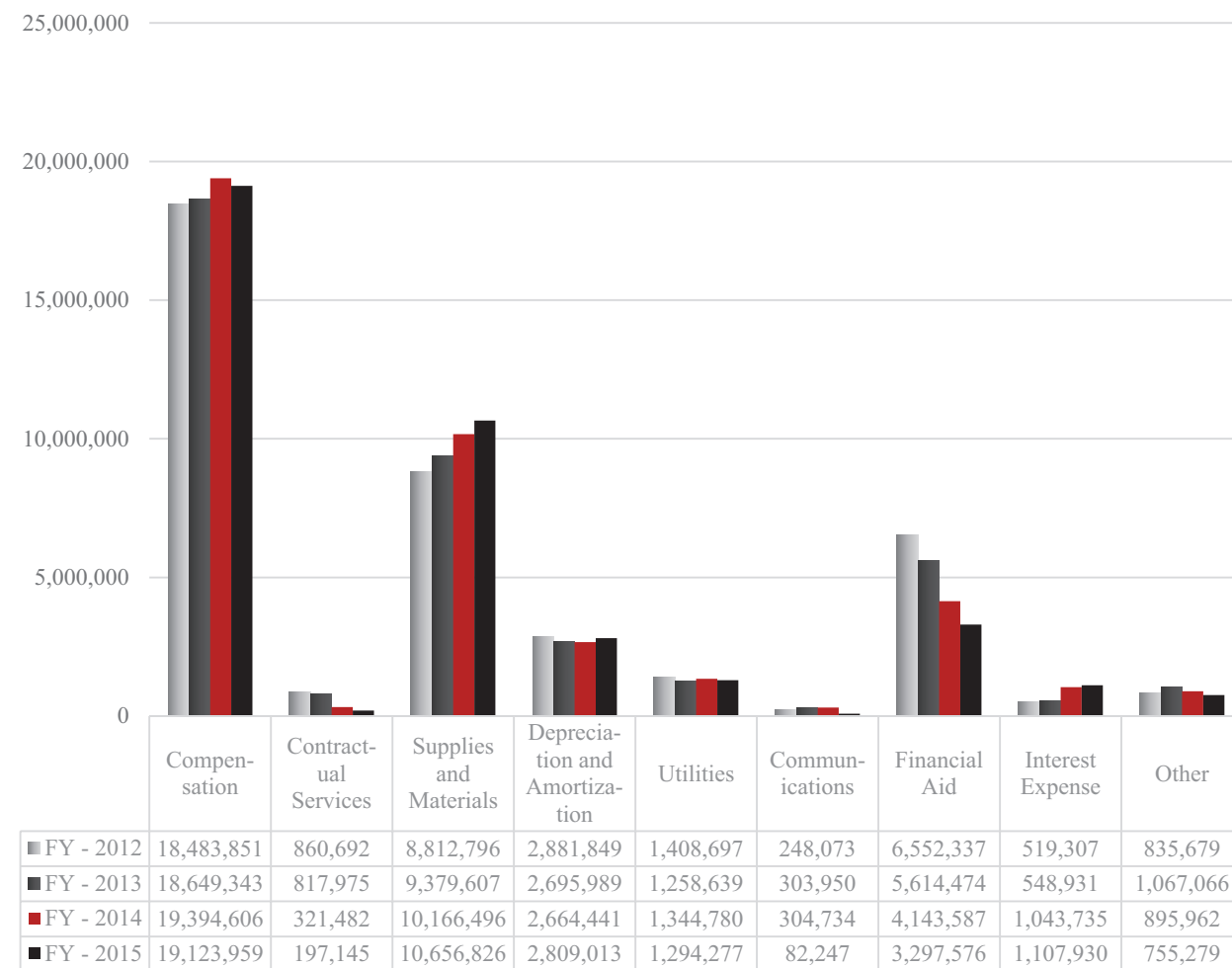


## Core Expenses\*– FY – 2015

	Total	Percent
Compensation	\$19,123,959	49%
Contractual Services	197,145	1%
Supplies and Materials	10,656,826	27%
Depreciation and Amortization	2,809,013	7%
Utilities	1,294,277	3%
Communications	82,247	0%
Financial Aid	3,297,576	8%
Interest Expense	1,107,930	3%
Other	755,279	2%
<b>Total Expense</b>	<b>\$39,324,252</b>	

\*For Fiscal Year ending on June 30, 2015. Data was obtained from Office of Financial Affairs

Core Expenses

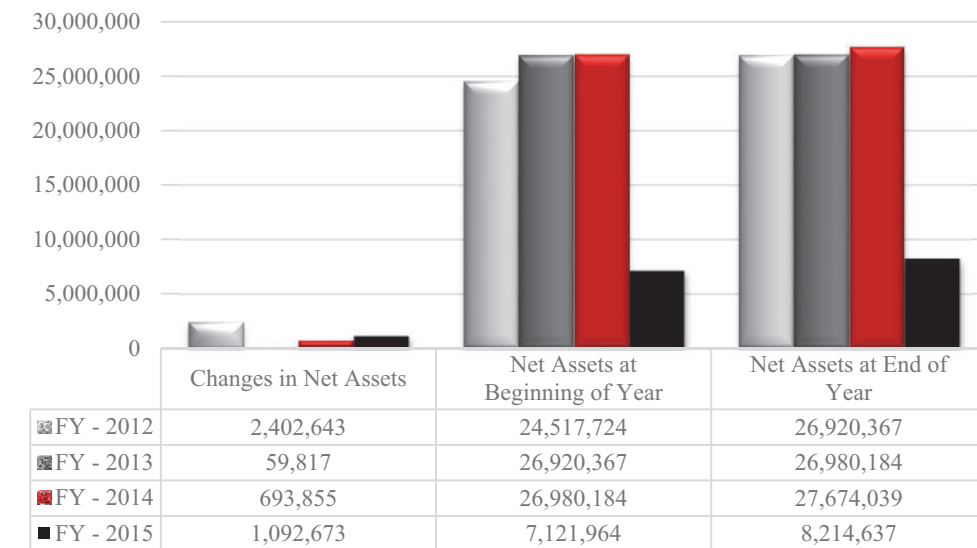


## Assets – FY – 2015\*

Changes in Net Assets	<b>\$1,092,673</b>
Net Assets at Beginning of Year	<b>\$7,121,964</b>
Net Assets at End of Year	<b>\$8,214,637</b>

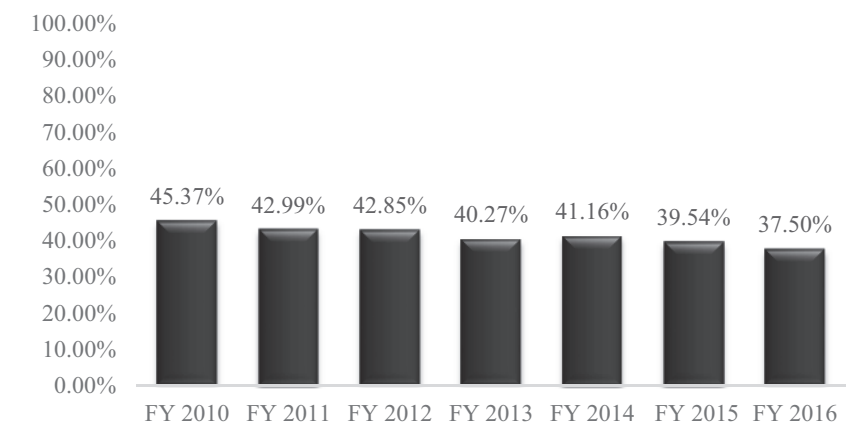
\*For Fiscal Year ending on June 30, 2015. Data was obtained from Office of Financial Affairs

Assets



Adjustment to net position for adoption of 6A5B Pension Obligation.

Percentage of Revenue from State Appropriations







## Campus Safety



**NORTHERN**  
Oklahoma College  
TONKAWA | ENID | STILLWATER

Life changing.

## Campus Safety and Security\*

### Criminal Offenses

	2011-2012		2012-2013		2013-2014		2014-2015	
	Tonkawa	Enid	Tonkawa	Enid	Tonkawa	Enid	Tonkawa	Enid
<b>On Campus</b>								
Murder	0	0	0	0	0	0	0	0
Negligent Manslaughter							0	0
Sex Offenses – Forcible	0	0	0	0	0	0	0	0
Rape							0	0
Fondling							0	0
Sex Offenses – Non-forcible							0	0
Incest							0	0
Statutory Rape							0	0
Robbery	0	0	0	0	0	0	0	0
Aggravated Assault	0	0	0	0	0	0	0	0
Burglary	0	0	0	0	0	0	0	0
Motor Vehicle Theft	0	0	0	0	0	0	0	0
Arson	0	0	0	0	0	0	0	0
<b>On-Campus – Student Housing</b>								
Murder	0	0	0	0	0	0	0	0
Negligent Manslaughter							0	0
Sex Offenses – Forcible	0	0	0	0	0	0	0	0
Rape							0	0
Fondling							0	0
Sex Offenses – Non-forcible							0	0
Incest							0	0
Statutory Rape							0	0
Robbery	0	0	0	0	0	0	0	0
Aggravated Assault	0	0	0	0	0	0	0	0
Burglary	0	0	0	0	0	0	0	0
Motor Vehicle Theft	0	0	0	0	0	0	0	0
Arson	0	0	0	0	0	0	0	0



## Disciplinary Actions

	2011-2012		2012-2013		2013-2014		2014-2015	
	Tonkawa	Enid	Tonkawa	Enid	Tonkawa	Enid	Tonkawa	Enid
<b>On Campus</b>								
Weapons: Carrying, Possessing, etc.	0	0	1	0	0	0	0	0
Drug Abuse Violations	5	0	1	0	3	0	0	2
Liquor Law Violations	30	22	26	21	25	14	37	32
<b>On-Campus – Student Housing</b>								
Weapons: Carrying, Possessing, etc.	0	0	0	0	0	0	0	0
Drug Abuse Violations	5	0	1	0	3	0	0	2
Liquor Law Violations	30	22	26	21	25	14	37	32

## Hate Crimes

	2011-2012		2012-2013		2013-2014		2014-2015	
	Tonkawa	Enid	Tonkawa	Enid	Tonkawa	Enid	Tonkawa	Enid
<b>On Campus</b>								
Murder	0	0	0	0	0	0	0	0
Sex Offenses	0	0	0	0	0	0	0	0
Robbery	0	0	0	0	0	0	0	0
Aggravated Assault	0	0	0	0	0	0	0	0
Burglary	0	0	0	0	0	0	0	0
Motor Vehicle Theft	0	0	0	0	0	0	0	0
Arson	0	0	0	0	0	0	0	0
Simple Assault	0	0	0	0	0	0	0	0
Larceny-theft	0	0	0	0	0	0	0	0
Intimidation	0	0	0	0	0	0	0	0
Destruction/damage/vandalism	0	0	0	0	0	0	0	0
<b>On-Campus – Student Housing</b>								
Murder	0	0	0	0	0	0	0	0
Sex Offenses	0	0	0	0	0	0	0	0
Robbery	0	0	0	0	0	0	0	0
Aggravated Assault	0	0	0	0	0	0	0	0
Burglary	0	0	0	0	0	0	0	0
Motor Vehicle Theft	0	0	0	0	0	0	0	0
Arson	0	0	0	0	0	0	0	0
Simple Assault	0	0	0	0	0	0	0	0
Larceny-theft	0	0	0	0	0	0	0	0
Intimidation	0	0	0	0	0	0	0	0
Destruction/damage/vandalism	0	0	0	0	0	0	0	0

## Arrests

	2011-2012		2012-2013		2013-2014		2014-2015	
	Tonkawa	Enid	Tonkawa	Enid	Tonkawa	Enid	Tonkawa	Enid
<b>On Campus</b>								
Weapons: Carrying, Possessing, etc.	0	0	0	0	0	0	0	0
Drug Abuse Violations	0	0	1	0	0	0	0	0
Liquor Law Violations	3	0	2	0	0	0	0	0
<b>On-Campus - Student Housing</b>								
Weapons: Carrying, Possessing, etc.	0	0	0	0	0	0	0	0
Drug Abuse Violations	0	0	1	0	0	0	0	0
Liquor Law Violations	0	0	0	0	0	0	0	0

## Fire Statistics

	2011-2012	2012-2013	2013-2014	2014-2015
	Tonkawa	Tonkawa	Tonkawa	Tonkawa
<b>Fires</b>				
Threlkeld Hall	0	0	0	0
Bell Hall	0	0	0	0
Easterling Hall	0	0	0	0
Boehme Hall	0	0	0	0
Markley Hall	0	0	0	0
Bush Hall	0	0	0	0
<b>Injuries</b>				
Threlkeld Hall	0	0	0	0
Bell Hall	0	0	0	0
Easterling Hall	0	0	0	0
Boehme Hall	0	0	0	0
Markley Hall	0	0	0	0
Bush Hall	0	0	0	0
<b>Deaths</b>				
Threlkeld Hall	0	0	0	0
Bell Hall	0	0	0	0
Easterling Hall	0	0	0	0
Boehme Hall	0	0	0	0
Markley Hall	0	0	0	0
Bush Hall	0	0	0	0

	2011-2012	2012-2013	2013-2014	2014-2015
	Enid	Enid	Enid	Enid
<b>Fires</b>				
Earl Butts Hall	0	0	0	0
Elliot-Goulter Hall	0	0	0	0
Lankard Hall	0	0	0	0
<b>Injuries</b>				
Earl Butts Hall	0	0	0	0
Elliot-Goulter Hall	0	0	0	0
Lankard Hall	0	0	0	0
<b>Deaths</b>				
Earl Butts Hall	0	0	0	0
Elliot-Goulter Hall	0	0	0	0
Lankard Hall	0	0	0	0

\*Information obtained from <http://ope.ed.gov/campussafety/#/> as submitted in Clery Report by NOC updated in October for previous year.



NOC Location Information



## NOC Location Information

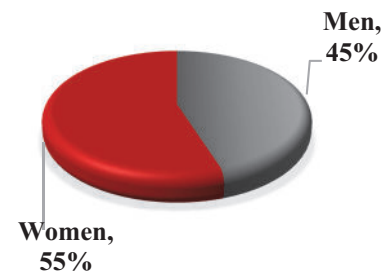
### Tonkawa

Data collected from Student Information Systems for the fall semester of the year reported. Data includes only information for students physically located on site (excludes online and high school sites if reported separately).

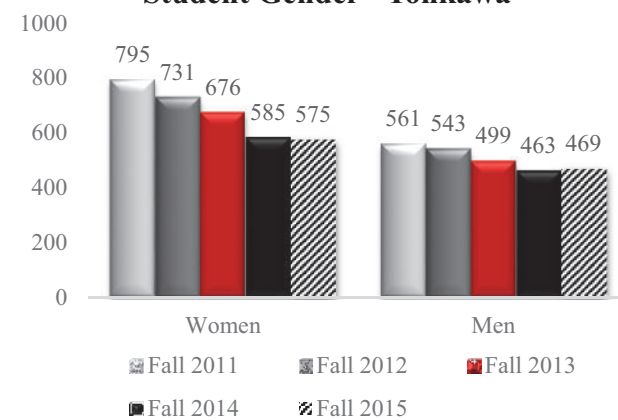
#### Student Gender - Tonkawa

	Fall 2011	Fall 2012	Fall 2013	Fall 2014	Fall 2015
Men Full-time	450	423	406	315	370
Men Part-time	111	120	93	148	99
<b>Total</b>	<b>561</b>	<b>543</b>	<b>499</b>	<b>463</b>	<b>469</b>
Women Full-time	596	543	512	341	412
Women Part-time	199	188	164	244	163
<b>Total</b>	<b>795</b>	<b>731</b>	<b>676</b>	<b>585</b>	<b>575</b>

Student Gender Fall  
2015 - Tonkawa



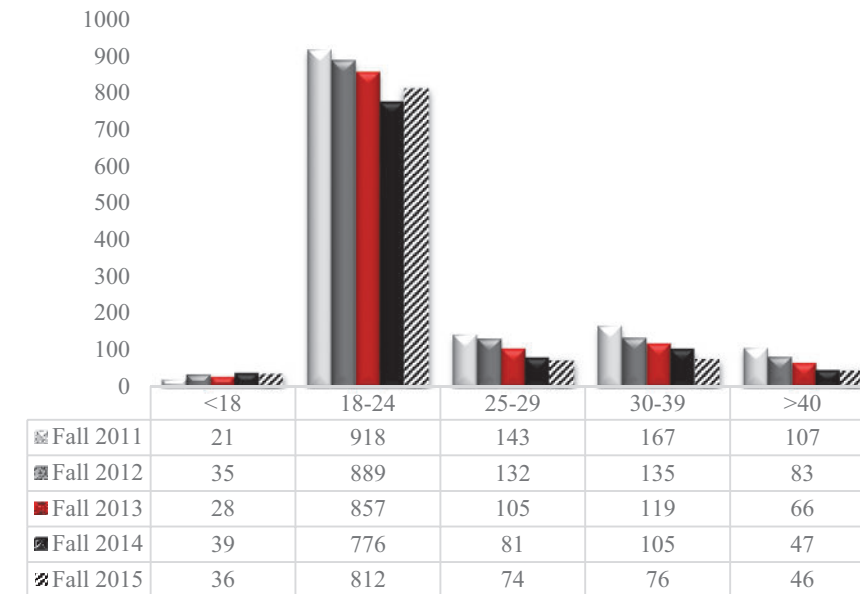
Student Gender - Tonkawa



#### Student Age - Tonkawa

	Men					Women				
	Fall 2011	Fall 2012	Fall 2013	Fall 2014	Fall 2015	Fall 2011	Fall 2012	Fall 2013	Fall 2014	Fall 2015
<18	8	11	10	15	11	13	24	18	24	25
18-24	415	419	407	376	391	503	470	450	400	421
25-29	50	46	28	28	35	93	86	77	53	39
30-39	58	41	36	31	18	109	94	83	74	58
>40	30	26	18	13	14	77	57	48	34	32
<b>Total</b>	<b>561</b>	<b>543</b>	<b>499</b>	<b>463</b>	<b>469</b>	<b>795</b>	<b>731</b>	<b>676</b>	<b>585</b>	<b>575</b>

### Student Age Distribution - Tonkawa



#### Student Race/Ethnicity - Tonkawa

	Fall 2011	Fall 2012	Fall 2013	Fall 2014	Fall 2015
American Indian or Alaska Native	210	203	168	155	159
Asian	7	7	4	7	7
Black or African American	47	41	30	35	53
Native Hawaiian or other Pacific Islander	-	-	-	-	3
Hispanic/Latino	79	77	74	53	80
White	987	927	883	753	706
Unknown	6	2	2	26	0
Non-resident/Alien	20	17	14	19	20
2 or more	-	-	-	-	16

#### Student Enrollment - Tonkawa

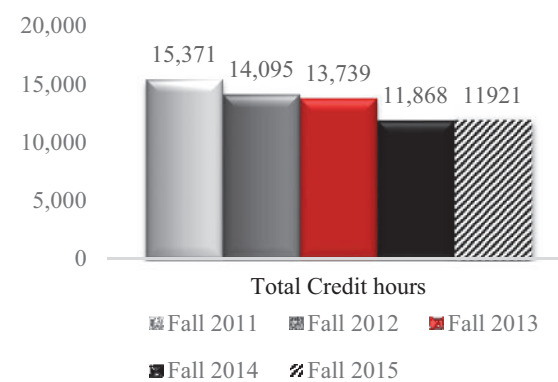
	Fall 2011	Fall 2012	Fall 2013	Fall 2014	Fall 2015
Full-time Students	1,046	966	918	656	782
Part-time Students	310	308	257	392	262
<b>Total Enrollment</b>	<b>1,356</b>	<b>1,274</b>	<b>1,175</b>	<b>1,048</b>	<b>1,044</b>

### Courses – Tonkawa\*

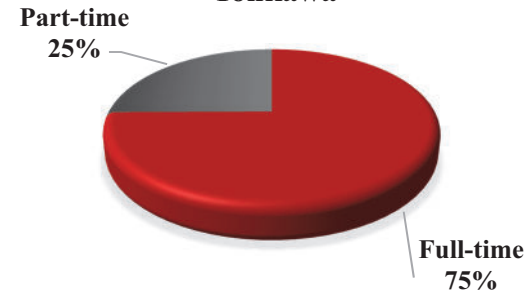
	Fall 2011	Fall 2012	Fall 2013	Fall 2014	Fall 2015
Total Course Section Offerings	321	301	289	277	276
Total Credit Hours Generated	15,371	14,095	13,739	11,868	11,921

\*Fall only

**Total Credit Hours Generated - Tonkawa**



**Student Enrollment Fall 2015 - Tonkawa**



### Degrees Awarded - Tonkawa

	AY-2014	AY-2015
Total Graduates	370	369
Agriculture, Science, and Engineering	83	69
Business	59	67
Fine Arts	16	17
Health, Physical Ed, and Recreation	10	18
Language Arts	32	36
Math	3	3
Nursing	61	48
Social Science	60	75
Arts and Sciences	72	64
Total Degrees Awarded	402	397

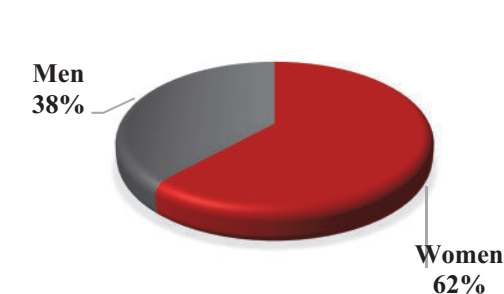
### Enid

Data collected from Student Information Systems for the fall semester of the year reported. Data includes only information for students physically located on site (excludes online and high school sites if reported separately).

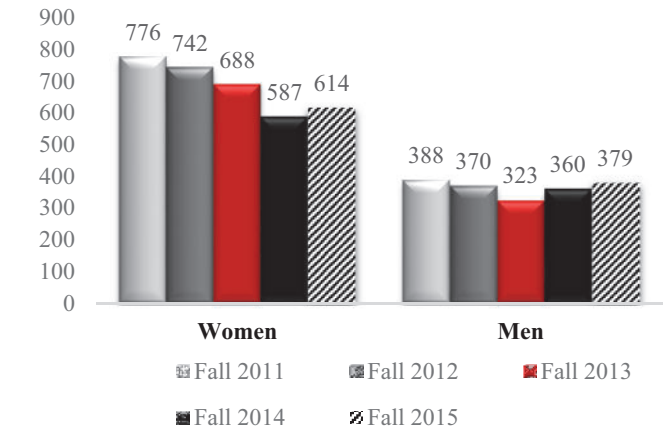
### Student Gender - Enid

	Fall 2011	Fall 2012	Fall 2013	Fall 2014	Fall 2015
Men Full-time	273	257	243	205	274
Men Part-time	115	113	80	155	105
<b>Total</b>	<b>388</b>	<b>370</b>	<b>323</b>	<b>360</b>	<b>379</b>
Women Full-time	444	432	384	274	357
Women Part-time	332	310	304	313	257
<b>Total</b>	<b>776</b>	<b>742</b>	<b>688</b>	<b>587</b>	<b>614</b>

**Student Gender Fall 2015 - Enid**



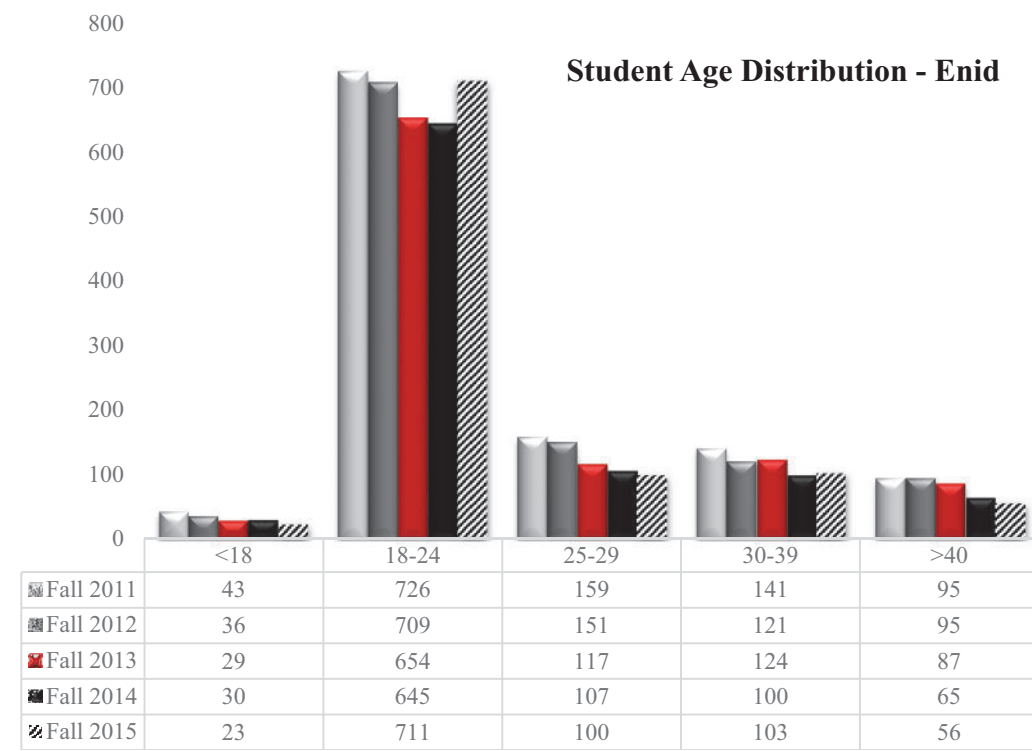
**Student Gender - Enid**



### Student Age - Enid

	Men					Women				
	Fall 2011	Fall 2012	Fall 2013	Fall 2014	Fall 2015	Fall 2011	Fall 2012	Fall 2013	Fall 2014	Fall 2015
<18	12	11	8	13	11	31	25	21	17	12
18-24	287	276	248	279	308	439	433	406	366	403
25-29	36	38	23	26	28	123	113	94	81	72
30-39	32	27	27	27	25	109	94	97	73	78
>40	21	18	17	15	7	74	77	70	50	49
<b>Total</b>	<b>388</b>	<b>370</b>	<b>323</b>	<b>360</b>	<b>379</b>	<b>776</b>	<b>742</b>	<b>688</b>	<b>587</b>	<b>614</b>





#### Student Race/Ethnicity - Enid

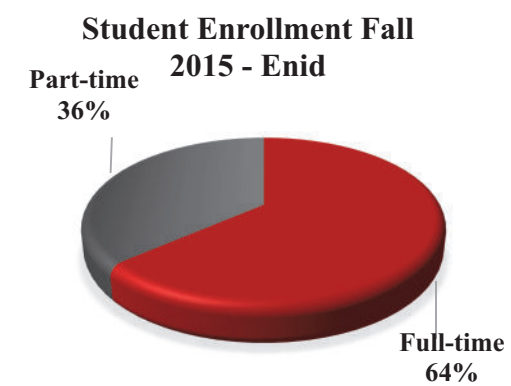
	Fall 2011	Fall 2012	Fall 2013	Fall 2014	Fall 2015
American Indian or Alaska Native	60	55	60	72	78
Asian	11	19	14	16	9
Black or African American	55	58	53	46	44
Native Hawaiian or other Pacific Islander	-	-	-	-	14
Hispanic/Latino	84	83	90	98	129
White	936	888	790	691	703
Unknown	9	4	0	18	0
Non-resident/Alien	9	5	4	6	10
Two or more	-	-	-	-	6

#### Student Enrollment - Enid

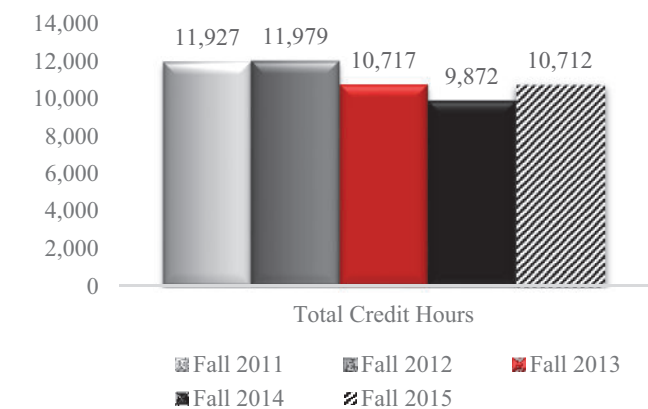
	Fall 2011	Fall 2012	Fall 2013	Fall 2014	Fall 2015
Full-time Students	717	689	627	479	631
Part-time Students	447	423	384	468	362
<b>Total Enrollment</b>	<b>1,164</b>	<b>1,112</b>	<b>1,011</b>	<b>948</b>	<b>993</b>

#### Courses - Enid

	Fall 2011	Fall 2012	Fall 2013	Fall 2014	Fall 2015
Total Course Section Offerings	210	214	197	201	200
Total Credit Hours Generated	11,927	11,797	10,717	9,872	10,712



#### Total Credit Hours Generated - Enid



#### Degrees Awarded – Enid

	AY-2014	AY-2015
Total Graduates	214	138
Agriculture, Science, and Engineering	19	14
Business	32	26
Fine Arts	2	0
Health, Physical Ed, and Recreation	24	6
Language Arts	19	16
Math	3	3
Nursing	60	39
Social Science	40	30
Arts and Sciences	41	19
Other	1	0
<b>Total Degrees Awarded</b>	<b>241</b>	<b>153</b>

## Stillwater

Data collected from Student Information Systems for the fall semester of the year reported. Data includes only information for students on site (excludes online and high school sites if reported separately).

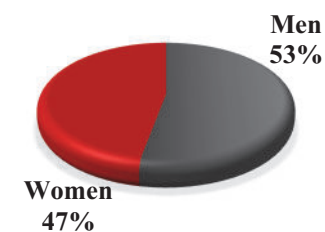
### Student Gender - Stillwater

	Fall 2011	Fall 2012*	Fall 2013	Fall 2014*	Fall 2015*
<b>Men Full-time</b>					
• NOC	435	370	335	244	330
Total	435	370	335	244	330
<b>Men Part-time</b>					
• NOC	166	148	190	299	189
• OSU	331	327	391	417	416
Total	497	475	581	716	605
<b>Total Men</b>	<b>932</b>	<b>844</b>	<b>916</b>	<b>960</b>	<b>935</b>

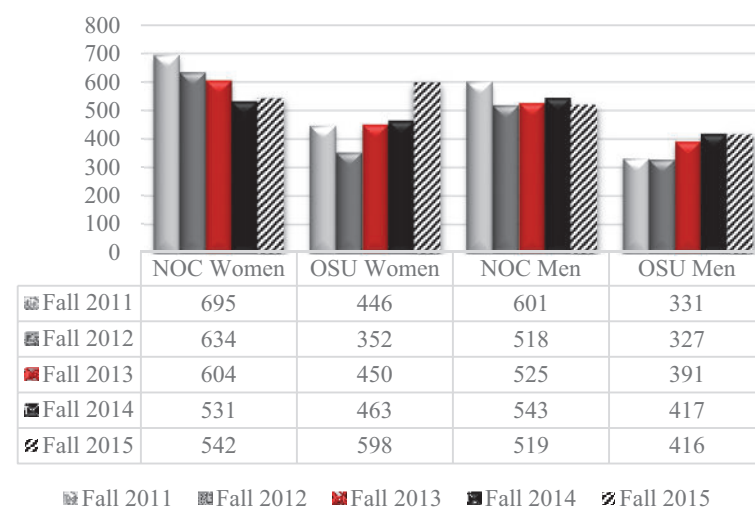
<b>Women Full-time</b>					
• NOC	412	368	346	209	310
Total	412	368	346	209	310
<b>Women Part-time</b>					
• NOC	283	266	258	322	232
• OSU	446	352	450	463	598
Total	729	618	708	785	830
<b>Total Women</b>	<b>1,141</b>	<b>984</b>	<b>1,054</b>	<b>994</b>	<b>1,140</b>

\*Several students were coded as both NOC and OSU.

Student Gender Fall 2015 - Stillwater



Student Gender - Stillwater



### Student Age - Stillwater

Women	Fall 2011	Fall 2012*	Fall 2013	Fall 2014*	Fall 2015
<b>&lt;18</b>					
• NOC	11	8	9	12	7
• OSU	0	1	0	1	2
Total	11	9	9	13	9
<b>18-24</b>					
• NOC	471	447	444	389	418
• OSU	431	334	433	454	586
Total	902	781	877	843	1,004
<b>25-29</b>					
• NOC	84	90	55	48	47
• OSU	6	9	8	2	8
Total	90	99	63	50	55
<b>30-39</b>					
• NOC	74	46	60	56	48
• OSU	5	4	3	3	4
Total	79	50	63	59	52
<b>&gt;40</b>					
• NOC	55	43	36	25	23
• OSU	4	4	6	4	1
Total	59	47	42	29	24
<b>Total</b>	<b>1,141</b>	<b>984</b>	<b>1,054</b>	<b>994</b>	<b>1,144</b>

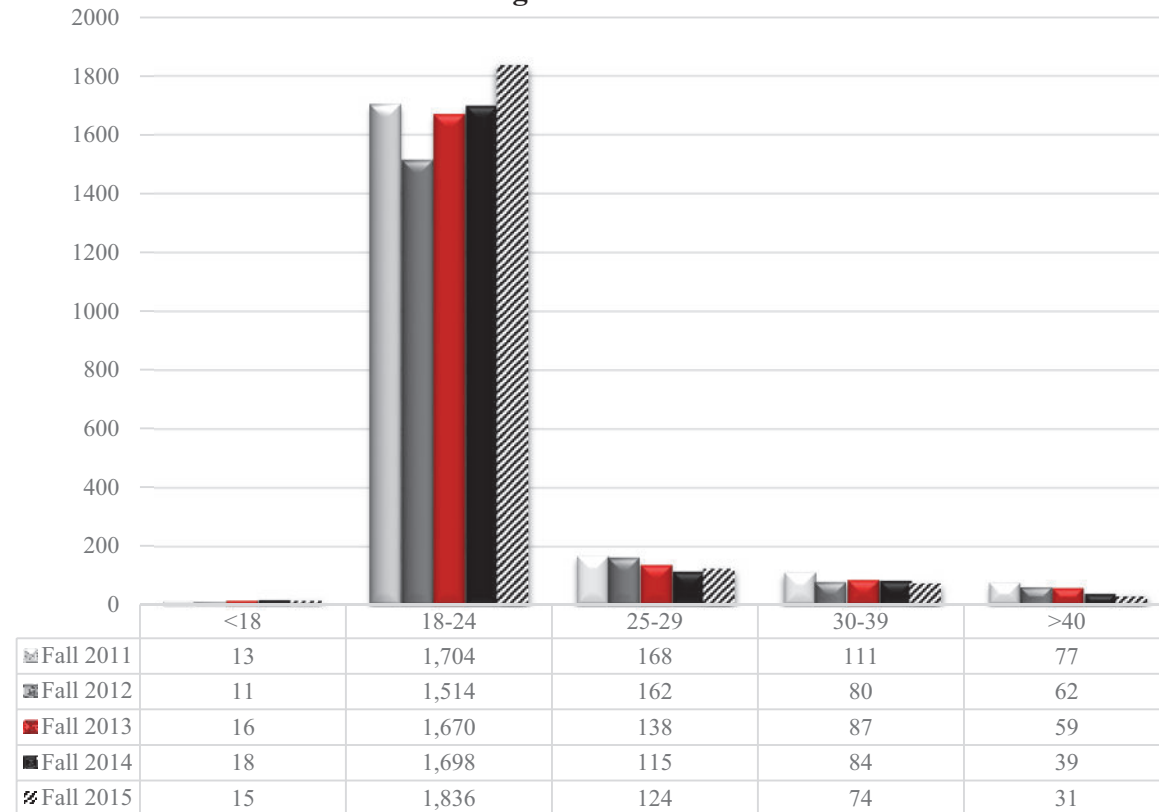
\*Several students were coded as both NOC and OSU.

Men	Fall 2011	Fall 2012*	Fall 2013	Fall 2014*	Fall 2015
<b>&lt;18</b>					
• NOC	2	1	5	5	5
• OSU	0	1	2	0	1
Total	2	2	7	5	6
<b>18-24</b>					
• NOC	495	431	435	466	441
• OSU	307	302	358	389	391
Total	802	733	793	855	832
<b>25-29</b>					
• NOC	63	51	53	46	49
• OSU	15	12	22	19	20
Total	78	63	75	65	69
<b>30-39</b>					
• NOC	25	24	17	18	20
• OSU	7	8	7	7	2
Total	32	32	24	25	22
<b>&gt;40</b>					
• NOC	16	11	15	8	4
• OSU	2	4	2	2	3
Total	18	15	17	10	7
<b>Total</b>	<b>932</b>	<b>844</b>	<b>916</b>	<b>960</b>	<b>936</b>

\*Several students were coded as both NOC and OSU.



**Student Age Distribution - Stillwater**



**Student Race/Ethnicity - Stillwater**

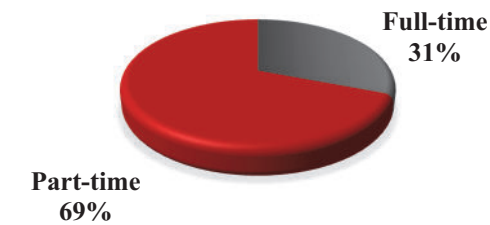
	Fall 2011	Fall 2012	Fall 2013	Fall 2014	Fall 2015
American Indian or Alaska Native	208	203	190	258	267
Asian	29	31	24	36	27
Black or African American	202	160	164	159	200
Native Hawaiian or other Pacific Islander	-	-	-	-	7
Hispanic/Latino	88	57	88	74	113
White	1,492	1,338	1,456	1,273	1,274
Unknown	37	22	27	92	3
Non-resident/Alien	17	17	21	65	150
Two or more	-	-	-	-	34

**Student Enrollment - Stillwater**

	Fall 2011	Fall 2012*	Fall 2013	Fall 2014*	Fall 2015
<b>Full-time Students</b>					
• NOC	847	738	681	453	640
• OSU	7	10	3	5	0
<b>Total</b>	<b>854</b>	<b>747</b>	<b>684</b>	<b>458</b>	<b>640</b>
<b>Part-time Students</b>					
• NOC	449	414	448	621	421
• OSU	770	669	838	880	1,014
<b>Total</b>	<b>1,219</b>	<b>1,081</b>	<b>1,286</b>	<b>1,501</b>	<b>1,435</b>
<b>Total Enrollment</b>	<b>2,073</b>	<b>1,828</b>	<b>1,970</b>	<b>1,959</b>	<b>2,075</b>

\*Several students were coded as both NOC and OSU.

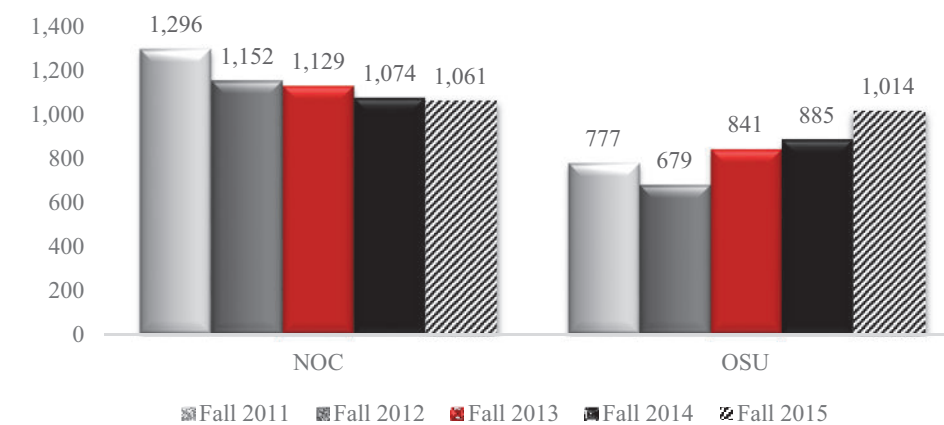
**Student Enrollment Fall 2015 - Stillwater**



**Student Enrollment Fall 2015 - NOC/OSU**



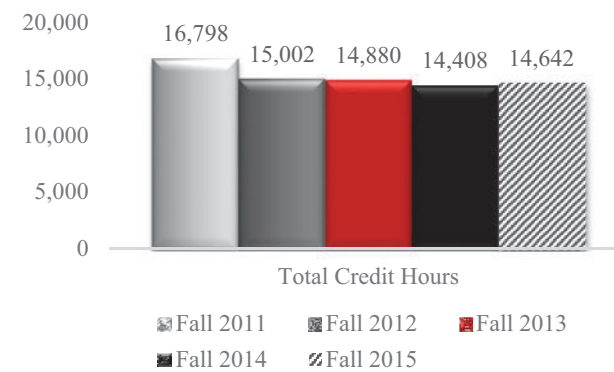
**Student Enrollment - Stillwater**



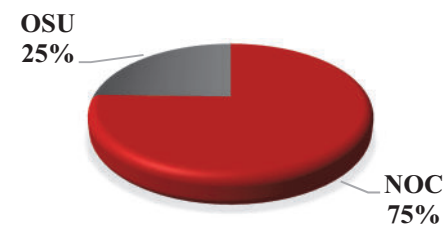
### Courses - Stillwater

	Fall 2011	Fall 2012	Fall 2013	Fall 2014	Fall 2015
Total Course Section Offerings	233	220	204	346	217
Total Credit Hours Generated	16,798	15,002	14,880	14,408	14,642
• NOC	13,786	12,278	11,739	11,181	11,041
• OSU	3,012	2,724	3,141	3,227	3,601

**Total Credit Hours Generated - Stillwater**



**Total Credit Hours Generated Fall 2015 - NOC/OSU**



### Graduate Location – Stillwater

	AY-2014	AY-2015
NOC Gateway Graduates	67	33
NOC Fountain Square Graduates	28	30
<b>Total</b>	<b>95</b>	<b>63</b>

### Degrees Awarded - Stillwater

	AY-2014	AY-2015
Nursing	28	35
Child Development	6	3
Social Science	19	12
Business	15	13
Arts and Sciences	33	14
Other Degrees	4	2
<b>Total Degrees Awarded</b>	<b>105</b>	<b>79</b>

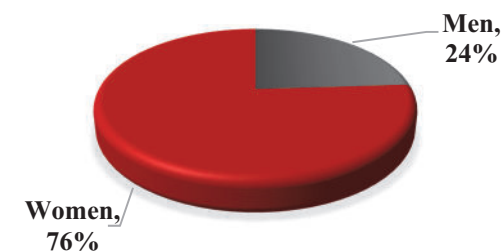
### University Center Ponca City

Data collected from Student Information Systems for the fall semester of the year reported. Data includes only information for students physically located at University Center (excludes online and high school sites if reported separately).

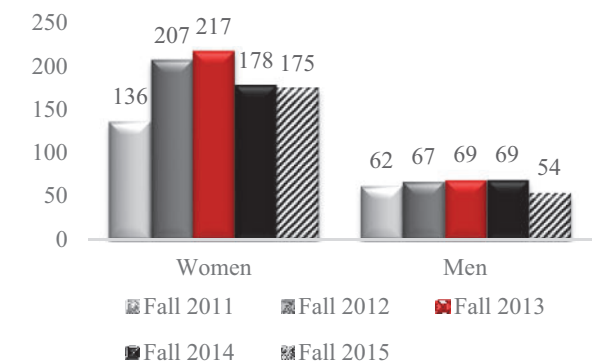
#### Student Gender – University Center Ponca City

	Fall 2011	Fall 2012	Fall 2013	Fall 2014	Fall 2015
Men Full-time	29	33	26	13	19
Men Part-time	33	34	43	56	35
<b>Total</b>	<b>62</b>	<b>67</b>	<b>69</b>	<b>69</b>	<b>54</b>
Women Full-time	65	94	95	46	52
Women Part-time	71	113	122	132	123
<b>Total</b>	<b>136</b>	<b>207</b>	<b>217</b>	<b>178</b>	<b>175</b>

**Student Gender Fall 2015 - University Center Ponca City**



**Student Gender - University Center Ponca City**

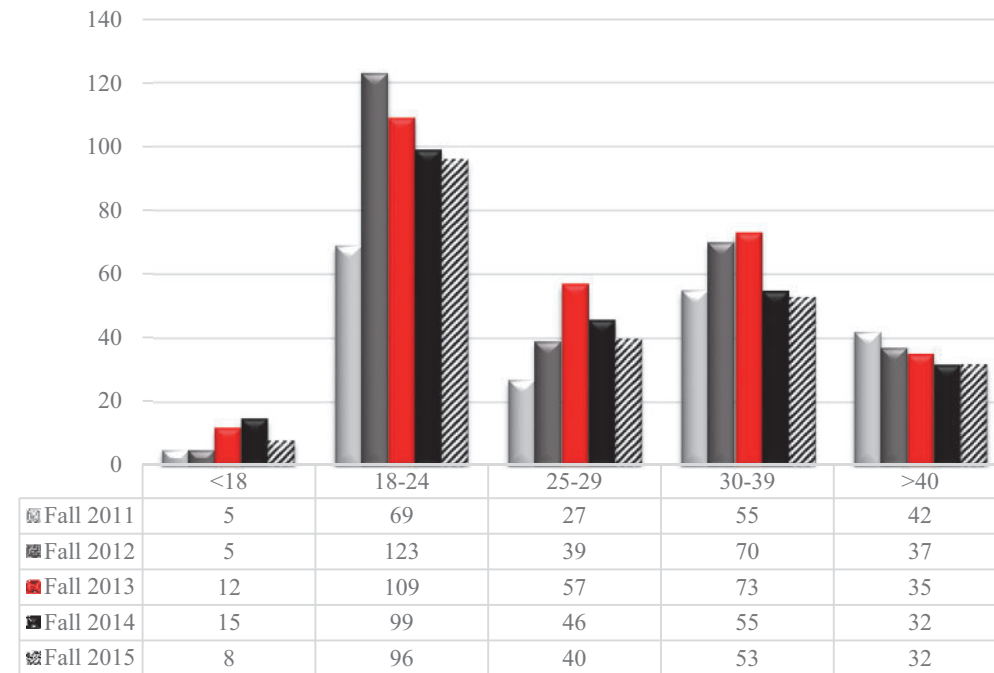


#### Student Age – University Center Ponca City

	Fall 2011	Fall 2012	Fall 2013	Fall 2014	Fall 2015
<18	5	5	12	15	8
18-24	69	123	109	99	96
25-29	27	39	57	46	40
30-39	55	70	73	55	53
>40	42	37	35	32	32
<b>Total</b>	<b>198</b>	<b>274</b>	<b>286</b>	<b>247</b>	<b>229</b>



**Student Age Distribution - University Center Ponca City**



**Student Race/Ethnicity – University Center Ponca City**

	Fall 2011	Fall 2012	Fall 2013	Fall 2014	Fall 2015
American Indian or Alaska Native	50	50	40	36	37
Asian	0	0	1	3	4
Black or African American	10	10	13	8	7
Native Hawaiian or other Pacific Islander	-	-	-	-	0
Hispanic/Latino	7	15	12	13	13
White	130	199	220	185	168
Unknown	0	0	0	1	0
Non-resident/Alien	1	0	0	1	0
2 or more	-	-	-	-	0

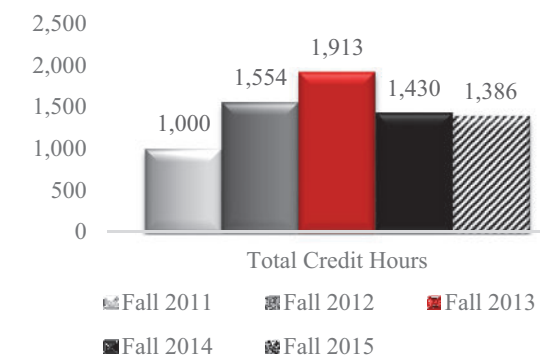
**Student Enrollment – University Center Ponca City**

	Fall 2011	Fall 2012	Fall 2013	Fall 2014	Fall 2015
Full-time Students	94	127	121	59	71
Part-time Students	104	147	165	188	158
<b>Total Enrollment</b>	<b>198</b>	<b>274</b>	<b>286</b>	<b>247</b>	<b>229</b>

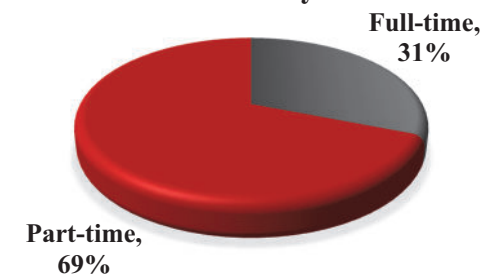
**Courses – University Center Ponca City**

	Fall 2011	Fall 2012	Fall 2013	Fall 2014	Fall 2015
Total Course Section Offerings	60	68	85	71	69
Total Credit Hours Generated	1,000	1,554	1,913	1,430	1,386

**Total Credit Hours Generated - University Center Ponca City**



**Student Enrollment Fall 2015 - University Center Ponca City**

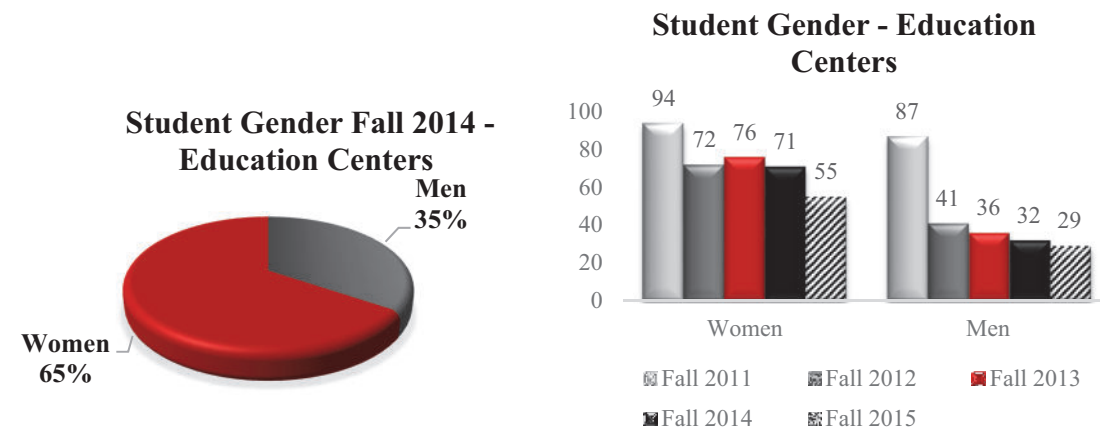


## Education Centers

Data collected from Student Information Systems for the fall semester of the year reported. Data includes only information for students physically located at Enid University Center or high school sites different from Tonkawa, Enid, Stillwater, and University Center Ponca City locations.

### Student Gender – Education Centers

	Fall 2011	Fall 2012	Fall 2013	Fall 2014	Fall 2015
Men Full-time	7	1	0	0	0
Men Part-time	80	40	36	32	29
<b>Total</b>	<b>87</b>	<b>41</b>	<b>36</b>	<b>32</b>	<b>29</b>
Women Full-time	1	0	2	0	0
Women Part-time	93	72	74	71	55
<b>Total</b>	<b>94</b>	<b>72</b>	<b>76</b>	<b>71</b>	<b>55</b>



### Student Age – Education Centers

	Fall 2011	Fall 2012	Fall 2013	Fall 2014	Fall 2015
<18	95	65	63	59	52
18-24	83	48	49	44	31
25-29	2	0	0	0	1
30-39	0	0	0	0	0
>40	1	0	0	0	0
<b>Total</b>	<b>181</b>	<b>113</b>	<b>112</b>	<b>103</b>	<b>84</b>

### Student Race/Ethnicity – Education Centers

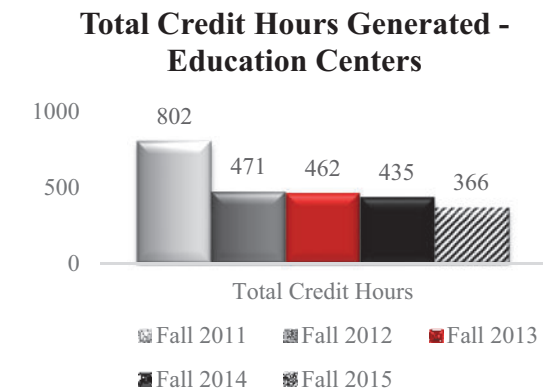
	Fall 2011	Fall 2012	Fall 2013	Fall 2014	Fall 2015
American Indian or Alaska Native	15	5	4	5	9
Asian	0	2	1	2	0
Black or African American	2	1	1	1	6
Native Hawaiian or other Pacific Islander	-	-	-	-	2
Hispanic/Latino	5	7	4	9	5
White	157	97	102	83	60
Unknown	2	1	0	3	0
Non-resident/Alien	0	0	0	1	0
2 or more	-	-	-	-	2

### Student Enrollment – Education Centers

	Fall 2011	Fall 2012	Fall 2013	Fall 2014	Fall 2015
Full-time Students	8	1	2	0	0
Part-time Students	173	112	110	103	84
<b>Total Enrollment</b>	<b>181</b>	<b>113</b>	<b>112</b>	<b>103</b>	<b>84</b>

### Courses – Education Centers

	Fall 2011	Fall 2012	Fall 2013	Fall 2014	Fall 2015
Total Course Section Offerings	64	25	24	21	17
Total Credit Hours Generated	802	471	462	435	366



### Enid University Center\*

	Fall 2011	Fall 2012	Fall 2013	Fall 2014	Fall 2015
Number of Students	56	60	62	60	43
Number of Seats	85	95	91	93	69
Total Credit Hours Generated	255	276	273	279	207

\*Enid University Center is part of the Enid Public School System

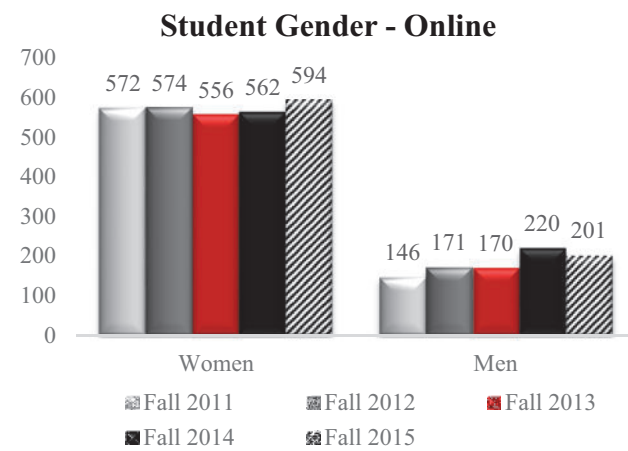
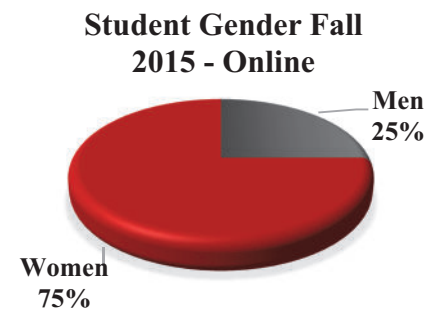


## Online

Data collected from Student Information Systems for the fall semester of the year reported. Data includes information on students taking online courses. Students may be taking classes other than online.

### Student Gender - Online

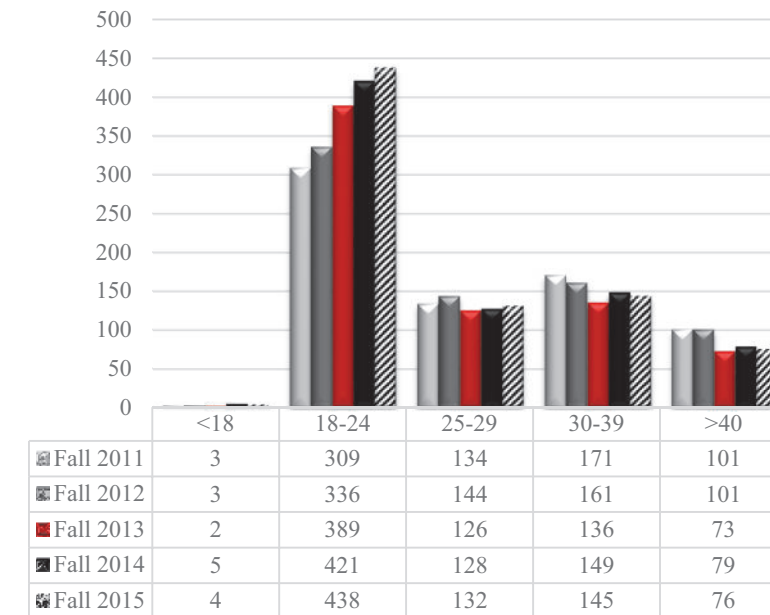
	Fall 2011	Fall 2012	Fall 2013	Fall 2014	Fall 2015
Men Full-time	79	89	109	72	104
Men Part-time	67	82	61	148	97
<b>Total</b>	<b>146</b>	<b>171</b>	<b>170</b>	<b>220</b>	<b>201</b>
Women Full-time	283	280	283	186	251
Women Part-time	289	294	273	376	343
<b>Total</b>	<b>572</b>	<b>574</b>	<b>556</b>	<b>562</b>	<b>594</b>



### Student Age - Online

	Fall 2011	Fall 2012	Fall 2013	Fall 2014	Fall 2015
<18	3	3	2	5	4
18-24	309	336	389	421	438
25-29	134	144	126	128	132
30-39	171	161	136	149	145
>40	101	101	73	79	76
<b>Total</b>	<b>718</b>	<b>745</b>	<b>726</b>	<b>782</b>	<b>795</b>

### Student Age Distribution - Online



### Student Race/Ethnicity - Online

	Fall 2011	Fall 2012	Fall 2013	Fall 2014	Fall 2015
American Indian or Alaska Native	81	79	68	90	110
Asian	5	8	5	5	2
Black or African American	19	30	25	24	31
Native Hawaiian or other Pacific Islander	-	-	-	-	2
Hispanic/Latino	39	34	34	44	61
White	570	591	594	608	583
Unknown	2	0	0	9	0
Non-resident/Alien	2	3	0	2	3
2 or more	-	-	-	-	3

### Student Enrollment - Online

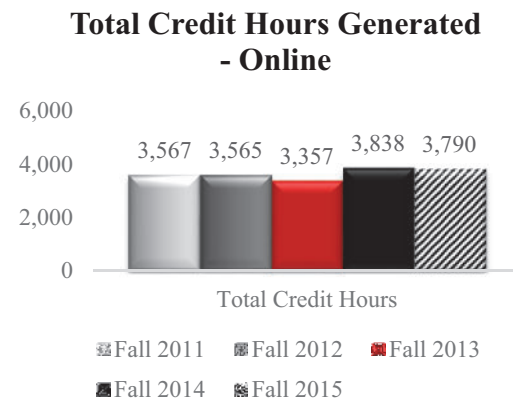
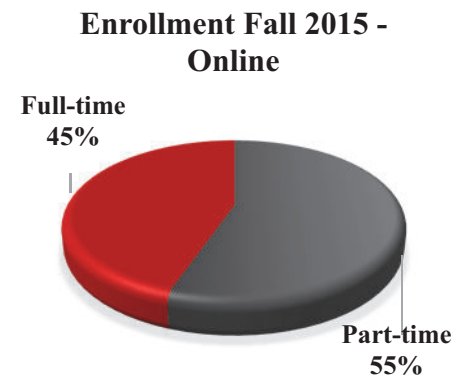
	Fall 2011	Fall 2012	Fall 2013	Fall 2014	Fall 2015
Full-time Students	362	369	392	258	355
Part-time Students	356	376	334	524	440
<b>Total Enrollment</b>	<b>718</b>	<b>745</b>	<b>726</b>	<b>782</b>	<b>795</b>



**Courses – Online\***

	Fall 2011	Fall 2012	Fall 2013	Fall 2014	Fall 2015
Total Course Section Offerings	53	52	50	55	57
Total Credit Hours Generated	3,567	3,565	3,357	3,838	3,790

\*Data for fall term only



**Accredited  
Programs**



**NORTHERN**  
Oklahoma College  
TOKAWA | ENID | STILLWATER

Life changing.

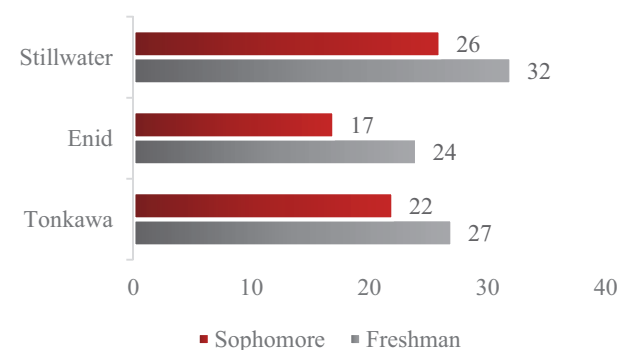


## Accredited Programs

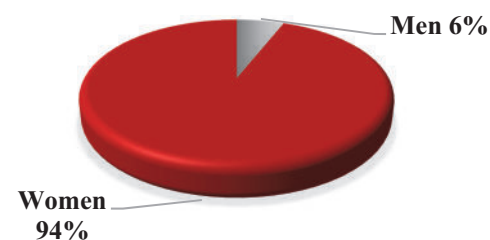
### Nursing Division

Accredited by the Accreditation Commission for Education and Nursing plus the Oklahoma Board of Nursing\*

**Nursing Student Count 2015**



**Gender Count 2015**



**Faculty/Staff 2015-2016**

	Full-time Faculty	Part-time Faculty	Full-time Staff	Part-time Staff
Tonkawa	4	0	1	0
Enid	4	0	0	1
Stillwater	4	1	0	1
<b>Total</b>	<b>12</b>	<b>1</b>	<b>1</b>	<b>2</b>

### Mission

With an understanding that all individuals have worth and potential, we are committed to student learning and success. Using personal interaction, rigorous instruction and innovative technologies, we strive to provide high quality, accessible nursing education that prepares a safe, competent nurse who is committed to compassion, critical thinking and lifelong learning.

### NOC Classroom Ratio/

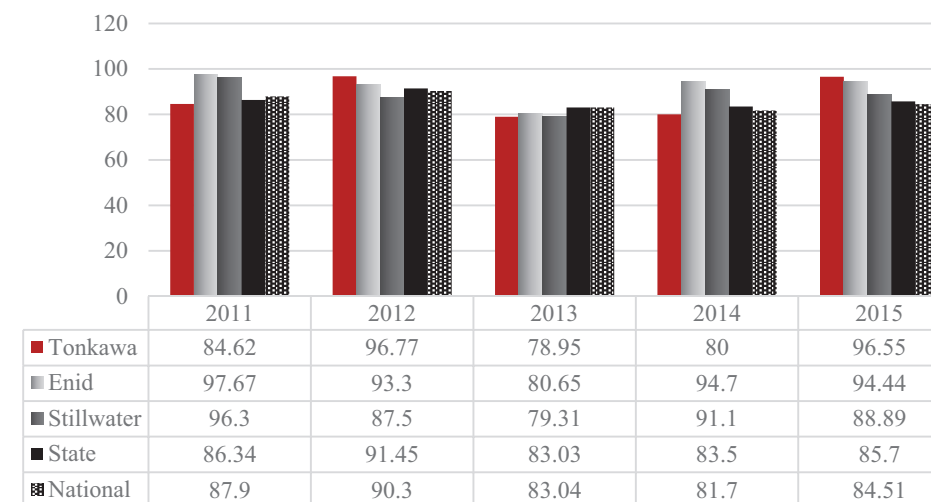
#### Student to Faculty

**14:1**

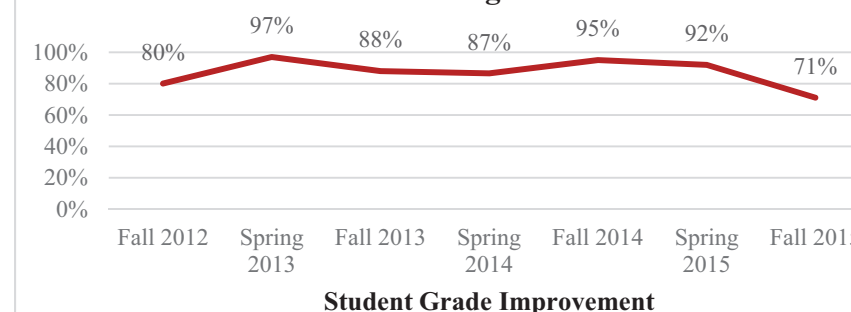
#### State Ratio

**20:1**

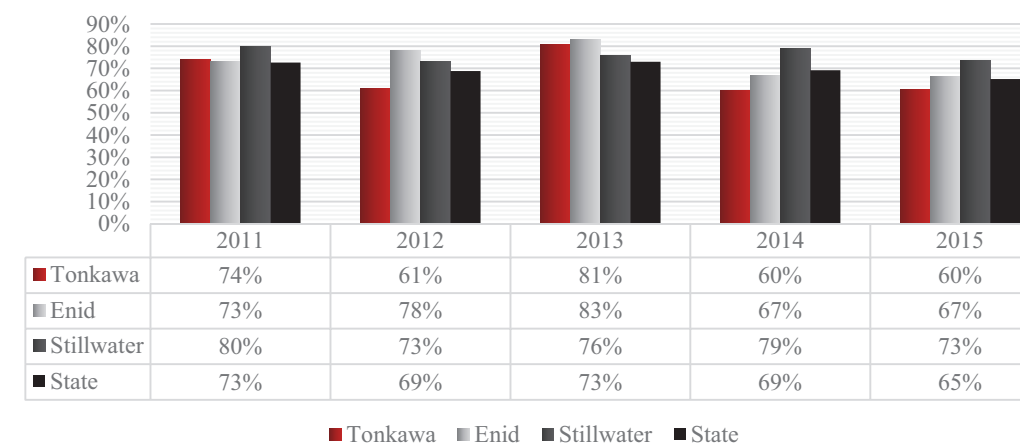
### Pass Rates on NCLEX



### Assessment and Counseling of At-Risk Students



### Completion/Graduation Rates



\*For more information on the Nursing program check the Nursing Fact Book on the Nursing website,  
<http://northok.publishpath.com/nursing-division1>

## Business Division

Accredited by the Accreditation Council for Business Schools and Programs

Data collected from Student Information Systems for the fall semester of the year reported. Data collected for the students declaring one of the majors offered in the Business Division. Students enrolled in a cooperative program were not included.

### Student Gender – Business

	Fall 2014	Fall 2015
Men Full-time	162	213
Men Part-time	99	82
<b>Total</b>	<b>261</b>	<b>295</b>
Women Full-time	95	120
Women Part-time	104	78
<b>Total</b>	<b>199</b>	<b>198</b>

### Student Age - Business

	Fall 2014	Fall 2015
<18	2	2
18-24	327	369
25-29	52	47
30-39	48	46
>40	31	29
<b>Total</b>	<b>460</b>	<b>493</b>

### Student Race/Ethnicity

	Fall 2014	Fall 2015
American Indian or Alaska Native	46	66
Asian	4	10
Black or African American	21	26
Native Hawaiian or other Pacific Islander	-	4
Hispanic/Latino	38	53
White	311	315
Unknown	18	0
Non-resident/Alien	22	16
Two races or more	-	3

## Majors - Business

	Fall 2014	Fall 2015
<b>Associates of Science Degrees</b>		
• Business Administration	347	370
• Business Adm-International Option	3	3
• Business Adm-MIS option	4	2
• Computer Science	46	57
• Enterprise Development	no coding	no coding
<b>Associates of Arts</b>		
• Enterprise Development	no coding	no coding
<b>Associates of Applied Science</b>		
• Business Management	59	50
• Business Mgmt-Accounting Option	0	6
• Business Mgmt-Entrepreneurship Option	1	5
<b>Total Majors</b>	<b>460</b>	<b>493</b>

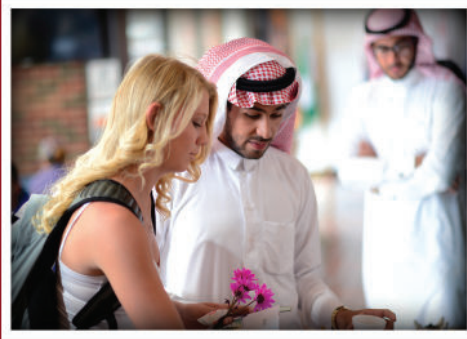
### Degrees Awarded – Business

	AY-2013	AY-2014	AY-2015
<b>Associates of Science Degrees</b>			
• Business Administration	135	114	96
• Business Adm-International Option	1	1	0
• Business Adm-MIS option	2	1	2
• Computer Science	3	6	13
• Enterprise Development	no coding	no coding	no coding
<b>Associates of Arts</b>			
• Enterprise Development	no coding	no coding	no coding
<b>Associates of Applied Science</b>			
• Business Management	5	5	6
• Business Mgmt-Accounting Option	0	2	0
• Business Mgmt-Entrepreneurship Option	0	0	1
<b>Total Degrees</b>	<b>146</b>	<b>129</b>	<b>118</b>

### Credit Hours Generated

	Fall 2013	Fall 2014	Fall 2015
Sections of Eight Week	8	2	4
Sections of Fewer than Eight Week	3	2	2
Sections of Online	13	13	15
Total Course Section Offerings	107	105	96
Total Credit Hours Generated	5,048	4,432	4,521





## Studies of Other Student Population

## Studies of Other Student Populations

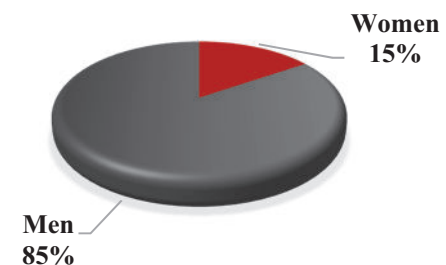
### International Students

Data collected from Student Information Systems for the fall semester of the year reported.

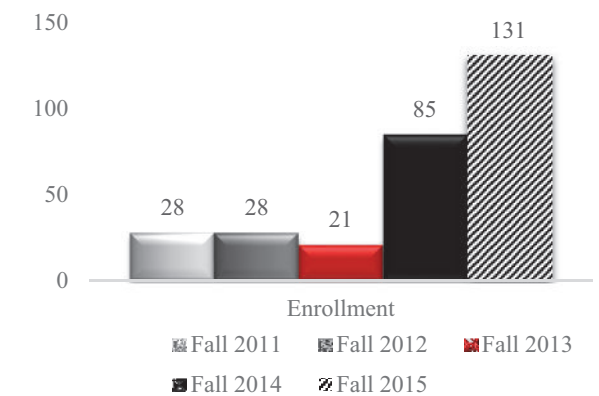
#### Student Gender – International Students

	Fall 2011	Fall 2012	Fall 2013	Fall 2014	Fall 2015
Men Full-time	16	16	16	50	111
Men Part-time	1	16	4	18	4
<b>Total</b>	<b>17</b>	<b>32</b>	<b>20</b>	<b>68</b>	<b>115</b>
Women Full-time	12	12	5	8	20
Women Part-time	4	2	4	9	1
<b>Total</b>	<b>16</b>	<b>14</b>	<b>9</b>	<b>17</b>	<b>21</b>

Student Gender Fall 2015 -  
International Students



Student Full-Time Enrollment -  
International Students



#### Student Age – International Students

	Fall 2011	Fall 2012	Fall 2013	Fall 2014	Fall 2015
<18	0	1	0	1	0
18-24	32	37	28	68	115
25-29	0	4	0	13	18
30-39	0	3	1	2	2
>40	1	1	0	1	1
<b>Total</b>	<b>33</b>	<b>46</b>	<b>29</b>	<b>85</b>	<b>136</b>

#### Student Enrollment – International Students

	Fall 2011	Fall 2012	Fall 2013	Fall 2014	Fall 2015
Full-time Students	28	28	21	58	131
Part-time Students	5	18	8	27	5
<b>Total Enrollment</b>	<b>33</b>	<b>46</b>	<b>29</b>	<b>88</b>	<b>136</b>



### Student Location – International Students\*

	Fall 2011	Fall 2012	Fall 2013	Fall 2014	Fall 2015
Tonkawa	29	18	14	17	16
Enid	6	3	4	4	9
Stillwater	11	25	11	65	111
<b>Total</b>	<b>33</b>	<b>46</b>	<b>29</b>	<b>86</b>	<b>136</b>

\*Students enrolled in coursework at multiple locations.

### Graduates – International Students

	AY-2011	AY-2012	AY-2013	AY-2014	AY-2015
Graduates	5	5	4	5	3

### Student Home Countries – International Students

	Fall 2011	Fall 2012	Fall 2013	Fall 2014	Fall 2015
Countries Represented	20	21	19	21	28

### Top Five Countries Represented at Northern Oklahoma College

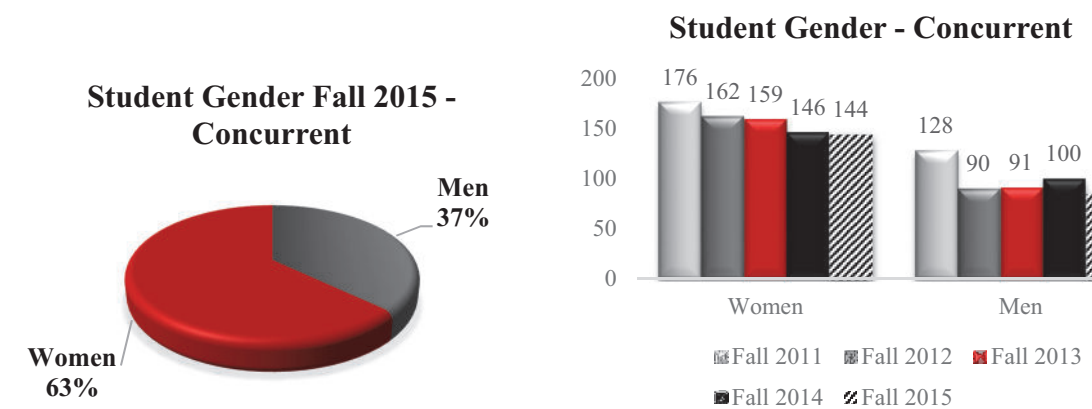
- Congo
- Kuwait
- Mexico
- Saudi Arabia
- Senegal

### Concurrent

Data collected from Student Information Systems for the fall semester of the year reported.

### Student Gender - Concurrent

	Fall 2011	Fall 2012	Fall 2013	Fall 2014	Fall 2015
Men	128	90	91	100	85
Women	176	162	159	146	144
<b>Total</b>	<b>304</b>	<b>252</b>	<b>250</b>	<b>246</b>	<b>229</b>



### Student Race/Ethnicity - Concurrent

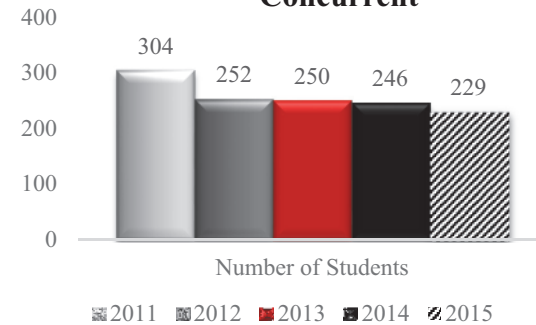
	Fall 2011	Fall 2012	Fall 2013	Fall 2014	Fall 2015
American Indian or Alaska Native	17	24	14	13	21
Asian	2	3	1	5	2
Black or African American	5	3	1	3	10
Native Hawaiian or other Pacific Islander	-	-	-	-	2
Hispanic/Latino	11	11	10	9	15
White	267	209	223	211	179
Unknown	2	2	1	4	0
Non-resident/Alien	0	0	0	1	0
Two races or more	-	-	-	-	0

### Student Enrollment - Concurrent

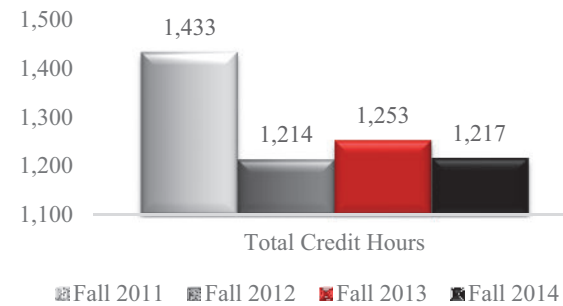
	Fall 2011	Fall 2012	Fall 2013	Fall 2014	Fall 2015
Number of Students	304	252	250	246	229
Number of Seats	473	403	415	405	374
Total Credit Hours Generated	1,433	1,214	1,253	1,217	1,129



**Student Enrollment Fall 2015-  
Concurrent**



**Total Credit Hours Generated -  
Concurrent**



### Courses - Concurrent

Top Enrolled Courses	Fall 2011	Fall 2012	Fall 2013	Fall 2014	Fall 2015
BISI 1114 – General Biology	7	13	8	18	3
CS 1113 – Computer Concepts	7	9	3	7	7
ENGL 1113 – English Composition I	158	123	145	133	125
HIST 1483 – American History Early	51	51	25	26	14
HIST 1493 – American History Late	25	21	23	11	26
MATH 1513 – College Algebra	92	77	65	70	85
POLI 1113 – Am Natl Government	62	33	64	53	51
PSYC 1113 – General Psychology	27	15	32	20	19
SOCI 1113 – Principles of Sociology	5	7	8	6	3
SPCH 1713 – Oral Communication	7	12	12	10	11

### Location - Concurrent

	Fall 2014		Fall 2015	
Tonkawa	62	26%	72	31%
Enid	43	18%	37	16%
Stillwater	27	11%	19	8%
UC	30	13%	20	9%
Ed Centers	76	32%	83	36%

## Enid Athletes



### Enid GPA - Athletes

	AY-2014	AY-2015
Enid Athletic Department	3.03	3.20
Women's Basketball	3.04	3.53
Men's Basketball	2.79	2.96
Softball	3.07	3.24
Baseball	3.20	3.13

### Enid Cohort Graduation Rates at 150% - Athletes

	Cohort-2012 Grad Yr-2014	Cohort-2013 Grad Yr-2015
Enid Athletic Department	48%	47%
Women's Basketball	58%	83%
Men's Basketball	14%	40%
Softball*	-	40%
Baseball	52%	39%

\*Team was not established in 2012 cohort year

### Enid Athletic Department Records

	AY-2014 Wins-Losses	AY-2015 Wins-Losses- Ties
Women's Basketball	23-6	27-7
Men's Basketball	19-10	19-11
Softball	32-26	37-19-1
Baseball	35-25	43-16

## Tonkawa Athletes

### Tonkawa GPA - Athletes



	AY-2014	AY-2015
Tonkawa Athletic Department	<b>3.07</b>	<b>3.09</b>
Women's Soccer	3.02	3.22
Men's Soccer	2.90	3.15
Women's Basketball	3.33	2.85
Men's Basketball	3.07	3.24
Softball	3.19	3.25
Baseball	2.98	2.94

### Tonkawa Cohort Graduation Rates at 150% - Athletes

	Cohort-2012 Grad Yr-2014	Cohort-2013 Grad Yr-2015
Tonkawa Athletic Department	<b>29%</b>	<b>41%</b>
Women's Soccer	21%	31%
Men's Soccer	29%	54%
Women's Basketball	27%	100%
Men's Basketball	38%	20%
Softball	38%	42%
Baseball	26%	11%

### Tonkawa Athletic Department Records

	AY-2014 Wins-Losses	AY-2015 Wins-Losses-Ties
Women's Soccer	12-11*	17-2-1
Men's Soccer	17-3-1	7-11-2
Women's Basketball	18-14	11-21
Men's Basketball	19-12	26-7
Softball	23-35	29-28
Baseball	37-24	43-19

\*Team forfeited 8 games due to administrative error.

### Special Recognition- Athletes

#### NOC Enid Jets Women's Basketball:

- Ranked in the top 15 nationally by the NJCAA
- Recognized by the NJCAA for Academic Excellence with a team GPA of 3.53
- NJCAA Region II Tournament Runner-Up
- Oklahoma College Athletic Conference Runner-Up
- 2015-2016 NJCAA National Tournament Qualifier (4<sup>th</sup> National Tournament Appearance)
- Riley Torrey set a new NJCAA national record for most consecutive free throws made with 54
- Riley Torrey was named NJCAA Honorable Mention All-American

#### NOC Enid Jets Men's Basketball:

- Casey Cole and Zachary Rayner received the NJCAA Exemplary Award for Academic Excellence

#### NOC Enid Jets Softball:

- Recognized by the NJCAA for Academic Excellence with a team GPA of 3.23
- Payton Calhoun received the NJCAA Exemplary Award for Academic Excellence
- Jamie Lowrie received the NJCAA Superior Award for Academic Excellence

#### NOC Enid Jets Baseball:

- Ranked 2<sup>nd</sup> nationally by the NJCAA
- Tied the school record for most wins in a season (43)
- Recognized by the NJCAA for Academic Excellence with a team GPA of 3.16
- Blake Biggs, Garrett Price and Will Sprayberry received the NJCAA Exemplary Award for Academic Excellence

#### NOC Tonkawa Mavericks Women's Soccer:

- Ranked in the top 15 nationally by the NJCAA
- Oklahoma College Athletic Conference Champions
- NJCAA Region II Tournament Champions
- Recognized by the NJCAA for Academic Excellence with a team GPA of 3.21
- Coach Joshua Smith was named Region II Coach of the Year
- Alexis Gipson and BreAnn Tolleson named NJCAA 3<sup>rd</sup> Team All-Americans
- Sarah Blakley received the NJCAA Exemplary Award for Academic Excellence

#### NOC Tonkawa Mavericks Men's Soccer:

- Recognized by the NJCAA for Academic Excellence with a team GPA of 3.14
- Victor Hernandez received the NJCAA Exemplary Award for Academic Excellence

#### NOC Tonkawa Mavericks Women's Basketball:

- Alena Chernova and Darian Hill received the NJCAA Exemplary Award for Academic Excellence

#### NOC Tonkawa Mavericks Men's Basketball:

- Ranked in the top 20 nationally by the NJCAA
- Oklahoma College Athletic Conference Runner-Up



- Recognized by the NJCAA for Academic Excellence with a team GPA of 3.23
- Coach Donnie Jackson was named Region II Coach of the Year
- Costa Anderson was named NJCAA Honorable Mention All-American

NOC Tonkawa Mavericks Softball:

- Recognized by the NJCAA for Academic Excellence with a team GPA of 3.14
- Tori Smith received the NJCAA Superior Award for Academic Excellence

NOC Tonkawa Baseball:

- Ranked 5<sup>th</sup> nationally by the NJCAA
- Set the school record for most wins in a season (43)
- Oklahoma College Athletic Conference Runner-Up
- NJCAA Region II Tournament Runner-Up
- Josh Evans set a new NJCAA record for most RBI in a season (113)
- Josh Evans was named NJCAA 1<sup>st</sup> Team All-American
- Ariel Burgos-Garcia was named NJCAA 3<sup>rd</sup> Team All-American
- Ariel Burgos Garcia was selected in the MLB Draft by San Diego in the 32<sup>nd</sup> round out of NOC Tonkawa.
- Walker Whitworth was selected in the MLB Draft by Cincinnati in the 35<sup>th</sup> round out of NOC Tonkawa.
- Larkin Wisdom received the NJCAA Exemplary Award for Academic Excellence
- Chad Dunlop received the NJCAA Superior Award for Academic Excellence
- Walker Whitworth received the NJCAA Pinnacle Award for Academic Excellence



## Year-End Highlights



**NORTHERN**  
Oklahoma College  
TONKAWA | ENID | STILLWATER

Life changing.



## Year-End Highlights 2015-2016

### Memberships/Affiliations

- Vice President for NOC Stillwater, Shannon Cunningham, served on the Council of Extended Campus Administrators. In addition, she was a committee member for the National FFA Horse Career Development Event (CDE) and a member of Leadership Stillwater, Class XXIV.
- Vice President for Enrollment Management, Rick Edgington, led planning activities for the 2016 Southern Association of College Registrars and Admissions Officers (SACRAO) Annual Conference as Local Arrangements Chair. In addition, he served as a peer reviewer for the Higher Learning Commission focusing on federal compliance. Dr. Edgington is a member of the OSRHE taskforce on Reverse Transfer, as part of Gov. Fallin's Complete College America initiative. He also serves on the board of Alpha 2, a local treatment center for drug and alcohol addiction.
- President, Cheryl Evans, chaired the Oklahoma State Regents for Higher Education Council of Presidents, a 25-member group of College and University Presidents, as well as serving as past chair for the OACC Presidents. She has served as a member of the Ponca City and Tonkawa Chambers of Commerce, the Lion's Club, Tonkawa Development Authority and Incubator Board, Joint Industrial Foundation (Garfield County Economic Development Organization), Community Development Support Association, and Oklahoma Historical Society. In addition, she serves on the Board of Trustees for the Ponca City University Center and Oklahoma Foundation for Excellence. In 2015, Dr. Evans was also appointed by Governor Fallin to serve on the Governor's Education Advisory Committee. In 2015, she was honored by the Enid News & Eagle as Pillar of the Plains. 2016, Dr. Evans was Honorary Commander for Vance Air Force Base in Enid, OK.
- Vice President for Student Affairs, Jason Johnson, served as a board member for the Kay County Board of Health and President of the Alpha 2 Board of Directors.
- Vice President for Financial Affairs, Anita Simpson, was a member of the Council of Business Officers and Chair of the Alliance Health Blackwell Hospital Board of Trustees. Other memberships included the Southern Association of College and University Business Officers—Small Colleges Committee and the Oklahoma and National Associations of College and University Business Officers. She also serves as treasurer for the NOC Foundation and Enid Higher Education Council.
- Vice President for Development and Community Relations, Sheri Snyder, served as State Director for Oklahoma on the CASE District IV Board and as NOC's representative on the OSRHE Economic Development Council. In addition, she served as a board member for the Northwest Oklahoma Workforce Investment Board, a State Advisory Board Member for the Oklahoma Small Business Development Council, and a member of both the Ponca City and Tonkawa Chambers of Commerce.
- Vice President for Academic Affairs, Pam Stinson, served on the OSRHE Council of Instruction for Chief Academic Officers. She also served as a member of the Tonkawa Chamber's Education Committee and a Character Counts coach, as well as a member of St. Mary's School Advisory Council. In addition, she served as a peer reviewer, team chair, and institutional liaison for the Higher Learning Commission.
- Vice President for NOC Enid, Ed Vineyard, served as board member on the Associate Degree Commission for the Accreditation Council for Business Schools and Programs (ACBSP). In addition, he served as board member and newsletter editor for the Salvation Army of Enid.

### Institutional Updates

- Over 100 guests attended the grand opening and ribbon cutting events for the Jets and Mavericks Residence Halls on October 9. Lunch was held in the newly renovated Jets Café. Both events concluded with the Masonic Cornerstone and Time Capsule Ceremony.
- New corequisite models were created in the Math and Language Arts Divisions to be introduced for fall 2016.
- Two rounds of filming 360° campus virtual tours were completed for the NOC website.
- Northern hosted the following groups for their leadership tours on our campuses: Leadership Stillwater, Leadership Blackwell, Leadership Ponca City, Leadership Newkirk, Leadership Tonkawa and Leadership Enid.
- Approximately 500 guests/performers attended the annual Gala concert on April 24 in the Kinzer Performing Arts Center. Maestro Gerald Steichen conducted the Gala, featuring Laquita Mitchell, Glenn Seven, and NOC music faculty Dineo Heilmann, Shannon Bradford, Edward Dixon, Chad Anderson, Brandon Haynes and the Gala Orchestra.
- The Office of Student Affairs hosted a total of 115 student activities, 13 volunteer activities, and 7 leadership activities in 2015-2016. Some of the activities offered were bubble soccer, a hypnotist act, the Spring Fling, NOC Olympics, and Bingo for Food, as well as volleyball, bowling, kickball, dodge ball, basketball, and softball intramurals.
- A group of 21 from NOC attended Higher Education Day at the Capitol on February 16.
- Eight Oklahoma Promise Students and six administrators attended Oklahoma's Promise Day at the State Capitol on April 14. Students and administrators showed appreciation for the Legislature's ongoing support of the Oklahoma's Promise scholarship program and encouraged legislators to continue to preserve the program's funding source.
- NOC has been working with Oklahoma ABLE Tech Accessibility Coordinator updating our website to break down accessibility barriers.
- Two Northern alumni were inducted into the Northern Oklahoma College's Distinguished Alumni Hall of Fame at this year's Alumni and Friends Reunion held on Saturday, April 9 in the Renfro Center. The 2016 inductees were M. Scott Carter, Class of 1983, and Dr. Gordon Laird, Class of 1962.
- Over 400 participants were in attendance at our Carl and Carolyn Renfro Fall Lectureship with **Dr. Joshua Landis, Director of Middle East Studies at the University of Oklahoma, presenting a talk entitled "ISIS, Ethnic Cleansing, and the Great Sorting Out in the Middle East"** on November 12.
- Over 350 guests attended the spring 2016 Renfro Lectureship with guest speaker Dr. Elliot Engel, professor and author. The dinner event, entitled "How William Became Shakespeare," was on March 24.
- The Alumni and Community Relations Office hosted/participated in 10 employee, alumni, and graduation events, and 16 economic development/legislative events. In addition, the Marketing Department participated in 10 advertising events.
- The Development Office processed 55 fundraisers totaling \$208,778.
- The Foundation awarded \$219,333.72 in scholarships to 243 recipients from Tonkawa, Enid, and Stillwater campuses plus \$25,429.23 in loans to 95 Tonkawa and Enid students.
- Northern celebrated the retirements of following employees with a luncheon in their honor:
  - Mrs. Linda Fiscus, Fine Arts Instructor, retiring after 15 years of service
  - Mrs. Jackie Johnson, Math Instructor, retiring after 20 years of service
  - Dr. Gerald Konkler, Criminal Justice Instructor, retiring after 6 years of service
  - John Michael Warburton, Fine Arts Instructor, retiring after 20 years of service



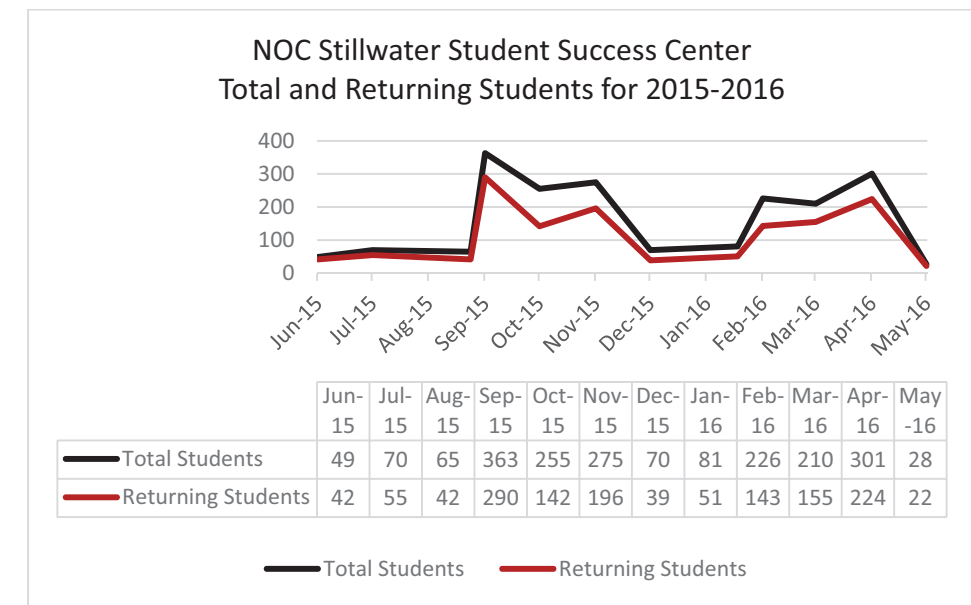
### Advisory Boards, Internships, and Job Shadowing

- Agriculture—5 board members attended on February 4, 2016
- Business—3 board members attended on December 4, 2015
- Criminal Justice—6 board members attended the inaugural meeting on March 30, 2016
- Mass Communications—5 board members attended the inaugural meeting on November 5, 2015
- Nursing—12 board members attended the meeting on March 25, 2016
- Process Technology—3 board members attended the meeting on November 5, 2015
- Blake Hoeman, Criminal Justice student, interned with Tonkawa Police Department.
- Hannah Forman, Mass Communications student, interned with NOC High School and College Relations.
- Christy Hooley, Mass Communications student, interned with Vype magazine.
- Kylie Ott, Agriculture student, interned in summer 2016 with Tonkawa Chamber of Commerce.
- Sam Alvarado, Nicole Politis, and Brittany Dennis interned with GEAR UP at Camp NOCLIP during summer 2016.
- Carson Combest, Criminal Justice student, worked for the Army Corps of Engineers as a summer ranger for Kaw Lake.
- Four NOC students assisted Bart Cardwell in performing embryo transfers on 15 donors and approximately 70 recipient ewes. Tad Thompson from Indiana was the practicing vet for this procedure.
- Katie Davis and Brittany McBrain, Pre-vet students, job shadowed Kurt Campbell and assisted with artificial insemination, semen evaluation, and freeze branding at Blubaugh Angus Ranches.
- Cody Asche joined Regent Tom Dugger's accounting firm in Stillwater and will be working while attending Oklahoma State University.

### Tutoring

- Through tutor.com, the following numbers of students were served: August 2015-36, September-113, October-54, November-101, December-22, January 2016-55, February-141, March-138, April-304

On-Site Tutoring Usage April, 2016						
	Total Visits	Accounting	Computer Concepts	Language Arts	Math	Science
Enid	186	In department		1	185	-
Stillwater	301	53	41	79	103	25
Tonkawa	85	In department		67	12	6



### Performances, Presentations, and Publications

- Chad Anderson, Director of Musical Theatre, performed in his 11<sup>th</sup> OKC Philharmonic Christmas Show as a member of the Pops Chorale.
- Paul Bowers had poetry published in the Summer 2015 and Fall 2015 issues of *Poetry Quarterly*. Paul Bowers also attended and read poetry at Scissortail Writers Festival at East Central University, and he has poems coming out in *Red Earth Review* this summer.
- Scott Harmon was a regular presenter at Tonkawa Public Schools to increase interest in STEM. Every Friday during the spring semester, Mr. Harmon was joined by two NOC students as guest speakers.
- Jena Kodesh and Audrey Schmitz were guest speakers for a Feb 10 Brown Bag event at the Cherokee Strip Regional Heritage Center in Enid. Each spoke about the agrarian philosophies behind the traveling exhibit titled *Rooted In* featuring painting by Kodesh, ceramics by Schmitz and photography by Ken Crowder. *Rooted In* was on exhibit at the Cherokee Strip Regional Heritage Center Jan 12 – Feb 12.
- Lisa McGaw gave AP chemistry teacher education presentations at Rice University in Houston, AP chemistry workshops in Alaska, and mentored teachers in Arkansas.
- Audrey Schmitz was one of the panelists for a moderated discussion that followed the Feb 27 premiere of *Called to Walls* at Liberty Hall in Lawrence, KS. Part movie, part documentary, *Called to Walls* features the community mural made in Tonkawa in 2010. Schmitz was the mural project coordinator for the three-month venture granted to the city by Mid America Art Alliance.
- Stephanie Scott's work has been published as a peer-edited and reviewed chapter of a book. The book's title is *Learning Across Borders: Perspectives on International and Transnational Higher Education*. Stephanie's chapter is titled "Teaching Multicultural Composition through the Graphic Novel." <http://www.cambrindgescholars.com/learning-across-borders>.
- Pam Stinson co-presented at the OK Women in Higher Education Conference, Nov. 20, 2015.
- Frankie Wood-Black and Pam Stinson each had proposals approved to present at NISOD in May 2016.
- Frankie Wood-Black was quoted in *U.S. News and World Report* regarding emergency planning.

- Gene Young published a manuscript in the peer-reviewed Kansas Ornithological Society Bulletin: Penner, R. L., B. A. Andrews, J. E. Lyons, and E. A. Young. 2015. Spring Surveys (2011-2014) for American Golden-Plovers (*Pluvialis dominica*), Upland Sandpipers (*Bartramia longicauda*), and Buff-breasted Sandpipers (*Calidris subruficollis*) in the Flint Hills. Kansas Ornith. Soc. Bull. 66(4):37-52. This manuscript acknowledged NOC students that helped collect data during the study. Gene also published research articles with NOC students Dylan Mulligan and Owen Simpson—Young, E.A., M.C. Thompson, C. Otte, D. Mulligan, and O. Simpson. 2016. The Winter Bird Count for 2015-2016. Kansas Ornithological Society Bulletin 67(1):1-19, 21-28.

### Competitions and Conferences Hosted at Northern Oklahoma College

- Maverick Sheep show was held on August 22 and had 110 entries.
- 17<sup>th</sup> Annual NOC Fall Steer and Heifer Shows was held on November 7 with 120 head of cattle competing.
- NOC Livestock Judging Contest was held on January 18 with 209 students competing. Additional contests were hosted on January 27 with 77 students competing in Ag Communication, 45 in Agronomy, 116 in Ag Mechanics, 41 in Dairy Science, 23 in Entomology, 41 in Farm Business Management, 79 in Food Science and Technology, 20 in Horticulture, 70 in Meat Science and 66 in Veterinary Science. A total of 787 students competed in events over the two days. Workers for the contest were Kurt Campbell, Bart Cardwell, Scott Harmon, Austin Kindschi, Cathy Moore, Tricia Moore, Gene Young, and members of the NOC Livestock Judging Team and the Northern Aggies club.
- The Academic Interscholastic Contest was held on April 6 with approximately 500 participants. Laura Marshall hosted and was assisted with numerous faculty members reading and scoring the contests, as well as the President's Leadership Council assisting in facilitation.
- Paul Bowers, Brandon Hobson, and Don Stinson hosted the Chikaskia Literature Festival on the Tonkawa campus September 24-25 with writers from Oklahoma reading to students and faculty.
- Paul Bowers, Scott Haywood, Brandon Hobson, and Don Stinson assisted with the scheduling and planning of the Cherokee High School debate tournament in February.
- On Feb. 25, the Music Department hosted the District 4 choral concert music contest. Over 15 choirs were on campus participating. On Feb. 27, the Music Department hosted the District 4 Solo and Ensemble music contest. Over 1000 students were on campus throughout the day participating in the event.

### New Degree Programs/Options

- An HPER Personal Trainer option and four personal training courses were approved by the NOC Board of Regents and awaiting approval by the OSHRE.
- Two new co-requisite classes were developed for math and one for English.
- A new two-hour nursing boot camp was approved by the Curriculum Committee and will be piloted at NOC Stillwater in August.

### Special Recognitions

- Lynn Brown, Stillwater math faculty; Linda Fiscus, Tonkawa Fine Arts faculty; and Mark Silkey, Social Science division chair and faculty were selected as NISOD Excellence in Education Award winners for 2016. Honorees will be recognized at the May 2016 annual NISOD conference in Austin, TX.
- Pam Baggett (Division of Health, Physical Education, and Recreation, Enid), Coleen Blevins (Division of Agriculture, Science, and Engineering, Tonkawa), Emily Hladik (Division of Social Science, Enid), Sandra Jensen (Division of Mathematics, Enid), and Doris Osborn (Division of

Language Arts, Tonkawa) were all selected as the 2016 recipients for Excellence in Education Awards for adjunct faculty.

- President Evans received the “Pillar of the Plains” Award from the Enid News and Eagle.
- DeLisa Ging became a charter member of the Quality Matters’ Instructional Designer Association.
- Dineo Heilmann, Fine Arts Division Chair, received the Tonkawa Chamber of Commerce Citizen of the Year Award.
- Marjilea Smiheisler, NOC staff emeritus, received the Tonkawa Chamber of Commerce Lifetime Service Award.
- Gene V. Dougherty, NOC faculty emeritus, received the Tonkawa Chamber of Commerce Tonkawa Price Award
- Cara Beth Johnson was elected President of the Tonkawa Public School Board in March 2016.
- Kristi Orr won “Best College Instructor” for the Enid News and Eagle “Enid’s Best” publication.
- Audrey Schmitz was selected as 1 of 11 artists from 6 states to create new work for an exhibit titled *Ballad of the Farm: Then, Now, Tomorrow* for the Bone Creek Museum of Agrarian Art in David City, Nebraska.
- Frankie Wood-Black, Director of Process Technology, was awarded the 2016 Oklahoma Chemist of the Year Award. In August, 2015, Dr. Wood-Black was selected as an American Chemical Society (ACS) Fellow and presented with full honors at the ACS meeting in Boston, MA.
- Wade Watkins was 1 of 12 faculty from around the US to be placed on the EF College Study Tours Presidential Council.
- Faculty emeritus Gene Dougherty received the prestigious Governor’s Art Award. Fine Arts faculty contributed to the nomination material along with the Tonkawa Arts and Humanities Council.
- Dr. Joe Kinzer, NOC President Emeritus, was inducted into the OACC Hall of Fame.

### Student Special Recognitions

- Andrea Balay, NOC Enid student, was selected for Newman Civic Award and \$500 scholarship.
- Tony Williams, NOC Enid math student, was selected for the NASA Community College Aerospace Scholars Program.
- Andrea Balay, Chelsi Mootz, and Brianna Singleton, NOC Enid students, were all selected to participate in a program at Johnson Space Center. They will travel with math instructor Kristi Orr June 20-24 for a MUREP Educator Institute. In addition to the in-house sessions, they will each be completing 16 hours of online instruction (8 prior and 8 post).
- Two NOC Students, Victor Hernandez (Tonkawa) and Alexis Hill (Enid) were awarded the national Andrew V. Stevenson Scholarships in the amount of \$1,000. The scholarships are awarded through Kappa Beta Delta Business Honor Society. 12 national scholarships were awarded this year. Northern has consistently had a scholarship recipient for the past 5 years.
- Five NOC students received the OACC All American Team Recognition—Andrea Balay from the Enid campus, Cole Burchett and Glena Osban from the Stillwater campus, and Cody Asche and Carly Woodring from the Tonkawa campus. Additionally, Tara Lucas from the Tonkawa campus received the OACC Tuition Waiver.

### Community Service and Service Learning

- Brandon Hobson, Dean Percy, and Don Stinson, along with Lit Club members, assisted with the Radio Club’s “Because We Care” car show.
- Tammy Davis and NOC students completed their third year of service-learning in conjunction with Lincoln Academy in Stillwater. Tammy also had three students enrolled in Service Learning class, and the students have completed work in their chosen environments: two local elementary schools



and a real estate agent. Another student volunteered to operate a booth at the Payne County Youth Services Aging Out Youth Conference.

- DeLisa Ging coordinated the annual Campus Compact's Voter Registration Drive with the help of Scott Haywood on the Tonkawa campus and Diana Watkins on the Stillwater campus with a collected record number of 241 voter registrations submitted.
- Cara Beth Johnson and Rae Ann Kruse began three-year terms as Tonkawa Chamber of Commerce board members.
- Cathy Moore worked as an editor for End of Instruction exams for English through the State Department of Education.
- Under the direction of Fritz Osell, the NOC Astronomy Center in Enid hosted 200 visitors to view the lunar eclipse on September 27.
- DMI students co-sponsored the Diabetes Walk for Awareness in October.
- Pam Stinson presented weekly lessons in a 25-week program to Tonkawa 8<sup>th</sup> graders for Character Counts.
- Five NOC nursing students traveled to Nicaragua in July 2015 for a service-learning trip.
- SNA students were actively involved in a number of community projects, including adopting families for Christmas donations, a chili cook-off to benefit United Way, and hosting an OBI blood drive. Nursing students also conducted handwashing clinics at area schools and conducted blood pressure and blood sugar tests for Octoberfest in Ponca City.
- Students enrolled in physical and biological science courses on the Enid campus donated nearly 300 toys to the Marine Toys for Tots drive and OU Children's Hospital during the Division's Bedlam Toy drive that concluded December 1, 2015.
- Scott Harmon and Frankie Wood-Black conducted science demonstrations at area public schools to promote STEM awareness. Scott has been working with Tonkawa elementary school and Frankie was at Deer Creek/Lamont High School.
- Tonkawa Chemistry instructor, Lisa McGaw mentored High School AP Chemistry teachers in Houston, Dallas, Enid, Ardmore, OKC, Arkansas and Pennsylvania by holding online help sessions. She has also conducted in-person student prep sessions in Houston, TX, and Ada, OK.
- AMBUC's and Kappa Beta Delta were busy throughout the year participating in various community service events including hosting the Canned Food Drive, giving away an Am-Tryke, placing flags throughout Enid for Veteran's Day, hosting speakers and many more.
- Audrey Schmitz visited Tonkawa Elementary teachers on Jan. 25 and shared ideas about "Heart Mapping," an art project that inspires writing and story-making. Subsequently, approximately 400 heart-works were made by TES (and some THS) students. Heart in the Park committee members assisted by NOC art student Elizabeth Cerre installed the hearts on the south fence of Centennial Park for the month of February.
- Audrey Schmitz and Jena Kodesh also helped organize the Tonkawa Arts and Humanities second annual Council Chair-ity Event, raising money for art scholarships and art supplies for Tonkawa High School.

### Professional Development

- Six Professional Development sessions were offered on all three campus along with fieldtrips to *the Gilcrease Museum and the National Weather Center*.
- Six Professional Development webinars were highlighted and archived on the PD link this year.
- Thirteen in-service sessions on Blackboard and ITV Best Practices were offered.
- Barbara Coloroso, educator and author, spoke to faculty about helping students make ethical decisions.

- "The Instructional Resources and Professional Development" tab on myNOC has grown with particular growth this academic year in the QM Quadrant, NISOD Nook, Instructional Best Practices, and ADA Accessibility sections.
- A monthly email newsletter was created to showcase upcoming professional development offerings.
- Veronica Fuxa, NOC student and author, and Marion Lazan, Holocaust Survivor and internationally known author, graced Northern's stage at the *Remembering the Holocaust Day* events.

### Agriculture, Science, and Engineering

- Bart Cardwell and the Sheep Production and Management class exhibited 22 head of the NOC sheep flock at the Tulsa State Fair. It was the best placing day at the TSF since we have been attending. NOC came home with 20 first place ribbons in various divisions and also won Champion Suffolk and Dorset Rams and the Reserve Champion Hampshire Ewe Lamb. NOC was also the Premier Exhibitor in the Suffolk and Hampshire Breeds.
- The NOC Livestock Judging Team, led by Coach Austin Kindschi, judged at the Flint Hills Classic in Manhattan, KS, AKSARBEN Stock Show and Rodeo in Omaha, NE, the Mid-America Classic in Wichita, KS, and the Tulsa State Fair. Sophomore team member was Jared Fast, Newkirk, OK, and freshmen team members were Devin Fisher, Wilder, ID; Cheyenne Gaff, Jet, OK; Hannah Hardin, Cleveland, OK; Caroline Hughes, Washington Courthouse, OH; Kacy Kincaid, Blackwell, OK; Ethan Norman, Davenport, OK; Caleb Penwell, Washington Courthouse, OH; Ryan Rector, Olive, OK; and Brandon Stallings, Jones, OK. Top 10 results included the following: AKSARBEN: Hannah Hardin, 1<sup>st</sup> in Sheep & Goats, Brandon Stallings, 4<sup>th</sup> in Sheep & Goats and 8<sup>th</sup> High Individual Overall, Kacy Kincaid, 9<sup>th</sup> in Cattle, NOC, 4<sup>th</sup> in Sheep & Goats, 5<sup>th</sup> in Cattle, and 5<sup>th</sup> High Team Overall; Mid-America Classic: Caleb Penwell, 1<sup>st</sup> in Swine, NOC 4<sup>th</sup> High Team in Swine; and TSF: Kacy Kincaid, 1<sup>st</sup> in Cattle, NOC High Team in Swine, 10<sup>th</sup> in Reasons.
- Larry and Christy Shell of Shell Club Lambs in Glencoe, OK, were recognized at the Regents Business Partnership Excellence Award Luncheon held on March 8<sup>th</sup>, at UCO. Shell Club Lambs have donated a total of 5 rams, totaling more than \$16,000, to the NOC Sheep Center breeding program.
- NOC students enrolled in astronomy courses began projects utilizing the new telescope camera and their individual personal cell phone cameras.
- All but one spring graduate in the PTEC program have successfully found job opportunities in their field of study.
- Frankie Wood-Black has been working with P66 to secure an annual donation. NOC recently received a check for \$15,000 from the P66 group; plans are to use funds to add a simulation module to the laboratory.
- The Joyce Haywood Memorial Scholarship was established for a woman in Process Technology.
- 44 applications were reviewed for the PTEC program for the 2016-2017 school year. The reviewers included members from Phillips 66 and NOC faculty. 24 applicants and 8 alternates were selected.
- Pre-Engineering students worked on three design projects during the spring semester: a truss, a paper bridge, and cardboard chairs.

### Business

- Kappa Beta Delta hosted two student seminars on campus. The first was on November 18th called "Saving and Spending 101: What College Students Need to Know about Loans and Budgeting" and the second was on March 30<sup>th</sup> called "How to Dress for Success and Resume Writing," which was led by Katherine Long of the Ponca City Development Authority.
- The Business Division launched a Business Student Advisory Board. Students provided input on the current programs and offerings, services, facilities and overall opinion of the Business Division to help with the continuous improvement efforts of the Division.

- The Business Division submitted the bi-annual ACBSP Report, which was accepted and approved by the Board of Commissioners in April 2016.
- Business faculty participated in several professional development activities including the Accounting Educator’s Conference, webinars on Microsoft Office 2016, Who Wants to be an Entrepreneur workshop, and ADA compliance in Online classes, as well as two faculty completing additional graduate coursework.
- Todd Ging and Cara Beth Johnson served on 3 visits as Site Evaluation Team Chairs for ACBSP.
- Jill Harmon, Cara Beth Johnson, and Danny Stewart, as well as two students (Sreyla Heng and Karlee Arnold) attended the ACBSP Region 6 conference in Ada, OK, October 21-23rd. During the normal conference proceedings, a concurrent student conference was held. Funds for the students to attend were provided by the Masonic Fraternity of Oklahoma Endowment Grant. Both Sreyla and Karlee represented Northern well, placing 1st and 2nd in the Investment Simulation competition.

### **Fine Arts**

- Musical Theatre performances included “A Year with Frog and Toad” and “The Addams Family”; both received great receptions from audiences. The fall play was “Vanya and Sonia and Masha and Spike.”
- Madrigals performed at the Kansas City Renaissance Festival along with the Harold Trumpets on Oct. 10.
- Eddie Dixon had his doctoral research proposal accepted.
- DMI students were able to begin working with a new 3D printer and have been working on modeling a realistic sports car using blueprints from auto companies.
- NOC Music Department had their first recruitment display at the state OMEA Conference. Over 50 high school All State musicians attended the booth.

### **Health, Physical Education, and Recreation**

- 67 students in Tonkawa and 54 students in Enid are CPR certified because of the First Aid class.
- Men's basketball had a 3.4 GPA fall 2015
- 4 of 5 men's Tonkawa basketball sophomores are graduating with HPE&R degree (5th sophomore is graduating with a different degree) and 4 of 5 sophomores are going on to play NCAA division I ball and the 5th is playing at the next level.

### **Language Arts**

- Dean Percy and Scott Haywood with the Mass Communication students (4) attended OETA/OBEA Student day and participated in discussions regarding the challenges of responsibly covering news and other events. Dean Percy organized a “touch-a-truck” segment where students were able to tour different remote broadcasting vehicles, including storm chase vehicles and the News9 helicopter.
- Composition boot camps were once again successful in saving students a semester of remediation with one week refreshers. Tonkawa’s boot camp, taught by Stacey Frazier and Cathy Moore, had 64 enrolled in the class. 43 students passed the COMPASS of the 59 who tested. Enid’s boot camp, taught by Starla Reed, had 29 enrolled and 18 passed the COMPASS.
- Language Arts faculty attended the Oklahoma Association for Developmental Education on October 29-20 to learn of new co-requisite models for remediation. Cathy Moore will be the co-chair for the national conference in March, 2017.

### **Math**

- Cassie Firth is serving on the Math Pathways Task Force and is part of the Math Success Group.

- Christi Hook and Cassie Firth attended the Course Equivalency Project to develop Course Learning Outcomes for College Algebra and Business Calculus.
- Barbara Stadler attended the American Association of University Professors in OKC.
- Cassie Firth will be serving as a Co-Chair for the Co-req task force with the state.
- Kristi Orr started a student chapter of the national organization Association of Women in Math.
- The Math Division developed plans to implement College Algebra and Math Applications co-req courses for the first time in Fall 2016. They also attended the OADE Conference in October to learn of new co-req models.
- Enid faculty were able to relocate all to the same building, moving into new offices and opening the new math tutor center in Zollars.
- Math Division welcomed a new full-time instructor in Tonkawa in the fall – Lynn DeMuth.
- Christi Hook completed her master’s degree in Education with Math Emphasis (MAE) from Chadron State College in December.

### **Nursing**

- The annual Nurses Career Day was held on Jan. 28. Six hospitals, seven universities, one career technology center, and three home health care agencies participated. All sophomore students were present; freshman nursing students and anyone interested in health careers were invited to attend.
- Thirteen nursing students attended an intensive three-day domestic disaster relief field training exercise in Maryville, MO. Students had the opportunity to gain hands-on experience at a 320-acre training area that utilizes a disaster simulation village and rope courses to support deployment for field hospitals, fire trucks, ambulances and air ambulance helicopters.

### **Social Science**

- On Feb. 22 members of the Criminal Justice Club-Tonkawa and the Criminal Justice Club-Enid went to the Oklahoma State Bureau of Investigation Forensic Science Center in Edmond to tour the facility. Club members spent an hour and a half being shown the different sections of the lab by OSBI personnel. The services offered by the Forensic Science Center include Controlled Substance Identification, Firearms and Toolmarks, Forensic Biology, Latent Evidence, Toxicology/ Alcoholic Content and Trace Evidence. This outing illustrated the practical application of things the students have learned in class and it is hoped that this will become an annual event.



## Institutional Dictionary

To offer additions, corrections, or suggestions on definitions, please submit changes in writing to the Vice-President of Academic Affairs.

<b>Administrative Council</b>	The Administrative Council serves as an advisory group to the President. Composed of the Vice President for Academic Affairs, Vice President for Financial Affairs, Vice President for Development and Community Relations, Vice President for Student Affairs, Vice President for Enrollment Management, Vice President for Enid, Vice President for Stillwater, Associate Vice President for Physical Operations, Director of Information Technology, Dean of Academic Services, Dean of Students (Tonkawa), Dean of Students (Enid), Athletic Director, Director of Development and Donor Relations, Diversity Officer and Coordinator of International Students, the Council's primary function is to provide open discussion of institutional matters on which the President seeks advice and counsel. On most matters, a consensus rather than a formal action may be sought.
<b>ACT</b>	IPEDS definition: ACT, previously known as the American College Testing program, measures educational development and readiness to pursue college-level coursework in English, mathematics, natural science, and social studies. Student performance does not reflect innate ability and is influenced by a student's educational preparedness.
<b>Academic Program</b>	IPEDS definition: An instructional program leading toward an associate, bachelor, master, doctoral, or first-professional degree or resulting in credits that can be applied to one of these degrees.
<b>Academic Year (AY)</b>	The period from May of one calendar year to May of the following year during which students attend an educational institution. It includes a summer, fall, and spring term or semester.
<b>Accrediting Agencies</b>	IPEDS definition: Organizations (or bodies) that establish operating standards for educational or professional institutions and programs, determine the extent to which the standards are met, and publicly announce their findings.
<b>Accreditation</b>	A process whereby a professional association or nongovernmental agency grants recognition to an educational institution for demonstrated ability to meet predetermined criteria for established standards.
<b>Alumni</b>	A graduate or former student of a college.
<b>Associate Degree</b>	An award that normally requires at least 2 but fewer than 4 years of full-time equivalent college work.
Associate in Arts	A two-year degree preparing students for transfer to a four-year institution with a foundational education in liberal arts.
Associate in Science	A two-year degree preparing students for transfer to a four-year institution with a foundation in science, engineering and mathematics.
Associate in Applied Science	A two-year degree designed for students who intend on entering the workforce immediately following graduation.

## Board of Regents

The Northern Oklahoma College Board of Regents has a cooperative relationship with the State Regents for Higher Education. The State Regents act as a coordinating board for members of the state system in such areas as program approval and fund allocations. The Northern Oklahoma College Board is empowered with statutory authority for governance of its own institution.

## Catalog

The Catalog offers information about the academic programs and support services of the College. Website: <http://northok.publishpath.com/catalog2>

## CIP Code

Classification of Instructional Program Code organized by the National Center for Education Statistics. A six-digit code in the form xx.xxxx that identifies instructional program specialties within educational institutions.

## Cohort

A specific group of students established for tracking purposes.

## Credit Hours

IPEDS definition: A unit of measure representing the equivalent of an hour (50 minutes) of instruction per week over the entire term. It is applied toward the total number of credit hours needed for completing the requirements of a degree, diploma, certificate, or other formal award.

## Default Rates

The rate at which debt holders default on the amount of money that they owe.

### Cohort Default Period

The phrase "cohort default period" refers to the three-year period that begins on October 1 of the fiscal year when the borrower enters repayment and ends on September 30 of the second fiscal year following the fiscal year in which the borrower entered repayment. Students who enter repayment in 2009 and default in 2009, 2010, or 2011 are reported in 2012.

## Degree

IPEDS definition: An award conferred by a college, university, or other postsecondary education institution as official recognition for the successful completion of a program of studies.

## Degree Award Date

The date at which a student finishes the coursework necessary to obtain a degree and the educational institution awards the degree.

## Developmental Courses

Courses offered to aid students in obtaining the educational information needed to proceed into a college level course.

## Distance Learning

The use of technology to offer course instruction to students not necessarily present with the instructor.

**Traditional:** A class is considered "traditional" when instruction relies solely upon face-to-face instruction with 800 minutes of seat time per credit hour issued.

**Web-enhanced:** A web-enhanced class is one in which a Learning Management System (e.g. Blackboard) is used for posting notes and/or homework assignments as a supplement to traditional class meetings.

**Hybrid:** A hybrid class represents a mixture of traditional and online elements with a minimum of 65% face-to-face instructional time and the use of a Learning Management System (e.g. Blackboard) as a supplement for either synchronous or asynchronous learning with the expectation of student interaction with other students and the teacher.

**Online:** An online class is one in which 75% or more of the instruction occurs through the use of a Learning Management System such as Blackboard.

**ITV:** Interactive television courses—delivery might be traditional, web-enhanced, or hybrid.

**Employees**

Full-time Staff	Persons employed for non-instructional duties for 40 hours a week.
Part-time Staff	Persons employed for non-instructional duties for fewer than 30 hours a week.
Full-time Faculty	Persons employed for instruction of students that teach 15 or more credit hours of course work a semester.
Adjunct	Persons employed for instruction of students that teach between 1-10 credit hours of course work a semester.

**Enrollment**

Full-time	Students enrolled in 12 or more credit hours for the semester.
Part-time	Students enrolled in 1-11 credit hours for the semester.
Sophomore	Students with 31-60 credit hours of course work completed.
Freshman	Students with 0-30 credit hours of course work completed.

**Executive Council**

The Executive Council serves as an advisory group to the President. Composed of the Vice President for Academic Affairs, Vice President for Financial Affairs, Vice President for Development and Community Relations, Vice President for Student Affairs, Vice President for Enrollment Management, Vice President for Enid, and Vice President for Stillwater, The Council’s primary function is to provide open discussion of institutional matters on which the President seeks advice and counsel. On most matters, a consensus rather than a formal action may be sought.

**Fall Cohort**

IPEDS: The group of students entering in the fall term established for tracking purposes. For the Graduation Rates component, this includes all students who enter an institution as full-time, first-time degree or certificate-seeking undergraduate students during the fall term of a given year.

**High School Diploma or Recognized Equivalent**

IPEDS: A document certifying the successful completion of a prescribed secondary school program of studies, or the attainment of satisfactory scores on the GED or another state specified examination.

**Financial Aid**

IPEDS: Federal Work Study, grants, loans to students (government and/or private), assistantships, scholarships, fellowships, tuition waivers, tuition discounts, employer aid (tuition reimbursement) and other monies (other than from relatives/friends) provided to students to meet expenses. This excludes loans to parents. Website: [www.studentaid.gov](http://www.studentaid.gov)

Federal Grants	IPEDS: Transfers of money or property from the Federal government to the education institution without a requirement to receive anything in return. These grants may take the form of grants to the institutions to undertake research or they may be in the form of student financial aid. (Used for reporting on the Finance component)
Pell	(Higher Education Act of 1965, Title IV, Part A, Subpart I, as amended.) Provides grant assistance to eligible undergraduate postsecondary students with demonstrated financial need to help meet education expenses. Website: <a href="http://www.studentaid.gov">www.studentaid.gov</a>
Pell Eligible	Students eligible for Pell assistance.
Loans	Any monies that must be repaid to the lending institution for which the student is the designated borrower. Includes all Title IV subsidized and unsubsidized loans and all institutionally- and privately-sponsored loans. Does not include PLUS and other loans made directly to parents. Website: <a href="http://www.studentaid.gov">www.studentaid.gov</a>

**Financial Year (FY)**

A 12-month period over which a company budgets its spending. The fiscal year is referred to by the date at which it ends. Northern Oklahoma College begins its fiscal year on July 1 and concludes on June 30 in line with the State Regents’ and the State of Oklahoma’s fiscal year.

**Foundation**

An institutionally related 501 (c)(3) foundation created to enhance the educational opportunities and environment of the institution. The principal function of the Northern Oklahoma College Foundation is to promote Northern Oklahoma College and the welfare of its programs and students by providing scholarships, loans and other awards as deemed appropriate.

**Foundation Grants**

Financial support from any external agency which is handled through the Northern Oklahoma College Foundation.

**Gender**

The sex of the individual.

**GPA**

Grade point average of a student is a calculation based off of a student’s credit hours taken and grades received for those credit hours.

**Graduation Rate**

IPEDS: The rate required for disclosure and/or reporting purposes under Student Right-to-Know Act. This rate is calculated as the total number of completers within 150% of normal time divided by the revised adjusted cohort.

**Grants**

Non-repayable funds or products (an award) disbursed to a grantee (recipient).



<b>Headcount</b>	The total number of individuals enrolled in the educational institution or program.
<b>High School GPA</b>	A student's weighted or unweighted GPA from his/her high school transcript.
<b>High School Tank</b>	A student’s placement in high school compared to peers in the same grade based on GPA.
<b>Higher Learning Commission</b>	The Higher Learning Commission (HLC) is an independent corporation that was founded in 1895 as one of six regional institutional accreditors in the United States. HLC accredits degree-granting post-secondary educational institutions in the North Central region.
<b>Institution of Higher Education</b>	A term formerly used in IPEDS and HEGIS to define an institution that was accredited at the college level by an agency or association recognized by the Secretary, U.S. Department of Education. These schools offered at least a one-year program of study creditable toward a degree and they were eligible for participation in Title IV Federal financial aid programs.
<b>IPEDs</b>	The Integrated Postsecondary Education Data System. A system used by the U.S. Department's National Center for Educational Statistics (NCES) that annually gathers information from educational institutions of higher education and vocational institutions that participate in federal student financial aid programs.
<b>Major</b>	A field of study that a student chooses to receive a degree in.
<b>Race/Ethnicity</b>	IPEDS definition: Categories developed in 1997 by the Office of Management and Budget (OMB) that are used to describe groups to which individuals belong, identify with, or belong in the eyes of the community. The categories do not denote scientific definitions of anthropological origins. The designations are used to categorize U.S. citizens, resident aliens, and other eligible non-citizens.
American Indian or Alaska Native	IPEDS definition: A person having origins in any of the original peoples of North and South America (including Central America) who maintains cultural identification through tribal affiliation or community attachment.
Asian	IPEDS definition: A person having origins in any of the original peoples of the Far East, Southeast Asia, or the Indian Subcontinent, including, for example, Cambodia, China, India, Japan, Korea, Malaysia, Pakistan, the Philippine Islands, Thailand, and Vietnam.
Black or African American	IPEDS definition: A person having origins in any of the black racial groups of Africa.
Hispanic/Latino	A person of Cuban, Mexican, Puerto Rican, South or Central American, or other Spanish culture or origin, regardless of race.
Native Hawaiian or Other Pacific Islander	A person having origins in any of the original peoples of Hawaii, Guam, Samoa, or other Pacific Islands.
White	A person having origins in any of the original peoples of Europe, the Middle East, or North Africa.

Race and Ethnicity Unknown	The category used to report students or employees whose race and ethnicity are not known.
Non-resident/Alien	A person who is not a citizen or national of the United States and who is in this country on a visa or temporary basis and does not have the right to remain indefinitely.
<b>Residence</b>	Location at which a student is living.
<b>Retention</b>	IPEDS definition: A measure of the rate at which students persist in their educational program at an institution, expressed as a percentage. For four-year institutions, this is the percentage of first-time bachelor's (or equivalent) degree-seeking undergraduates from the previous fall who are again enrolled in the current fall. For all other institutions this is the percentage of first-time degree/certificate-seeking students from the previous fall who either re-enrolled or successfully completed their program by the current fall.
<b>SIS</b>	Student Information System - a data warehouse that contains all the data related to the institution.
<b>State Grants</b>	A financial award given by the state government to a grantee (recipient residing in the corresponding U.S. state).
<b>Strategic Plan</b>	A systematic process of envisioning a desired future and translating this vision into broadly defined goals or strategies and a sequence of steps to achieve them.
<b>Student</b>	
Concurrent	Students enrolled in high school and taking college coursework at the same time.
First-time Full-time students	Students enrolled in 15 or more credit hours of course work for the first time at any educational institution.
First-time Student	IPEDS: A student who has no prior postsecondary experience (except as noted below) attending any institution for the first time at the undergraduate level. This includes students enrolled in academic or occupational programs. It also includes students enrolled in the fall term who attended college for the first time in the prior summer term and students who entered with advanced standing (college credits earned before graduation from high school).
Full-time Student	Students enrolled in 12 or more credit hours a semester.
Part-time Students	Students enrolled in between 1-11 credit hours a semester.
<b>Student Handbook</b>	Handbook containing policies and procedures for students at Northern Oklahoma College. Website: <a href="http://northok.publishpath.com/student-handbook">http://northok.publishpath.com/student-handbook</a>

<b>Time to Degree</b>	Time a student takes to finish a degree. For a two-year institution 100% of time to degree would be two years. For 150% time to degree, time to degree would be three years.
<b>Title IV Aid</b>	IPEDS: Title IV aid to students includes grant aid, work study aid, and loan aid. These include Federal Pell Grant, Federal Supplemental Educational Opportunity Grant (FSEOG), Academic Competitiveness Grant (ACG), National Science and Mathematics Access to Retain Talent Grant (National SMART Grant), Teacher Education Assistance for College and Higher Education (TEACH) Grant, Federal Work-Study, Federal Perkins Loan, Subsidized Direct or FFEL Stafford Loan, and Unsubsidized Direct or FFEL Stafford Loan.
<b>Title IV Institution</b>	IPEDS: An institution that has a written agreement with the Secretary of Education that allows the institution to participate in any of the Title IV federal student financial assistance programs (other than the State Student Incentive Grant [SSIG] and the National Early Intervention Scholarship and Partnership [NEISP] programs).
<b>Transcript</b>	An official record of student performance showing all schoolwork completed at a given school and the final mark or other evaluation received in each portion of the instruction. Transcripts often include an explanation of the marking scale used by the school.
<b>Transfer of Credit</b>	IPEDS: The policies and procedures used to determine the extent to which educational experiences or courses undertaken by a student while attending another institution may be counted for credit at the current institution.
<b>Transfer-out Rate</b>	Total number of students who are known to have transferred out of the reporting institution within 150% of normal time to completion divided by the adjusted cohort.
<b>Tuition</b>	The amount of money charged to students for instructional services. Tuition may be charged per term, per course, or per credit (NOC charges per credit hour).
<b>In-state Tuition</b>	The tuition charged by institutions to those students who meet the state's or institution's residency requirements.
<b>Out-of-state Tuition</b>	The tuition charged by institutions to those students who do not meet the institution's or state's residency requirements.
<b>Two-year Institution</b>	IPEDS: A postsecondary institution that offers programs of at least 2 but fewer than 4 years duration. Includes occupational and vocational schools with programs of at least 1800 hours and academic institutions with programs of fewer than 4 years. Does not include bachelor's degree-granting institutions where the baccalaureate program can be completed in 3 years.
<b>Unduplicated Headcount</b>	IPEDS: The sum of students enrolled for credit with each student counted only once during the reporting period, regardless of when the student enrolled.

## Additional Resources

American Fact Finder – U.S. Census Bureau	<a href="http://factfinder2.census.gov">http://factfinder2.census.gov</a>
Aspen	<a href="http://www.aspeninstitute.org/policy-work/college-excellence">http://www.aspeninstitute.org/policy-work/college-excellence</a>
Enid Regional Development Alliance	<a href="http://www.growenid.com">www.growenid.com</a>
Federal Statistics	<a href="http://fedstats.sites.usa.gov/">http://fedstats.sites.usa.gov/</a>
Federal Student Aid – Default Management	<a href="http://ifap.ed.gov/DefaultManagement/finalcdrg.html">http://ifap.ed.gov/DefaultManagement/finalcdrg.html</a>
Higher Learning Commission	<a href="http://www.ncahlc.org">www.ncahlc.org</a>
National Agricultural Statistics Service	<a href="http://www.nass.usda.gov">www.nass.usda.gov</a>
National Center for Educational Statistics	<a href="http://nces.ed.gov/ipeds/datacenter/">http://nces.ed.gov/ipeds/datacenter/</a>
NOC Business Division Website	<a href="http://www.noc.edu/business-division1">http://www.noc.edu/business-division1</a>
NOC Nursing Division Website	<a href="http://northok.publishpath.com/nursing-division1">http://northok.publishpath.com/nursing-division1</a>
NOC Website	<a href="http://www.noc.edu">www.noc.edu</a>
Oklahoma Department of Commerce	<a href="http://okcommerce.gov">http://okcommerce.gov</a>
Oklahoma Employment Security Commission	<a href="http://www.ok.gov">www.ok.gov</a>
Oklahoma State Regents for Higher Education	<a href="http://www.okhighered.org">www.okhighered.org</a>
Ponca City Website	<a href="http://goponca.com">http://goponca.com</a>
SmartAssets	<a href="https://smartasset.com/student-loans/the-top-ten-community-colleges-in-the-country">https://smartasset.com/student-loans/the-top-ten-community-colleges-in-the-country</a>
Southern Regional Education Board	<a href="http://www.sreb.org">www.sreb.org</a>
University Center Ponca City	<a href="http://ucponcacity.com">http://ucponcacity.com</a>



