



NORTHERN
Oklahoma College
TONKAWA | ENID | STILLWATER

2016-2017 **FactBook**



Introduction

The Northern Oklahoma College Fact Book is a collection of institutional data put together to provide information to those who make decisions, write grants, need institutional data for accreditation purposes, and to the general public interested in the institution. The Fact Book is intended to be a snapshot of the collective institution, including data from all three of Northern's locations with data and information updated in July of the year reported. The Fact Book, now in its fifth year, is an annual publication that is intended to grow into a longitudinal study of the institution which gives the reader a history of Northern in previous years.

The data presented in the Fact Book was obtained either from certified data sources, such as IPEDs, or from campus databases. All years, unless otherwise indicated, follow the IPED reporting schedule of summer, fall, and spring for that academic year. Thus any year containing data for AY – 2016 includes summer 2016, fall of 2016 and spring of 2017. If the data is collected from a source other than those previously indicated, the source will be reported with the data. Realizing there may be gaps in information, it is requested that Fact Book readers provide feedback so that the future publications may include that information. If any questions arise, please contact the Office of Institutional Research.

Prepared by
Kathleen Otto
Director of Institutional Research and Assessment
July 2017

This publication was issued by Northern Oklahoma College President's Office. 25 copies were prepared and printed in July 2017 at a cost of \$144.80.

This institution in compliance with Title VI of the Civil Rights Act of 1964, Executive Order 11246 as amended, Title IX of the Education Amendments of 1972 and other Federal laws and regulations, does not discriminate on the basis of race, color, national origin, sex, age, religion, handicap or status as a veteran in any of its policies, practices or procedures. This includes, but is not limited to, admission, employment, financial aid and educational services.

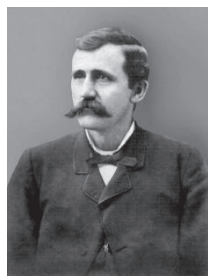
Table of Contents

About NOC	History	4
	Mission, Vision, Core Values	6
	Strategic Plan	6
	Honors and Awards	7
	Board of Regents	8
	Letter from the President	9
	Organizational Chart	10
	Administrative Council	10
	Grants	13
	Advisory Board Members	15
	Community Support/Partnerships	
	· Academic Partners	17
	· Articulation Agreements	17
	· Career Technology Partners	17
	· Sponsored Programs	17
	· Foundation Board Members	18
Academics	Contact Information	20
	· State Map	21
	· Tonkawa Map	22
	· Enid Map	23
	· Stillwater Map	24
	Programs of Study	
	· Associate in Arts	25
	· Associate in Science	25
	· Associate in Applied Science	25
	Accreditations	26
	Honor Societies	26
	High-Impact Strategies	26
Students	Student Profiles	
	· Gender	28
	· Age	28
	· Race/Ethnicity	29
	· Residence	31
	· Housing	32
	Enrollment	
	· Student Enrollment	33
	· Enrollment in Developmental Courses	33
	· Enrollment in Distance Education	33
	Courses	34
	Graduation/Completion	
	· Degrees Awarded/Retention	34
	· Graduation Rates	34
	· Reverse Transfer	34

	Tuition & Fees	36
	Room & Board	39
	Library Services	40
	Financial Aid	
	· Profiles	41
	· Grant Aid	41
	· Loans	42
	· Aid by Income	42
	· Default Rates	42
Faculty/Staff	Profiles	44
	Faculty Demographics	44
	· Full-time Faculty	44
	· Full-time Staff	45
	· Part-time Faculty	45
	· Part-time Staff	45
Finances	Core Revenues	47
	Core Expenses	48
	Assets	49
Campus Safety	Criminal Offenses	51
	Disciplinary Actions	52
	Hate Crimes	52
	Arrests	53
	Fire Statistics	53
NOC Location Information	Tonkawa	56
	Enid	59
	Stillwater	62
	University Center Ponca City	67
	Education Centers	70
	Online	72
Accredited Programs	Nursing	76
	Business	78
Studies of Other Student Populations		
	International Students	81
	Concurrent Students	83
	Enid Athletes	85
	Tonkawa Athletes	86
Year-End Highlights		90
Data Dictionary		98
Additional Resources		106

About NOC

History of NOC



Through the efforts of the Honorable James H. Wilkin, on March 1, 1901, the Oklahoma Territorial Legislature passed an act appropriating money to establish University Preparatory School at Tonkawa. Wilkin also obtained an endowment of land for the school. Consequently, Central Hall was constructed, a faculty employed, and other essentials of an educational institution provided. In September 1902, the doors of the new school swung open to prospective students. Two hundred and twenty-seven young men and women enrolled; thus opened the colorful history of one of Oklahoma's most important and picturesque educational institutions.

As the curriculum expanded and the enrollment increased, new equipment and other facilities became necessary. An act of Congress dated June 2, 1906, provided for the donation to the school of a section of land adjoining the city of Tonkawa. Proceeds from the sale of this land were to be used to provide additional buildings. A similar act of 1909 granted another tract of land for the same purpose. Harold Hall and Foster-Piper Fieldhouse were erected and paid for with the funds secured from the sale of these lands.

The college department was established in 1921, and the institution became a fully-accredited junior college. By an act of legislature in 1941, the name was changed to Northern Oklahoma Junior College. Further changes were made by the state legislature in 1965 with the passage of the Higher Education Code. This new statement of law changed the institution's official name to Northern Oklahoma College. Its three-man Board of Regents was expanded to five and given added authority and freedom in conducting institutional affairs.

In June 1999, Northern purchased the grounds and buildings of the Phillips University campus in Enid. Phillips University, a private institution established in 1907 by the Disciples of Christ, had closed its doors in August 1998. The purchase of the campus allowed Northern to expand its services to its Enid students and to provide for growth of its academic, student and community programs.

In 2001, Northern Oklahoma College celebrated the centennial anniversary of its founding, and, with the beginning of the fall 2002 semester, entered its second hundred years of providing quality education to students. The history of the institution is unique in the annals of higher education.

In August 2003, Northern joined in a partnership with Oklahoma State University to expand educational opportunities for college bound students in Oklahoma. The partnership allowed Northern to expand its services to its Stillwater students.



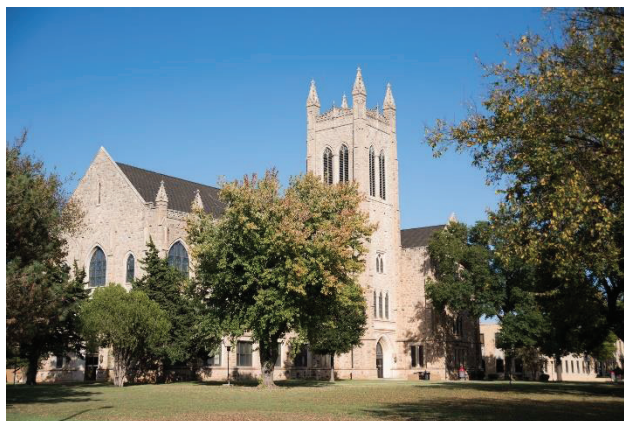


Tonkawa

The Tonkawa campus, established in 1901, serves as the administrative center for Northern. All program oversight in academic, financial, student service, personnel, development, physical plant, and information technology is housed in Tonkawa. Over 1,500 students attend class on site, by ITV, or via online. Offering over 20 distinct degree paths with over 40 degree options and an array of courses, Northern distinguishes itself as a leading community college in Oklahoma.

Enid

The Enid site was established in 1999 in conjunction with the Oklahoma State Regents for Higher Education (OSRHE) and the City of Enid. This site has grown in offering multiple two-year liberal arts degree programs to some 800 students each semester. The Enid site continues to expand its faculty, curriculum, and numerous clubs and activities.



Stillwater

The Stillwater site, established in 2003, serves multiple missions to area students. Primarily a Gateway Program, the Stillwater site serves students who would otherwise not be admitted to Oklahoma State University. The site, however, also admits students seeking general education courses that transfer to other comprehensive colleges and universities. Northern Stillwater admits approximately 300 new students each fall and spring semester, serving some 1,700 students. March 2017, ground was broken for a New Classroom Building estimated to be completed in July 2018.



Mission Statement:

Northern Oklahoma College, the State's oldest community college, is a multi-campus, land-grant institution that provides high quality, accessible, and affordable educational opportunities and services which create life-changing experiences and develop students as effective learners and leaders within their communities in a connected, ever-changing world.

Vision Statement:

Northern Oklahoma College will be recognized as a model institution and leader in academic quality and cultural enrichment, promoting student success, collaborative learning, creative and forward thinking, and community responsiveness.

Core Values:

Personalized Education:

We believe in providing individualized services that lead our students to achieving their academic goals in a welcoming and safe environment.

We believe in providing support to students in and out of the classroom so that they receive a full college experience with diverse opportunities.

Community and Civic Engagement:

We believe that educated citizens are necessary for a healthy, democratic society, and that free and open expression and an appreciation for diversity are cornerstones of higher education.

We believe in economic and environmental sustainability and the importance of enriching the intellectual, artistic, economic, and social resources of our communities.

Continuous Improvement:

We believe in the inherent value of intellectual pursuit for both personal and professional growth, as well as in the need to prepare students for 21st century professions.

We believe that a knowledge-centered institution is vital to a knowledge-based economy, and we measure our success against national models and standards of excellence.

2013-2018 Strategic Plan

Goal 1A: Enhance the quality of life for students.

Goal 1B: Enhance recruitment efforts as well as retention and graduation rates.

Goal 2: Cultivate and maintain partnerships to inform and improve academic decisions, enrich student experiences, and support regional needs.

Goal 3: Upgrade facilities for quality and efficiency to enhance the student experience.

Goal 4: Enhance professional development opportunities and quality working conditions for NOC employees.

Goal 5: Diversify and increase revenue streams

Link to Strategic Plan - <http://www.noc.edu/strategic-plan>

Honors/Awards

WalletHub ranks Northern Oklahoma College No. 16 of 821 community colleges

WalletHub, the personal finance website, has released its rankings of 2016's Best & Worst Community Colleges.

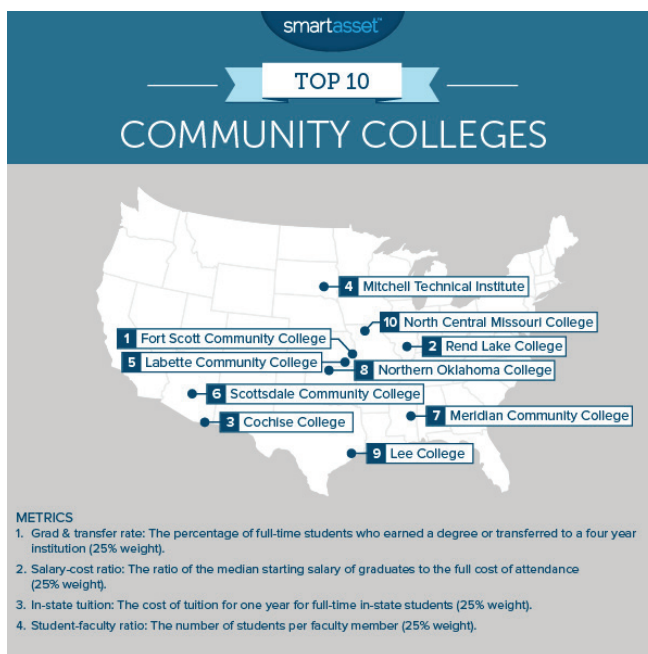
WalletHub's analysts compared 821 community colleges to identify those that outshine their competition. In making such a comparison they examined each school across 12 key metrics, ranging from the cost of in-state tuition and fees to student-faculty ratio to graduation rate. Northern Oklahoma College ranked Number 16 in their "2016 Best & Worst Community Colleges" ranking report.

For WalletHub's state-by-state analysis, they calculated a weighted average of the scores obtained by the community colleges in each state and the number of students enrolled in each school. They also took into account only the states that had at least two community colleges present in their sample of the Best & Worst Community Colleges in order to ensure comparability of results.

In the story accompanying the rankings, WalletHub wrote, "But while community colleges continue to be the butt of jokes, their graduates are getting the last laugh as they out-earn bachelor's degree holders and their alma maters finally earn respect. Across the board, community colleges are slowly stacking up against their university counterparts by offering better schedule flexibility, smaller class sizes and comparatively rigorous coursework, including bachelor's degree programs in some states at a fraction of the university cost. First-time college entrants find those qualities most appealing — as do university students transferring to community colleges, an emerging trend that reverses the traditional path of "upgrading" from a two-year to a four-year institution." You can read the entire story and get more information about the rankings and the methodology used to determine them at <https://wallethub.com/edu/best-worst-community-colleges/15076/>.

SmartAssets - SmartAssets looked at close to seven hundred public community colleges across the country in order to find the best of the best, and Northern Oklahoma College came in at #8! The college ranked high in the list according to the following factors: the cost to attend the college, the ratio of starting salary to the cost of education, the percentage of students who enroll at the community college, graduate and then go on to transfer to a four-year institution. The chart below posted in the 2014 article from SmartAssets website shows Northern Oklahoma College's rank compared to the other top ten community colleges.

According to SmartAssets 2015 publication, "Graduates of Northern Oklahoma College receive the highest return on investment of any two-year school in the U.S. The average starting salary for NOC graduates is 1.88 times the total cost of education. That can certainly help when it comes to paying off student loans."



Link to SmartAssets article: <https://smartasset.com/student-loans/the-best-community-colleges-of-2015>

Board of Regents*



STAN BROWNLEE (Enid, OK), Chair, is a retired Enid businessman. After earning an accounting degree from University of Central Oklahoma, Stan Brownlee started his career as a public accountant in 1968. He worked over three decades in public accounting as a partner in Randall, Brownlee, Donehue and Company, then with BKD after a merger in 1996. After retiring in 2002, he was a personal asset manager for Harold Hamm until 2011. Stan works with many area nonprofit organizations, serving as a mentor for local children since 1987. Regent Brownlee was appointed by Gov. Mary Fallin in 2015 to a five-year term as a member of the Northern Oklahoma College Board of Regents. His term expires in June 2020.



CHAD DILLINGHAM (Enid, OK), Vice-Chair, is President and Co-Owner of Dillingham Insurance in Enid. Regent Dillingham is also actively involved in the ownership and management of their family ranching operations north of Nash. He attended Kansas University with studies in Business Communications and Personnel Administration. Regent Dillingham was appointed by Gov. Mary Fallin in 2016 to a five-year term as a member of the Northern Oklahoma Board of Regents. His term expires in June 2021



DALE DEWITT, (Braman, OK), Secretary, is a retired educator and former Oklahoma State Representative, District 38. Dale continues his farming and ranching operation in the Braman area. He attended Northern Oklahoma College receiving an Associate degree in Science and Oklahoma State University receiving a Bachelor of Science degree in Agriculture Education. Regent DeWitt was appointed by Gov. Mary Fallin in 2017 to a five-year term as a member of the Northern Oklahoma Board of Regents. His term expires in June 2019



JEFFREY T. COWAN (Ponca City, OK), Member, is President of RCB Bank, Ponca City. He received a Bachelor of Science degree in Business Administration with emphasis in Economics and Marketing from Pittsburg State University. Regent Cowan was appointed by Gov. Mary Fallin in 2011 to serve an unexpired term ending June 30, 2014. He was reappointed by Gov. Mary Fallin in 2014 to his five-year term as a member of the Northern Oklahoma Board of Regents. His term expires in June 2019.



LINDA J. BROWN (Ponca City, OK), Member, is Vice-President of Evans & Associates Enterprises, Inc. in Ponca City. Regent Brown attended Northwestern Oklahoma State University. Regent Brown was appointed by Gov. Frank Keating in 2002 to serve an unexpired term ending June 30, 2003, succeeding Bill O'Conner. She was appointed by Gov. Brad Henry in 2003, reappointed in 2008 to her second five-year term and reappointed by Gov. Mary Fallin in 2013 to a third five-year term as a member of the Northern Oklahoma College Board of Regents. Her term expires in June 2018.

*Updated on June 2017

President of NOC



Our outstanding institution creates opportunities which shape and transform the lives of its nearly 4,600 students. NOC's influence has not gone unnoticed; as external organizations such as SmartAssets and WalletHub rank Northern among the best in the nation.

Northern offers access to an affordable, quality education. Our committed faculty and staff members accommodate individual student needs with a personal touch. Teachers advise individuals to achieve their specific career goals. NOC fosters a warm academic environment described by students as an inviting family atmosphere.

The talent, dedication and passion of our students, faculty, and staff instill our locations in Tonkawa, Enid and Stillwater with distinct character. NOC offers the place, price, and programming to fit a broad array of life situations. We effectively serve many different types of individuals. Our diverse student body is comprised of young people fresh from high school, as well as those who stepped out of college and feel ready to return to the classroom. We also embrace adults making the brave decision to enter college for the first time—improving life for both themselves and their families.

Our campuses share a common trait: persistence in academic pursuit in a nurturing environment. I take pride in watching all that NOC alumni accomplish as they transition from learners to earners and leaders. Our alumni enter the workforce equipped to immediately impact and help grow our state's economy. The majority of our graduates either go on to complete additional degrees or go right to work in successful careers.

NOC boasts a tradition of excellence made possible by our many partners who know higher education changes lives. I invite you to visit our campuses and become a part of our friendly learning community.

Sincerely,

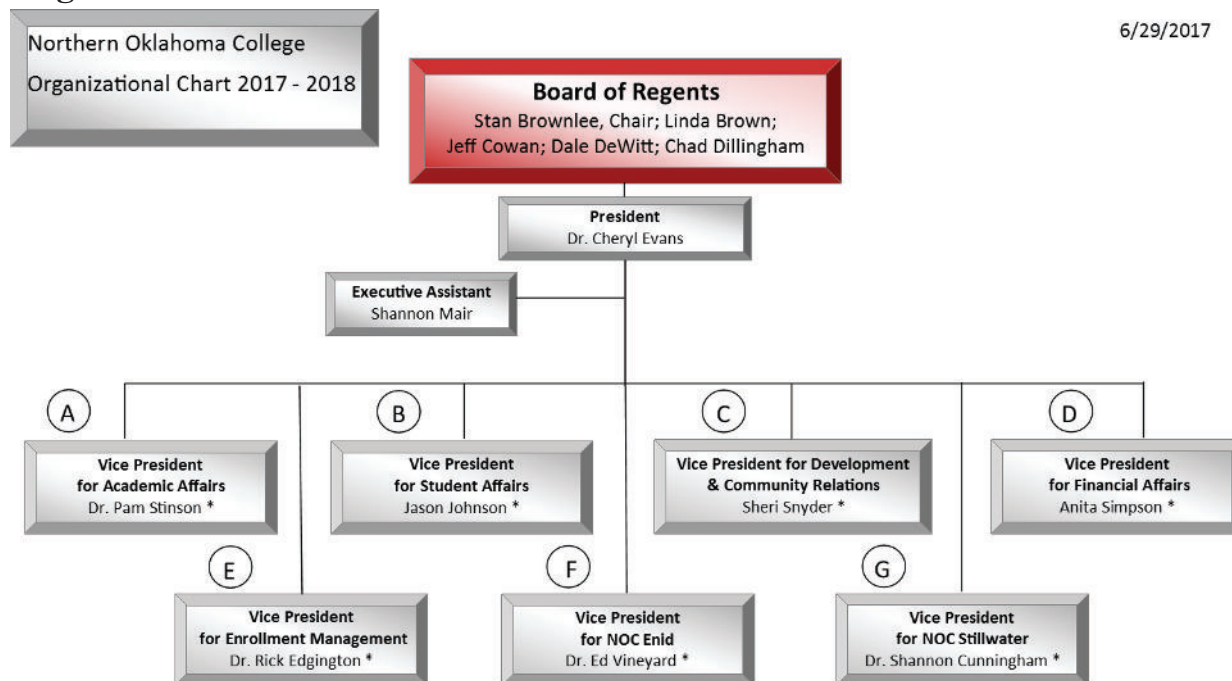
A handwritten signature in cursive script that reads "Cheryl Evans". The ink is dark and the signature is fluid.

Cheryl Evans, Ed.D.

President, Northern Oklahoma College

Organizational Chart – 2017

6/29/2017



Link to Organization Chart – <http://www.noc.edu/organizational-chart>

Administrative Council*



DR. CHERYL EVANS: President Northern Oklahoma College. Dr. Evans received a Bachelor of Arts in Mass Communications at Northwestern. She finished her Master of Arts in Communication at Wichita State University and her Doctorate in Education at Oklahoma State University. Evans is the thirteenth president since NOC was founded in 1901 and the first female NOC president. Dr. Evans has been serving as president at Northern Oklahoma College since June 1, 2011.



DR. SHANNON CUNNINGHAM: Vice President NOC Stillwater. Dr. Cunningham received an Associate of Arts degree in Agriculture from Northeastern Oklahoma A & M College in 2000, a Bachelor of Science degree in Animal Science from Oklahoma State University in 2002, a Master of Education degree in Workforce Development/Vocational Education from the University of Arkansas in 2006, and a Doctorate in Philosophy degree in Agriculture Education and Leadership from Oklahoma State University in 2013. Dr. Cunningham began her employment at Northern Oklahoma College in July 2015.



LARRY DYE: Associate Vice President Physical Operations. Mr. Dye received an Associate Degree from Northern Oklahoma College in 1967. Mr. Dye has been at Northern Oklahoma College since 1999.



DR. RICK EDGINGTON: Vice President Enrollment Management; Registrar. Dr. Edgington received an Associate of Arts degree from Northern Oklahoma College in 1984, a Bachelor of Arts degree in Music Education from Wichita State University in 1986, a Master of Education degree in Music Education from Wichita State University in 1988, and a Doctorate in Education degree in Higher Education Administration from Oklahoma State University in 2005. Dr. Edgington has been at Northern Oklahoma College since 1997.



JEREMY HISE: Athletic Director for Tonkawa and Enid. Mr. Hise has sixteen years of coaching experience at the high school, NAIA and NJCAA level, including eleven years as an associate head baseball coach at Northern. Mr. Hise is a 1998 graduate of Northern Oklahoma College. He also earned a Bachelor of Arts in History Education from the University of Central Oklahoma and a Master of Education from Northwestern Oklahoma State in 2002. Mr. Hise has been at Northern Oklahoma College since 2002.



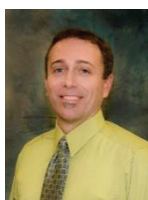
BRADLEY JENNINGS: Dean of Student Affairs in Enid. Mr. Jennings earned a Bachelor of Science degree in Technology Engineering Education from Southwestern Oklahoma State University in 2009, and a Master of Education degree in Parks and Recreation Management from Southwestern Oklahoma State University in 2013. Mr. Jennings has been at Northern Oklahoma College since 2014.



JASON JOHNSON: Vice President Student Affairs. Mr. Johnson received an Associate of Arts degree from Northern Oklahoma College in 1994, a Bachelor of Science degree from the University of Central Oklahoma in 1996, and a Master of Education in Adult Education Management and Administration from Northwestern Oklahoma State University in 2003. Mr. Johnson has been at Northern Oklahoma College since 1997.



DR. RAE ANN KRUSE: Dean of Academic Services. Dr. Kruse earned a Bachelor of Science degree in Business Education from Oklahoma State University in 1994, a Master of Education degree in Adult Education from the University of Central Oklahoma in 2007, and a Doctorate in Education in Educational Leadership Studies-School Administration from Oklahoma State University in 2012. Dr. Kruse began her employment at Northern Oklahoma College in 2015.



MIKE MACHIA: Director, Information Technology. Mr. Machia earned his Associates of Computer Science from the Community College of Vermont in 2001. He has worked in the field of IT support for Federal and State Government agencies since 1992. Mr. Machia has been at Northern Oklahoma College since 2006.



RYAN PAUL: Dean of Student Affairs in Tonkawa. Mr. Paul earned an Associate of Arts degree from Northern Oklahoma College in 1999, a Bachelor of Science degree from Oklahoma State University in 2003, and a Master of Education in Education Administration from Southwestern Oklahoma State University in 2006. Mr. Paul has been at Northern Oklahoma College since 2003.



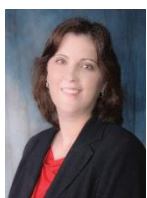
ANITA SIMPSON: Vice President Financial Affairs. Mrs. Simpson received an Associate of Science in Business Administration from Northern Oklahoma College in 1986, a Bachelor of Science in Business Administration from Oklahoma State University in 1988, and passed the Certified Public Accountant exam in August 1999. Mrs. Simpson has been at Northern Oklahoma College since 1994.



EUGENE SMITH: Diversity Officer and Coordinator of International Students. Mr. Smith received his Bachelor of Science degree from Morgan State University in 2011, and a Master of Arts in Higher Education Administration from Morgan State University in 2013. Mr. Smith began his employment at Northern Oklahoma College in April 2016.



SHERI SNYDER: Vice President Development & Community Relations. Mrs. Snyder received an Associate of Arts in Social Science from Northern Oklahoma College in 1991, a Bachelor of Science in Sociology from Oklahoma State University in 1993, and a Master of Education in Adult Education Management and Administration from Northwestern Oklahoma State University in 2003. Mrs. Snyder has been at Northern Oklahoma College since 1993.



DR. PAM STINSON: Vice President Academic Affairs. Dr. Stinson earned a Bachelor of Arts in English Education from Northeastern State University in 1987, a Master of Arts in Communications from Northeastern State University in 1989, and a Doctor of Philosophy in Composition/Rhetoric and Renaissance Literature from Oklahoma State University in 1997. She taught English at Northern from 1996-1999 and 2001-2008, and she served as chair of the Language Arts Division from 2006-2008. Dr. Stinson has been at Northern Oklahoma College since 1996.



KIRBY TICKEL-HILL: Director of Development and Donor Relations. Mrs. Tickel-Hill received an Associate of Arts degree in Education from Northern Oklahoma College in 2003, a Bachelor of Business Administration from University of Central Oklahoma in 2005, and a Master of Business Administration from Cameron University in 2009. Mrs. Tickel-Hill has been at Northern Oklahoma College since 2005.



DR. EDWIN R. VINEYARD: Vice President NOC Enid. Dr. Vineyard received an Associate of Science degree in Business Administration from Northern Oklahoma College in 1981, a Bachelor of Science degree in Management and Economics from Oklahoma State University in 1983, a Master of Science degree in Economics from Oklahoma State University in 1987, and a Doctor of Education in Higher Education Administration from Oklahoma State University in 1989. Dr. Vineyard started teaching part-time at Northern Oklahoma College in 1985. Dr. Vineyard has been full-time at Northern Oklahoma College since 1989.

*Updated July 2017

Grants – 2016*

Federal Grants	Expenditures
U.S. Department of Education	
<i>Office of Postsecondary Education</i>	
Federal Pell Grant Program	\$ 6,620,775.75
Federal Direct Loan Programs	\$6,657,163.76
Federal Supplemental Education Opportunity	\$111,480.09
Federal Work Study Program	\$80,353.61
Total Student Financial Aid	\$13,469,773.21
<i>Office of Postsecondary Education</i>	
Trio Upward Bound	\$209,370.20
Gaining Early Awareness and Readiness for Undergraduate Program (GEAR-UP)	\$41,377.65
GEAR UP: NOC Leadership Camp	\$13,262.42
Project AAIMS (Advancing American Indians in Medical and Stem Careers)	\$5,770.47
Native American-Serving Non-Tribal Institutions Program (NASNTI)	\$207,405.32
Vocational Education National Centers for Career and Technical Education	\$69,810.30
Total Office of Postsecondary Education	\$546,996.36
Total U.S. Department of Education	\$14,016,769.57
U.S. Department of Health and Human Services	
Temporary Assistance for Needy Families (TANF)	\$120,482.43
Oklahoma State Regents for Higher Education Child Care Development Block Grant Refugee & Entrant Assistance	\$74,138.02
Total U.S. Department of Health and Human Services	\$194,620.45
Corporation for National and Community Service	
AmeriCorps	\$17,399.69
Total Expenditures of Federal Awards	\$14,228,789.71

State Grants	Expenditures
Oklahoma's Promise (previously known as OHLAP)	\$702,928.76
State Regents Academic Scholarships	\$30,279.00
Indian Gaming Management Curriculum	\$9,490.20
Oklahoma Arts Council (OAC)	\$1,250.00
Oklahoma Tuition Aid Grant Program (OTAG)	\$324,131.16
Quality Initiative Grant, Institution for Tribal Leadership	\$87,221.19
Teacher Education and Compensation Helps	\$47,001.30
Total State Expenditures	\$1,203,301.61

Foundation Grants	Expenditures
Phillips 66 – Process Technology Grant	\$6,750.00
Total Foundation Expenditures	\$6,750.00

*Tentative figures collected on June 2017 for FY 2017.

Advisory Board Members

Agriculture	Scott Blubaugh, Insurance agent and Angus ranch owner
	Calvin Crumrine, Crumrine Auctioneers
	Dale DeWitt, Former State Representative, Braman
	Keith James, JKJ Auctioneers
	Jeremy Johns, P&K Equipment
	Allen Miller, OK Dept. of Career Tech Ed. Ag Program Specialist
	Mary Steichen, Silver Top Farms
	Francie Tolle, USDA Regional Office Director
Business	Jon Archer, Bankers Life and Casualty Insurance
	Rich Cantillion, Ponca City Chamber of Commerce
	Angie Drake, Charles Machine Works
	Dr. David Hawkins, Northwestern Oklahoma State University
	Molly Kyler, Organizational & Leadership Development Director
	Mark Macy, Management Training Consultant
	Bob Palmer, On Cue
	Brad Purdy, First National Bank, Ponca City
Criminal Justice	Chief Don Bohon, Ponca City Police
	Lt. Colt Chandler, OSU Police
	Chief John Cooper, Tonkawa Tribal Police
	Chief David Dallagher, Newkirk Police
	Director Stan Florence, OK State Bureau of Investigation
	Undersheriff Sean Grigsba, Kay County
	Sheriff Steve Kelley, Kay County
	Chief Brian O'Rourke, Enid Police
	Director John Scully, OK Bureau of Narcotics
	Teena Stone, Office of Juvenile Authority
	Capt. Tim Tipton, OK Highway Patrol
	Chief Brian Thomas, Perry Police
	Chief John Whitham, Tonkawa Police
	Chief Dewayne Wood, Blackwell Police
Digital Media Institute	Duncan Brinsmead, Autodesk/Alias
	Kevin Hanley, Creative Video Works, Inc.
	Piyush Patel, PL Studios
	Vico Sharabani Rhino VJX and Design
	Scott Squires, Industrial Light and Magic
	Jason Schleifer, Freelance Artist
	Kyle Terry, Boiling Point Media
	Craig Woods, Ag. Comm. Services
Health, Physical Education & Recreation	Dawn Cockrum, Ponca City YMCA
	Joanna Crow, Glencoe Public Schools
	Eddie Cumpston, Finer Physiques Nutrition and Tanning
	Kayla Dickson, Enid Public Schools
	David Riesen, Pioneer High School
	Jason Vlastaras, OSU Asst. Director of Student Fitness

Mass Communications	Sean Anderson, Team Radio
	Shelby Cargill, The House FM
	Scott Cloud, Newkirk Herald-Journal
	Jeff Couch, Cumulus Radio
	Jeff Funk, Enid News-Eagle
	Charles Gerain, Blackwell Journal-Tribune
	Tom Muchmore, Ponca City News
	Ricky Roggow, Chisholm Trail Radio
Nursing/Allied Health	Alliance Health Ponca City
	Blackwell Regional Hospital
	Cancer and Blood Care Center
	The Children's Center Rehabilitation Hospital
	Circle of Love Hospice
	Enid Mercy Oncology
	Greenbrier Nursing Home
	Hospice of North Central Oklahoma, Inc.
	Integrus Bass Baptist Hospital
	Mays Home Health
	Meadowlake
	Optim Oncology
	OU Childrens Hospital
	OU Medical Center
	OU Medical Center of Edmond
	Perry Memorial Hospital
	Precise Home Health
	Ponca City Nursing Home and Rehab
	Renaissance Assisted Living
	Ross Home Health
	St. Anthony's
	St. Mary's Hospital
	Stillwater Medical Center
	United Methodist Home of Enid, Inc. DBA The Commons
	Via Christi Village
	Valley Hope Alcoholism and Drug Addiction Treatment Center
	Westhaven Nursing and Rehab Center
	Willow Haven Nursing Home
Process Technology	AeroTek
	Air Products
	AirLiquide
	CF Industries
	Continental Technologies
	FRI – Fractionation Research Institutions
	GE Oil and Gas
	Jupiter Sulfur
	Koch Industries
	NCRA Refining, Kansas
	OG&E
	Oklahoma Municipal Power Authority
	Phillips 66
	Ponca City Development Authority

Community Supporters/Partnerships

Academic Partners

- Enid Higher Education Council
- Enid Public Schools University Center
- Institute for Tribal Government
- NOC/NWOSU Bridge Program
- NOC/OSU Gateway Program
- Oklahoma Manufacturing Alliance
- University Center of Ponca City

Articulation Agreements

- Baker University
- Midwestern State University
- Northeastern State University
- Northwestern Oklahoma State University
- Oklahoma State University
- University of Central Oklahoma

Career Technology Partners

- Autry Technology Center – Enid
- Chisholm Trail Technology Center – Omega
- High Plains Technology Center – Woodward
- Meridian Technology Center – Stillwater
- Northwest Technology Center – Alva and Fairview
- Pioneer Technology Center – Ponca City

Sponsored Programs

- GEAR UP
- Northwest Post-Secondary Consortium
- Reach Higher
- Scholars for Excellence in Childcare
- TAACT – Oklahoma Works
- TANF – Temporary Assistance for Needy Families
- Upward Bound
- NASNTI

Foundation Board Members for 2016

NORTHERN OKLAHOMA COLLEGE FOUNDATION, INC. 2017 - 2018 BOARD OF TRUSTEES

EXECUTIVE COMMITTEE

Chairman: Mr. Mark Detten
Vice Chairman: Mr. John Martin
Past Chairman: Mr. Tom Poole
Chief Executive Officer: Dr. Cheryl Evans
Executive Director: Mrs. Sheri Snyder
Development Officer: Mrs. Kirby Tickel-Hill
Treasurer: Mrs. Anita Simpson
Secretary: Mrs. Candy Oller

Group 1 Trustee (Northern Oklahoma College Regents)

1. Regent Linda Brown (*Term ends 6-30-2018*)
2. Regent Jeff Cowan (*Term ends 6-30-2018*)

Group 2 Trustee (NOC Leadership)

1. Dr. Cheryl Evans, NOC President
2. Mrs. Sheri Snyder, Executive Director
3. Mrs. Anita Simpson, Treasurer
4. Mrs. Kirby Tickel-Hill, Director of Development & Donor Relations
5. Mrs. Jill Green, Director of Alumni and Community Relations
6. Dr. Pam Stinson, Ex-Officio
7. Dr. Edwin Vineyard, Ex-Officio
8. Dr. Shannon Cunningham, Ex-Officio
9. Dr. Rick Edgington, Ex-Officio
10. Mr. Jason Johnson, Ex-Officio

Group 3 Trustee (Community Leaders)

11. Mr. Mark Detten – Tonkawa Area (*Term ends 6-30-2018*)
12. Mr. John Martin – Enid Area (*Term ends 6-30-2018*)
13. Vacant – Stillwater Area (*Term ends 6-30-2018*)
14. Vacant – Tonkawa Area (*Term ends 6-30-2018*)
15. LynnDe Funk – Enid Area (*Term ends 6-30-2019*)
16. Mr. Tom Poole – Tonkawa Area (*Term ends 6-30-2019*)
17. Mrs. Kathi Box – Enid Area (*Term ends 6-30-2019*)
18. Vacant – Stillwater Area (*Term ends 6-30-2019*)
19. Mr. David Cummings – Tonkawa Area (*Term ends 6-30-2020*)
20. Mr. Jim Rodgers – Tonkawa Area (*Term ends 6-30-2020*)
21. Mr. Mike Loftis – Stillwater Area (*Term ends 6-30-2020*)
22. Bert Mackie – Enid Area (*Term ends 6-30-2020*)

Group 4 Trustee (NOC Staff)

1. Mrs. Candy Oller, Gift Processing Coordinator
2. Mrs. Tammy Boyea, Admin. Asst. to Treasurer
3. Mrs. Kerri Gray, Institutional Scholarship Coordinator



NORTHERN
Oklahoma College
TONKAWA | ENID | STILLWATER

Academics



Academics

Contact Information

Website: www.noc.edu



Tonkawa

1220 East Grand Ave., P.O. Box 310
Tonkawa, Oklahoma 74653-0310
Main Number 580.628.6200
Main Fax 580.628.6209



Enid

100 S. University Ave., P.O. Box 2300
Enid, Oklahoma 73702-2300
Main Number 580.242.6300
Main Fax 580.548.2216



NOC/OSU Gateway Program

1118 W. Hall of Fame, P.O. Box 1869
Stillwater, Oklahoma 74076-1869
Main Number 405.744.2246
Main Fax 405.744.2227

Nursing at Stillwater Fountain Square

1311 South Western
Stillwater, Oklahoma 74074
Main Number 405.533.7601

Child Development

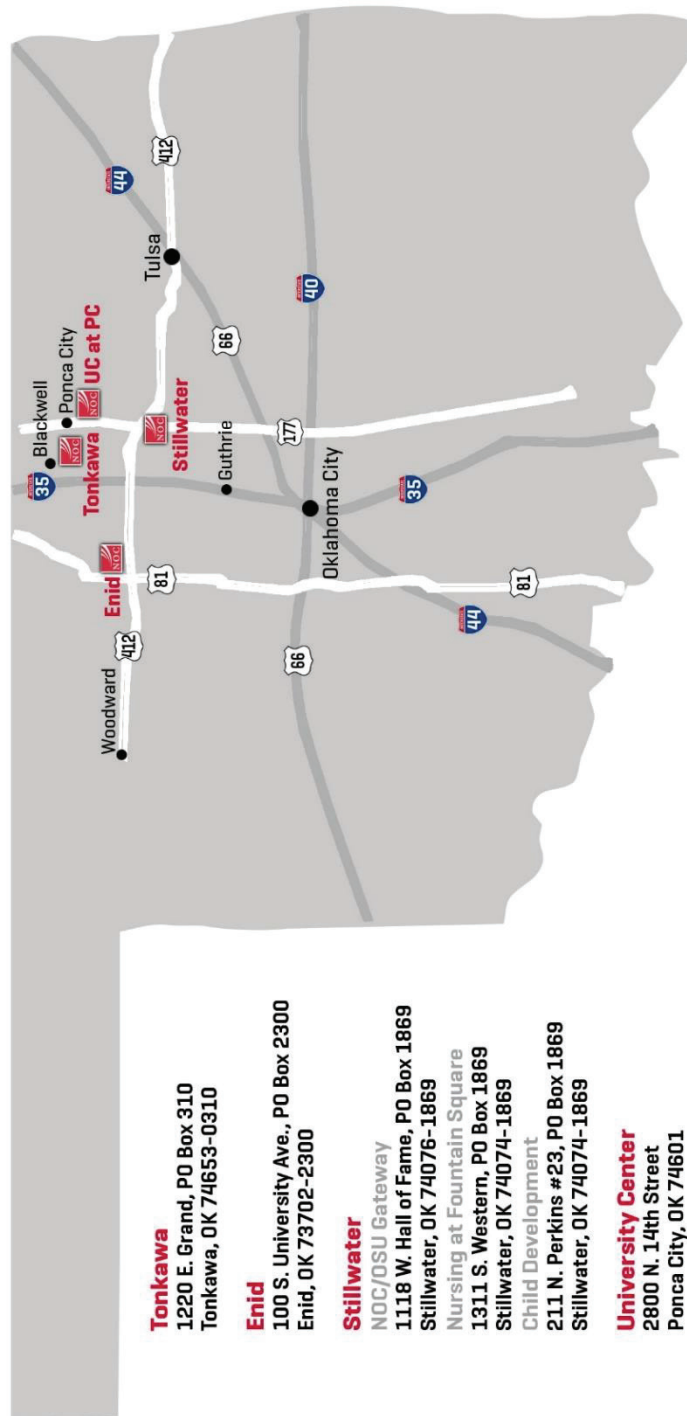
211 N. Perkins #23
Stillwater, Oklahoma 74074
Main Number 405.372.2487
Main Fax 405.533.4038
Scholars for Excellence in Child Care
Main Number 405.372.2404



University Center at Ponca City

2800 North 14th Street
Ponca City, Oklahoma 74601
Main Number 580.718.5600
Main Fax 580.762.2315

Maps State



Tonkawa



1. Markley Residence Hall
2. Wellness Center (WL)
3. A.D. Buck History Museum & Welcome Center
4. Creative Arts Building (A)
5. Harold Hall (H)
6. Foster-Piper Fieldhouse (FH)
Canaday Courts & Aquatic Center
7. Bush-Duvall Residence Hall
8. Boehme Residence Hall
9. Threlkeld Residence Hall
10. Central Hall (C)
11. Crowder Science Hall (S)
12. Memorial Student Union (SU)
Bookstore
Glass Room
Mavericks Café
Rodgers Room
Snack Bar
Walcher Conference Center (WA)



NORTHERN
Oklahoma College

Tonkawa Map

1220 E. Grand • PO Box 310
Tonkawa, OK 74653 • 580.628.6200
www.noc.edu

13. Easterling Residence Hall
14. Renfro Center (RC)
15. Wilkin Hall (W)
Dougherty Art Gallery
Wilkin Auditorium
16. Vineyard Library -
Administration Building (LA)
Cultural Engagement Center (CEC)
President's Conference Room
17. Kinzer Performing Arts Center (PA)
Eleanor Hays Art Gallery
18. Bell Residence Hall
19. Physical Plant
20. Indoor Athletic Building
21. Sport Fields
- 22 a. Agricultural Complex (AG)
b. Process Technology Facility (PT)
23. Sheep Center (SC)
24. Mavericks Residence Hall

Enid



1. Classroom Building
2. Marshall Building (ML)
Bivins Chapel
3. Harmon Science Hall (HS)
4. Astronomy Complex
Bert & Janice Mackie Planetarium
Observatory (OB)
Research Center (AR)
5. Zollars Memorial Library (ZL)
6. Everest Administration Building (EV)
7. Grace Phillips - Johnson
Art Building (AB)
8. Hallie Gantz Student Center (GU)
Bookstore/Hub
James Room
Montgomery Hall
President's Conference Room

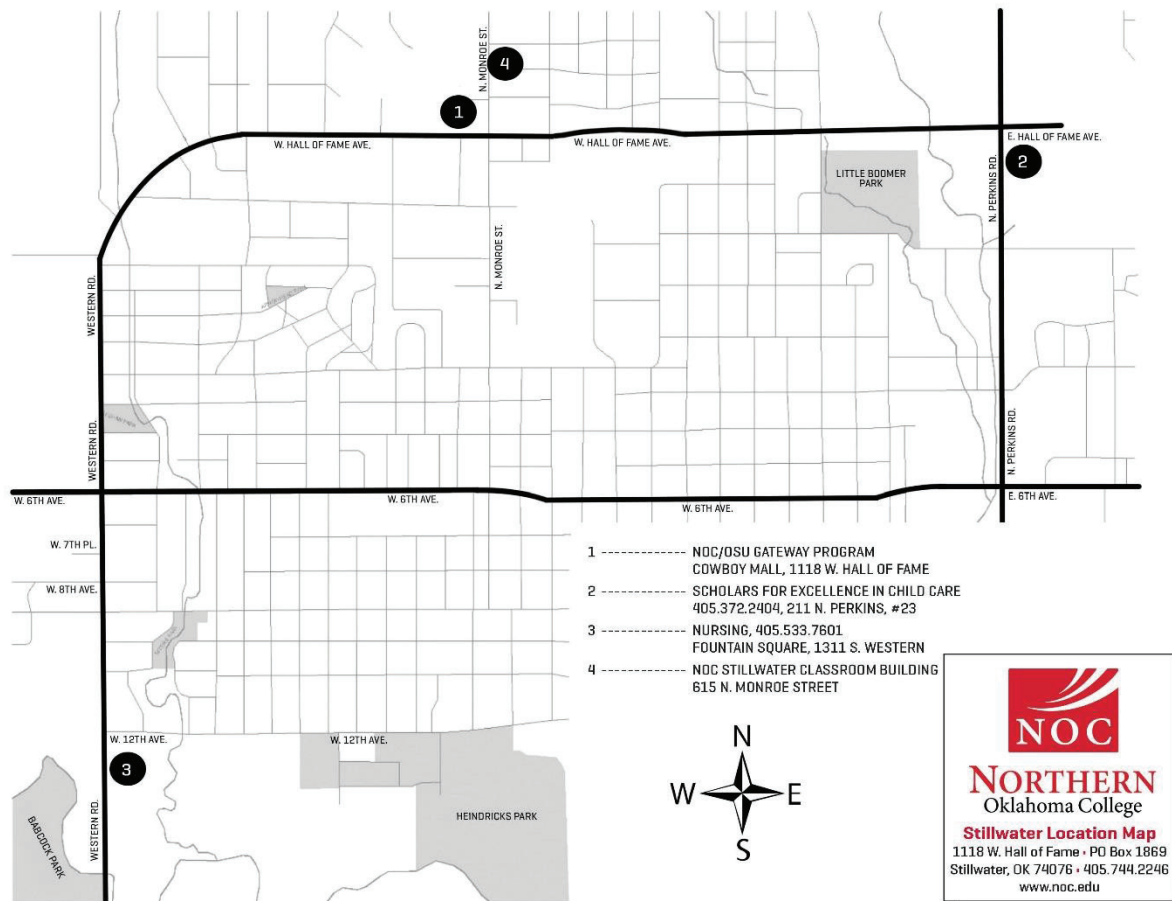


Enid Map

100 S. University • PO Box 2300
Enid, OK 73702 • 580.242.6300
www.noc.edu

9. Eugene S. Briggs Auditorium (BA)
10. Physical Plant Office
11. Physical Plant Shop
12. Lankard Residence Hall
13. Elliott-Goulter Residence Hall
14. Mabree Center Fieldhouse (MF)
15. Northern Hills Golf Course
16. Integris Indoor Baseball Facility
17. Failing Ballpark
18. Earl Butts Residence Hall
Jets Café
19. Jets Residence Hall

Stillwater



Programs of Study

Associate in Arts

Art	English-Creative Writing Option
Child Development	Enterprise Development-Business Administration Option
Child Development-Administration and Management of Child Care Program Certificate	Enterprise Development-General Studies Option
Communications-Mass Communications Option	Music
Communications-Photography Option	Music-Music Theatre Option
Criminal Justice Administration	Social Science
Education-Elementary Option	Social Science-Behavioral Science Option
English	

Associate in Science

Agricultural Sciences	Administration Option (Statewide Consortium)
Agricultural Science-Agriculture Business Option	Enterprise Development-General Studies Option (Statewide Consortium)
Agricultural Science-Agricultural Communication Option	Health, Physical Education, & Recreation
Agricultural Science-Plant and Soil Sciences Option	Health, Physical Education, & Recreation-Athletic Training Option
Agricultural Sciences-Pre-Vet Option	Health, Physical Education, & Recreation-Personal Trainer Option
Arts and Sciences-General Studies	Mathematics and Physical Science
Arts and Sciences-International Studies Option	Mathematics and Physical Science-Astronomy Option
Biological Sciences	Mathematics and Physical Science-Chemistry/Physics Option
Biological Sciences-Pre-Medicine Option	Mathematics and Physical Science-Mathematics Option
Biological Sciences-Pre-Pharmacy Option	Mathematics and Physical Science-Pre-Engineering Option
Business Administration	Nursing, Pre-Professional, Pre-Baccalaureate
Business Administration-International Business Option	
Business Administration-Management Information Systems Option	
Computer Science, Pre-Professional	
Enterprise Development-Business	

Associate in Applied Science

Applied Technology-Military Services Option
Business Management
Business Management-Accounting Area of Emphasis
Business Management-Entrepreneurship Option
Digital Media Animation and Design (DMAD)
Engineering and Industrial Technology-Power Generation Option
Engineering and Industrial Technology-Process Technology Option
Nursing-Registered Nurse (RN) Option
Nursing-Practical Nurse Eligibility Certificate

Accreditations

Higher Learning Commission – North Central Association of Colleges and Schools

- Year of Last Comprehensive Evaluation 2007 – 2008
- Date for Next Comprehensive Evaluation February 26-27, 2018

Accreditation Council for Business Schools and Programs

- Year of Last Comprehensive Evaluation 2007 – 2008
- Date for Next Comprehensive Evaluation March 5-7, 2018

Nursing Accreditation

- Accreditation Commission for Education and Nursing (ACEN) – formerly known as the National League for Nursing Accrediting Commission
 - Year of Last Comprehensive Evaluation 2013 – 2014
 - Year for Next Comprehensive Evaluation 2022 – 2023
- Oklahoma Board of Nursing
 - Year of Last Comprehensive Evaluation 2015 – 2016
 - Year for Next Comprehensive Evaluation Not required if ACEN accredited

Honor Societies

- Kappa Beta Delta (Business)
- Phi Theta Kappa (International Honor Society)
- Delta Psi Omega (Drama)

High-Impact Strategies

NOC participates in Oklahoma and national initiatives in alignment with Complete College America goals for student retention and completion of degrees, including the following:

- Offering co-requisite models in English composition and math that allow students to begin earning college credit with the support of concurrent remedial support sections.
- Designing degree sheets with math courses aligned with the program of study
- Providing a semester-by-semester recommended course sequence for all degrees
- Tracking program-specific learning outcomes for all degrees and for general education competencies
- Offering students applied learning experiences through internships, job shadowing, and service learning
- Evaluating key performance indicators to determine which courses and programs have the highest success rates
- Utilizing an Early Alert System to identify students who are struggling and help them access needed resources
- Creating articulation agreements with partner institutions for 2 + 2 degree plans and smoother transfer
- Working with partner institutions to aid students who transfer without a credential in earning that degree through reverse transfer



NORTHERN
Oklahoma College
TONKAWA | ENID | STILLWATER

Students

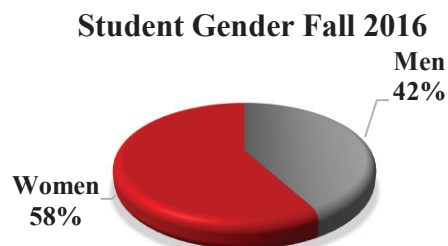
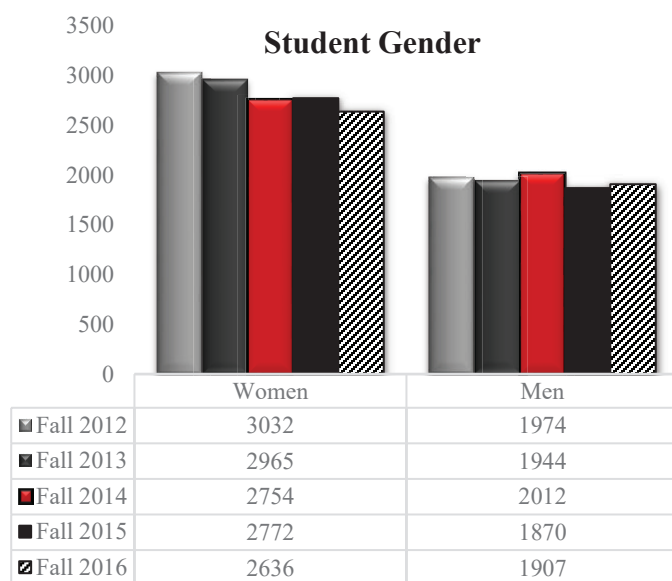


Students

Student Profiles by Fall – All data in this section is for fall unless otherwise indicated.

Student Gender

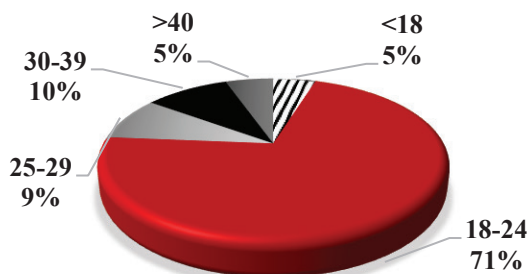
	Fall 2012	Fall 2013	Fall 2014	Fall 2015	Fall 2016
Men Full-time	1,097	1,024	996	944	956
Men Part-time	877	920	1,016	926	951
Total	1,974	1,944	2,012	1,870	1,907
Women Full-time	1,482	1,324	1,119	1,132	1,132
Women Part-time	1,550	1,641	1,635	1,640	1,504
Total	3,032	2,965	2,754	2,772	2,636



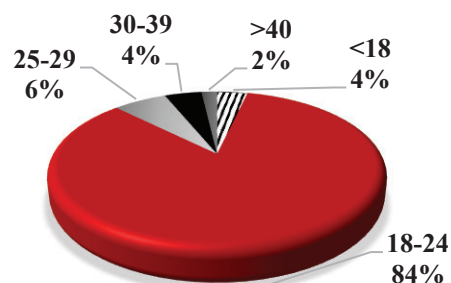
Student Age

	Men						Women				
	Fall 2012	Fall 2013	Fall 2014	Fall 2015	Fall 2016		Fall 2012	Fall 2013	Fall 2014	Fall 2015	Fall 2016
<18	79	76	80	49	69		162	159	196	110	127
18-24	1,524	1,558	1,641	1,553	1,599		1,912	1,943	1,845	2,003	1,884
25-29	166	144	133	148	121		367	299	248	229	230
30-39	126	97	102	85	83		336	344	290	272	252
>40	79	69	56	35	35		255	220	175	158	143
Total	1,974	1,944	2,012	1,870	1,907		3,032	2,965	2,754	2,772	2,636

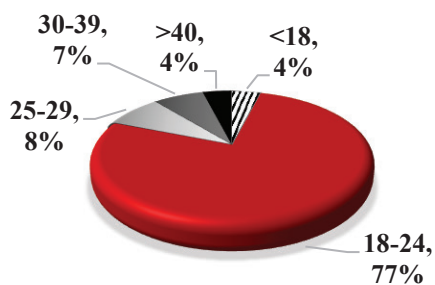
**Student Age Distribution -
Women Fall 2016**



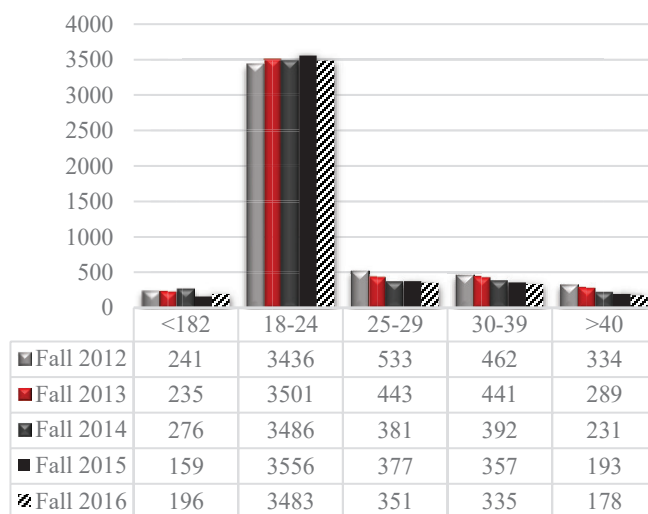
**Student Age Distribution -
Men Fall 2016**



**Student Age Distribution -
Fall 2016**



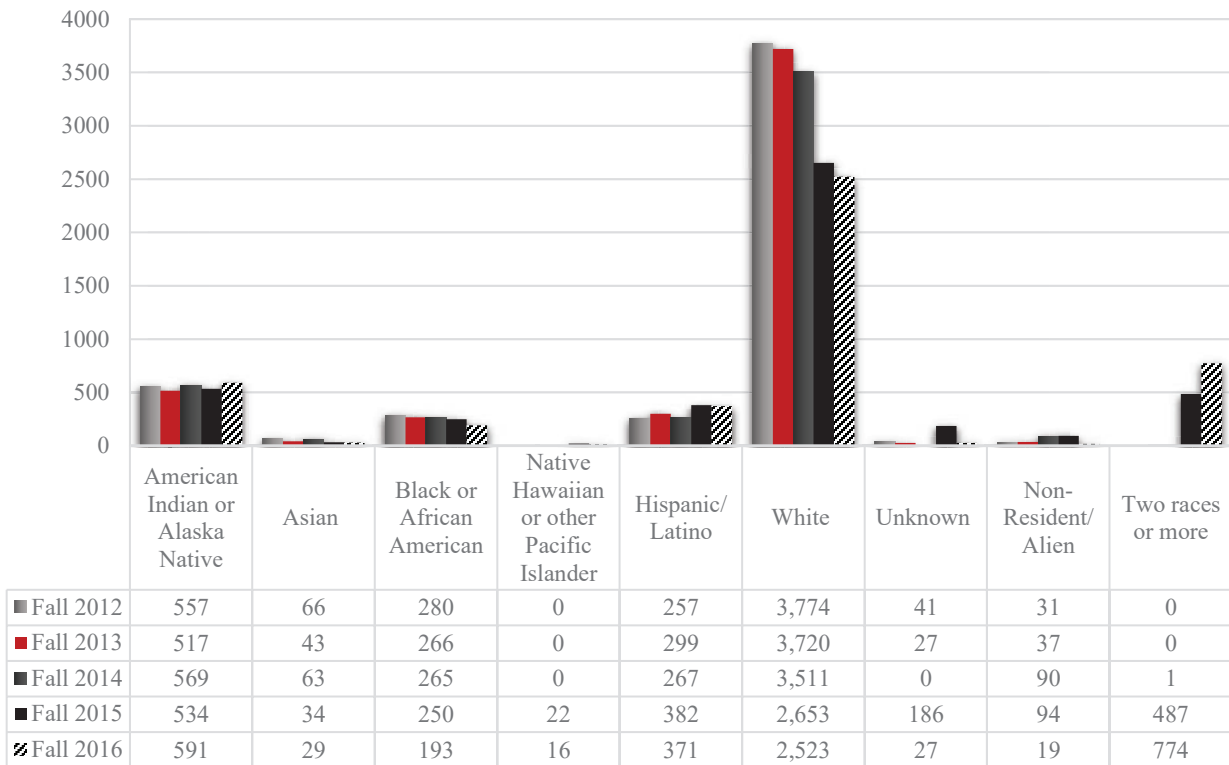
Student Age Distribution



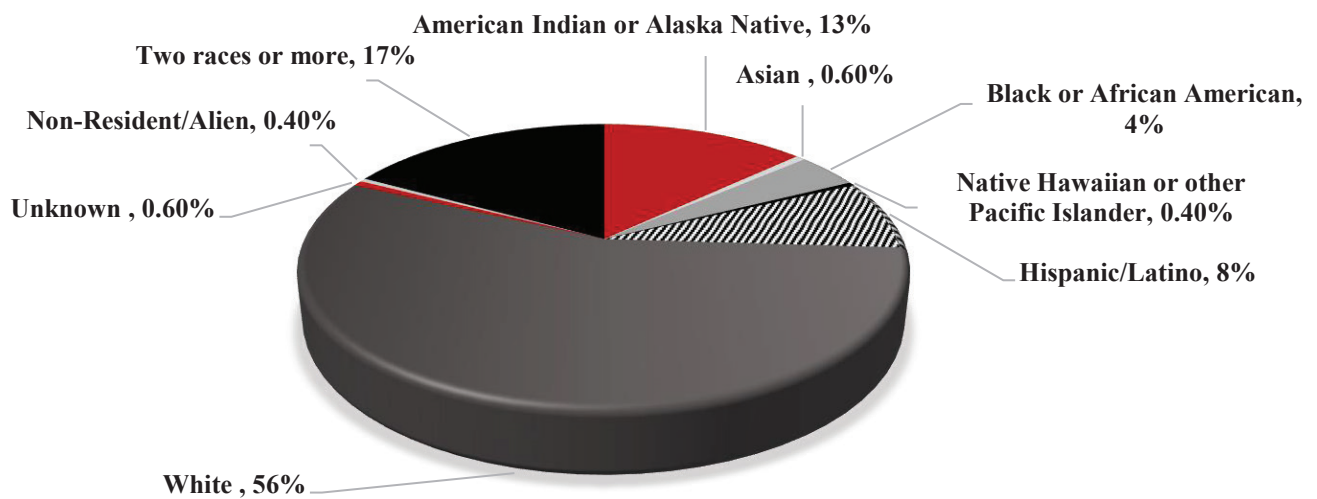
Student Race/Ethnicity

	Fall 2012	Fall 2013	Fall 2014	Fall 2015	Fall 2016
American Indian or Alaska Native	557	517	569	534	591
Asian	66	43	63	34	29
Black or African American	280	266	265	250	193
Native Hawaiian or other Pacific Islander	0	0	0	22	16
Hispanic/Latino	257	299	267	382	371
White	3,774	3,720	3,511	2,653	2,523
Unknown	41	27	0	186	27
Non-Resident/Alien	31	37	90	94	19
Two races or more	0	0	1	487	774

Student Race/Ethnicity



Student Race/Ethnicity Fall 2016



Student Residence*

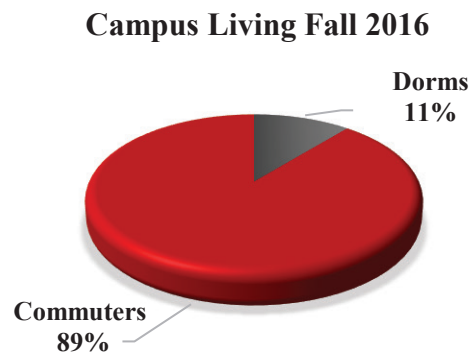
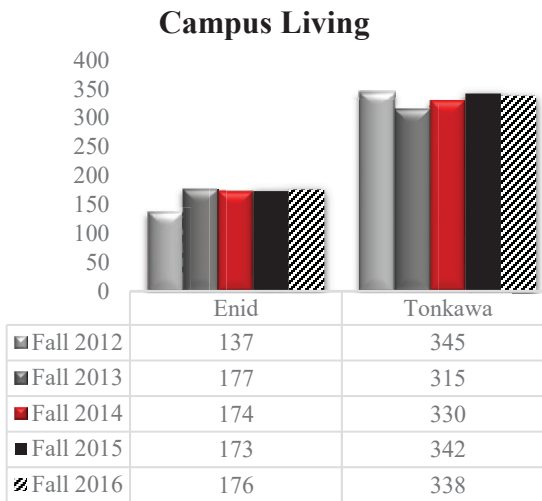
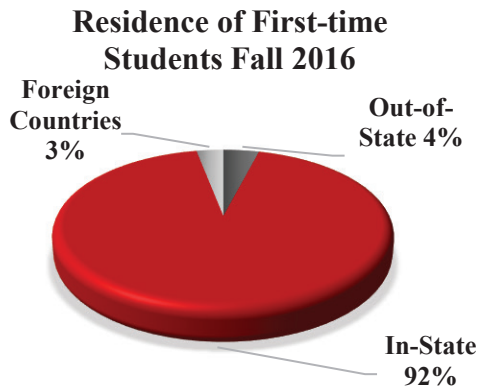
	Fall 2012	Fall 2013	Fall 2014	Fall 2015	Fall 2016
Arkansas	0	6	1	0	1
California	3	2	4	3	2
Colorado	0	1	2	1	0
Florida	1	1	1	4	2
Georgia	1	0	2	2	1
Idaho	0	0	0	2	0
Illinois	1	3	1	1	0
Indiana	3	0	0	1	0
Iowa	0	1	0	0	0
Kansas	5	2	4	7	4
Kentucky	0	0	1	0	0
Louisiana	0	0	0	1	0
Maryland	0	2	1	0	0
Massachusetts	0	1	0	0	0
Michigan	0	0	0	1	0
Missouri	0	1	0	2	1
Nebraska	0	0	1	0	1
New Hampshire	0	1	0	0	0
New Jersey	0	0	0	1	3
New Mexico	0	1	0	1	2
New York	2	3	1	0	2
Ohio	0	0	0	2	0
Oklahoma	948	938	923	896	790
Oregon	1	0	0	0	0
Rhode Island	0	0	0	1	0
South Carolina	1	0	0	0	0
Tennessee	0	0	2	0	1
Texas	23	22	37	23	18
Utah	0	0	2	0	0
Virginia	0	0	0	0	0
Marshall Islands	0	0	2	0	0
Puerto Rico	0	0	0	2	0
Foreign Countries	16	17	57	54	27

* Numbers for first-time students

Student Housing*

Campus Living	Fall 2012	Fall 2013	Fall 2014	Fall 2015	Fall 2016
Men - Enid	79	96	90	93	101
Men - Tonkawa	181	167	176	176	165
Women - Enid	58	81	84	80	75
Women - Tonkawa	164	148	154	166	173
Total	482	492	504	515	514

* Data obtained from Student Affairs Office



Enrollment

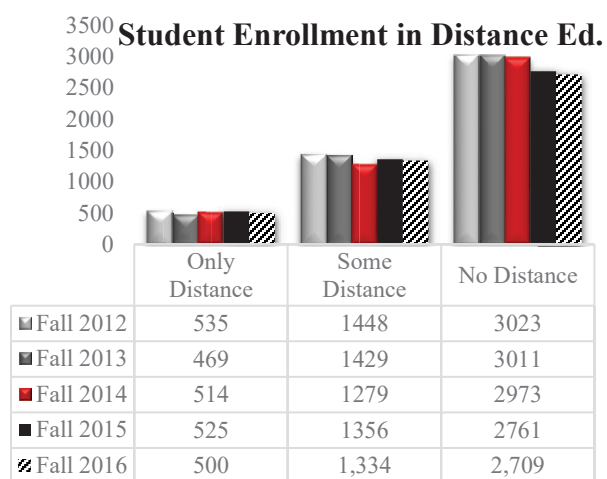
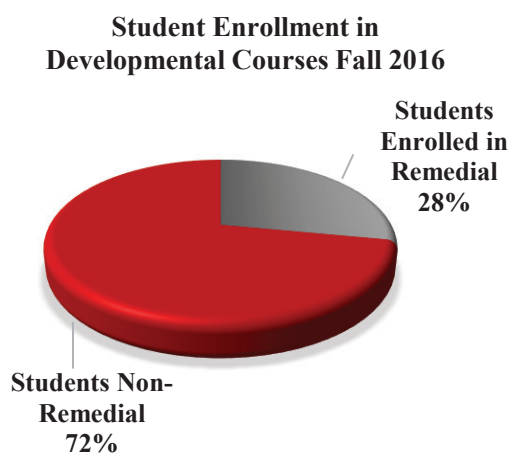
Student Enrollment

	Fall 2012	Fall 2013	Fall 2014	Fall 2015	Fall 2016
Full-time Students	2,579	2,348	2,115	2,076	2,088
Part-time Students	2,166	2,561	2,651	2,566	2,455
Total Enrollment	5,006	4,909	4,766	4,642	4,543

Student Enrollment in Developmental Courses*

	Fall 2012	Fall 2013	Fall 2014	Fall 2015	Fall 2016
1 Remedial Course	908	949	903	995	902
2 Remedial Courses	237	232	247	245	216
3 Remedial Courses	131	113	111	123	155
4 or more Remedial Courses	82	76	56	18	14
Total Students	1,358	1,370	1,317	1,381	1,287
Total Seats	2,105	2,060	1,955	1,926	1,855

* Data retrieved from Student Information System



Student Enrollment in Distance Education

	Fall 2012	Fall 2013	Fall 2014	Fall 2015	Fall 2016
Only Distance Education	535	469	514	525	500
Some Distance Education	1,448	1,429	1,279	1,356	1,334
No Distance Education	3,023	3,011	2,973	2,761	2,709

Courses

Number of Online and Fast-Track Courses for the Academic Year*

	AY-2012	AY-2013	AY-2014	AY-2015	AY-2016
Online Course Selections (number of different courses)	41	49	50	51	55
Total Online Sections	110	105	112	122	127
8 Week Course Selections (number of different courses)	50	48	39	41	35
Total 8 Week Sections Offered	131	124	96	103	78
ITV Course Selections (number of different courses)	82	82	81	80	72
Total ITV Course Sections Offered	477	477	447	446	389

*Data retrieved from Student Information System (does not include summer courses for that academic year)

Student Graduation/Completion

Degrees Awarded

	AY-2011	AY-2012	AY-2013	AY-2014	AY-2015
Associate Degrees Awarded	842	787	853	800	815

Student Retention

	Fall 2011	Fall 2012	Fall 2013	Fall 2014	Fall 2015
Retention First-Time Student					
• Full-time	52%	51%	55%	60%	61%
• Part-time	35%	43%	37%	41%	33%

Student Graduation Rates

	AY-2011	AY-2012	AY-2013	AY-2014	AY-2015
Overall Graduation Rate	23%	19%	20%	25%	29%
Transfer-out Rate	23%	24%	28%	21%	23%
Graduation Rate for Men	20%	17%	18%	24%	29%
Graduation Rate for Women	25%	21%	23%	26%	29%

Student Reverse Transfer

	AY-2014*	AY-2015	AY-2016
Degrees Awarded through Reverse Transfer	527	314	163

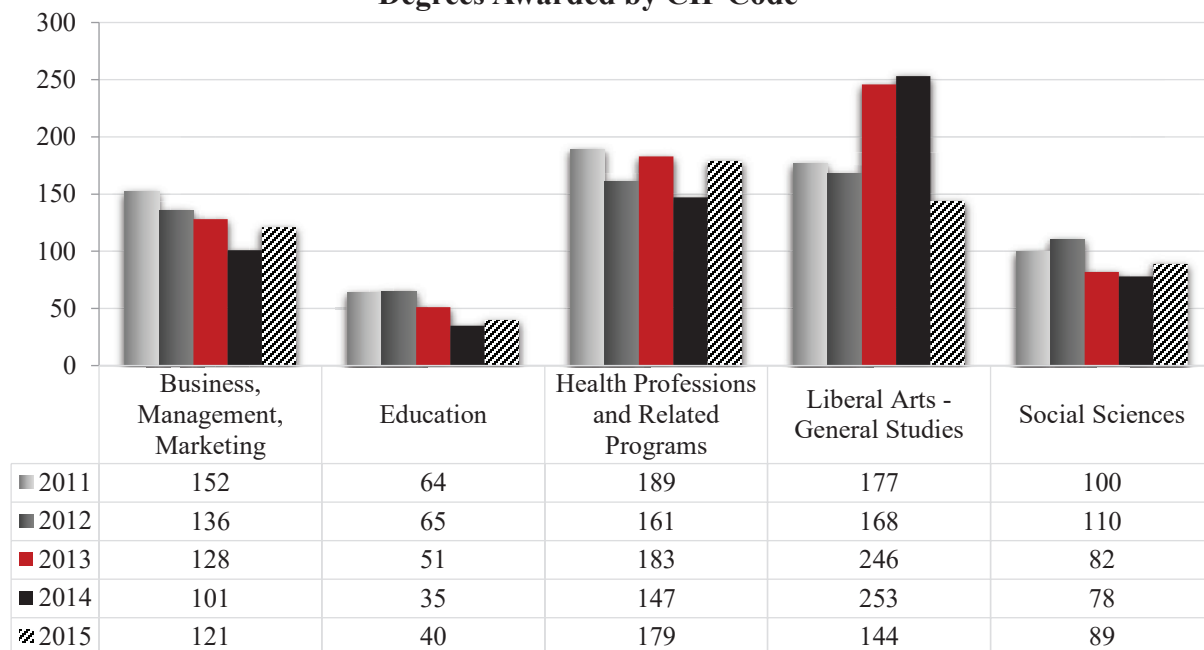
*This includes the Spring 2014, Summer 2014, Fall 2014, Spring 2015. Obtained from the Office of the Registrar.

Degrees Awarded (CIP Code)*

	AY-2011	AY-2012	AY-2013	AY-2014	AY-2015
Agriculture	11	16	17	22	22
Biological	11	12	10	13	22
Business, Management, Administrative Assistant, Technology	152	136	128	101	121
Information Technology	11	13	14	11	9
Communication, Journalism	9	10	3	0	0
Computer and Information Sciences	4	3	3	6	7
Education	64	65	51	35	40
Engineering and Related Fields	38	34	41	32	27
English Language and Literature	0	0	8	12	11
Child Care and Support Services Management	24	27	26	21	19
Health and Physical Education/Fitness	0	0	31	32	31
Health Professions and Related Programs	189	161	183	147	179
Criminal Justice/Police Science	22	27	11	25	20
Liberal Arts – General Studies	177	168	246	253	144
Physical Science & Mathematics	5	12	9	28	11
Military Applied Sciences	0	0	0	0	9
Social Sciences	100	110	82	78	89
Visual and Performing Arts	17	20	35	32	37

*Multiple degrees in each classification according to CIP (Classification of Instrumental Programs) Code

Degrees Awarded by CIP Code



Tuition and Fees by Location In-State (per credit hour)*

	2012-2013	2013-2014	2014-2015	2015-2016	2016-2017
	In - State	In - State	In - State	In - State	In - State
Tonkawa					
Tuition	\$65.65	\$69.50	\$74.00	\$78.00	\$83.00
Fees	29.20	31.15	33.30	37.15	39.50
Total	\$94.85	\$100.65	\$107.30	\$115.15	\$122.50
Enid					
Tuition	\$65.65	\$69.50	\$74.00	\$78.00	\$83.00
Fees	42.20	44.15	46.30	50.15	52.50
Total	\$107.85	\$113.65	\$120.30	\$128.15	\$135.50
NOC/OSU Gateway					
Tuition	\$65.65	\$69.50	\$74.00	\$78.00	\$83.00
Fees	195.90	209.05	204.55	214.25	229.75
Total	\$261.55	\$278.55	\$278.55	\$292.25	\$312.75
UC – Ponca City					
Tuition	\$65.65	\$69.50	\$74.00	\$78.00	\$83.00
Fees	70.00	70.00	70.00	75.00	81.50
Total	\$135.65	\$139.50	\$144.00	\$153.00	\$164.50
Concurrent & Ed Centers					
Tuition	\$65.65	\$69.50	\$74.00	\$78.00	\$83.00
Fees	45.00	45.00	45.00	50.00	55.00
Total	\$110.65	\$114.50	\$119.00	\$128.00	\$138.00
Internet					
Tuition	\$65.65	\$69.50	\$74.00	\$78.00	\$83.00
Fees	90.20	90.20	90.20	95.20	100.20
Total	\$155.85	\$159.70	\$164.20	\$173.20	\$183.20

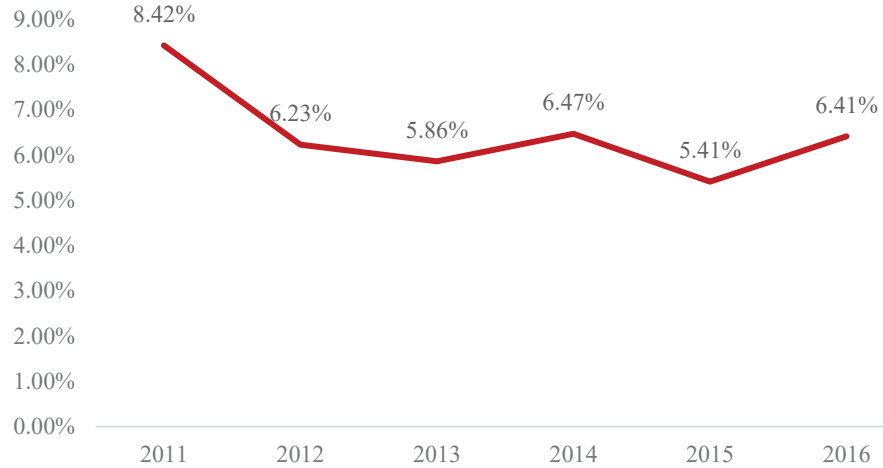
*For current tuition rates and fees go to NOC website, www.noc.edu, and choose the Future Student tab.

Tuition and Fees by Location Out-of-State (per credit hour)*

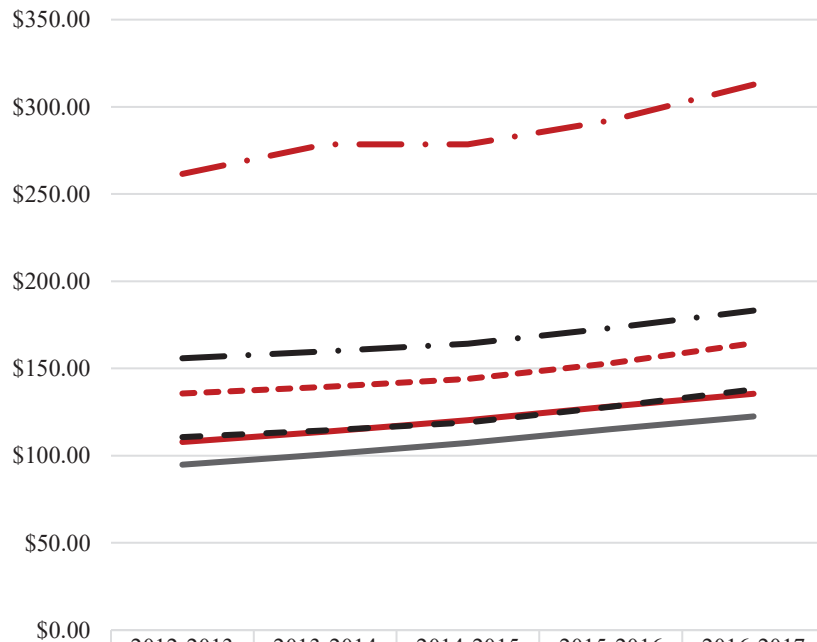
	2012-2013	2013-2014	2014-2015	2015-2016	2016-2017
	Out-of-State	Out-of-State	Out-of-State	Out-of-State	Out-of-State
Tonkawa					
Tuition	\$205.30	\$217.15	\$231.95	\$250.00	\$270.50
Fees	29.20	31.15	33.30	37.15	39.50
Total	\$234.50	\$248.30	\$265.25	\$287.15	\$310.00
Enid					
Tuition	\$205.30	\$217.15	\$231.95	\$250.00	\$270.50
Fees	42.20	44.15	46.30	50.15	52.50
Total	\$247.50	\$261.30	\$278.25	\$300.15	\$323.00
NOC/OSU Gateway					
Tuition	\$205.30	\$217.15	\$231.95	\$250.00	\$270.50
Fees	305.90	319.05	314.55	324.25	513.00
Total	\$511.20	\$536.20	\$546.50	\$574.25	\$783.50
UC – Ponca City					
Tuition	\$205.30	\$217.15	\$231.95	\$250.00	\$270.50
Fees	70.00	70.00	70.00	75.00	81.50
Total	\$275.30	\$287.15	\$301.95	\$325.00	\$352.00
Concurrent & Ed Centers					
Tuition	\$205.30	\$217.15	\$231.95	\$250.00	\$270.50
Fees	45.00	45.00	45.00	50.00	55.00
Total	\$250.30	\$262.15	\$276.95	\$300.00	\$325.50
Internet					
Tuition	\$205.30	\$217.15	\$231.95	\$250.00	\$270.50
Fees	90.20	90.20	90.20	92.50	100.20
Total	\$295.50	\$307.35	\$322.15	\$345.20	\$370.70

*For current tuition rates and fees go to NOC website, www.noc.edu, and choose the Future Student tab.

Percent Change in Tuition



Resident Tuition and Fees by Location (per credit hour)



	2012-2013 Resident	2013-2014 Resident	2014-2015 Resident	2015-2016 Resident	2016-2017 Resident
Tonkawa	\$94.85	\$100.65	\$107.30	\$115.15	\$122.50
Enid	\$107.85	\$113.65	\$120.30	\$128.15	\$135.50
NOC/OSU Gateway	\$261.55	\$278.55	\$278.55	\$292.25	\$312.75
UC	\$135.65	\$139.50	\$144.00	\$153.00	\$164.50
Concurrent	\$110.65	\$114.50	\$119.00	\$128.00	\$138.00
Online	\$155.85	\$159.70	\$164.20	\$173.20	\$183.20

Room and Board by Location per Semester – Private rooms when available have additional costs

	2012-2013	2013-2014	2014-2015	2015-2016	2016-2017
	Double Room	Double Room	Double Room	Double Room	Double Room
Enid					
Lankard					
5-day Meal Plan	\$2,085	\$2,200	\$2,330	\$2,945	\$3,050
7-day Meal Plan			\$2,630	\$3,285	\$3,400
Earl Butts					
5-day Meal Plan	\$2,085	\$2,200	\$2,330	\$2,545	\$2,650
7-day Meal Plan			\$2,630	\$2,885	\$3,000
Elliot Goulter					
5-day Meal Plan	\$2,435	\$2,550	\$2,700	\$2,945	
7-day Meal Plan			\$3,000	\$3,285	
Jets					
5-day Meal Plan				\$3,995	\$4,100
7-day Meal Plan				\$4,334	\$4,450
Tonkawa					
5-day Meal Plan	\$2,045	\$2,150	\$2,300	\$2,500	\$2,650
7-day Meal Plan	\$2,280	\$2,400	\$2,550	\$2,750	\$3,000
Mavericks					
5-day Meal Plan				\$3,950	\$4,100
7-day Meal Plan				\$4,200	\$4,450

Library Services*

Library Statistics

	AY-2014	AY-2015	AY-2016
Visitors to Enid and Tonkawa Libraries	90,000	79,920	90,393
Database Instructions	45	47	41

Electronic Databases for 2014-2015

	AY-2014	AY-2015	AY-2016
Session			
• EbscoHost	4,135	5,511	5,962
• ProQuest	3,936	4,021	4,212
• Gale	2,726	1,301	1,096
Total	10,797	10,833	11,270

Total Full Texts Retrieved			
• EbscoHost	9,831	10,667	10,012
• ProQuest	4,039	2,874	3,202
• Gale	2,759	1,298	1,369
Total	16,629	14,839	14,583

Abstracts Retrieved			
• EbscoHost	14,014	13,840	12,126
• ProQuest	843	420	1,002
• Gale	59	44	52
Total	14,916	14,304	13,180

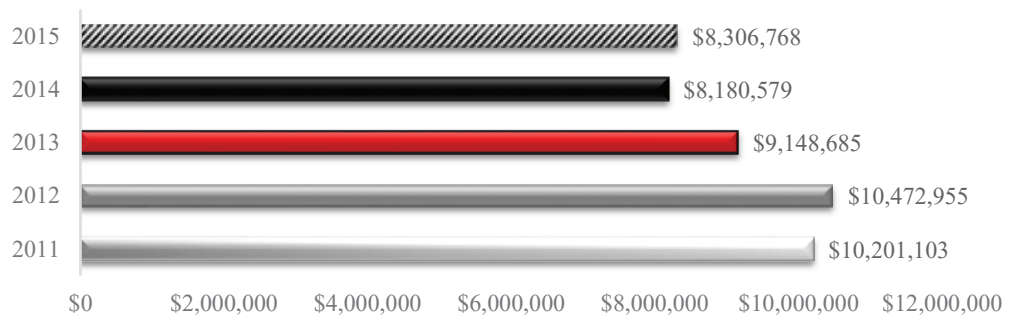
*Data was collected from May of previous year to April of most current year from Library Services

Financial Aid

Financial Aid Profiles

	2011-2012	2012-2013	2013-2014	2014-2015	2015-2016
Total Grant Aid Received	\$10,201,103	\$10,472,955	\$9,148,685	\$8,180,579	\$8,306,768
Number of Students Who Received Pell Grant	1,571	1,421	1,238	1,047	1,079
Percent of First-time, Full-time Students Receiving any Financial Aid	71%	73%	77%	59%	60%

Total Grant Aid Received



Grant Aid

	2011-2012	2012-2013	2013-2014	2014-2015	2015-2016
Full-time, First-time Students	851	720	815	853	872

	2012-2013		2013-2014		2014-2015		2015-2016	
	Dist. of Aid	Avg. Amount Received	Dist. of Aid	Avg. Amount Received	Dist. of Aid	Avg. Amount Received	Dist. of Aid	Avg. Amount Received
Total Students Receiving Grant Aid*	60%	\$4,959	70%	\$5,204	46%	\$4,915	48%	\$4,962
Federal Grant Aid	34%	4,530	41%	4,592	25%	4,708	29%	\$4,720
Pell	33%	4,520	40%	4,444	25%	4,617	28%	\$4,572
Other Federal	6%	776	3%	4,900	2%	3,160	7%	\$1,260
State/Local Grant Aid	26%	1,914	28%	1,793	21%	1,827	21%	\$1,977
Institutional Grant Aid	24%	3762	25%	5,002	16%	4,413	17%	\$3,478

*Full-time, First-time students

Loans

	2012-2013		2013-2014		2014-2015		2015-2016	
	Dist. of Aid	Avg. Amount Received	Dist. of Aid	Avg. Amount Received	Dist. of Aid	Avg. Amount Received	Dist. of Aid	Avg. Amount Received
Total*	32%	\$10,064	33%	\$4,080	23%	\$4,770	25%	\$5,257
Federal	32%	4,757	33%	4,019	23%	4,447	24%	\$4,570
Non-federal	-	5,453	0%	5,087	1%	6,747	3%	\$7,611

*Full-time, First-time students

Average Net Price (out-of-pocket expense) for Students Who Receive Title IV Federal Aid by Income*

	2011-2012	2012-2013	2013-2014	2014-2015	2015-2016
\$0 - 30,000	\$4,898	\$4,791	\$4,882	\$5,905	\$5,225
\$30,001 – 48,000	5,380	5,368	5,475	5,859	6,057
\$48,001 – 75,000	7,592	7,631	7,955	8,477	8,177
\$75,001 – 110,000	8,776	9,409	9,137	10,066	10,505
\$110,001 and more	10,178	10,188	10,053	10,869	10,699

*Full-time, First-time students

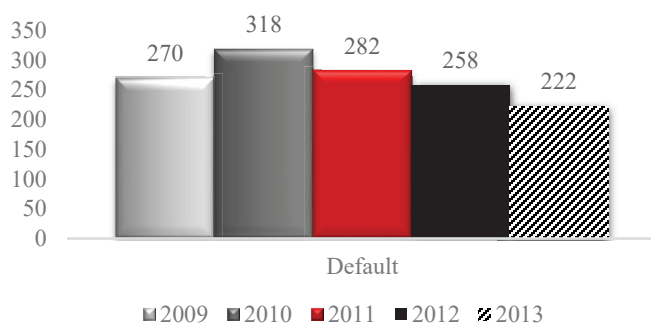
Default Rates

3-Year Cohort Default Rate*	Cohort Yr 2009	Cohort Yr 2010	Cohort Yr 2011	Cohort Yr 2012	Cohort Yr 2013
Default Rate	25.4%	29.4%	24.1%	18.9%	16.3%
Students in Default	270	318	282	258	222
Students in Repay	1,059	1,079	1,170	1,361	1,360

*Data updated on September 26, 2016, from Federal Student Aid – Default Management website,

<http://ifap.ed.gov/DefaultManagement/finalcdrg.html>

Number of Students in 3-Year Default





Faculty/Staff

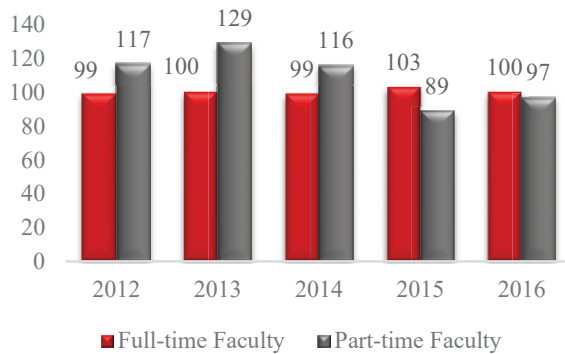


Faculty/Staff

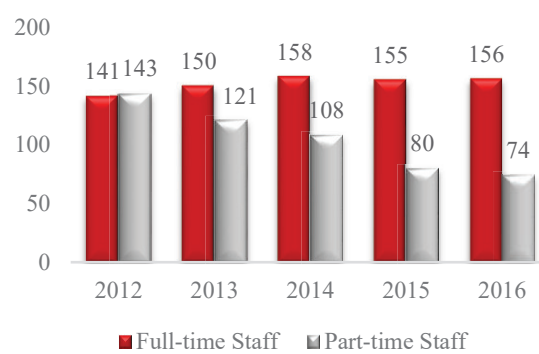
Profiles

	AY-2012	AY-2013	AY-2014	AY-2015	AY-2016
Full-time Faculty	99	100	99	103	100
Part-time Faculty	117	129	116	89	97
Full-time Staff	141	150	158	155	156
Part-time Staff	143	121	108	80	74
Student-Faculty Ratio	17:1	17:1	17:1	17:1	17:1

Number of Faculty



Number of Staff



Faculty/Staff Demographics*

Full-time Faculty

	AY-2011	AY-2013	AY-2015	AY-2016
Men	39	42	47	43
Women	55	58	56	57
Total	94	100	103	100
American Indian or Alaska Native	6	0	0	1
Asian	0	0	0	0
Black or African American	0	1	4	2
Hispanic/Latino	0	0	0	0
White	61	99	99	97
Two or more races	27	0	0	0
Unknown	0	0	0	0

*Demographics had not been accurately collected to this point, and IPEDS did not report demographics in 2012, 2014.

Full-time Staff

	AY-2011	AY-2013	AY-2015	AY-2016
Men	50	53	58	62
Women	86	97	97	94
Total	136	150	155	156
American Indian or Alaska Native	4	1	4	4
Asian	1	0	0	0
Black or African American	3	5	1	4
Hispanic/Latino	2	2	3	6
White	126	141	146	142
Two or more races	0	0	1	0
Unknown	0	1	0	0

*IPEDS did not report demographics in 2012, 2014

Part-time Faculty

	AY-2011	AY-2013	AY-2015	AY-2016
Men	77	53	35	46
Women	93	76	54	51
Total	170	129	89	97
American Indian or Alaska Native	7	0	0	0
Asian	0	0	0	0
Black or African American	0	0	0	0
Hispanic/Latino	4	0	0	0
White	159	129	89	97
Two or more races	0	0	0	0

*IPEDS did not report demographics in 2012, 2014

Part-time Staff

	AY-2011	AY-2013	AY-2015	AY-2016
Men	61	56	27	45
Women	78	65	53	29
Total	139	121	80	74
American Indian or Alaska Native	5	0	0	0
Asian	1	0	0	0
Black or African American	1	0	0	0
Hispanic/Latino	11	0	0	0
White	121	96	80	74
Two or more races	0	25	0	0

*IPEDS did not report demographics in 2012, 2014



NORTHERN
Oklahoma College
TONKAWA | ENID | STILLWATER

Finances



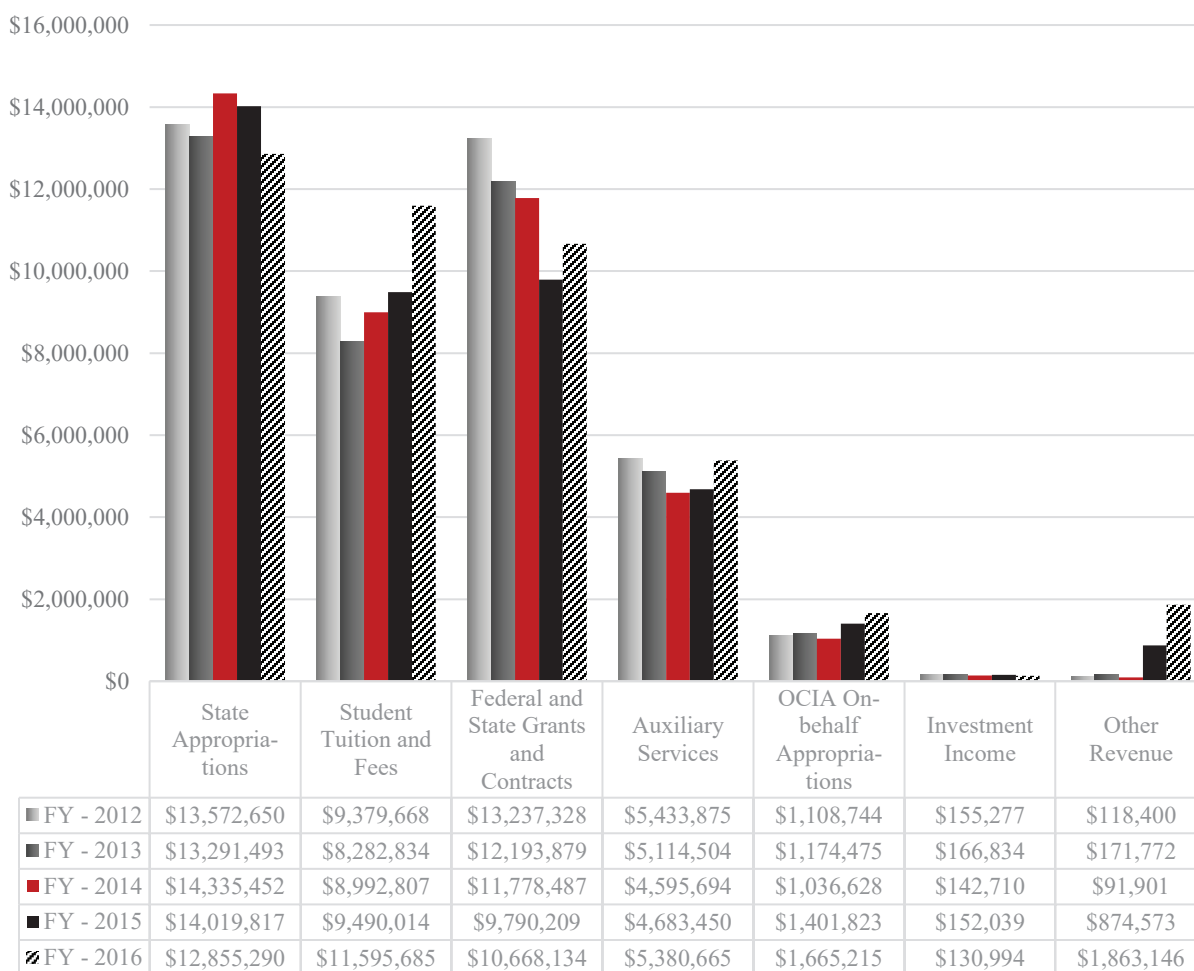
Finances

Core Revenues* – FY – 2016

	Total	Percent
State Appropriations	\$12,855,290	29%
Student Tuition and Fees (net of scholarship allowances)	11,595,685	27%
Federal and State Grants and Contracts	10,668,134	24%
Auxiliary Services	5,380,665	12%
OCIA On-behalf Appropriations	1,665,215	4%
Investment Income	130,994	0%
Other Revenues	1,863,146	4%
Total Revenue	\$44,159,129	

*For Fiscal Year ending on June 30, 2016. Data obtained from Office of Financial Affairs

Core Revenues

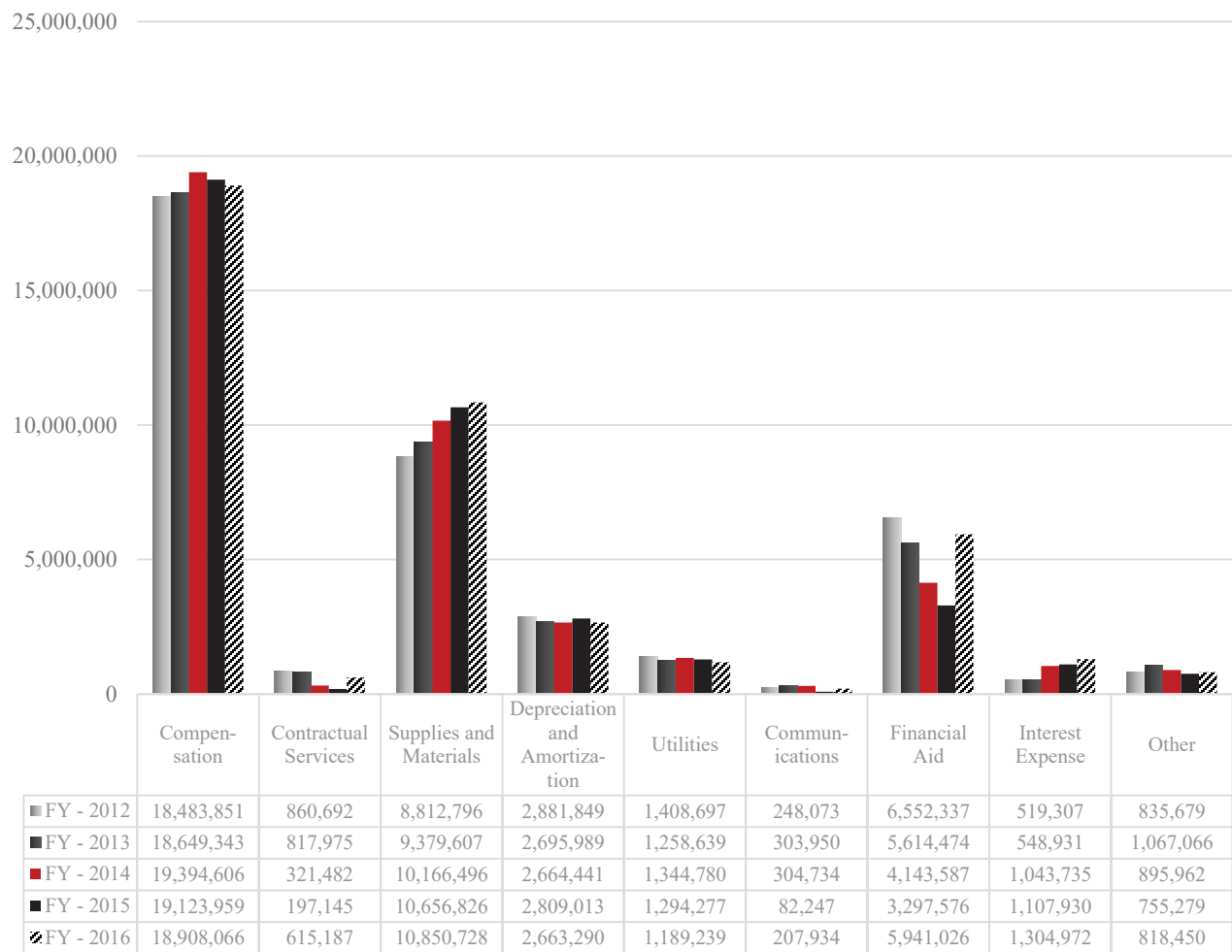


Core Expenses*– FY – 2016

	Total	Percent
Compensation	\$18,908,066	45%
Contractual Services	615,187	1%
Supplies and Materials	10,850,728	26%
Depreciation and Amortization	2,663,290	6%
Utilities	1,189,239	3%
Communications	207,934	0%
Financial Aid	5,941,026	14%
Interest Expense	1,304,972	3%
Other	818,450	2%
Total Expense	\$42,498,892	

*For Fiscal Year ending on June 30, 2016. Data was obtained from Office of Financial Affairs

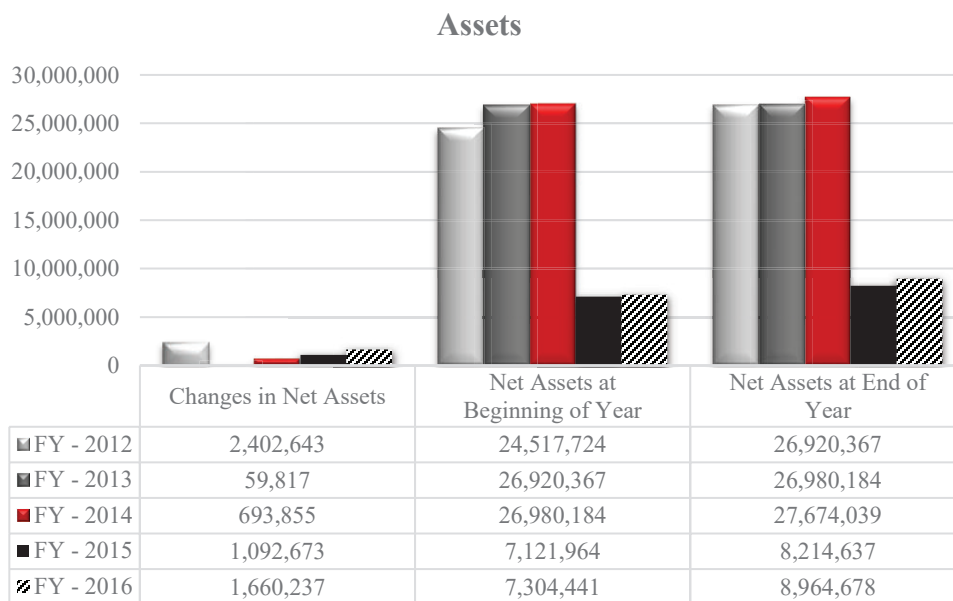
Core Expenses



Assets – FY – 2016*

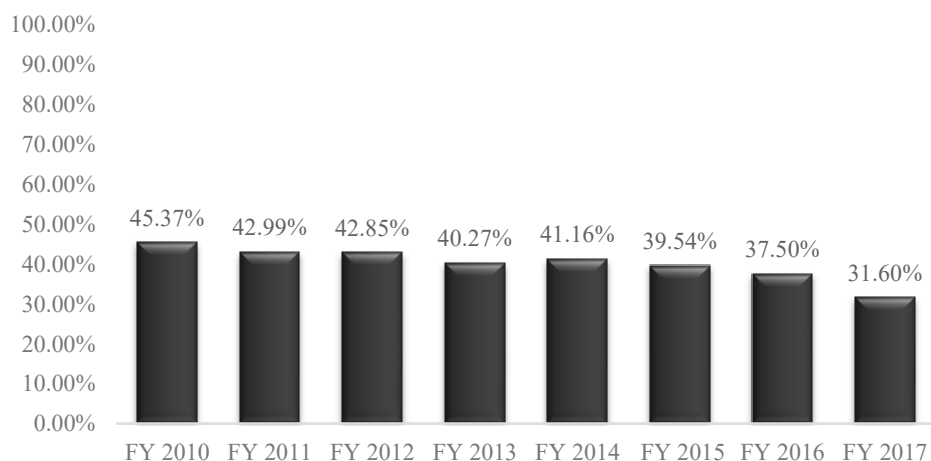
Changes in Net Assets	\$1,660,237
Net Assets at Beginning of Year	\$7,304,441
Net Assets at End of Year	\$8,964,678

*For Fiscal Year ending on June 30, 2016. Data was obtained from Office of Financial Affairs



Adjustment to net position for adoption of GASB68 Pension Obligation in FY 2015 & 2016.

Percentage of Revenue from State Appropriations





NORTHERN
Oklahoma College
TONKAWA | ENID | STILLWATER

Campus Safety



Campus Safety and Security*

Criminal Offenses

	2012-2013		2013-2014		2014-2015		2015-2016	
	Tonkawa	Enid	Tonkawa	Enid	Tonkawa	Enid	Tonkawa	Enid
On Campus								
Murder	0	0	0	0	0	0	0	0
Negligent Manslaughter					0	0	0	0
Sex Offenses – Forcible	0	0	0	0	0	0	0	0
Rape					0	0	0	0
Fondling					0	0	0	0
Sex Offenses – Non-forcible					0	0	0	0
Incest					0	0	0	0
Statutory Rape					0	0	0	0
Robbery	0	0	0	0	0	0	0	0
Aggravated Assault	0	0	0	0	0	0	0	0
Burglary	0	0	0	0	0	0	0	0
Motor Vehicle Theft	0	0	0	0	0	0	0	0
Arson	0	0	0	0	0	0	0	0
On-Campus – Student Housing								
Murder	0	0	0	0	0	0	0	0
Negligent Manslaughter					0	0	0	0
Sex Offenses – Forcible	0	0	0	0	0	0	0	0
Rape					0	0	0	0
Fondling					0	0	0	0
Sex Offenses – Non-forcible					0	0	0	0
Incest					0	0	0	0
Statutory Rape					0	0	0	0
Robbery	0	0	0	0	0	0	0	0
Aggravated Assault	0	0	0	0	0	0	0	0
Burglary	0	0	0	0	0	0	0	0
Motor Vehicle Theft	0	0	0	0	0	0	0	0
Arson	0	0	0	0	0	0	0	0

Disciplinary Actions

	2012-2013		2013-2014		2014-2015		2015-2016	
	Tonkawa	Enid	Tonkawa	Enid	Tonkawa	Enid	Tonkawa	Enid
On Campus								
Weapons: Carrying, Possessing, etc.	1	0	0	0	0	0	0	0
Drug Abuse Violations	1	0	3	0	0	2	3	0
Liquor Law Violations	26	21	25	14	37	32	12	26
On-Campus – Student Housing								
Weapons: Carrying, Possessing, etc.	0	0	0	0	0	0	0	0
Drug Abuse Violations	1	0	3	0	0	2	3	0
Liquor Law Violations	26	21	25	14	37	32	12	26

Hate Crimes

	2012-2013		2013-2014		2014-2015		2015-2016	
	Tonkawa	Enid	Tonkawa	Enid	Tonkawa	Enid	Tonkawa	Enid
On Campus								
Murder	0	0	0	0	0	0	0	0
Sex Offenses	0	0	0	0	0	0	0	0
Robbery	0	0	0	0	0	0	0	0
Aggravated Assault	0	0	0	0	0	0	0	0
Burglary	0	0	0	0	0	0	0	0
Motor Vehicle Theft	0	0	0	0	0	0	0	0
Arson	0	0	0	0	0	0	0	0
Simple Assault	0	0	0	0	0	0	0	0
Larceny-theft	0	0	0	0	0	0	0	0
Intimidation	0	0	0	0	0	0	0	0
Destruction/damage/vandalism	0	0	0	0	0	0	0	0
On-Campus – Student Housing								
Murder	0	0	0	0	0	0	0	0
Sex Offenses	0	0	0	0	0	0	0	0
Robbery	0	0	0	0	0	0	0	0
Aggravated Assault	0	0	0	0	0	0	0	0
Burglary	0	0	0	0	0	0	0	0
Motor Vehicle Theft	0	0	0	0	0	0	0	0
Arson	0	0	0	0	0	0	0	0
Simple Assault	0	0	0	0	0	0	0	0
Larceny-theft	0	0	0	0	0	0	0	0
Intimidation	0	0	0	0	0	0	0	0
Destruction/damage/vandalism	0	0	0	0	0	0	0	0

Arrests

	2012-2013		2013-2014		2014-2015		2015-2016	
	Tonkawa	Enid	Tonkawa	Enid	Tonkawa	Enid	Tonkawa	Enid
On Campus								
Weapons: Carrying, Possessing, etc.	0	0	0	0	0	0	0	0
Drug Abuse Violations	1	0	0	0	0	0	0	0
Liquor Law Violations	2	0	0	0	0	0	0	0
On-Campus - Student Housing								
Weapons: Carrying, Possessing, etc.	0	0	0	0	0	0	0	0
Drug Abuse Violations	1	0	0	0	0	0	0	0
Liquor Law Violations	0	0	0	0	0	0	0	0

Fire Statistics

	2012-2013	2013-2014	2014-2015	2015-2016
	Tonkawa	Tonkawa	Tonkawa	Tonkawa
Fires				
Threlkeld Hall	0	0	0	0
Bell Hall	0	0	0	0
Easterling Hall	0	0	0	0
Boehme Hall	0	0	0	0
Markley Hall	0	0	0	0
Bush Hall	0	0	0	0
Injuries				
Threlkeld Hall	0	0	0	0
Bell Hall	0	0	0	0
Easterling Hall	0	0	0	0
Boehme Hall	0	0	0	0
Markley Hall	0	0	0	0
Bush Hall	0	0	0	0
Deaths				
Threlkeld Hall	0	0	0	0
Bell Hall	0	0	0	0
Easterling Hall	0	0	0	0
Boehme Hall	0	0	0	0
Markley Hall	0	0	0	0
Bush Hall	0	0	0	0

	2012-2013	2013-2014	2014-2015	2015-2016
	Enid	Enid	Enid	Enid
Fires				
Earl Butts Hall	0	0	0	0
Elliot-Goulter Hall	0	0	0	0
Lankard Hall	0	0	0	0
Injuries				
Earl Butts Hall	0	0	0	0
Elliot-Goulter Hall	0	0	0	0
Lankard Hall	0	0	0	0
Deaths				
Earl Butts Hall	0	0	0	0
Elliot-Goulter Hall	0	0	0	0
Lankard Hall	0	0	0	0

*Information obtained from <http://ope.ed.gov/campussafety/#/> as submitted in Clery Report by NOC updated in October for previous year.



NORTHERN
Oklahoma College
TONKAWA | ENID | STILLWATER

NOC Location Information



NOC Location Information

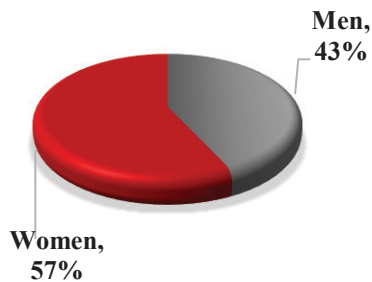
Tonkawa

Data collected from Student Information Systems for the fall semester of the year reported. Data includes only information for students physically located on site (excludes online and high school sites if reported separately).

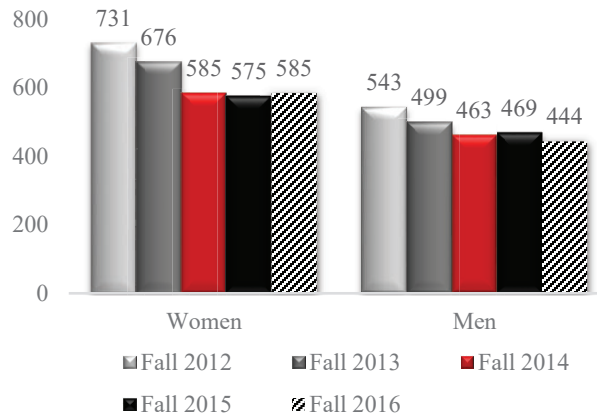
Student Gender - Tonkawa

	Fall 2012	Fall 2013	Fall 2014	Fall 2015	Fall 2016
Men Full-time	423	406	315	370	344
Men Part-time	120	93	148	99	100
Total	543	499	463	469	444
Women Full-time	543	512	341	412	408
Women Part-time	188	164	244	163	177
Total	731	676	585	575	585

**Student Gender Fall
2016 - Tonkawa**



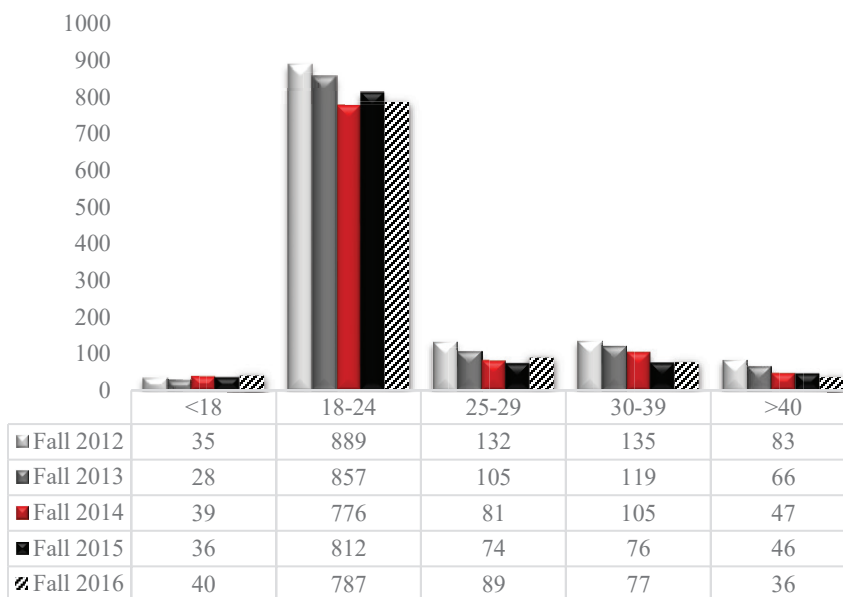
Student Gender - Tonkawa



Student Age - Tonkawa

	Men					Women				
	Fall 2012	Fall 2013	Fall 2014	Fall 2015	Fall 2016	Fall 2012	Fall 2013	Fall 2014	Fall 2015	Fall 2016
<18	11	10	15	11	15	24	18	24	25	25
18-24	419	407	376	391	368	470	450	400	421	419
25-29	46	28	28	35	34	86	77	53	39	55
30-39	41	36	31	18	18	94	83	74	58	59
>40	26	18	13	14	9	57	48	34	32	27
Total	543	499	463	469	444	731	676	585	575	585

Student Age Distribution - Tonkawa



Student Race/Ethnicity - Tonkawa

	Fall 2012	Fall 2013	Fall 2014	Fall 2015	Fall 2016
American Indian or Alaska Native	203	168	155	159	162
Asian	7	4	7	7	7
Black or African American	41	30	35	53	47
Native Hawaiian or other Pacific Islander	-	-	-	3	2
Hispanic/Latino	77	74	53	80	88
White	927	883	753	706	673
Unknown	2	2	26	0	6
Non-resident/Alien	17	14	19	20	28
2 or more	-	-	-	16	16

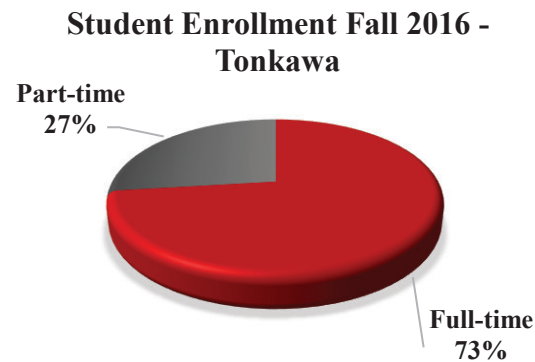
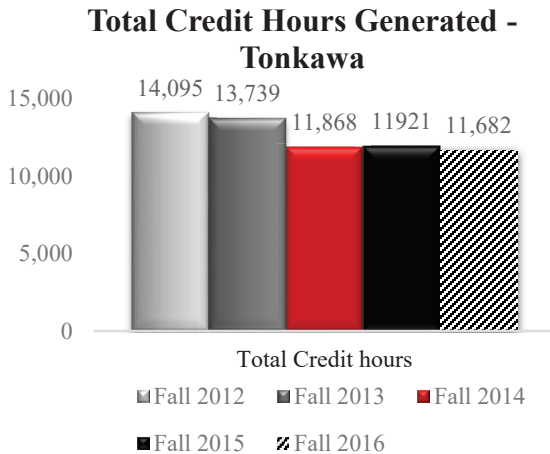
Student Enrollment - Tonkawa

	Fall 2012	Fall 2013	Fall 2014	Fall 2015	Fall 2016
Full-time Students	966	918	656	782	752
Part-time Students	308	257	392	262	277
Total Enrollment	1,274	1,175	1,048	1,044	1029

Courses – Tonkawa*

	Fall 2012	Fall 2013	Fall 2014	Fall 2015	Fall 2016
Total Course Section Offerings	301	289	277	276	272
Total Credit Hours Generated	14,095	13,739	11,868	11,921	11,682

*Fall only



Degrees Awarded - Tonkawa

	AY-2014	AY-2015	AY-2016
Total Graduates	370	369	303
Agriculture, Science, and Engineering	83	69	73
Business	59	67	46
Fine Arts	16	17	13
Health, Physical Ed, and Recreation	10	18	15
Language Arts	32	36	21
Math	3	3	4
Nursing	61	48	58
Social Science	60	75	52
Arts and Sciences	72	64	47
Total Degrees Awarded	402	397	329

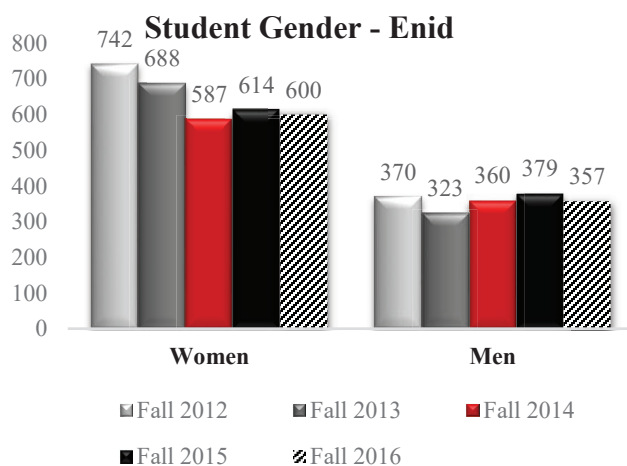
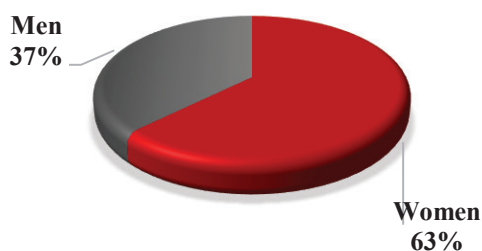
Enid

Data collected from Student Information Systems for the fall semester of the year reported. Data includes only information for students physically located on site (excludes online and high school sites if reported separately).

Student Gender - Enid

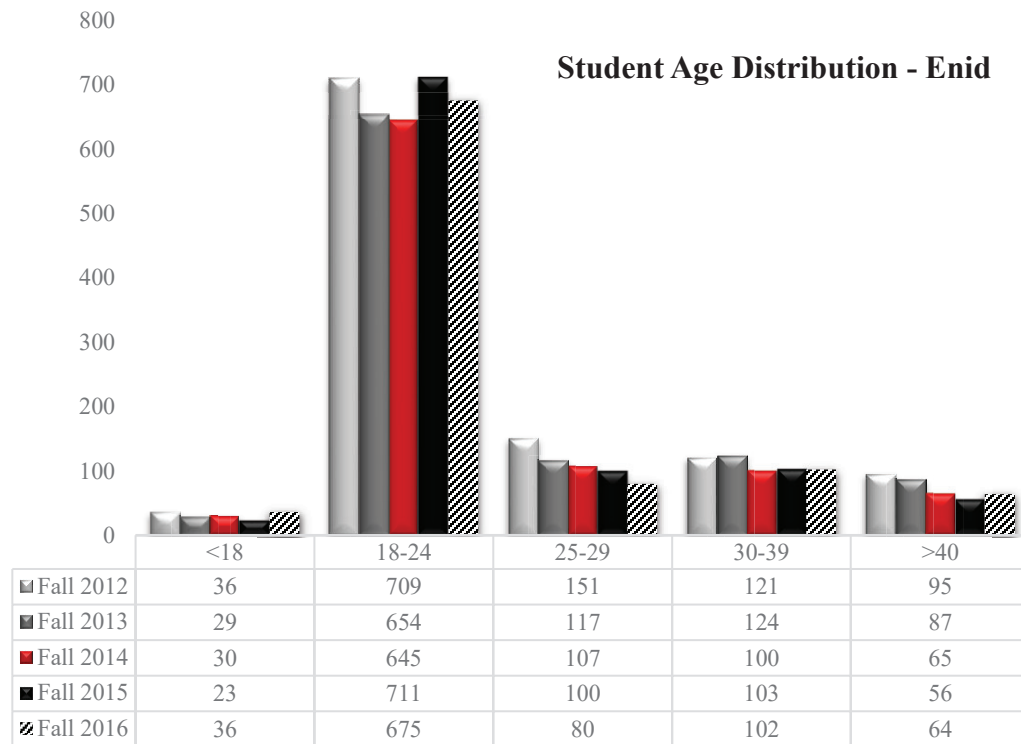
	Fall 2012	Fall 2013	Fall 2014	Fall 2015	Fall 2016
Men Full-time	257	243	205	274	251
Men Part-time	113	80	155	105	106
Total	370	323	360	379	357
Women Full-time	432	384	274	357	352
Women Part-time	310	304	313	257	248
Total	742	688	587	614	600

Student Gender Fall 2016 - Enid



Student Age - Enid

	Men					Women				
	Fall 2012	Fall 2013	Fall 2014	Fall 2015	Fall 2016	Fall 2012	Fall 2013	Fall 2014	Fall 2015	Fall 2016
<18	11	8	13	11	13	25	21	17	12	23
18-24	276	248	279	308	286	433	406	366	403	389
25-29	38	23	26	28	22	113	94	81	72	58
30-39	27	27	27	25	24	94	97	73	78	78
>40	18	17	15	7	12	77	70	50	49	52
Total	370	323	360	379	357	742	688	587	614	600



Student Race/Ethnicity - Enid

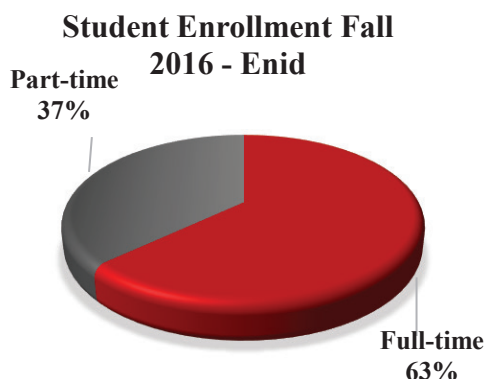
	Fall 2012	Fall 2013	Fall 2014	Fall 2015	Fall 2016
American Indian or Alaska Native	55	60	72	78	62
Asian	19	14	16	9	9
Black or African American	58	53	46	44	53
Native Hawaiian or other Pacific Islander	-	-	-	14	10
Hispanic/Latino	83	90	98	129	122
White	888	790	691	703	662
Unknown	4	0	18	0	7
Non-resident/Alien	5	4	6	10	18
Two or more	-	-	-	6	14

Student Enrollment - Enid

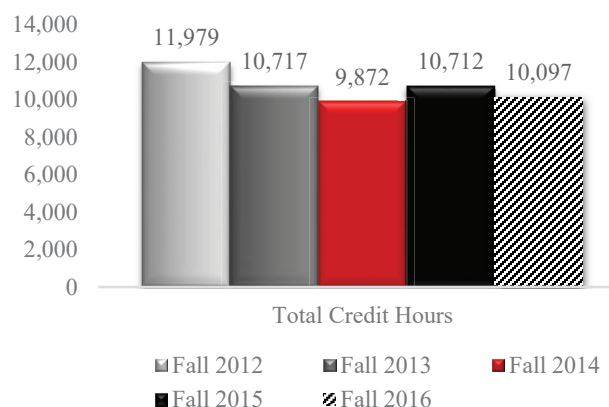
	Fall 2012	Fall 2013	Fall 2014	Fall 2015	Fall 2016
Full-time Students	689	627	479	631	603
Part-time Students	423	384	468	362	354
Total Enrollment	1,112	1,011	948	993	957

Courses - Enid

	Fall 2012	Fall 2013	Fall 2014	Fall 2015	Fall 2016
Total Course Section Offerings	214	197	201	200	194
Total Credit Hours Generated	11,797	10,717	9,872	10,712	10,097



Total Credit Hours Generated - Enid



Degrees Awarded – Enid

	AY-2014	AY-2015	AY-2016
Total Graduates	214	138	290
Agriculture, Science, and Engineering	19	14	38
Business	32	26	62
Fine Arts	2	0	0
Health, Physical Ed, and Recreation	24	6	7
Language Arts	19	16	26
Math	3	3	15
Nursing	60	39	81
Social Science	40	30	35
Arts and Sciences	41	19	56
Other	1	0	0
Total Degrees Awarded	241	153	320

Stillwater

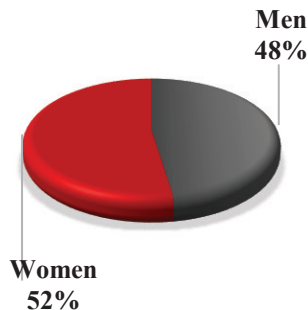
Data collected from Student Information Systems for the fall semester of the year reported. Data includes only information for students on site (excludes online and high school sites if reported separately).

Student Gender - Stillwater

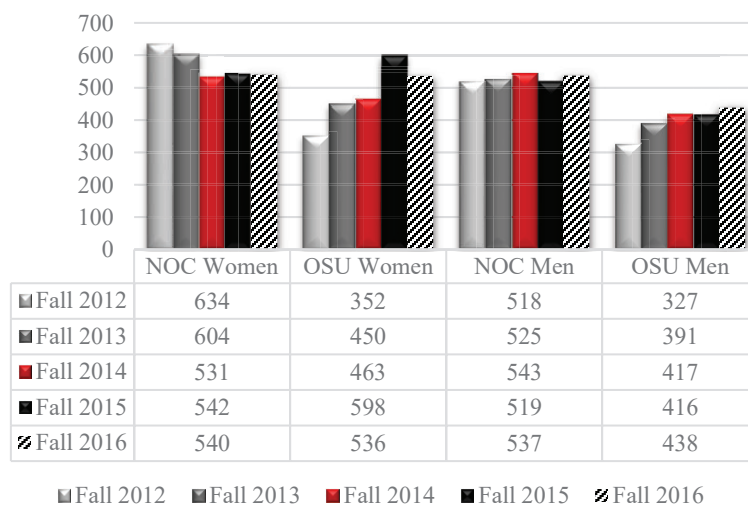
	Fall 2012*	Fall 2013	Fall 2014*	Fall 2015*	Fall 2016*
Men Full-time					
• NOC	370	335	244	330	355
Total	370	335	244	330	355
Men Part-time					
• NOC	148	190	299	189	182
• OSU	327	391	417	416	438
Total	475	581	716	605	620
Total Men	844	916	960	935	975
Women Full-time					
• NOC	368	346	209	310	318
Total	368	346	209	310	318
Women Part-time					
• NOC	266	258	322	232	222
• OSU	352	450	463	598	536
Total	618	708	785	830	758
Total Women	984	1,054	994	1,140	1076

*Several students were coded as both NOC and OSU.

Student Gender Fall 2016 - Stillwater



Student Gender - Stillwater



Student Age - Stillwater

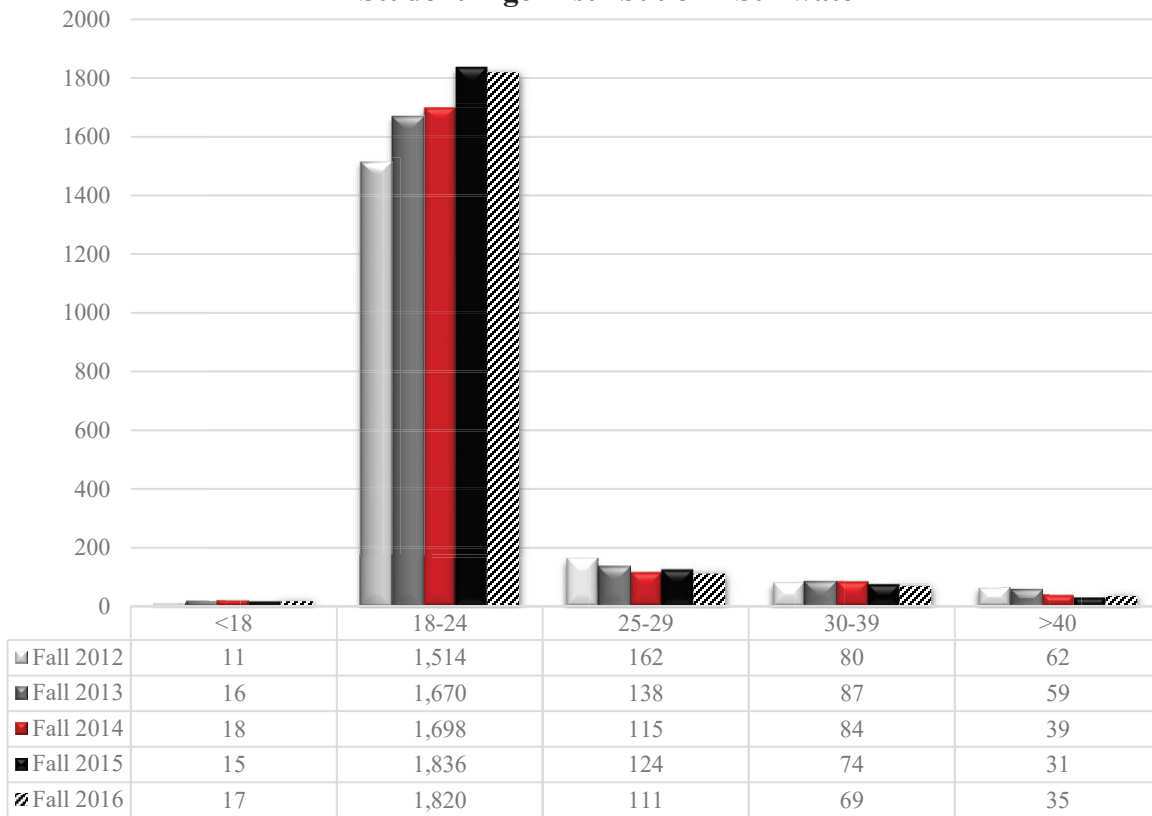
Women	Fall 2012*	Fall 2013	Fall 2014*	Fall 2015	Fall 2016*
<18					
• NOC	8	9	12	7	10
• OSU	1	0	1	2	2
Total	9	9	13	9	12
18-24					
• NOC	447	444	389	418	410
• OSU	334	433	454	586	525
Total	781	877	843	1,004	935
25-29					
• NOC	90	55	48	47	51
• OSU	9	8	2	8	4
Total	99	63	50	55	55
30-39					
• NOC	46	60	56	48	45
• OSU	4	3	3	4	4
Total	50	63	59	52	49
>40					
• NOC	43	36	25	23	24
• OSU	4	6	4	1	1
Total	47	42	29	24	25
Total	984	1,054	994	1,144	1076

*Several students were coded as both NOC and OSU.

Men	Fall 2012*	Fall 2013	Fall 2014*	Fall 2015	Fall 2016
<18					
• NOC	1	5	5	5	5
• OSU	1	2	0	1	0
Total	2	7	5	6	5
18-24					
• NOC	431	435	466	441	464
• OSU	302	358	389	391	421
Total	733	793	855	832	885
25-29					
• NOC	51	53	46	49	44
• OSU	12	22	19	20	12
Total	63	75	65	69	56
30-39					
• NOC	24	17	18	20	16
• OSU	8	7	7	2	4
Total	32	24	25	22	20
>40					
• NOC	11	15	8	4	7
• OSU	4	2	2	3	3
Total	15	17	10	7	10
Total	844	916	960	936	976

*Several students were coded as both NOC and OSU.

Student Age Distribution - Stillwater



Student Race/Ethnicity - Stillwater

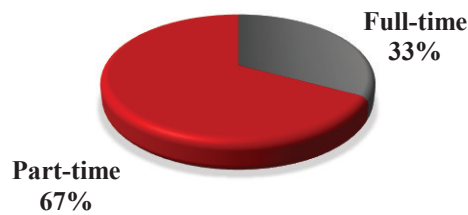
	Fall 2012	Fall 2013	Fall 2014	Fall 2015	Fall 2016
American Indian or Alaska Native	203	190	258	267	496
Asian	31	24	36	27	21
Black or African American	160	164	159	200	125
Native Hawaiian or other Pacific Islander	-	-	-	7	3
Hispanic/Latino	57	88	74	113	96
White	1,338	1,456	1,273	1,274	978
Unknown	22	27	92	3	8
Non-resident/Alien	17	21	65	150	111
Two or more	-	-	-	34	210

Student Enrollment - Stillwater

	Fall 2012*	Fall 2013	Fall 2014*	Fall 2015	Fall 2016*
Full-time Students					
• NOC	738	681	453	640	672
• OSU	10	3	5	0	2
Total	747	684	458	640	674
Part-time Students					
• NOC	414	448	621	421	404
• OSU	669	838	880	1,014	974
Total	1,081	1,286	1,501	1,435	1,378
Total Enrollment	1,828	1,970	1,959	2,075	2,052

*Several students were coded as both NOC and OSU.

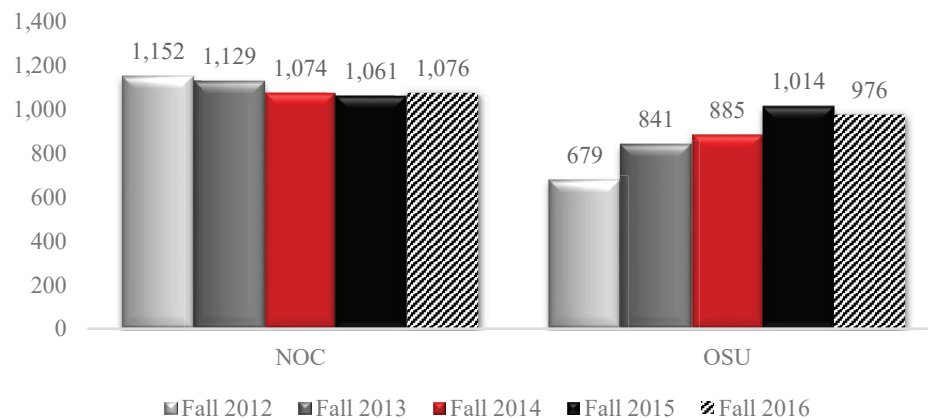
**Student Enrollment Fall
2016 - Stillwater**



**Student Enrollment Fall
2016 - NOC/OSU**



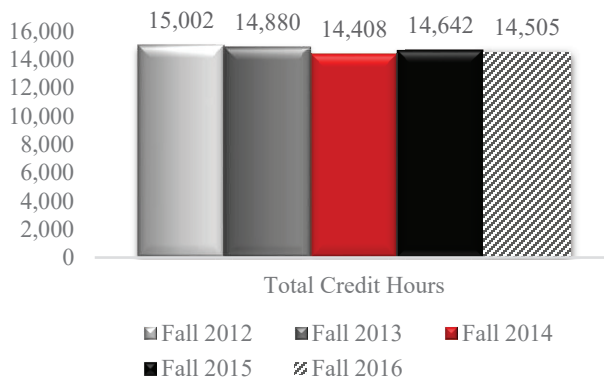
Student Enrollment - Stillwater



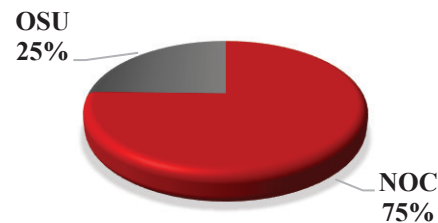
Courses - Stillwater

	Fall 2012	Fall 2013	Fall 2014	Fall 2015	Fall 2016
Total Course Section Offerings	220	204	346	217	220
Total Credit Hours Generated	15,002	14,880	14,408	14,642	14,505
• NOC	12,278	11,739	11,181	11,041	10,938
• OSU	2,724	3,141	3,227	3,601	3,567

Total Credit Hours Generated - Stillwater



Total Credit Hours Generated Fall 2016 - NOC/OSU



Graduate Location – Stillwater

	AY-2014	AY-2015	AY-2016
NOC Gateway Graduates	67	33	92
NOC Fountain Square Graduates	28	30	43
Total	95	63	135

Degrees Awarded - Stillwater

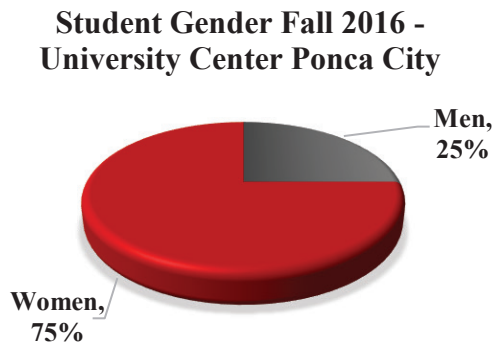
	AY-2014	AY-2015	AY-2016
Nursing	28	35	46
Child Development	6	3	4
Social Science	19	12	21
Business	15	13	34
Arts and Sciences	33	14	37
Other Degrees	4	2	8
Total Degrees Awarded	105	79	150

University Center Ponca City

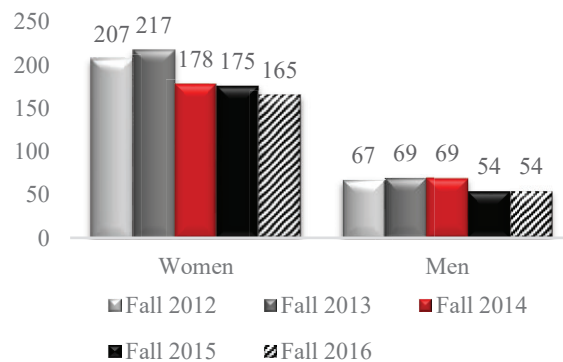
Data collected from Student Information Systems for the fall semester of the year reported. Data includes only information for students physically located at University Center (excludes online and high school sites if reported separately).

Student Gender – University Center Ponca City

	Fall 2012	Fall 2013	Fall 2014	Fall 2015	Fall 2016
Men Full-time	33	26	13	19	16
Men Part-time	34	43	56	35	38
Total	67	69	69	54	54
Women Full-time	94	95	46	52	64
Women Part-time	113	122	132	123	101
Total	207	217	178	175	165



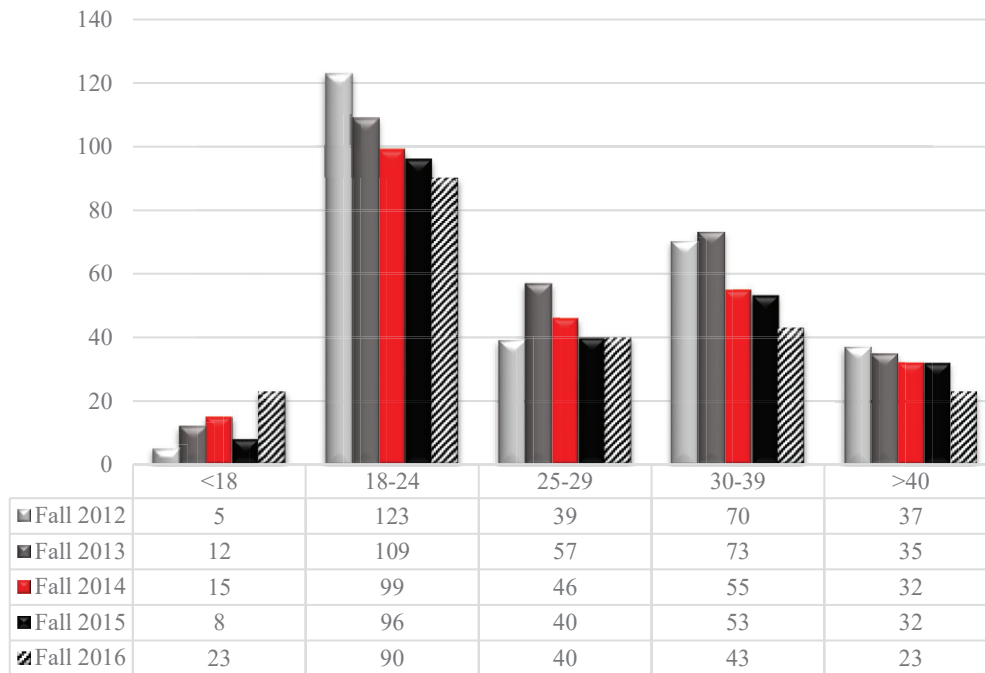
Student Gender - University Center Ponca City



Student Age – University Center Ponca City

	Fall 2012	Fall 2013	Fall 2014	Fall 2015	Fall 2016
<18	5	12	15	8	23
18-24	123	109	99	96	90
25-29	39	57	46	40	40
30-39	70	73	55	53	43
>40	37	35	32	32	23
Total	274	286	247	229	219

Student Age Distribution - University Center Ponca City



Student Race/Ethnicity – University Center Ponca City

	Fall 2012	Fall 2013	Fall 2014	Fall 2015	Fall 2016
American Indian or Alaska Native	50	40	36	37	45
Asian	0	1	3	4	2
Black or African American	10	13	8	7	7
Native Hawaiian or other Pacific Islander	-	-	-	0	0
Hispanic/Latino	15	12	13	13	13
White	199	220	185	168	145
Unknown	0	0	1	0	4
Non-resident/Alien	0	0	1	0	0
2 or more	-	-	-	0	3

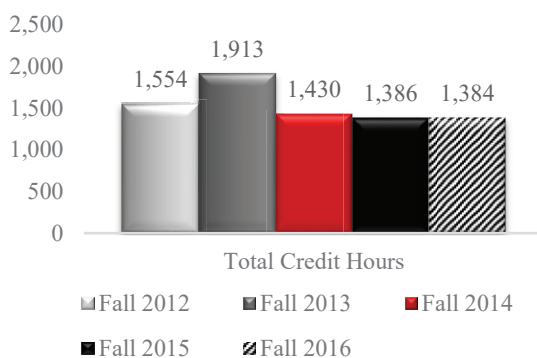
Student Enrollment – University Center Ponca City

	Fall 2012	Fall 2013	Fall 2014	Fall 2015	Fall 2016
Full-time Students	127	121	59	71	80
Part-time Students	147	165	188	158	139
Total Enrollment	274	286	247	229	219

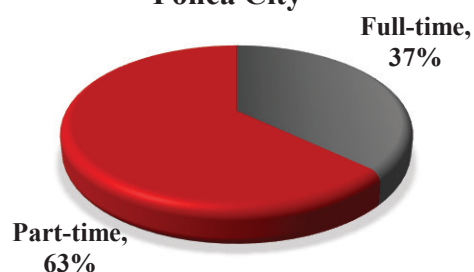
Courses – University Center Ponca City

	Fall 2012	Fall 2013	Fall 2014	Fall 2015	Fall 2016
Total Course Section Offerings	68	85	71	69	68
Total Credit Hours Generated	1,554	1,913	1,430	1,386	1,384

**Total Credit Hours Generated -
University Center Ponca City**



**Student Enrollment Fall
2016 - University Center
Ponca City**

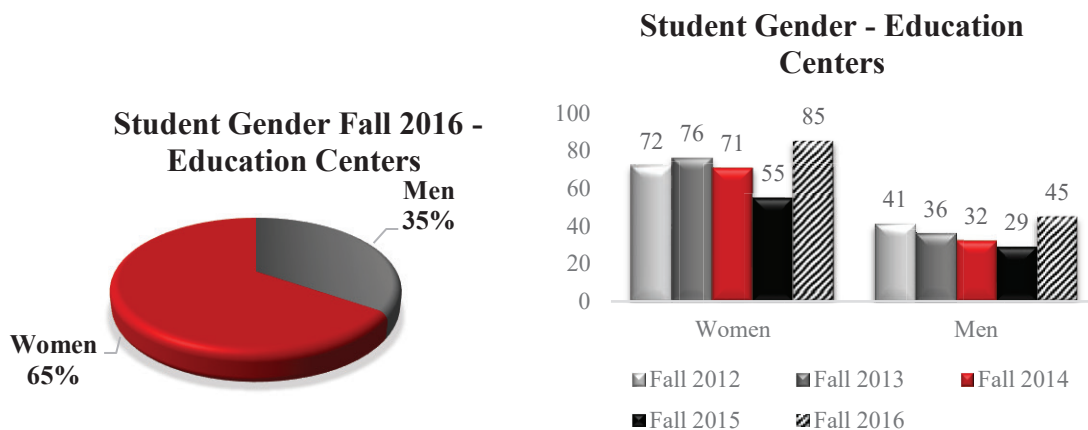


Education Centers

Data collected from Student Information Systems for the fall semester of the year reported. Data includes only information for students physically located at Enid University Center or high school sites different from Tonkawa, Enid, Stillwater, and University Center Ponca City locations.

Student Gender – Education Centers

	Fall 2012	Fall 2013	Fall 2014	Fall 2015	Fall 2016
Men Full-time	1	0	0	0	0
Men Part-time	40	36	32	29	45
Total	41	36	32	29	45
Women Full-time	0	2	0	0	0
Women Part-time	72	74	71	55	85
Total	72	76	71	55	85



Student Age – Education Centers

	Fall 2012	Fall 2013	Fall 2014	Fall 2015	Fall 2016
<18	65	63	59	52	77
18-24	48	49	44	31	53
25-29	0	0	0	1	0
30-39	0	0	0	0	0
>40	0	0	0	0	0
Total	113	112	103	84	130

Student Race/Ethnicity – Education Centers

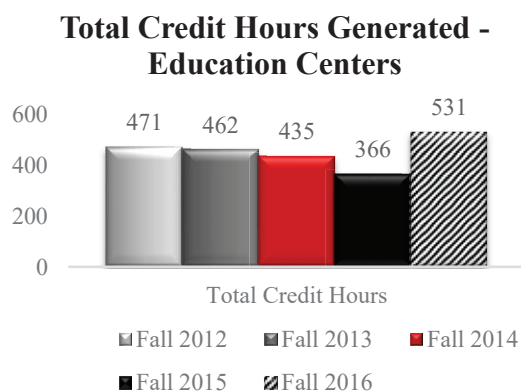
	Fall 2012	Fall 2013	Fall 2014	Fall 2015	Fall 2016
American Indian or Alaska Native	5	4	5	9	9
Asian	2	1	2	0	5
Black or African American	1	1	1	6	4
Native Hawaiian or other Pacific Islander	-	-	-	2	3
Hispanic/Latino	7	4	9	5	9
White	97	102	83	60	99
Unknown	1	0	3	0	1
Non-resident/Alien	0	0	1	0	0
2 or more	-	-	-	2	0

Student Enrollment – Education Centers

	Fall 2012	Fall 2013	Fall 2014	Fall 2015	Fall 2016
Full-time Students	1	2	0	0	0
Part-time Students	112	110	103	84	130
Total Enrollment	113	112	103	84	130

Courses – Education Centers

	Fall 2012	Fall 2013	Fall 2014	Fall 2015	Fall 2016
Total Course Section Offerings	25	24	21	17	23
Total Credit Hours Generated	471	462	435	366	531



Enid University Center*

	Fall 2012	Fall 2013	Fall 2014	Fall 2015	Fall 2016
Number of Students	60	62	60	43	53
Number of Seats	95	91	93	69	64
Total Credit Hours Generated	276	273	279	207	192

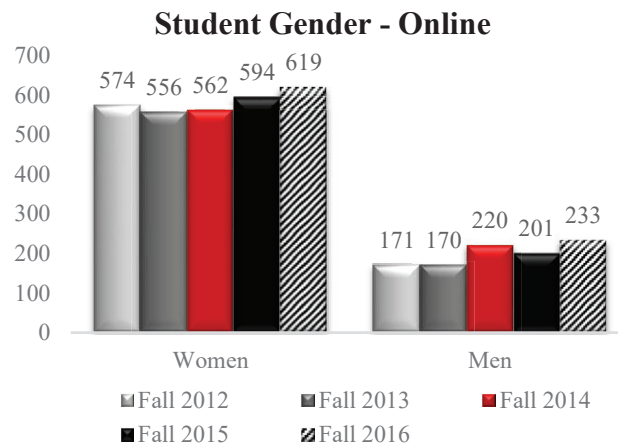
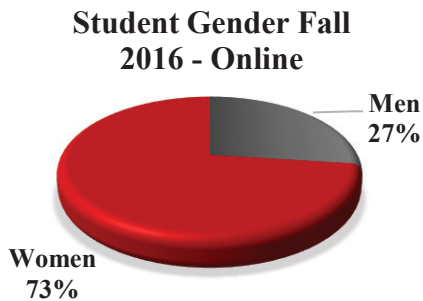
*Enid University Center is part of the Enid Public School System

Online

Data collected from Student Information Systems for the fall semester of the year reported. Data includes information on students taking online courses. Students may be taking classes other than online.

Student Gender - Online

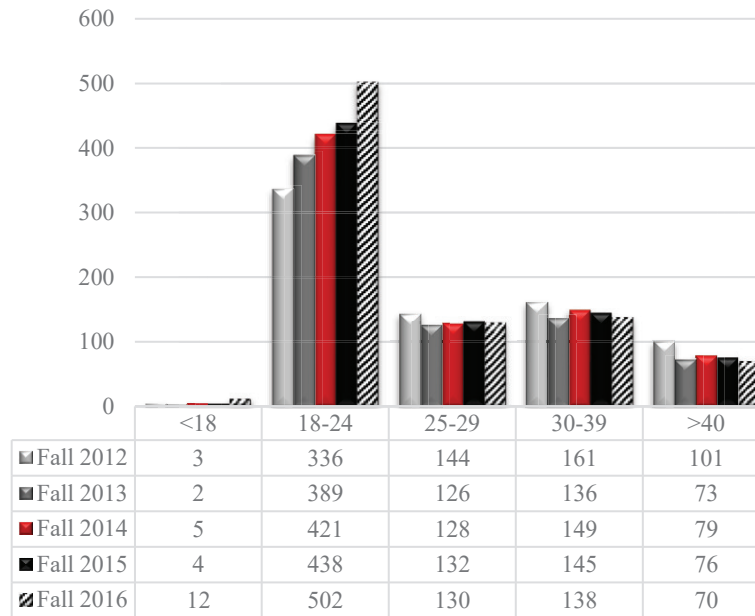
	Fall 2012	Fall 2013	Fall 2014	Fall 2015	Fall 2016
Men Full-time	89	109	72	104	140
Men Part-time	82	61	148	97	93
Total	171	170	220	201	233
Women Full-time	280	283	186	251	318
Women Part-time	294	273	376	343	301
Total	574	556	562	594	619



Student Age - Online

	Fall 2012	Fall 2013	Fall 2014	Fall 2015	Fall 2016
<18	3	2	5	4	12
18-24	336	389	421	438	502
25-29	144	126	128	132	130
30-39	161	136	149	145	138
>40	101	73	79	76	70
Total	745	726	782	795	852

Student Age Distribution - Online



Student Race/Ethnicity – Online

	Fall 2012	Fall 2013	Fall 2014	Fall 2015	Fall 2016
American Indian or Alaska Native	79	68	90	110	115
Asian	8	5	5	2	8
Black or African American	30	25	24	31	33
Native Hawaiian or other Pacific Islander	-	-	-	2	3
Hispanic/Latino	34	34	44	61	65
White	591	594	608	583	605
Unknown	0	0	9	0	1
Non-resident/Alien	3	0	2	3	3
2 or more	-	-	-	3	19

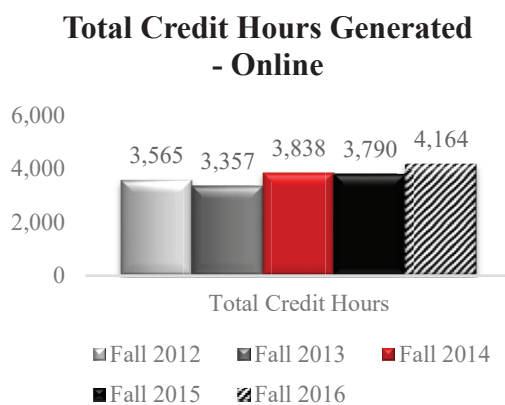
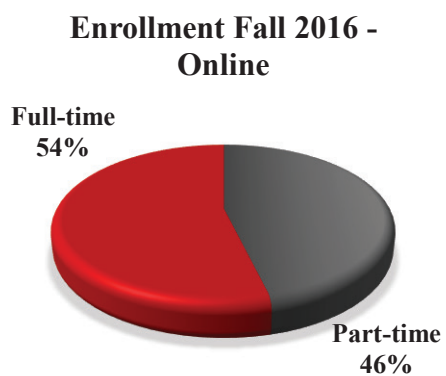
Student Enrollment - Online

	Fall 2012	Fall 2013	Fall 2014	Fall 2015	Fall 2016
Full-time Students	369	392	258	355	458
Part-time Students	376	334	524	440	394
Total Enrollment	745	726	782	795	852

Courses – Online*

	Fall 2012	Fall 2013	Fall 2014	Fall 2015	Fall 2016
Total Course Section Offerings	52	50	55	57	60
Total Credit Hours Generated	3,565	3,357	3,838	3,790	4,164

*Data for fall term only





Accredited Programs

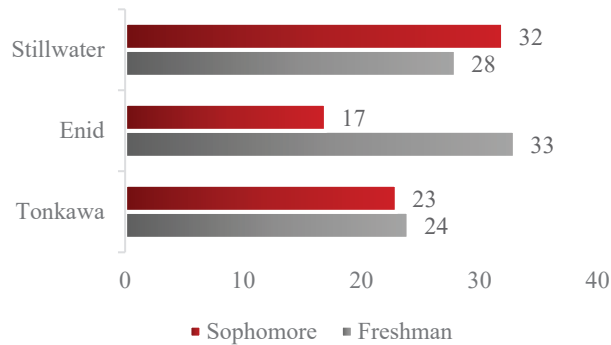


Accredited Programs

Nursing Division

Accredited by the Accreditation Commission for Education and Nursing plus the Oklahoma Board of Nursing*

Nursing Student Count 2016



Gender Count 2016



Faculty/Staff 2016-2017

	Full-time Faculty	Part-time Faculty	Full-time Staff	Part-time Staff
Tonkawa	4.5	1	1	0
Enid	3	0	0	1
Stillwater	4.5	1	0	1
Total	12	2	1	2

Mission

With an understanding that all individuals have worth and potential, we are committed to student learning and success. Using personal interaction, rigorous instruction and innovative technologies, we strive to provide high quality, accessible nursing education that prepares a safe, competent nurse who is committed to compassion, critical thinking and lifelong learning.

NOC Classroom Ratio/

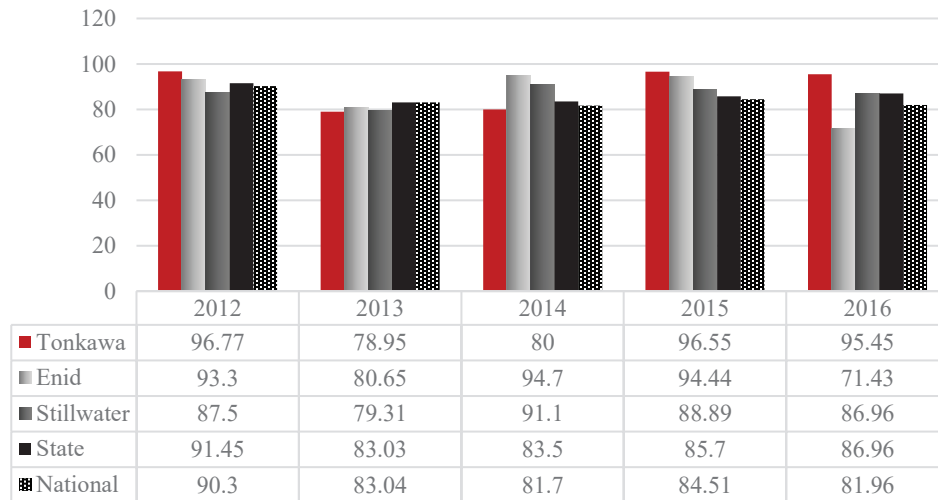
Student to Faculty

14:1

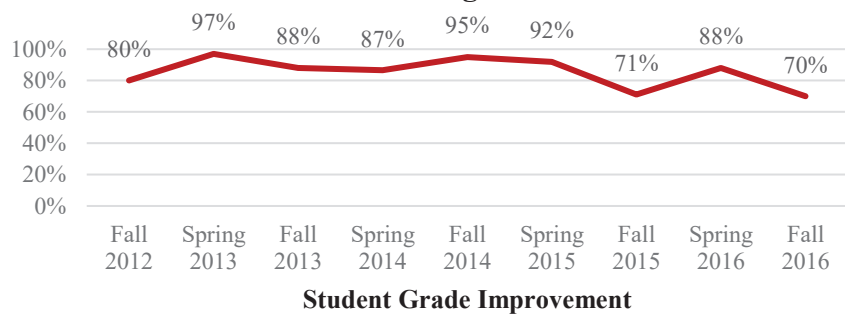
State Ratio

20:1

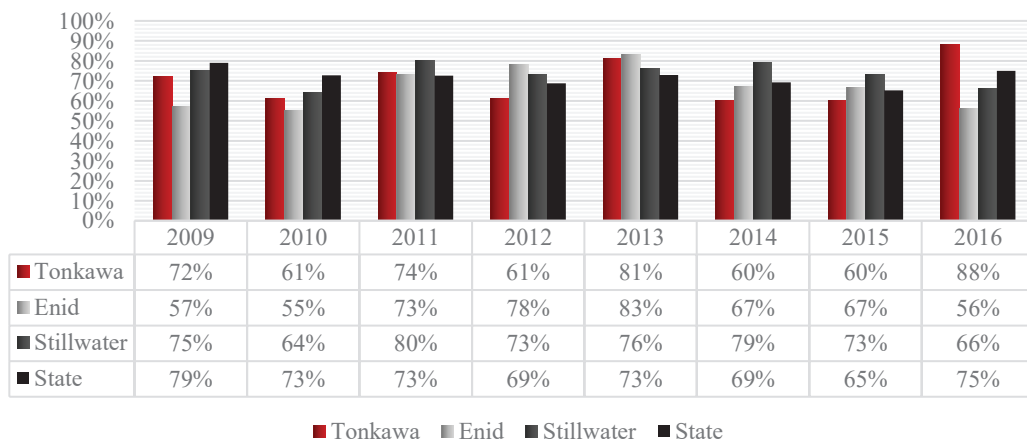
Pass Rates on NCLEX



Assessment and Counseling of At-Risk Students



Completion/Graduation Rates



*For more information on the Nursing program check the Nursing website, <http://northok.publishpath.com/nursing-division1>

Business Division

Accredited by the Accreditation Council for Business Schools and Programs

Data collected from Student Information Systems for the fall semester of the year reported. Data collected for the students declaring one of the majors offered in the Business Division. Students enrolled in a cooperative program were not included.

Student Gender – Business

	Fall 2014	Fall 2015	Fall 2016
Men Full-time	162	227	216
Men Part-time	99	80	87
Total	261	307	303
Women Full-time	95	122	135
Women Part-time	104	80	86
Total	199	202	221

Student Age - Business

	Fall 2014	Fall 2015	Fall 2016
<18	2	1	5
18-24	327	386	399
25-29	52	47	56
30-39	48	46	41
>40	31	29	23
Total	460	509	524

Student Race/Ethnicity

	Fall 2014	Fall 2015	Fall 2016
American Indian or Alaska Native	46	70	77
Asian	4	10	7
Black or African American	21	28	35
Native Hawaiian or other Pacific Islander	-	3	1
Hispanic/Latino	38	55	52
White	311	325	310
Unknown	18	0	3
Non-resident/Alien	22	15	31
Two races or more	-	3	8

Majors - Business

	Fall 2014	Fall 2015	Fall 2016
Associates of Science Degrees			
• Business Administration	347	391	422
• Business Adm-International Option	3	5	3
• Business Adm-MIS option	4	3	4
• Computer Science	46	57	37
• Enterprise Development	no coding	no coding	no coding
Associates of Arts			
• Enterprise Development	no coding	no coding	no coding
Associates of Applied Science			
• Business Management	59	44	47
• Business Mgmt-Accounting Option	0	5	8
• Business Mgmt-Entrepreneurship Option	1	4	3
Total Majors	460	509	524

Degrees Awarded – Business

	AY-2013	AY-2014	AY-2015	AY-2016
Associates of Science Degrees				
• Business Administration	135	114	96	151
• Business Adm-International Option	1	1	0	1
• Business Adm-MIS option	2	1	2	1
• Computer Science	3	6	13	8
• Enterprise Development	no coding	no coding	no coding	no coding
Associates of Arts				
• Enterprise Development	no coding	no coding	no coding	no coding
Associates of Applied Science				
• Business Management	5	5	6	2
• Business Mgmt-Accounting Option	0	2	0	1
• Business Mgmt-Entrepreneurship Option	0	0	1	1
Total Degrees	146	129	118	165

Credit Hours Generated

	Fall 2013	Fall 2014	Fall 2015	Fall 2016
Sections of Eight Week	8	2	4	4
Sections of Fewer than Eight Week	3	2	2	1
Sections of Online	13	13	15	15
Total Course Section Offerings	107	105	96	99
Total Credit Hours Generated	5,048	4,432	4,521	4,758



NORTHERN
Oklahoma College
TONKAWA | ENID | STILLWATER

Studies of Other Student Populations



Studies of Other Student Populations

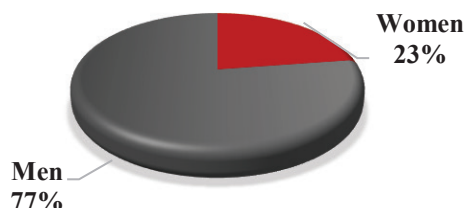
International Students

Data collected from Student Information Systems for the fall semester of the year reported.

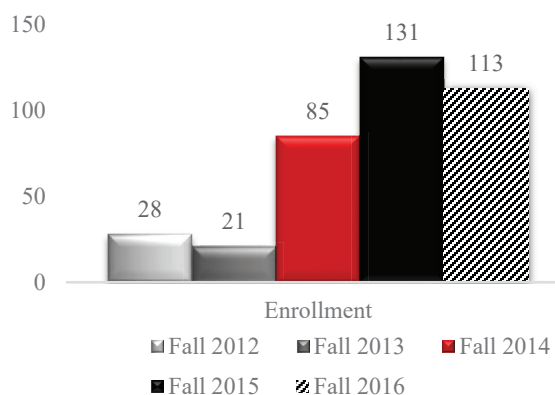
Student Gender – International Students

	Fall 2012	Fall 2013	Fall 2014	Fall 2015	Fall 2016
Men Full-time	16	16	50	111	97
Men Part-time	16	4	18	4	19
Total	32	20	68	115	116
Women Full-time	12	5	8	20	16
Women Part-time	2	4	9	1	18
Total	14	9	17	21	34

Student Gender Fall 2016 - International Students



Student Full-Time Enrollment - International Students



Student Age – International Students

	Fall 2012	Fall 2013	Fall 2014	Fall 2015	Fall 2016
<18	1	0	1	0	0
18-24	37	28	68	115	125
25-29	4	0	13	18	23
30-39	3	1	2	2	2
>40	1	0	1	1	0
Total	46	29	85	136	150

Student Enrollment – International Students

	Fall 2012	Fall 2013	Fall 2014	Fall 2015	Fall 2016
Full-time Students	28	21	58	131	113
Part-time Students	18	8	27	5	37
Total Enrollment	46	29	88	136	150

Student Location – International Students*

	Fall 2012	Fall 2013	Fall 2014	Fall 2015	Fall 2016
Tonkawa	18	14	17	16	30
Enid	3	4	4	9	18
Stillwater	25	11	65	111	111
Total	46	29	86	136	159

*Students enrolled in coursework at multiple locations.

Graduates – International Students

	AY-2012	AY-2013	AY-2014	AY-2015	AY-2016
Graduates	5	4	5	3	12

Student Home Countries – International Students

	Fall 2012	Fall 2013	Fall 2014	Fall 2015	Fall 2016
Countries Represented	21	19	21	28	38

Top Countries Represented at Northern Oklahoma College

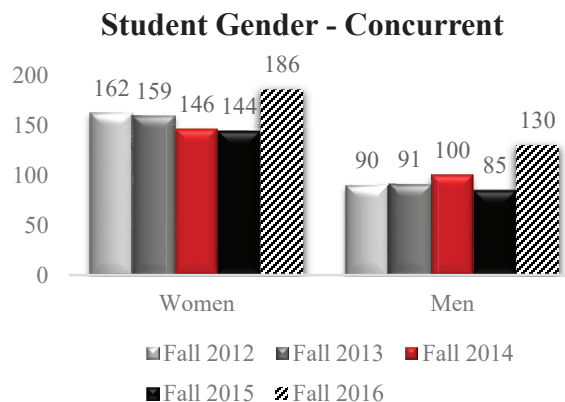
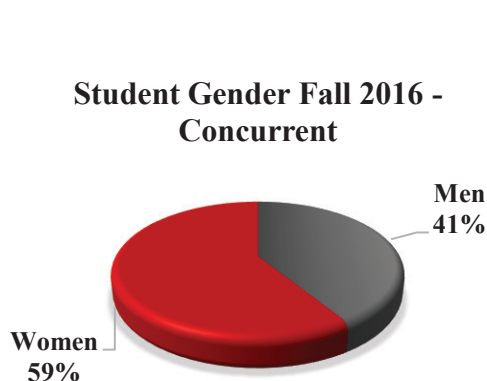
- People's Republic of China
- Mexico
- Saudi Arabia
- United Kingdom

Concurrent

Data collected from Student Information Systems for the fall semester of the year reported.

Student Gender - Concurrent

	Fall 2012	Fall 2013	Fall 2014	Fall 2015	Fall 2016
Men	90	91	100	85	130
Women	162	159	146	144	186
Total	252	250	246	229	316



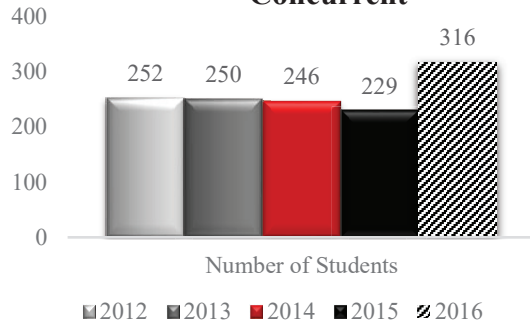
Student Race/Ethnicity - Concurrent

	Fall 2012	Fall 2013	Fall 2014	Fall 2015	Fall 2016
American Indian or Alaska Native	24	14	13	21	23
Asian	3	1	5	2	9
Black or African American	3	1	3	10	5
Native Hawaiian or other Pacific Islander	-	-	-	2	3
Hispanic/Latino	11	10	9	15	19
White	209	223	211	179	248
Unknown	2	1	4	0	7
Non-resident/Alien	0	0	1	0	0
Two races or more	-	-	-	0	2

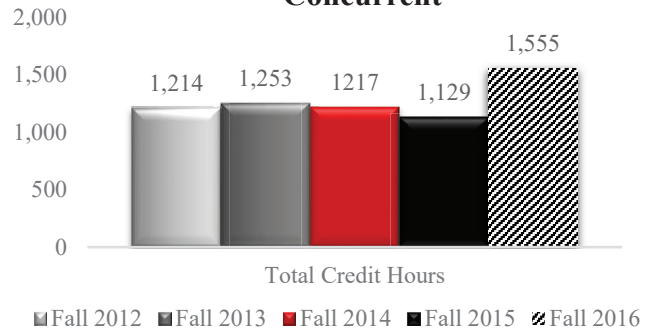
Student Enrollment - Concurrent

	Fall 2012	Fall 2013	Fall 2014	Fall 2015	Fall 2016
Number of Students	252	250	246	229	316
Number of Seats	403	415	405	374	517
Total Credit Hours Generated	1,214	1,253	1,217	1,129	1,555

**Student Enrollment Fall 2016-
Concurrent**



**Total Credit Hours Generated -
Concurrent**



Courses - Concurrent

Top Enrolled Courses	Fall 2012	Fall 2013	Fall 2014	Fall 2015	Fall 2016
BISI 1114 – General Biology	13	8	18	3	7
CS 1113 – Computer Concepts	9	3	7	7	6
ENGL 1113 – English Composition I	123	145	133	125	140
HIST 1483 – American History Early	51	25	26	14	21
HIST 1493 – American History Late	21	23	11	26	53
MATH 1513 – College Algebra	77	65	70	85	102
POLI 1113 – Am Natl Government	33	64	53	51	62
PSYC 1113 – General Psychology	15	32	20	19	32
SOCI 1113 – Principles of Sociology	7	8	6	3	17
SPCH 1713 – Oral Communication	12	12	10	11	24

Location - Concurrent

	Fall 2014		Fall 2015		Fall 2016*	
Tonkawa	62	26%	72	31%	76	23%
Enid	43	18%	37	16%	55	17%
Stillwater	27	11%	19	8%	32	10%
UC	30	13%	20	9%	36	11%
Ed Centers	76	32%	83	36%	130	40%

*Students attended multiple locations

Enid Athletes



Enid GPA - Athletes

	AY-2014	AY-2015	AY-2016
Enid Athletic Department	3.03	3.20	3.06
Women's Basketball	3.04	3.53	3.68
Men's Basketball	2.79	2.96	2.91
Softball	3.07	3.24	3.17
Baseball	3.20	3.13	2.85

Enid Cohort Graduation Rates at 150% - Athletes

	Cohort-2012 Grad Yr-2014	Cohort-2013 Grad Yr-2015	Cohort-2014 Grad Yr-2016
Enid Athletic Department	48%	47%	39%
Women's Basketball	58%	83%	55%
Men's Basketball	14%	40%	25%
Softball*	-	40%	40%
Baseball	52%	39%	35%

*Team was not established in 2012 cohort year

Enid Athletic Department Records

	AY-2014 Wins- Losses	AY-2015 Wins- Losses-Ties	AY-2016 Wins- Losses-ties
Women's Basketball	23-6	27-7	24-7
Men's Basketball	19-10	19-11	21-10
Softball	32-26	37-19-1	35-26
Baseball	35-25	43-16	31-26

Tonkawa Athletes



Tonkawa GPA - Athletes

	AY-2014	AY-2015	AY-2016
Tonkawa Athletic Department	3.07	3.09	3.17
Women's Soccer	3.02	3.22	3.54
Men's Soccer	2.90	3.15	3.21
Women's Basketball	3.33	2.85	3.43
Men's Basketball	3.07	3.24	2.68
Softball	3.19	3.25	3.42
Baseball	2.98	2.94	3.04

Tonkawa Cohort Graduation Rates at 150% - Athletes

	Cohort-2012 Grad Yr-2014	Cohort-2013 Grad Yr-2015	Cohort-2014 Grad Yr-2016
Tonkawa Athletic Department	29%	41%	57%
Women's Soccer	21%	31%	41%
Men's Soccer	29%	54%	50%
Women's Basketball	27%	100%	63%
Men's Basketball	38%	20%	63%
Softball	38%	42%	63%
Baseball	26%	11%	60%

Tonkawa Athletic Department Records

	AY-2014 Wins- Losses	AY-2015 Wins- Losses-Ties	AY-2016 Wins- losses-Ties
Women's Soccer	12-11*	17-2-1	19-2-1
Men's Soccer	17-3-1	7-11-2	11-6-2
Women's Basketball	18-14	11-21	11-18
Men's Basketball	19-12	26-7	23-10
Softball	23-35	29-28	24-27
Baseball	37-24	43-19	32-25

*Team forfeited 8 games due to administrative error.

Special Recognition- Athletes

NOC Enid Jets Women's Basketball:

- 2016-17 NJCAA Women's Academic Teams of the Year with a team GPA of 3.68
- Ranked in the top 15 nationally by the NJCAA
- Recognized by the NJCAA for Academic Excellence with a team GPA of 3.68
- Carley Frymire, Sarah Garvie, Kammi Gruber, and Krisha Young were named 1st Team All-American for Academic Excellence
- Alex Greenhoward, Kylee McVey, Kyndal Pulley and McKenna Pulley were named 2nd Team All-American for Academic Excellence
- Tiarra Davis and Lora Riley were named 3rd Team All-American for Academic Excellence
- Oklahoma Collegiate Athletic Conference Runner-Up
- NJCAA Region 2 Tournament Runner-Up

NOC Enid Jets Men's Basketball:

- Oklahoma Collegiate Athletic Conference Runner-Up
- NJCAA National Tournament Qualifier (1st National Tournament Appearance)
- NJCAA National Tournament Sweet 16
- Ty Lazenby named OCAC Player of the Year and NJCAA 1st Team All-American

NOC Enid Jets Softball:

- Ranked in the top 20 nationally by the NJCAA
- Recognized by the NJCAA for Academic Excellence with a team GPA of 3.19
- Hunter Strickland named 1st Team All-American for Academic Excellence
- Kaylon Dunn and Maddie Powell named 3rd Team All-American for Academic Excellence
- Kallee King named NJCAA National Player of the Week

NOC Enid Jets Baseball:

- Ranked in the top 10 nationally by the NJCAA
- NJCAA Region 2 Tournament Runner-Up
- T.J. Black named 2nd Team All-American for Academic Excellence
- Matthew Connerly, Wade Hanska, and Case Harper named 3rd Team All-American for Academic Excellence
- Carlos Andujar named NJCAA 1st Team All-American

NOC Tonkawa Mavericks Women's Soccer:

- 2016-17 NJCAA Women's Academic Teams of the Year with a team GPA of 3.56
- Ranked as high as 3rd nationally by the NJCAA
- Recognized by the NJCAA for Academic Excellence with a team GPA of 3.53
- Oklahoma Collegiate Athletic Conference Champions
- NJCAA Region 2 Tournament Champions
- Coach Dr. Juan de Dios Castillo named NJCAA Region 2 Coach of the Year
- Monica Davis, Hannah Evans, Carsyn Hill, and BreAnn Tolleson named 1st Team All-American for Academic Excellence
- Rachel Brantley, Rebeka Brantley, Kariss Dunson, Hannah Grant, Keylee Kirk, Abigail Resendiz, and Taylor Sargent named 2nd Team All-American for Academic Excellence

- Megan Mayfield and Morgan Medina named 3rd Team All-American for Academic Excellence
- BreAnn Tolleson named NJCAA 3rd Team All-American and NJCAA National Player of the Week

NOC Tonkawa Mavericks Men's Soccer:

- Recognized by the NJCAA for Academic Excellence with a team GPA of 3.17
- Oklahoma Collegiate Athletic Conference Runner-Up
- NJCAA Region 2 Tournament Runner-Up
- Pedro Braga named 1st Team All-American for Academic Excellence.

NOC Tonkawa Mavericks Women's Basketball:

- Recognized by the NJCAA for Academic Excellence with a team GPA of 3.41
- Grace Brzozowski and Laramie Edens named 1st Team All-American for Academic Excellence
- Rebekah Hissam named 2nd Team All-American for Academic Excellence
- Hannah Nealis and Jaclyn Smith named 3rd Team All-American for Academic Excellence

NOC Tonkawa Mavericks Men's Basketball:

- NJCAA Region 2 Tournament Runner Up
- Brandon Combs and Anselm Uzuegbunem named 3rd Team All-American for Academic Excellence

NOC Tonkawa Mavericks Softball:

- Recognized by the NJCAA for Academic Excellence with a team GPA of 3.40
- Madison Baughman, Ashlie Green, Tawn Neidy, and McKenzie Weigt named 1st Team All-American for Academic Excellence
- Brooklin Burns named 2nd Team All-American for Academic Excellence
- Logan Jegielewicz and Cheyanna Stepp named 3rd Team All-American for Academic Excellence

NOC Tonkawa Mavericks Baseball:

- Ranked in the top 15 nationally by the NJCAA
- Recognized by the NJCAA for Academic Excellence with a team GPA of 3.03
- Keegan Collett, Nic Minor, Alex Rodriguez, and Dalton Tillison named 3rd Team All-American for Academic Excellence
- Keegan Collett was drafted in the MLB Draft by the Baltimore Orioles in the 35th round
- John Santos was named NJCAA National Player of the Week



NORTHERN
Oklahoma College
TONKAWA | ENID | STILLWATER

Year-End Highlights



Year-End Highlights 2016-2017

Special Recognitions

- NOC Stillwater Assistant Registrar and Business Division Adjunct Faculty member Sherryl Nelson was nominated for the Stillwater Emerging Leaders under 40 Award.
- Todd Ging was selected as President of Enid A.M. AMBUCS and Vice-Chair of Cedar Ridge Wesleyan Church Board. He was also selected to serve on the Visit Enid Advisory Board.
- Business Division Adjunct Faculty member Roy Bartnick was selected by the Department of State's Bureau of Educational and Cultural Affairs as the recipient of one of 47 US teachers who earned an international fellowship for Teachers for Global Classrooms to travel to another country to share his teaching knowledge with their educational leadership and help develop the concept of globalized classrooms. He was also selected to participate in the Teacher Under the Sea program through Florida International University, where he spent three weeks in an underwater habitat.
- Director of Musical Theatre, Chad Anderson, performed a featured role in the Oklahoma City Philharmonic's Christmas show in December as part of the Pops Chorale. This is his 12th year performing with the Philharmonic.
- Four faculty members were selected by their division chairs and peers to be named as NISOD recipients for the excellence they demonstrate in teaching and leadership at Northern. The 2016-2017 NISOD recipients were Mr. Darrell Frost, Sociology Instructor and 2017-2018 incoming Division Chair, Ms. Stacey Frazier, Language Arts Instructor; Ms. Leslie Johns, Business Instructor; and Dr. Frankie Wood-Black, Chemistry and Pre-Engineering Instructor. These four instructors attended the annual NISOD conference in Austin, where they joined other awardees in a special recognition ceremony and two and a half days of sessions on best teaching practices.
- Jill Harmon, Tonkawa Business instructor, was selected as the ACBSP Region 6 Teaching Excellence Award recipient. Region 6 covers the 5 state region of Texas, Oklahoma, New Mexico, Arkansas and Louisiana.
- Cara Beth Johnson, Business Division Chair, was appointed to the ACBSP Dean's Symposium planning committee. The committee is charged with planning the conference targeting deans and chairs which will be held in Chicago in September 2017.
- Rae Ann Kruse was selected for Chamber of Commerce Leadership Stillwater Class XXV and served as the board of director's intern for Stillwater Area United Ways Projects.
- Shannon Cunningham was selected as one of the Top 10 Emerging Leaders Under 40 for Stillwater and was chosen to attend the League for Innovation's Executive Leadership Institute in December 2016.
- 2016 Awards from the Oklahoma Colleges Public Relations Association (OCPRA) included the following: Poster Design (Fine Arts/Culture): 2nd Place, "Kindred Strokes"—Jamie Haney.

Northern celebrated the retirements of the following employees with a luncheon in their honor:

- Ms. Nancy Brown, Print Shop Specialist, retiring after 27 years of service.
- Mr. Gene Laughrey, Business Instructor, retiring after 38 years of service.
- Mr. Randy Long, Director of Printing Services, retiring after 36 years of service.
- Mr. Ray Shreck, Social Science Instructor, retiring after 37 years of service.
- Mr. Mark Silkey, Social Science Instructor, retiring after 18 years of service.

Student Special Recognitions

- Over 400 students participated in the 111th commencement ceremony on May 6, 2017. As of that date, 833 students had earned degrees, with 86 earning double degrees for a total of 919 degrees to be conferred. Approximately 260 graduates attended the Tonkawa commencement ceremony and 150 attended the Enid commencement ceremony.
- Over 200 Northern students were recognized for their academic achievements at receptions hosted in Tonkawa on April 12, Stillwater on April 18, and Enid on April 26. Students received recognition for top performance in individual programs, 4.0 GPAs, and Who's Who nominations. Faculty from all 3 campuses participated in the ceremony, presenting the awards.
- 92 students qualified for invitation to Kappa Beta Delta Honor Society for 2016-2017. To qualify for the Honor Society, students must have a 3.0 GPA, be in the top 20% of their class and have completed at least 6 hours of business-related coursework.
- DMI students submitted three films for the BisonBison Film Festival. Two films, Untitled and Alpha One, placed 1st and 2nd in the 9th Annual Epic Shorts Student Film Festival and one won the 48Hr Film Festival Challenge in January, The Puppeteer (competition required creating a movie from start to finish in 48 hours from start to finish). The movies were screened for the competition on April 7 and 8. In addition, Raphael Buhay (2017 DMI graduate) was accepted into the prestigious Savannah College of Art and Design (SCAD). SCAD has additional

campuses in Atlanta, Hong Kong, Lacoste, and online and exists to prepare talented students for professional careers in the Arts, Architecture, and Design. Past NOC graduates who have attended SCAD include Leonardo Guerrero (2016), Chase Hardin (2016), Cameron Hopkins (2016), Jason McNaughton, Scott Rigney (2015), and Trendelyn Ross (2016).

- Elizabeth Bond, freshman at NOC STW, was selected for the N.E.W. Women's Leadership Program and attended that program in May 2017. She also represented the OK Quarter Horse Association at the All American Quarter Horse Congress judging contest in Columbus, OH, in Oct. 2016, where she was named 9th in Halter, 9th in Performance, 6th in Reasons, and 8th Overall.
- Monica Davis was chosen as part of Oklahoma Medical Research Foundation's 62nd class of Sir Alexander Fleming Scholars. She will have an opportunity to work with a senior medical researcher in one of OMRF laboratories during Summer 2017. Monica is an NOC student planning to become a biochemist.
- Dylan Mulligan and Owen Simpson were selected as student panelists for the 7th Annual Promoting Undergraduate Research Conference: Thinking Outside the Lab: Empowering Students at all Tiers to Engage in Budget Neutral Research in the Social Sciences, Humanities, Arts, and Sciences. This was the second year in a row that NOC Agriculture, Science, and Engineering students were selected as panelists.
- Katherine Davis was selected for a 2017 Newman Civic Fellowship. Katie was recognized for her work in developing age-appropriate science experiments for local elementary school students and leading NOC science club members in presentations.
- Students from the NOC Livestock Judging Team received numerous recognitions this year, including awards at the Oklahoma State Fair, including Champion Dorset Ram (NOC 6034), Champion Hampshire Ram (NOC 6075), and Champion Suffolk Ram (NOC 6072). Winners in the Junior Breeding Sheep Show at the Tulsa State Fair were as follows: Champion Dorset ewe and 3rd Overall (NOC 6109), Class winner in the Dorset Regional Show March and after class and TSF Jr. Show April class, shown by Otto Cardwell; Class Winning April Hampshire Ewe Lamb at the 2016 TSF Jr. Breeding Show, shown by Abby Cardwell; and First and Second place April Suffolk Ewe Lambs, shown by Haley Braden. At the Ft. Worth Stock Show and Rodeo Open Sheep Show on Jan. 21-22, students fitted and exhibited 17 head of Dorsets, Hampshires and Suffolks. NOC 6010 was named the Reserve Champion Dorset Ewe of the show judged by Warren Cuud of Texas. 6010 is a daughter of "Hines" Heisdorffer 102 and NOC 4002. She is the twin to NOC 6009 who was Reserve Champion Dorset Wether Dam at NAILE this past fall. Her dam NOC 4002 was also the Champion Dorset and Supreme Ewe at the 2015 FWSSR. Students in the spring section of Sheep Production were Tyler Fast, Cooper Phillips, Katy Harris, Corley McCaslin, Aspen Evans, Maddie Nation, Cheyenne Gaff, Josh Sheets, Kyle Nicholson, and Levi Herren. At the Arizona National Livestock Judging Contest held in Phoenix on December 31st, NOC placed as the High Point JUCO Pro Team (Sophomores) and the High Point JUCO Novice Team (Freshman). Additional awards for the Freshman team included 1st in reasons in the cattle, sheep and swine divisions, Tyler Fast was top individual, Levi Herren, 3rd, Cooper Phillips, 4th, Jordan Scott, 6th, Maddie Nation, 7th, and Corley McCaslin, 9th. Sophomore team results were Caroline Hughes, top individual, Caleb Penwell, 2nd, Brandon Stallings, 7th.
- The NOC Sheep Center took honors at the North American International Livestock Expo in Louisville, KY, exhibiting their Hampshire and Dorset show flocks. In the Hampshire show NOC 5094 "Rose" was named the Reserve Senior Champion Slick Shorn Hampshire Ewe. Rose was also Res Champion ewe at both the 2015 TSF Open Show and the 2016 FWSSR. In the Dorset Show NOC exhibited the Reserve Champion Dorset Wether Sire, NOC 6034 "Special Reserve," and the Reserve Champion Dorset Wether Dam, NOC 6009. NOC also went on to receive the honor of the 2016 Premier Dorset Flock Exhibitor for the National Dorset show. Students in the NOC Sheep Production and Management class were Kacy Kincaid, Kaylin Gemmill, Kyle Lane and Justen Winburn.
- Six NOC students received the OACC All American Team Recognition – Colton Jarvis and Carina Gutierrez from the Enid campus, Mandy Brown and Charity Robertson from the Stillwater campus and Katherine Davis and Dylan Mulligan from the Tonkawa campus. Additionally, Kyle Mathias from the Tonkawa campus and Christopher Tydings from the Enid campus received the OACC Tuition Waiver Scholarship.
- The NOC Foundation awarded the NOC Alumni Legacy Scholarship at the Alumni and Friends Reunion on Saturday, March 25. This year's recipient was Austun Hall. Austun is a freshman on the Tonkawa Campus and his parents are Northern alums.

Advisory Boards, Internships, and Job Shadowing

The following advisory boards met in 2016-2017, offering input on program curriculum, workforce skills, and other quality indicators:

- Agriculture Advisory Board-Sept. 1, 2016

- Mass Communications Advisory Board-Sept. 22, 2016
- Process Technology Advisory Board-Sept. 30, 2016, and Feb. 24, 2017

During the September meeting, students also had mock interviews scheduled to better prepare them for job searches.

- Health, Physical Education, and Recreation Advisory Board-Nov. 2, 2016

This was the launch of a new Advisory Board for HPER.

- Business Advisory Board-Nov. 3, 2016, and April 12, 2017
- Criminal Justice Advisory Board-March 1, 2017
- Nursing Advisory Board-April 14, 2017

25 students completed internships in 2016-2017 and over 27 students completed job shadowing.

Competitions and Conferences Hosted at Northern Oklahoma College

- NOC's Annual Sheep Field Day was held on July 18 with about 120 kids participating.
- The annual Maverick Sheep Show was held on August 20 and was the largest show to date with 150 entries.
- The Mackie Planetarium continues to host numerous groups from the community. Over 20,000 visitors have gone through the NOC Astronomy Center since its opening.
- The third annual Chikaskia Literary Festival was held October 13 and 14. With matching funding provided by the Oklahoma Arts Council, the festival brought in three featured writers: Oklahoma Book Award Winner Constance Squires, Oklahoma Poet Laureate Ben Myers, and NEA Award Winner Lisa Lewis.
- The NOC Livestock Judging Team and Northern Aggies Club hosted the annual Fall Classic Heifer and Steer Show on Nov. 5. It was the largest show to date with 134 head of cattle entered. The team also hosted the annual Agriculture Interscholastics. The Livestock Judging contest was held on Jan. 16 with 173 students competing.
- Northern Oklahoma College Language Arts faculty played a huge role in organizing the National Association of Developmental Education (NADE) national conference in Oklahoma City, March 1-4. The theme of the conference was "Winds of Change," which refers to the changes that developmental education is seeing in the United States. The conference had 987 people in attendance with over 180 workshops in developmental education, including Math, Reading, English, Student Services, and Student Success. There were three keynote speakers: Major Ed Pulido, Jose Ferreira, and Mark Mitsui, in addition to a speaker well known in developmental education circles, Hunter Boylan. Dr. Cathy Moore served as co-chair for the conference, Stacey Frazier as treasurer, Alicia Sharp as exhibits chair, and assisting with registration, information, and session moderators were Tammy Davis, Diana Watkins, Lisa Nordquist, Dr. Don Stinson, Dr. Brandon Hobson, Scott Haywood, Dean Pearcy, Starla Reed, and Dr. DeLisa Ging.

Community Service and Service Learning

- Voter Registrations drives were held at all three locations on Constitution Day in September. NOC registered 193 new voters and was runner-up in the OK Campus Compact Voter Registration Contest for the mid-sized college category.
- Tonkawa Chemistry instructor, Lisa McGaw, led numerous workshops for AP chemistry students and teachers throughout the year, including sessions in Enid, Oklahoma; North Charleston, South Carolina; San Antonio, Texas; Houston, Texas; Pasadena, Texas; Birmingham, Alabama; Donna, Texas; St. Louis, Missouri; Fargo, ND; Lancaster, Texas; San Pedro, California; Minot, North Dakota; Manhattan, Kansas, and Pensacola, Florida.
- Lisa McGaw attended and presented at the ACS (American Chemical Society) Southwest Regional conference in Galveston, TX, on Nov. 10-13, and attended the local section of American Chemical Society meeting in Stillwater on Nov. 17. Dr. Frankie Wood-Black was a presenter at this meeting as well.
- Eddie Dixon, Jena Kodesh, Brad Matson, and Audrey Schmitz taught classes at Arts Adventure in Summer 2016.
- NOC students joined Study Abroad trips in 2016-2017 to Italy and Greece, England and Scotland, the Dominican Republic (service learning), Costa Rica, Peru, and Dublin.
- New Criminal Justice instructor Troy Cochran escorted criminal justice students to an art exhibit that displayed art from students in the juvenile justice system. The Enid newspaper published an article with pictures and quotes on September 2.
- Tammy Davis continued work with Lincoln Academy, leading her composition students in a service learning project working with high school students on an anthology of writings based on the "This I Believe" model.
- Laura Marshall took 4 students to the Who Wants to Be an Entrepreneur? seminar on Oct. 7.
- Nursing students on all three campuses participated in numerous community service projects in 2016-2017, including the following:

- Assisting hundreds of community members through Vital Sign Clinics on the NOC campuses and at Renaissance Assisted Living, Williams Foods in Perkins, Food Pyramid in Stillwater, and Project Heart/Senior Citizens Center in Stillwater.
- Conducting Handwashing Clinics at Tonkawa Elementary, St. Paul's Lutheran School in Enid, Carver School, Busy Bee Daycare, Stillwater Public Schools, Stillwater Daycares, and Stillwater Head Start.
- Leading mother and baby health sessions for teenage mothers at Ponca City's Teen Pep program.
- Conducting hearing screenings for all elementary students at Pioneer-Pleasant Vale, Drummond, Waukomis, and Cimarron schools.
- Giving 579 flu shots with Advance Pierre Foods.
- Organizing a campus chili cook-off to benefit the Enid Community United Way. Jessica Pitts was this year's winner. SNA collected \$50 for the donation as well as our participation.
- Organizing a food drive for the local homeless shelter in Stillwater and collecting 268 food products.
- In addition to all of the community service projects, in spring 2017, all freshmen nursing students participated in a four hour disaster training exercise in conjunction with the Ponca City Fire Department, Ponca City EMS Group B and Pioneer Technology Center. The event was geared to help students learn safety and the nurse's role if they are the first to respond at a crash scene.
- Enid Biology instructor Dr. Mary Ann Harris, along with her General Biology class, completed a community service project by providing more than 200 hygiene items for Enid's Loaves and Fishes community pantry.
- Enid Biology instructor Mary Ann McCoy organized an ALS Ice Bucket Challenge in November 2016. There were 111 students and faculty that participated in the challenge over the two-day period. The director for the Oklahoma ALS Assoc. attended on Nov. 22; an ALS patient was also in attendance.
- PTEC Director and Physics instructor Dr. Frankie Wood-Black conducted a workshop at Lehigh University on Communication Strategies for the American Chemical Society on Oct. 15
- Dr. DeLisa Ging sponsored monthly Literature Club and Oklahoma Student Education Association meetings on Nov. 28, when club members decorated a pet angel tree for Furever Friends, a Garfield county animal rescue.
- Stacey Frazier sponsored the Maverick Magic club collecting canned foods for campus wide food drive.
- Dr. Pam Stinson served as a Character Counts coach for Tonkawa Public Schools.
- Tammy Davis and Diana Watkins facilitated writing workshops with high school students at Mulhall-Orlando this year.
- Scott Haywood and Dean Percy hosted the 6th annual "Because We Care" car show on April 1. Attendance was low due to weather, but they were able to collect a carload of non-perishables as well as \$135 for the Tonkawa Food Bank.
- Diana Watkins and the Stillwater PLC hosted a blood drive with OBI on campus.

Performances, Presentations, and Publications

- PTEC Director and Physics/Chemistry instructor Dr. Frankie Wood-Black attended the American Chemical Society Meeting, August 22-24 and presented 3 posters and 4 papers. Three of the presentations were recorded. One of them, Perception of Risk, will be available online, and the other two are going to be part of an ACS symposium series. Frankie also published the weekly "All about Science" column in the Ponca City News.
- Tonkawa Biology instructor Gene Young has been involved in numerous publications, including co-authoring a report with a former NOC student, Jorge Matamoros, and current NOC student, Aaron Haggard, in nursing, on algae at Slate Creek Wetlands in Sumner County, Kansas; publishing a report co-authored with former NOC student, Alexis Whiles (currently attending OSU), on Black-billed Magpie; publishing a review for a book on Winter's Hawk: Red-tails on the Southern Plains; and publishing a paper in the peer-reviewed Oklahoma Ornithological Society Bulletin (49[4]:34-36): "Index of Bird Names: Vol. 49, 2016." Gene also attended the Wings-N-Wetlands Festival in Great Bend, Kansas, on April 28-30, and was an invited presenter to give a talk on "Advanced Shorebird Identification: Subtle Peeping at Peeps."
- Wade Watkins served as a panelist discussing "Trends in Global Education" at the April 14th NAFSA conference in OKC.
- Dr. Rae Ann Kruse, Dean of Academic Services, had an article from her dissertation research accepted for publication in the August 2017 issue of The Rural Educator. The article was entitled "Becoming a principal: access factors for females."
- Dr. Paul Bowers and Dr. Don Stinson were both featured readers in Norman on April 29. The reading was part of the Mark Allen Everett Poetry Series.

- Dr. DeLisa Ging hosted an April Reading sponsored by the Lit club and the Student Oklahoma Education Association for Veronica Fuxa, NOC PLC student and author of *What is Normal?* DeLisa also presented a two-hour session on creative writing at the Enid Writers' Conference that was held on April 22.
- Dr. Brandon Hobson's newest book, *Where the Dead Sit Talking*, is forthcoming from SoHo Press in 2019.

Professional Development

- Alicia Sharp, Stacey Frazier, and Cathy Moore attended the NADE (National Association of Developmental Education) meeting in Oklahoma City on September 8-10. They are working on the national conference to be held in Oklahoma City on March 1-4.
- The following topics were addressed in professional development activities offered in 2016-2017 for faculty and staff in addition to funding being provided for seminars, graduate courses, and other external offerings: Advisor training, Quality Matters, Diversity workshops, a day trip to Sam Noble Museum, technology training in Blackboard, two workshops on active learning, a workshop on First Generation students, closed caption training, Advisor training, CPR training, a Strength Finders workshop, campus safety training, and a speaker for Women's History.

Memberships/Affiliations

- Cassie Firth served as part of the Math Pathways Task Force and Steering Committee to present Math Pathways initiative to colleges across the state. As a member of the Co-Req Steering Committee, Cassie was also a member of the discussion panel on the math initiative at OACC on Oct 7. She attended the Fall 2016 Dana Center Mathematics Pathways Leadership Academy in San Antonio on Oct 19-21.
- Jena Kodesh served on the Arts Advocate's Board for the OSU Museum of Art.
- Gene Young attended the annual fall meeting of the Oklahoma Ornithological Society, Oct. 7-8, in Jenks, OK, where he was selected editor of the peer-reviewed scientific publication of the society, the Bulletin of the OOS, for the 5th consecutive year. He also serves as a board member for the organization and was Co-Chair of the local committee for the Kansas Ornithological Society annual spring meeting on May 6-8 at Camp Horizon, Arkansas City, KS.
- President Evans served on the Council of Presidents (25 Public University and College Members).
- Vice President for Financial Affairs, Anita Simpson, served on the Council of Business Officers.
- Vice President for Student Affairs, Jason Johnson, served on the OSRHE Council of Student Affairs.
- Vice President for Development and Community Relations, Sheri Snyder, served as NOC's representative on the OSRHE Economic Development Council. In addition, she served as a board member for the Northwest Oklahoma Workforce Investment Board, a State Advisory Board Member for the Oklahoma Small Business Development Council, and a member of both the Ponca City and Tonkawa Chambers of Commerce, as well as a member of Ponca City Public Schools Community Advisory Board. She also served as legislative liaison for the college with the Oklahoma Ethics Commission. She is the executive director for the NOC Foundation and secretary for the Enid Higher Education Council.
- Vice President for Academic Affairs, Pam Stinson, served on the OSRHE Council of Instruction and as a peer reviewer for the Higher Learning Commission.
- Vice President for Enrollment Management, Rick Edgington, was a member of OACRAO (Oklahoma Association of College Registrars and Admission Officers) and as a peer reviewer for the Higher Learning Commission.
- Vice President for NOC Enid, Ed Vineyard, served as a board member on the Associate Degree Commission for the Accreditation Council for Business Schools and Programs (ACBSP) and as a board member and newsletter editor for the Salvation Army of Enid. He also served as an ex-officio member of the Greater Enid Chamber of Commerce board and as the college representative on the Enid Entrepreneurship Leadership Series Board.
- Vice President for NOC Stillwater, Shannon Cunningham, served on the Council of Extended Campus Administrators.
- Dean of Academic Services, Rae Ann Kruse, served as a board member for the Tonkawa Chamber of Commerce.

Institutional Updates

- Over 500 guests were in attendance at the Carl and Carolyn Renfro Fall Lectureship featuring *The Texas Tenors Live in Concert* on September 28 in the Kinzer Performing Arts Center. Approximately 300 of those guests attended a dinner prior to the event in the Renfro Center.
- On September 19, Northern Oklahoma College officially named and dedicated the James Room at NOC Enid in honor of Former Regent Keith James for his service to the Board for 20 years.

- NOC alum and Distinguished Alumni Hall of Fame inductee Bill Phelps shared his personal story of success with pre-engineering/engineering students on November 4.
- Guest assembled for the Central Hall Open House on October 19, celebrating the interior renovation and exterior restoration of the 115-year old landmark building at NOC Tonkawa.
- Approximately 50 board members, donors, students and guests attended the quarterly meeting as well as donor appreciation event of the Enid Higher Education Council on October 13 at NOC Enid. NOC Enid Sophomore Kaitlyn Davis did an outstanding job representing NOC as she thanked the donors.
- A group of 21 from NOC attended Higher Education Day at the Capitol on February 14.
- Donors to the Northern Oklahoma College Foundation gathered February 28 for the annual dinner recognizing their assistance in enabling NOC students to pursue their academic goals. Chair of the NOCF Board of Trustees Tom Poole welcomed 230 guests in the Renfro Center. NOCF Executive Director Sheri Snyder recognized the donors to the 2016 Honor Roll and was joined by Development and Donor Relations Director Kirby Tickel-Hill to introduce the 80 student scholarship recipients in attendance and note their specific scholarships. Scholarship recipients Mathew Gray and Karen Sigala, representing the students receiving scholarships for this academic year, expressed their gratitude to the donors and told briefly how their scholarships had allowed them to fulfill their ambitions. Scholarship recipients and Fine Arts students Christian Searle and Olivia White provided entertainment. Dr. Evans concluded the evening by sharing some institutional highlights.
- The annual Greater Gifts Drive (direct mailing campaign) was mailed out to our alumni/donor database in November. Additionally, the annual employee campaign was also sent out to solicit program and scholarship support. To date, the 2016-2017 annual drive and employee campaign has received over \$128,000 in total contributions, over \$5,000 in corporate matching contribution pledges and employee payroll deductions from 37 employees totaling over \$40,000.
- The Northern Oklahoma College Presidential Partners Program is an annual giving program through the NOC Foundation supporting the college and enriching the experience of NOC students. As a result of the October mailing, we have received \$21,850 thus far in contributions and pledges from various donors supporting the program for the 2016-2017 academic year. The Foundation received \$32,167 in total contributions for the 2015-2016 academic year.
- Three Northern alumni were inducted into the Northern Oklahoma College's Distinguished Alumni Hall of Fame at this year's Alumni and Friends Reunion held on March 25. The 2017 inductees were Mrs. Nevona Kegans-Bossert, Class of 1961; Mr. Mike Loftis, Class of 1974; and Mr. Bill Phelps, Class of 1958. Over 110 attended the event as we also recognized the 2017 honor graduates. Guests had the opportunity to attend the Roustabouts Benefit Concert following the reunion dinner.
- A groundbreaking ceremony was held in Stillwater on March 22 to celebrate the construction of the Northern Oklahoma College Stillwater Classroom Building. In addition to NOC President Cheryl Evans and OSU President Burns Hargis, remarks were delivered by NOC Stillwater Vice President Dr. Shannon Cunningham; Regent Lou Watkins, OSU/A&M Board of Regents Chair; and Regent Jeff Cowan, NOC Board of Regents Chair.
- Over 330 guest attended the Carl and Carolyn Renfro Spring Lectureship on April 27. Guest speaker for the event was **Andrew Natsios**, Executive Professor and Director of the Scowcroft Institute of International Affairs at the George H.W. Bush School of Government at Texas A&M University.
- Approximately 375 guests/performers attended the Gala XXII Concert in the Kinzer Performing Arts Center on April 30. Maestro Gerald Steichen conducted the Gala, featuring Tenor Daniel Neer along with NOC music faculty/students and the Gala Orchestra.
- Five Oklahoma Promise students and three administrators attended Oklahoma's Promise Day at the Capitol on April 18.
- Northern Oklahoma College and the University Center at Ponca City hosted guest speaker Devery Youngblood, CEO of Oklahoma Tomorrow at the Kay County luncheon on May 19.
- Assisted in planning, advertising and executing NOC Goes Live on Facebook. Area high school students will be able to ask any college related questions and have them answered by NOC Staff and professionals on Facebook Live. First airing began Friday, March 24, 2017. Facebook Live reached 13,711 people and has been viewed over 3,468 times thus far.
- OSRHE Business Partnership Excellence Award - On March 7, NOC had the honor of recognizing Evans & Associates Enterprises, Inc. as the 2017 Business Partner during an awards luncheon at the University of Central Oklahoma. This award is designed to highlight successful partnerships and further cultivate the higher

learning environment through the State Regents' Economic Development Grants. Below is the narrative about the partnership:

- *"Northern Oklahoma College and Evans & Associates Enterprises, Inc. – For more than eighteen years, Northern Oklahoma College and Evans & Associates Enterprises, Inc. have enjoyed a partnership centered on higher education as well as on economic development. In 1999, the company's \$5,000 contribution to the NOC Foundation established the endowed Evans & Associates Company Scholarship Fund, which allows the annual awarding of scholarships to qualified Oklahoma residents enrolled at NOC Tonkawa. In 2015, they established a second endowment through the NOC Foundation entitled Enid Concrete Scholarship Fund, which provides Oklahoma residents enrolled at NOC Enid an opportunity to pursue their educational goals.*
- *As a proud and permanent part of the local community since 1960, Evans & Associates continues to serve the citizens through the construction of city streets, county roads, State and Federal highways, airport runways, parking lots and driveways. Mr. Jerry Evans, founder, believed that businesses should be a strong part of the community in which they conduct operations. Enid Concrete has existed since 1968 serving the citizens and businesses in the Enid area. The company employs over 300 associates statewide and continues the proud tradition of its founder with a reputation for quality and integrity.*
- *To date, the annual endowment support of \$10,000 has provided 19 students with over \$15,000 in scholarship assistance in Northern Oklahoma. The partnership with Evans & Associates Enterprises, Inc. will continue to impact NOC and its Oklahoma students for generations."*
- On May 17, NOC held a naming and dedication ceremony for the Glass Room in the Memorial Student Union on the Tonkawa Campus in honor of Marlin "Ike" Glass. Former State Regent Glass was recognized for his service with the OSRHE and Northern Oklahoma College.
- In conjunction with graduation practices on May 2 and 3, the Northern Oklahoma College Foundation and the NOC Alumni & Friends Association gave graduates a 5x7 picture frame as well as a complimentary one-year membership to the NOC Alumni and Friends Association (190 Tonkawa/Stillwater graduates and 121 Enid graduates).
- A gift to the graduates again this year was a digital photograph of them accepting their diplomas and of the nurses pinning ceremonies on each campus. Students downloaded their free digital graduation photo at <http://www.noc.edu/graduation-photos-2017> courtesy of Northern Oklahoma College.
- Sixty-two (62) institutional fundraising activities totaling \$292,950.00 between the three locations were filed through the Development office, of which 46 fundraisers were processed through the NOC Foundation.
- Working with the Academic Affairs office and faculty on the annual academic awards receptions, the NOC Foundation processed cash scholarship awards totaling \$4,950.00 recognizing several students' outstanding year-end accomplishments.
- The Foundation awarded over \$850 through the Masonic Fraternity of Oklahoma Endowment and over \$14,000 through Presidential Partners Program in grants to 14 programs/activities.
- The Foundation awarded \$249,528.55 in scholarships to 312 recipients from Tonkawa, Enid and Stillwater campuses plus \$26,578.54 in loans to 107 Tonkawa and Enid students. Ten-year award summary shows the NOCF scholarship awards have increased \$160,000/64% and the number of student recipients has increased 62%.
- The Alumni and Community Relations Office hosted/participated in 12 employee, alumni and graduation events and 21 economic development/legislative events. In addition, the Marketing Department participated in five targeted advertising events.
- Northern hosted the following groups for their leadership tours on our campuses: Leadership Blackwell, Leadership Ponca City, Leadership Newkirk, Leadership Tonkawa, Leadership Enid and Youth Leadership of Oklahoma Northwest Summit.
- Northern Oklahoma College hosted 6 Facebook Live editions reaching 18,812 people and being viewed 5,468 times.
- NOC continues working with Oklahoma ABLE Tech Accessibility Coordinator updating our website to breakdown accessibility barriers. We are currently forming a web accessibility task force to work towards accessibility for all. This ongoing project with Oklahoma Able Tech will strive to seek out solutions that will bring all areas of the site up to the same level of overall web accessibility in accordance to the requirements of Section 508 of the Rehabilitation Act of 1973, the Americans with Disabilities Act of 1991 and Web Content Accessibility Guidelines (WCAG) 2.0/AA.

- A new Personal Trainer degree option for HPER was introduced in Fall 2016.
- The Oklahoma State Regents for Higher Education also approved four new degree options in Agriculture that will be marketed beginning Fall 2017: Agriculture Business, Agriculture Communications, Plant and Soil Science, and Pre-Vet Options.
- NOC's final report for the 2008-2018 cycle Quality Initiative was submitted on August 31, 2016. The report highlighted efforts to improve remediation models and training for academic advisement as two primary focuses for increasing retention and completion rates. HLC approved the final report as representing a significant effort to improve.
- NOC was awarded the Native American-Serving Nontribal Institutions (NASNTI) federal grant in the amount of \$1.75 million from the United States Department of Education. The grant will be awarded over a five-year period beginning October 1, 2016. The grant is to improve academic programs and fiscal support for student services for Native American students on the NOC Tonkawa campus but with institutional enhancements that will benefit all students. Charlene Flanery was selected to be 50% Project Director for the Grant, retaining her role as Grant Coordinator 50% of the time as well; Brandy Chambers filled in the other 50% of Charlene's existing position through a Grant Associate role and began on Jan. 24. Ted Moore began Jan. 23 as the Director of the grant's Cultural Engagement Center. Anna Scott began on May 1 as the Distance Learning Specialist. All new positions were funded through the grant.
- Barb Stadler was awarded a \$12,000 WebAssign Philanthropic Award to be used for technology needs in the math classroom.
- NOC was awarded a grant for \$1,250 from the Oklahoma Arts Council to fund the annual Chikaskia Literary Arts Festival, which took place Oct. 13-14, 2016, on NOC Tonkawa campus.
- On March 22, 2017, NOC celebrated a groundbreaking for the NOC Stillwater Classroom Building to open for classes Fall 2018. The new classroom building will increase capacity 25% and bring into one location classes currently offered at Cowboy Mall and Fountain Square in Stillwater.
- Division Chair Dineo Heilmann and Mark Silkey stepped down from their chair roles. Dineo Heilmann will return in Fall 2017 as a full-time faculty member. Edward Dixon was selected to serve as the Fine Arts Division Chair beginning Fall 2017. Mark Silkey retired as chair and faculty member but will continue teaching as faculty emeritus beginning Fall 2017. Darrell Frost was selected to serve as the Social Science Division Chair beginning Fall 2017.
- Roustabouts performed at venues such as Kay County Fair, Billings Wheat Festival, Pawnee High School, and Poncan Theatre.
- Fine Arts events hosted in 2016-2017 included the following:
 - Sept. 8 - a Disney concert theme was presented by NOC music faculty, Edward Dixon, Shannon Bradford and Chad Anderson with students from the music department participating as well.
 - Sept. 15 - a classic Broadway concert featured the same faculty and students, singing traditional music of *South Pacific*, *Sound of Music* and other Broadway hits.
 - Sept. 22 - a Barbershop Quartet featured Edward Dixon, Chad Keilmann, Chris Schelp and Chad Anderson.
 - Sept. 29 - Jazz in the Park featured Edward Dixon with current NOC students and alumni.
 - Oct. 6-9 - Anthony Luetkenhaus opened his NOC directing debut production of "Unnecessary Farce."
 - Art exhibits at the Eleanor Hays Art Gallery included a Sept. 7 – Oct. 18 of monoprints, paintings and masks by Adrienne Day, Betty Bowen Hancock and Patrick Riley, and an Oct. 26 opening of *HOT.warm.cool.COLD: Art that maximizes the sensory properties of color*. Among the twenty-two artists that contributed to the show were three NOC art graduate alumni: Clayton Keyes, Andre Llanes and Benjie Morillo.
 - Nov. 17-20 - Chad Anderson directed the Music Theatre students in a very successful production of "Carrie, the Musical."
 - Jan. 27-29 – DMI hosted its 8th annual 48 Hour Film Festival.
 - Feb. 24 - Fine Arts Friday

Institutional Dictionary

To offer additions, corrections, or suggestions on definitions, please submit changes in writing to the Vice-President of Academic Affairs.

Administrative Council	The Administrative Council serves as an advisory group to the President. Composed of the Vice President for Academic Affairs, Vice President for Financial Affairs, Vice President for Development and Community Relations, Vice President for Student Affairs, Vice President for Enrollment Management, Vice President for Enid, Vice President for Stillwater, Associate Vice President for Physical Operations, Director of Information Technology, Dean of Academic Services, Dean of Students (Tonkawa), Dean of Students (Enid), Athletic Director, Director of Development and Donor Relations, Diversity Officer and Coordinator of International Students, the Council's primary function is to provide open discussion of institutional matters on which the President seeks advice and counsel. On most matters, a consensus rather than a formal action may be sought.
ACT	IPEDS definition: ACT, previously known as the American College Testing program, measures educational development and readiness to pursue college-level coursework in English, mathematics, natural science, and social studies. Student performance does not reflect innate ability and is influenced by a student's educational preparedness.
Academic Program	IPEDS definition: An instructional program leading toward an associate, bachelor, master, doctoral, or first-professional degree or resulting in credits that can be applied to one of these degrees.
Academic Year (AY)	The period from May of one calendar year to May of the following year during which students attend an educational institution. It includes a summer, fall, and spring term or semester.
Accrediting Agencies	IPEDS definition: Organizations (or bodies) that establish operating standards for educational or professional institutions and programs, determine the extent to which the standards are met, and publicly announce their findings.
Accreditation	A process whereby a professional association or nongovernmental agency grants recognition to an educational institution for demonstrated ability to meet predetermined criteria for established standards.
Alumni	A graduate or former student of a college.
Associate Degree	An award that normally requires at least 2 but fewer than 4 years of full-time equivalent college work.

Associate in Arts	A two-year degree preparing students for transfer to a four-year institution with a foundational education in liberal arts.
Associate in Science	A two-year degree preparing students for transfer to a four-year institution with a foundation in science, engineering and mathematics.
Associate in Applied Science	A two-year degree designed for students who intend on entering the workforce immediately following graduation.
Board of Regents	The Northern Oklahoma College Board of Regents has a cooperative relationship with the State Regents for Higher Education. The State Regents act as a coordinating board for members of the state system in such areas as program approval and fund allocations. The Northern Oklahoma College Board is empowered with statutory authority for governance of its own institution.
Catalog	The Catalog offers information about the academic programs and support services of the College. Website: http://northok.publishpath.com/catalog2
CIP Code	Classification of Instructional Program Code organized by the National Center for Education Statistics. A six-digit code in the form xx.xxxx that identifies instructional program specialties within educational institutions.
Cohort	A specific group of students established for tracking purposes.
Credit Hours	IPEDS definition: A unit of measure representing the equivalent of an hour (50 minutes) of instruction per week over the entire term. It is applied toward the total number of credit hours needed for completing the requirements of a degree, diploma, certificate, or other formal award.
Default Rates	The rate at which debt holders default on the amount of money that they owe.
Cohort Default Period	The phrase “cohort default period” refers to the three-year period that begins on October 1 of the fiscal year when the borrower enters repayment and ends on September 30 of the second fiscal year following the fiscal year in which the borrower entered repayment. Students who enter repayment in 2009 and default in 2009, 2010, or 2011 are reported in 2012.
Degree	IPEDS definition: An award conferred by a college, university, or other postsecondary education institution as official recognition for the successful completion of a program of studies.
Degree Award Date	The date at which a student finishes the coursework necessary to obtain a degree and the educational institution awards the degree.

Developmental Courses

Courses offered to aid students in obtaining the educational information needed to proceed into a college level course.

Distance Learning

The use of technology to offer course instruction to students not necessarily present with the instructor.

Traditional: A class is considered “traditional” when instruction relies solely upon face-to-face instruction with 800 minutes of seat time per credit hour issued.

Web-enhanced: A web-enhanced class is one in which a Learning Management System (e.g. Blackboard) is used for posting notes and/or homework assignments as a supplement to traditional class meetings.

Hybrid: A hybrid class represents a mixture of traditional and online elements with a minimum of 65% face-to-face instructional time and the use of a Learning Management System (e.g. Blackboard) as a supplement for either synchronous or asynchronous learning with the expectation of student interaction with other students and the teacher.

Online: An online class is one in which 75% or more of the instruction occurs through the use of a Learning Management System such as Blackboard.

ITV: Interactive television courses—delivery might be traditional, web-enhanced, or hybrid.

Employees

Full-time Staff

Persons employed for non-instructional duties for 40 hours a week.

Part-time Staff

Persons employed for non-instructional duties for fewer than 30 hours a week.

Full-time Faculty

Persons employed for instruction of students that teach 15 or more credit hours of course work a semester.

Adjunct

Persons employed for instruction of students that teach between 1-10 credit hours of course work a semester.

Enrollment

Full-time

Students enrolled in 12 or more credit hours for the semester.

Part-time

Students enrolled in 1-11 credit hours for the semester.

Sophomore

Students with 31-60 credit hours of course work completed.

Freshman

Students with 0-30 credit hours of course work completed.

Executive Council	The Executive Council serves as an advisory group to the President. Composed of the Vice President for Academic Affairs, Vice President for Financial Affairs, Vice President for Development and Community Relations, Vice President for Student Affairs, Vice President for Enrollment Management, Vice President for Enid, and Vice President for Stillwater, The Council's primary function is to provide open discussion of institutional matters on which the President seeks advice and counsel. On most matters, a consensus rather than a formal action may be sought.
Fall Cohort	IPEDS: The group of students entering in the fall term established for tracking purposes. For the Graduation Rates component, this includes all students who enter an institution as full-time, first-time degree or certificate-seeking undergraduate students during the fall term of a given year.
High School Diploma or Recognized Equivalent	IPEDS: A document certifying the successful completion of a prescribed secondary school program of studies, or the attainment of satisfactory scores on the GED or another state specified examination.
Financial Aid	IPEDS: Federal Work Study, grants, loans to students (government and/or private), assistantships, scholarships, fellowships, tuition waivers, tuition discounts, employer aid (tuition reimbursement) and other monies (other than from relatives/friends) provided to students to meet expenses. This excludes loans to parents. Website: www.studentaid.gov
Federal Grants	IPEDS: Transfers of money or property from the Federal government to the education institution without a requirement to receive anything in return. These grants may take the form of grants to the institutions to undertake research or they may be in the form of student financial aid. (Used for reporting on the Finance component)
Pell	(Higher Education Act of 1965, Title IV, Part A, Subpart I, as amended.) Provides grant assistance to eligible undergraduate postsecondary students with demonstrated financial need to help meet education expenses. Website: www.studentaid.gov
Pell Eligible	Students eligible for Pell assistance.
Loans	Any monies that must be repaid to the lending institution for which the student is the designated borrower. Includes all Title IV subsidized and unsubsidized loans and all institutionally- and privately-sponsored loans. Does not include PLUS and other loans made directly to parents. Website: www.studentaid.gov

Financial Year (FY)	A 12-month period over which a company budgets its spending. The fiscal year is referred to by the date at which it ends. Northern Oklahoma College begins its fiscal year on July 1 and concludes on June 30 in line with the State Regents' and the State of Oklahoma's fiscal year.
Foundation	An institutionally related 501 (c)(3) foundation created to enhance the educational opportunities and environment of the institution. The principal function of the Northern Oklahoma College Foundation is to promote Northern Oklahoma College and the welfare of its programs and students by providing scholarships, loans and other awards as deemed appropriate.
Foundation Grants	Financial support from any external agency which is handled through the Northern Oklahoma College Foundation.
Gender	The sex of the individual.
GPA	Grade point average of a student is a calculation based off of a student's credit hours taken and grades received for those credit hours.
Graduation Rate	IPEDS: The rate required for disclosure and/or reporting purposes under Student Right-to-Know Act. This rate is calculated as the total number of completers within 150% of normal time divided by the revised adjusted cohort.
Grants	Non-repayable funds or products (an award) disbursed to a grantee (recipient).
Headcount	The total number of individuals enrolled in the educational institution or program.
High School GPA	A student's weighted or unweighted GPA from his/her high school transcript.
High School Tank	A student's placement in high school compared to peers in the same grade based on GPA.
Higher Learning Commission	The Higher Learning Commission (HLC) is an independent corporation that was founded in 1895 as one of six regional institutional accreditors in the United States. HLC accredits degree-granting post-secondary educational institutions in the North Central region.
Institution of Higher Education	A term formerly used in IPEDS and HEGIS to define an institution that was accredited at the college level by an agency or association recognized by the Secretary, U.S. Department of Education. These schools offered at least a one-year program of study creditable toward a degree and they were eligible for participation in Title IV Federal financial aid programs.

IPEDs	The Integrated Postsecondary Education Data System. A system used by the U.S. Department's National Center for Educational Statistics (NCES) that annually gathers information from educational institutions of higher education and vocational institutions that participate in federal student financial aid programs.
Major	A field of study that a student chooses to receive a degree in.
Race/Ethnicity	IPEDS definition: Categories developed in 1997 by the Office of Management and Budget (OMB) that are used to describe groups to which individuals belong, identify with, or belong in the eyes of the community. The categories do not denote scientific definitions of anthropological origins. The designations are used to categorize U.S. citizens, resident aliens, and other eligible non-citizens.
American Indian or Alaska Native	IPEDS definition: A person having origins in any of the original peoples of North and South America (including Central America) who maintains cultural identification through tribal affiliation or community attachment.
Asian	IPEDS definition: A person having origins in any of the original peoples of the Far East, Southeast Asia, or the Indian Subcontinent, including, for example, Cambodia, China, India, Japan, Korea, Malaysia, Pakistan, the Philippine Islands, Thailand, and Vietnam.
Black or African American	IPEDS definition: A person having origins in any of the black racial groups of Africa.
Hispanic/Latino	A person of Cuban, Mexican, Puerto Rican, South or Central American, or other Spanish culture or origin, regardless of race.
Native Hawaiian or Other Pacific Islander	A person having origins in any of the original peoples of Hawaii, Guam, Samoa, or other Pacific Islands.
White	A person having origins in any of the original peoples of Europe, the Middle East, or North Africa.
Race and Ethnicity Unknown	The category used to report students or employees whose race and ethnicity are not known.
Non-resident/Alien	A person who is not a citizen or national of the United States and who is in this country on a visa or temporary basis and does not have the right to remain indefinitely.
Residence	Location at which a student is living.

Retention	IPEDS definition: A measure of the rate at which students persist in their educational program at an institution, expressed as a percentage. For four-year institutions, this is the percentage of first-time bachelor's (or equivalent) degree-seeking undergraduates from the previous fall who are again enrolled in the current fall. For all other institutions this is the percentage of first-time degree/certificate-seeking students from the previous fall who either re-enrolled or successfully completed their program by the current fall.
SIS	Student Information System - a data warehouse that contains all the data related to the institution.
State Grants	A financial award given by the state government to a grantee (recipient residing in the corresponding U.S. state).
Strategic Plan	A systematic process of envisioning a desired future and translating this vision into broadly defined goals or strategies and a sequence of steps to achieve them.
Student	
Concurrent	Student enrolled in high school and taking college coursework at the same time.
First-time Full-time student	Student enrolled in 15 or more credit hours of course work for the first time at any educational institution.
First-time Student	IPEDS: A student who has no prior postsecondary experience (except as noted below) attending any institution for the first time at the undergraduate level. This includes students enrolled in academic or occupational programs. It also includes students enrolled in the fall term who attended college for the first time in the prior summer term and students who entered with advanced standing (college credits earned before graduation from high school).
Full-time Student	Student enrolled in 12 or more credit hours a semester.
Part-time Student	Student enrolled in between 1-11 credit hours a semester.
Student Handbook	Handbook containing policies and procedures for students at Northern Oklahoma College. Website: http://northok.publishpath.com/student-handbook
Time to Degree	Time a student takes to finish a degree. For a two-year institution 100% of time to degree would be two years. For 150% time to degree, time to degree would be three years.

Title IV Aid	IPEDS: Title IV aid to students includes grant aid, work study aid, and loan aid. These include Federal Pell Grant, Federal Supplemental Educational Opportunity Grant (FSEOG), Academic Competitiveness Grant (ACG), National Science and Mathematics Access to Retain Talent Grant (National SMART Grant), Teacher Education Assistance for College and Higher Education (TEACH) Grant, Federal Work-Study, Federal Perkins Loan, Subsidized Direct or FFEL Stafford Loan, and Unsubsidized Direct or FFEL Stafford Loan.
Title IV Institution	IPEDS: An institution that has a written agreement with the Secretary of Education that allows the institution to participate in any of the Title IV federal student financial assistance programs (other than the State Student Incentive Grant [SSIG] and the National Early Intervention Scholarship and Partnership [NEISP] programs).
Transcript	An official record of student performance showing all schoolwork completed at a given school and the final mark or other evaluation received in each portion of the instruction. Transcripts often include an explanation of the marking scale used by the school.
Transfer of Credit	IPEDS: The policies and procedures used to determine the extent to which educational experiences or courses undertaken by a student while attending another institution may be counted for credit at the current institution.
Transfer-out Rate	Total number of students who are known to have transferred out of the reporting institution within 150% of normal time to completion divided by the adjusted cohort.
Tuition	The amount of money charged to students for instructional services. Tuition may be charged per term, per course, or per credit (NOC charges per credit hour).
In-state Tuition	The tuition charged by institutions to those students who meet the state's or institution's residency requirements.
Out-of-state Tuition	The tuition charged by institutions to those students who do not meet the institution's or state's residency requirements.
Two-year Institution	IPEDS: A postsecondary institution that offers programs of at least 2 but fewer than 4 years duration. Includes occupational and vocational schools with programs of at least 1800 hours and academic institutions with programs of fewer than 4 years. Does not include bachelor's degree-granting institutions where the baccalaureate program can be completed in 3 years.
Unduplicated Headcount	IPEDS: The sum of students enrolled for credit with each student counted only once during the reporting period, regardless of when the student enrolled.

Additional Resources

American Fact Finder – U.S. Census Bureau	http://factfinder2.census.gov
Aspen	http://www.aspeninstitute.org/policy-work/college-excellence
City of Stillwater	http://www.stillwater.org/
City of Tonkawa	http://cityoftonkawa.net/
Enid Regional Development Alliance	www.growenid.com
Federal Statistics	http://fedstats.sites.usa.gov/
Federal Student Aid – Default Management	http://ifap.ed.gov/DefaultManagement/finalcdrg.html
Higher Learning Commission	www.ncahlc.org
National Agricultural Statistics Service	www.nass.usda.gov
National Center for Educational Statistics	http://nces.ed.gov/ipeds/datacenter/
NOC Business Division Website	http://www.noc.edu/business-division1
NOC Nursing Division Website	http://northok.publishpath.com/nursing-division1
NOC Website	www.noc.edu
Oklahoma Department of Commerce	http://okcommerce.gov
Oklahoma Employment Security Commission	www.ok.gov
Oklahoma State Regents for Higher Education	www.okhighered.org
Ponca City Website	http://goponca.com
SmartAssets	https://smartasset.com/student-loans/the-top-ten-community-colleges-in-the-country
Southern Regional Education Board	www.sreb.org
University Center Ponca City	http://ucponcacity.com

